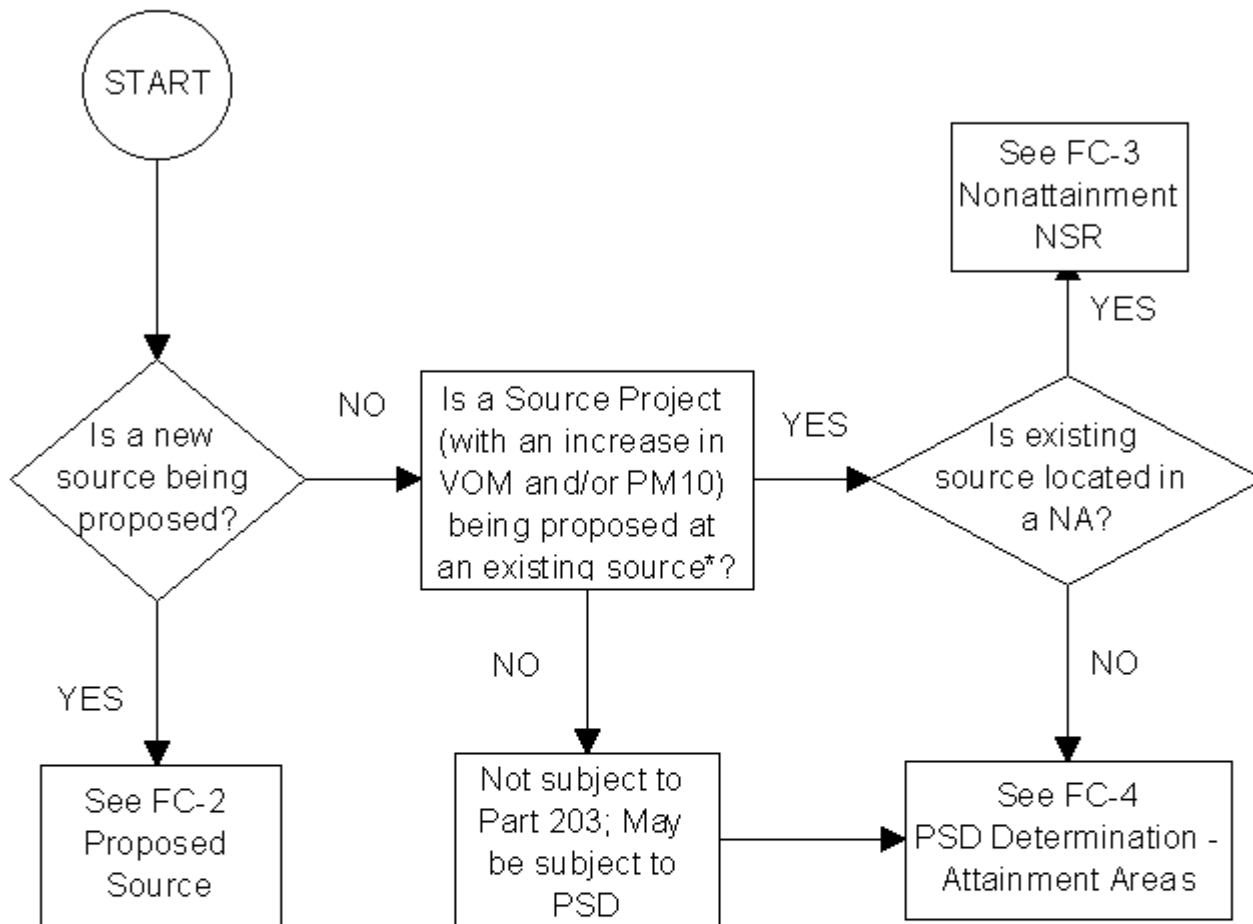


# FC-1

## Source Type/Applicability Determination



KEY:

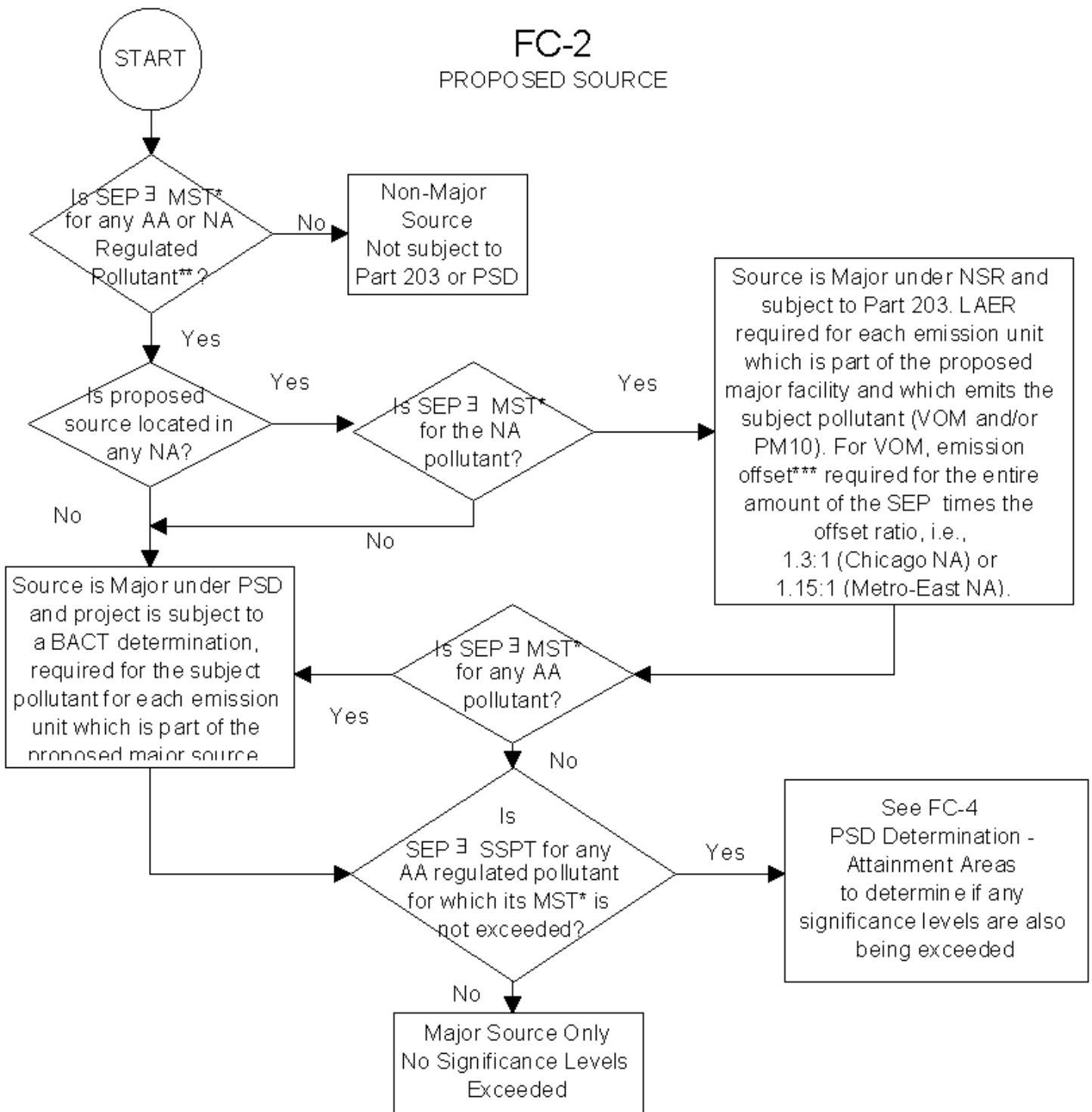
NA - Nonattainment

**\*IMPORTANT TO REMEMBER:**

A Source Project is:

- i. A new emission unit; or
- ii. A proposed physical change or change in the method of operation (other than an increase in operating hours or production rate, unrestricted by the permit) for an existing emission unit requiring issuance of a permit which will result in an increase in emissions; or
- iii. Multiples or combinations of the above which are related actions or part of a long-range plan

## FC-2 PROPOSED SOURCE



\* MST = Major Source Threshold; => for AA: 250 tpy for any contaminant, or 100 tpy if in listed 28  
for NA: 25 tpy of VOM in Chicago ozone NA

100 tpy of VOM in Metro-East ozone NA

100 tpy of PM10 in McCook, Lake Calumet, Granite City PM10 NA

\*\* Regulated Pollutants: VOM, NO<sub>x</sub>, PM/PM<sub>10</sub>, SO<sub>2</sub>, CO, Lead, or the other 20+ listed

\*\*\* For VOM - An emission offset may be obtained from another NA area of equal or higher classification if emissions from such other area contribute to a violation of the NAAQS in the NA area

KEY:

AA - Attainment Area

NA - Nonattainment Area

SEP - Source Emission Potential

MST - Major Source Threshold

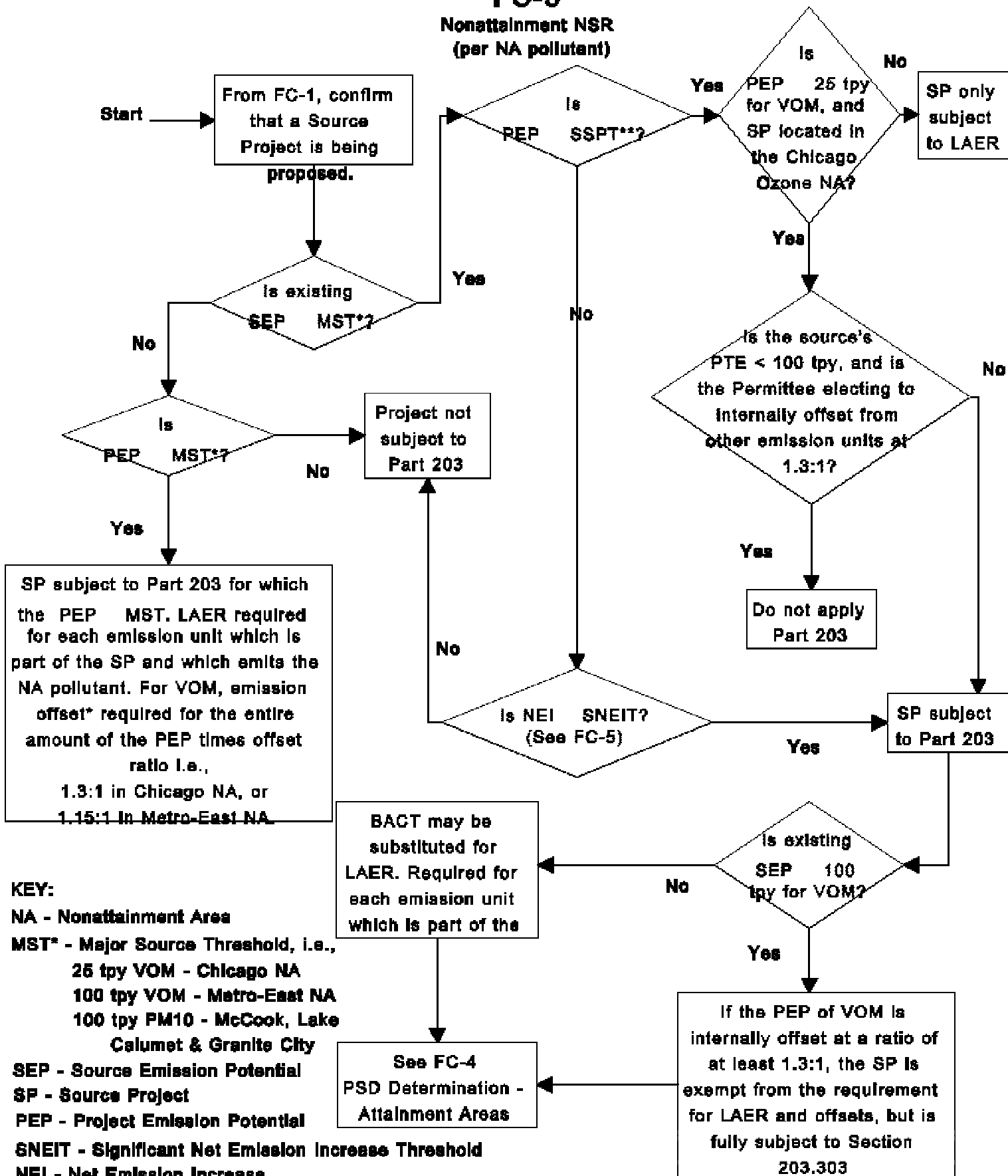
PEP - Project Emission Potential

SSPT - Significant Source Project Threshold

LAER - Lowest Achievable Emission Rate

# FC-3

## Nonattainment NSR (per NA pollutant)



**KEY:**

NA - Nonattainment Area

MST\* - Major Source Threshold, i.e.,

25 tpy VOM - Chicago NA

100 tpy VOM - Metro-East NA

100 tpy PM10 - McCook, Lake

Calumet & Granite City

SEP - Source Emission Potential

SP - Source Project

PEP - Project Emission Potential

SNEIT - Significant Net Emission Increase Threshold

NEI - Net Emission Increase

SSPT\*\* - Significant Source Project Threshold, i.e.,

25 tpy VOM - Chicago NA

100 tpy VOM - Metro-East NA

100 tpy PM10 - McCook, Lake Calumet, &

Granite City

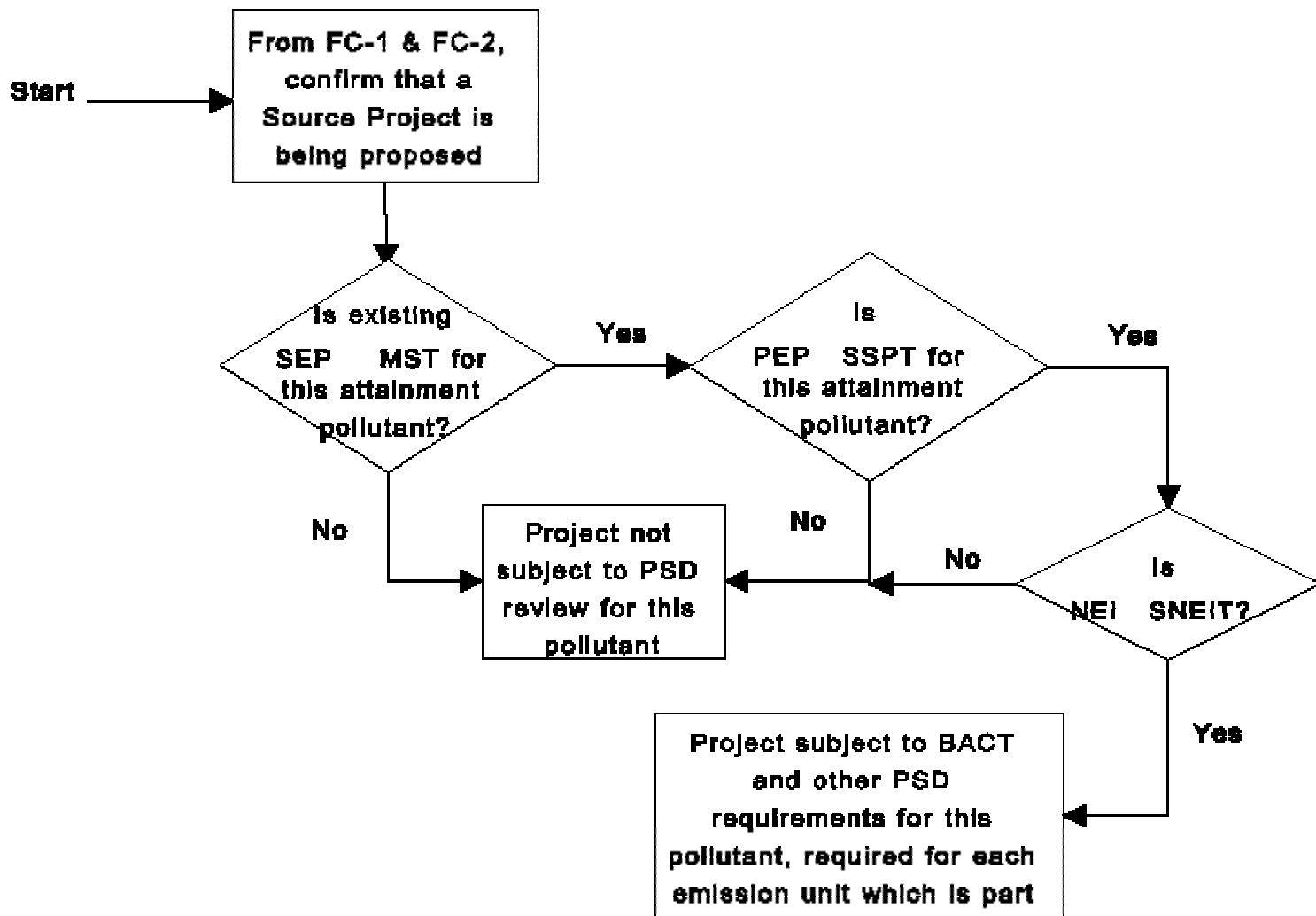
LAER - Lowest Achievable Emission Rate

PTE - Potential To Emit

**\*Note:** An offset may be obtained from another NA area of equal or higher classification if emissions from such other area contribute to a violation of the NAAQS for the NA contaminant in the NA area of the PSP. External offsets require offsets plus LAER.

# FC-4

## PSD Determination (Per Pollutant) - Attainment Areas



\* MST = Major Source Threshold; => for AA: 250 tpy for any contaminant, or 100 tpy if in listed 28  
for NA: 25 tpy for VOM

AA - Attainment Area

SSPT - Significant Source Project Threshold

PEP - Project Emission Potential

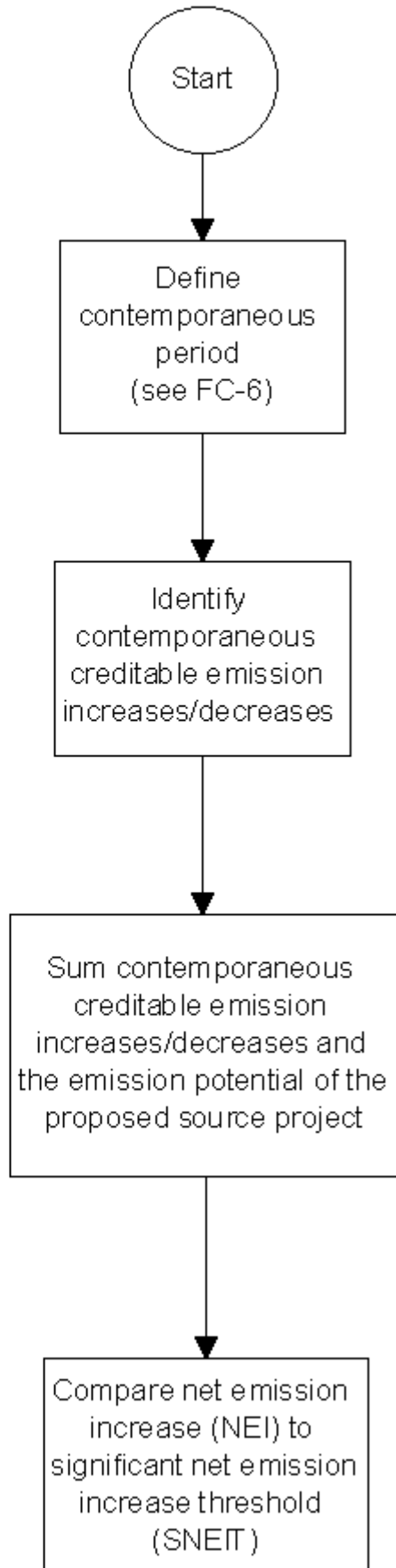
SEP - Source Emission Potential

NEI - Net Emission Increase

SNEIT - Significant Net Emission Increase Threshold

BACT - Best Available Control Technology

FC-5  
NET EMISSION INCREASE  
(Part 203)



# FC-6

## Contemporaneous Period Determination for Severe Ozone Nonattainment Area

