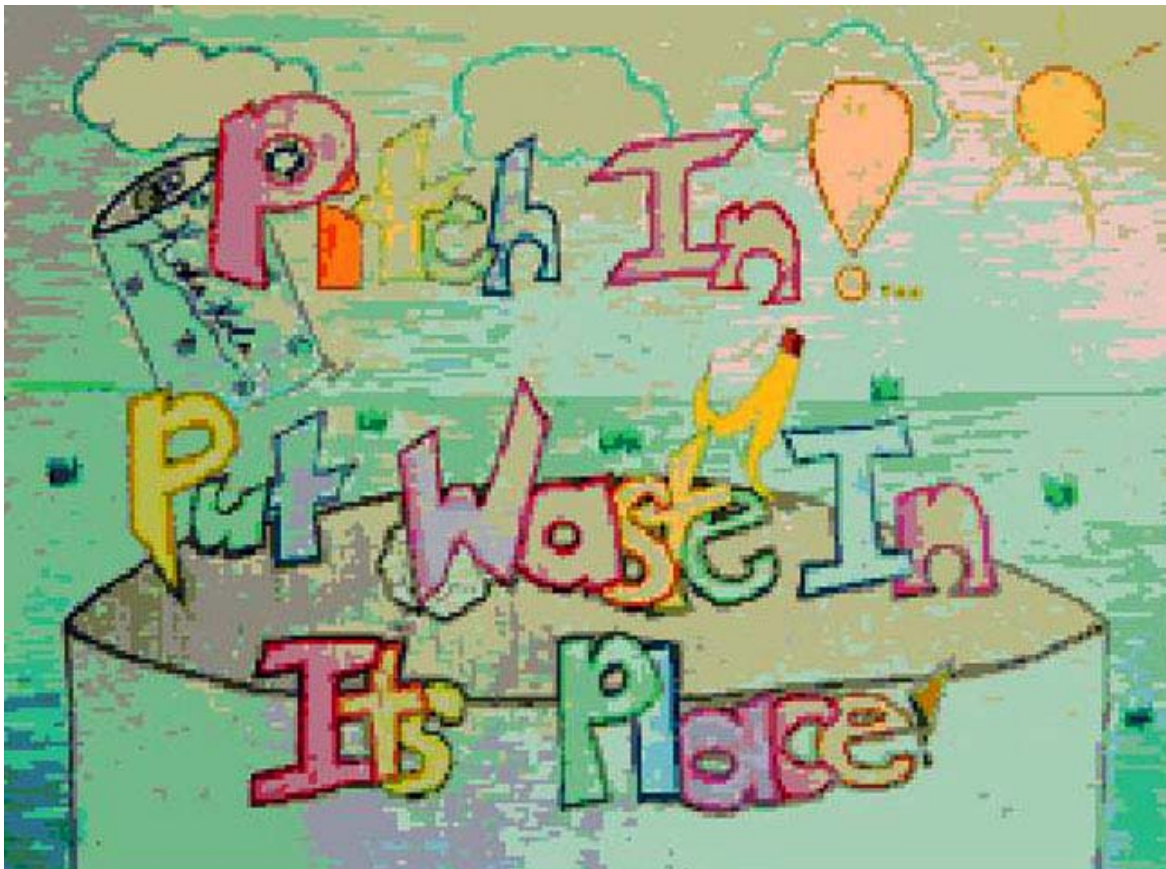


Landfills Transfer Stations Compost Facilities



"Pitch in! Put Waste in its Place" By Lauren Lee, student, Grower Middle School, Willowbrook (DuPage County). Winner of Illinois EPA's School Poetry, Prose and Poster Contest for 5th and 6th graders.

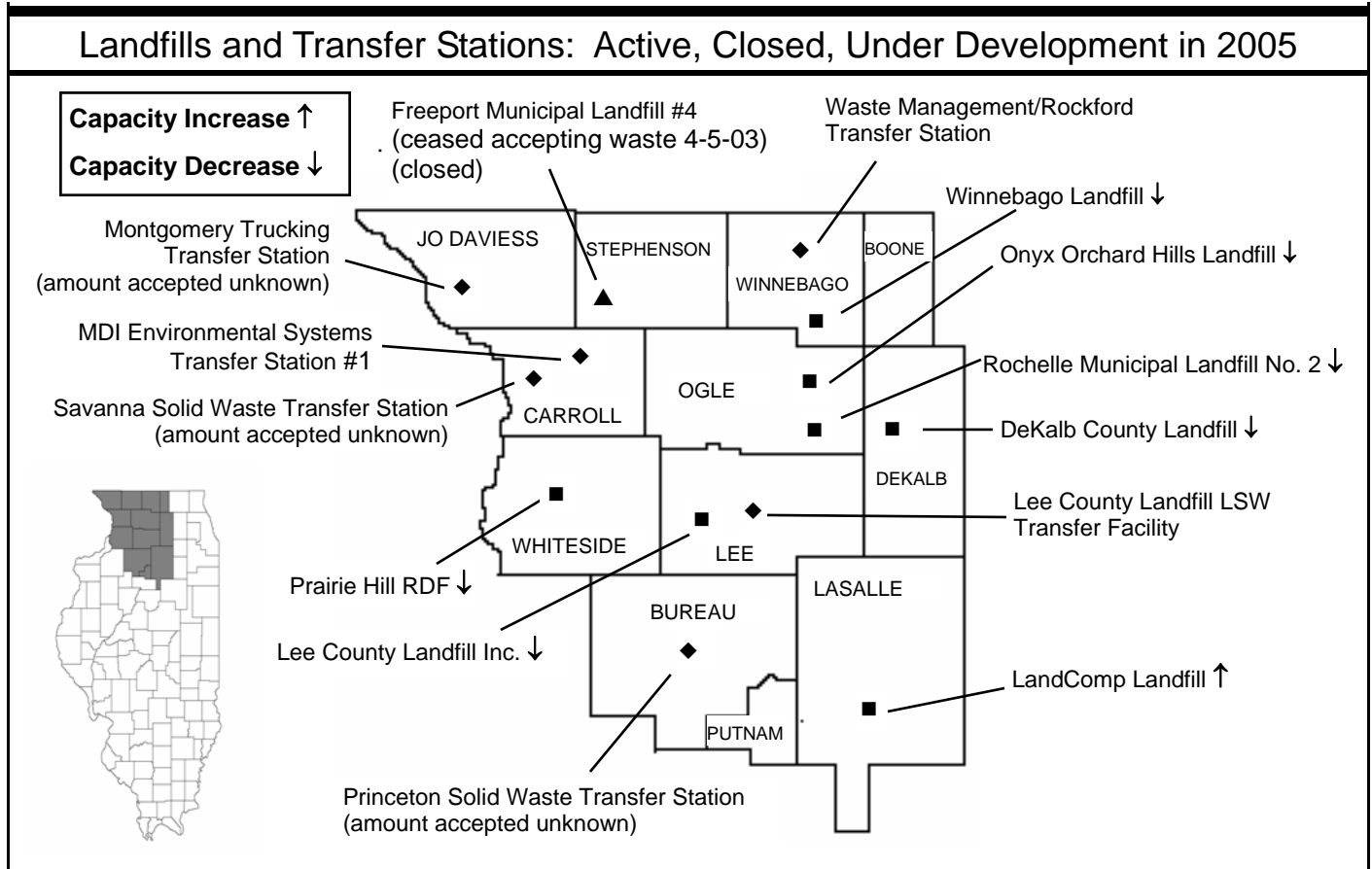
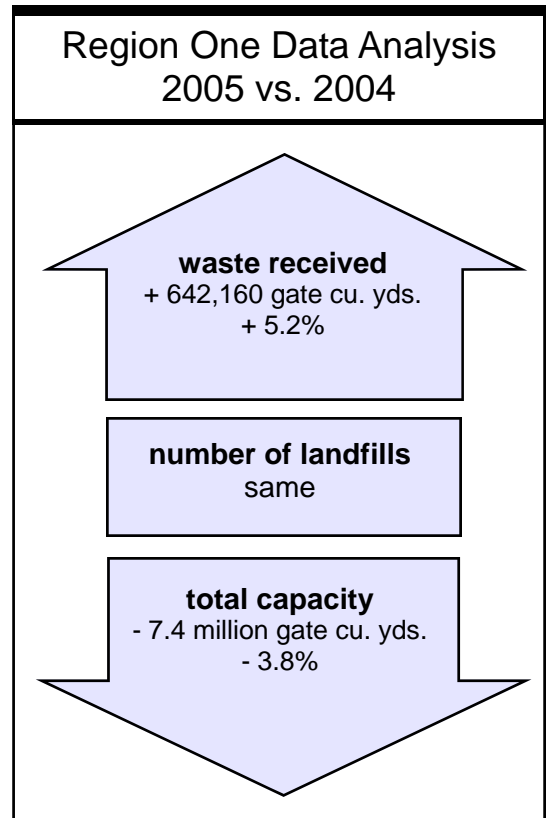
TWO LANDFILLS IN REGION ONE SHOW UP IN THE TOP THREE rankings of all the State's landfills in terms of waste receipts for 2005. Onyx Orchard Hills Landfill, Davis Junction, ranks second in the state by accepting almost 5.1 million gate cubic yards; Lee County Landfill, Dixon, is third with 4.0 million gate cubic yards received.

Because Cook County (County Seat: Chicago) has only two landfills left: CID RDF #3 and #4 and Congress Development Company, transfer stations in Chicago Metropolitan area have been consolidating wastes into semi trucks and transporting it to landfills in Northwestern and Central Illinois.

Region One's seven active facilities received 13 million gate cubic yards of waste in 2005 — or 642,160 gate cubic yards more than in 2004, a 5.2 percent increase.

Two landfills expand available capacity in 2004

Capacity available for waste disposal decreased 3.8 percent from 2004 to 2005, by a total of 7.4 million gate cubic yards based upon increased waste disposal in the region. Onyx Orchard Hills, Davis Junction, received approval for vertical and horizontal expansions on July 26, 2004. Winnebago Reclamation Service, Rockford, added capacity on April 27, 2004 when its permit application for vertical and horizontal expansions was approved.



Region One Solid Waste Statistics

Counties	12
Area (square miles)	7,371
Population (est.)	822,898
Landfill life expectancy	
Years remaining	14 *
Landfills	
Active in 2005	7
Transfer Stations	
Active in 2005	6
Compost facilities	
Active in 2005	5

*Total remaining capacity (from table below) divided by total waste accepted. Tells how long the region may be served by local landfills at current disposal rates, barring capacity adjustments, until capacity is depleted.

Capacity declined 3.8 percent as of Jan. 1, 2006

This region is second in the state, behind Peoria/Quad Cities, in remaining capacity, with a 19 percent capacity share. Onyx Orchard Hills Landfill reported almost 100.6 million gate cubic yards of space available as of Jan. 1, 2006, making it third in the state in capacity ranking on that date. Prairie Hill RDF, Morrison, with almost 44 million gate cubic yards ranks seventh in capacity remaining.

Total capacity for the Region's seven landfills, reporting on Jan. 1, 2006, was over 186.2 million gate cubic yards which means 14 years of remaining capacity for the region.

Expansions help boost the State's capacity

On July 26, 2004, Onyx Orchard Hills obtained approval for an additional 19.6 million cubic yards airspace with its 40.5 foot vertical expansion and its 76 acre horizontal expansion.

Winnebago Reclamation Services, Rockford, received a permit to expand vertically and horizontally on April 27, 2004. This expansion will add 1.8 million cubic yards of airspace for waste disposal at this landfill. Operation of south unit expansion Phase 1 was approved on Dec. 21, 2005.

Lee County Landfill, Dixon, also opened Cells 13 and 14 in September and October 2004. Vertical and horizontal expansions at this landfill were approved on June 18, 2006, but is not included in the latest capacity figure available.

Expansions

<u>Approved Later</u> ¹	<u>Airspace</u>
Lee County Landfill Inc.	29.4 million

¹ Approved on June 18, 2006, so it was not included in the Jan. 1, 2006 capacity figure

Landfills: Waste Accepted 2005; Remaining Capacities Jan. 1, 2006

	Municipality	County	Wastes		Capacity		Disp. Area Acres	Close Year
			Cu. Yds.	Rank ¹	Cu. Yds.	Rank ²		
DeKalb County Landfill	DeKalb	DeKalb	320,943	30	3,067,000	35	88	2015
LandComp Landfill	Ottawa	LaSalle	728,813	21	20,231,000	13	101.5	2033
Lee County Landfill Inc. ^{3*}	Dixon	Lee	4,044,660	3	10,688,000	21	266.9	2014
Onyx Orchard Hills Landfill ^{4*}	Davis Junction	Ogle	5,097,255	2	100,629,000	3	251.1	2025
Prairie Hill RDF*	Morrison	Whiteside	1,085,842	15	43,804,000	7	226.6	2036
Rochelle Municipal Landfill No. 2	Rochelle	Ogle	324,000	29	884,000	41	61	2009
Winnebago Landfill ⁵	Rockford	Winnebago	1,358,524	13	6,912,000	27	70.2	2011
Totals			12,960,037		186,215,000			

* Three landfills accepted out-of-state waste from Iowa and Wisconsin during 2005 totaling 94,854 gate cu. yds. or < 1% of the region's total.

¹ Standing among 51 landfills that accepted waste during 2005.

² Standing among 51 landfills that reported capacity as of Jan. 1, 2006.

³ Vertical and horizontal expansions approved on 6-18-06, not included in this capacity figure.

⁴ Expansions of 40.5 foot vertical and 76 ac. horizontal approved on 7-26-04.

⁵ Additional capacity of 1.8 million in-place cu. yds. permitted on 4-27-04. Operation of south unit expansion Phase 1 approved on 12-21-05.

Another expansion approved later than Jan. 1, 2006 in Lee County

Seven landfills in the Northwestern Illinois region remained open into 2005. Lee County Landfill, Dixon, received approval to expand its capacity by 29.4 million cubic yards in June 2006.

Delegated inspections in LaSalle and Ogle counties

The Illinois EPA delegated inspection authority to the LaSalle County Department of Environmental Services and Development and to the Ogle County Solid Waste Management Department. Delegation agreements authorize these agencies to conduct many of the duties that would otherwise have to be performed by the Illinois EPA field office in Rockford: investigating and enforcing suspected violations of land pollution laws and reports of open dumping, also inspecting landfills, transfer stations and compost facilities permitted through the Agency’s Bureau of Land. (Inspections also include nonhazardous industrial waste landfills, or monofills, and landfills that closed prior to 2003; these facilities are not included in this report.)

Waste Mgt./Rockford dominated regional transfer station activity

An Agency survey determined Region One’s transfer stations handled 125,316 gate tons of municipal waste in 2005, an amount equivalent to almost one percent of the waste landfilled in the region. Of those three voluntarily reporting, Waste Management/Rockford processed 60 percent of the regional total, and MDI Environmental Systems Transfer Station #1 accepted an additional 38 percent. Three others did not voluntarily report.

There were two inactive transfer stations in 2005. In the City of Mendota, Illinois, Waste Management temporarily closed its transfer station during the year. Rockford Landscape Waste Transfer Station was inactive during 2005.

The City of Freeport proposes to open a transfer station to replace its landfill that closed. More information about it will appear in the 2006 (20th) annual report. The City of Freeport received a permit to develop the site on December 8, 2004, but the site has not yet been permitted to operate.

Questions and Complaints

Illinois EPA Region One field office personnel investigate reports of suspected illegal waste disposal, and inspect the region’s landfills, transfer stations and compost facilities, except in **LaSalle and Ogle** counties, where some responsibility has been delegated to local authorities.

Questions or complaints concerning pollution control facilities, open dumping or other incidents should be directed to the office having jurisdiction over the site:

Illinois EPA, Bureau of Land
4302 N. Main St.
Rockford, IL 61103
Phone: 815-987-7760
Fax: 815-987-7005

LaSalle County Department of Environmental Services and Development
LaSalle County Courthouse
119 W. Madison, Room 400
Ottawa, IL 61350-5015
Phone: 815-434-8666
Fax: 815-433-9303

Ogle County Solid Waste Management Department
909 W. Pines Road
Oregon, IL 61061-9067
Phone: 815-732-4020
Fax: 815-732-3709

Transfer Stations: Waste Handled 2005

	Municipality	County	Tons
Waste Mgt./Rockford	Roscoe	Winnebago	75,400
MDI Env. Systems TS #1	Lanark	Carroll	48,087
Lee Co. LF LSW TF	Dixon	Lee	1,829
Montgomery Trucking ¹	Elizabeth	JoDavieess	0
Princeton Solid Waste ¹	Princeton	Bureau	0
Savanna Solid Waste ¹	Savanna	Carroll	0
Total			125,316

¹ Accepted an unknown amount of waste in 2005

Municipal Waste Management Plans

The Solid Waste Planning and Recycling Act requires all Illinois counties and the city of Chicago to develop, adopt and implement 20-year municipal waste management plans.

Plans include programs and recommendations to achieve solid waste management goals, which typically include waste reduction, recycling, incineration and landfilling as program options.

The law requires each plan to include a program designed to recycle 15 percent of municipal waste by the end of the third year of the program and 25 percent of municipal waste by the end of the fifth year (1996), depending upon the availability of markets.

Every five years, each plan must identify changes in planning areas, evaluate progress in plan implementation and, if necessary, revise plan recommendations and goals. The county also has the option of updating its solid waste generation rate. The plan is then submitted to the Illinois EPA for review and comment.

Five year plan updates have been adopted by all counties in Region One.

Ten year plan updates have also been adopted by DeKalb, LaSalle, Lee, Ogle, Putnam, Stephenson, Whiteside and Winnebago counties.

Questions concerning these plans and their availability should be directed to the appropriate local administrators listed in Appendix K of this report.

Details concerning Region One landfills, transfer stations and compost facilities follow on pages R1.5 through R1.23.

Rockford Composting/Cherry Valley leads in composting

Region One's five active compost facilities reported processing more than 37,179 gate tons of landscape waste in 2005. The two sites: Rockford Composting, Cherry Valley, (ranked sixth in the state) processed 62 percent of the region's total. Freeport Municipal Landfill #4 Compost Facility was certified closed on Jan. 9, 2004.

Compost Facilities: Waste Accepted 2005

	Municipality	County	Tons
Rockford Composting	Cherry Valley	Winnebago	23,104
DeKalb County Landfill ¹	DeKalb	DeKalb	9,961
Rockford Composting	Rockford	Winnebago	1,688
States Land Improve.	Ottawa	LaSalle	1,530
Peru Municipal Landfill #2	Peru	LaSalle	896
Total			37,179

¹ Permit renewed on 3-22-06

Average regional recycling rate remains healthy

The Agency does not regulate recycling, nor is the Agency required to obtain statistics. Nevertheless, as a public service, the Agency sought this information from county recycling coordinators, who reported recycling rates ranging from 3.0 to 54.6 percent.

Region One's overall recycling rate of 25 percent is a multi-year average. Seven counties did not report new data in 2005. Rankings were not made, as recycling goals are subject to markets for the recyclable materials. ♦

Municipal Waste Recycled

County	Estimated Population	Waste Generated		Waste Recycled	
		Tons	PCD	Tons	Percent
Boone	48,229	36,967	4.2	8,946	24.2
Bureau	35,503	22,030	3.4	2,678	12.2
Carroll ¹	16,941	10,231	3.3	2,194	21.4
DeKalb	93,089	127,379	7.5	69,599	54.6
JoDaviess ¹	21,678	12,697	3.2	1,425	11.2
LaSalle	110,000	175,880	8.8	49,205	28.0
Lee	36,063	32,906	5.0	8,374	25.4
Ogle	54,290	41,613	4.2	14,162	34.0
Putnam ¹	6,086	4,332	3.9	639	14.8
Stephenson ¹	48,979	49,163	5.5	2,190	4.5
Whiteside	60,186	42,763	3.9	1,303	3.0
Winnebago	291,854	339,820	6.4	63,600	18.7
Totals	822,898	895,781	6.0	224,315	25.0% ²

¹ Has residential recycling ordinance.

² Regional average

DeKalb County Landfill

County	DeKalb
Municipality	DeKalb
Location	18370 Somonauk Road
Location ☎	815-758-6906
Hours of operation	Mon.-Fri.: 6:30 a.m. - 5 p.m.; Sat.: 6:30 a.m. - noon
Waste accepted	Municipal, nonhazardous special*
Tipping fee	\$44.75 per ton
Owner	Waste Management of Illinois Inc.**
Operator	Waste Management of Illinois Inc.**

*Generated within county; does not accept out-of-county waste.

Facility Facts

Identification number	0378020001
Design capacity, cu.yds.	5,660,000
Total permitted landfill area, acres	245
Permitted disposal area, acres	88
Highest permitted elevation, feet (msl)	945
Leachate monitoring stations	5
Groundwater monitoring wells	27
Methane collection system	Yes
Years remaining, estimated by landfill	10
Date/year to open -- Date/year to close	1958 - 2015

Permit Mod. #50 dated 2-8-06 opened a 3.2 acre area named Phase 2B

Waste Received: 2003, 2004, 2005

	TOTAL WASTE ACCEPTED			OUT-OF-STATE WASTE ACCEPTED		
	gate cu. yds	tons	tons/day	gate cu/yds.	tons	% of total
2003	274,838	83,284	320	0	0	0
2004	320,041	96,982	373	0	0	0
2005	320,943	97,255	374	0	0	0
2003 State of Origin: Illinois only 2004 State of Origin: Illinois only 2005 State of Origin: Illinois only						

Remaining Capacities: Jan. 1, 2005 and Jan. 1, 2006

2005 certified gate cu. yds. (tons)	3,322,000	(1,007,000)
2006 certified gate cu. yds. (tons)	3,067,000	(929,000)

Audits and Inspections


Solid Waste Mgt. Fees paid in 2005	\$167,798
Facility inspected by	Illinois EPA, Rockford Regional Office

Contacts

Owner	Operator
Waste Management of Illinois Inc.** 18370 Somonauk Road DeKalb, IL 60115-8738 Contact: Mike Wiersema ☎ 815-758-6906	Waste Management of Illinois Inc.** 18370 Somonauk Road DeKalb, IL 60115-8738 Contact: Mike Wiersema ☎ 815-758-6906

**A subsidiary of Waste Management of IL & Waste Management Inc. Midwest, 1001 Fannin, Suite 4000, Houston, TX 77002, 713-512-6200. Regional Office: Waste Management of Illinois Inc., 1411 Opus Place, Suite 400, Downers Grove, IL 60515, 630-724-8400.

Freeport Municipal Landfill #4 (Closed)

County	Stephenson
Municipality	Freeport
Location	2133 S. Walnut Road
Location 	N/A
Hours of operation	N/A
Waste accepted	N/A*
Tipping fee	N/A
Owner	City of Freeport
Operator	City of Freeport

*Ceased accepting waste 4-5-03.

Facility Facts

Identification number	1770200015
Design capacity, cu.yds.	1,302,907
Total permitted landfill area, acres	33
Permitted disposal area, acres	17
Highest permitted elevation, feet (msl)	855
Leachate monitoring stations	2
Groundwater monitoring wells	9
Methane collection system	None
Years remaining, estimated by landfill	0
Date/year to open -- Date/year to close	1987 - 4-5-03

1995-281-LFM #9 approved 6-28-02 allowed 25,000 additional cu. yds. of trash to be landfilled. Extension to complete closure activities approved 4-3-06, Mod. #15.

Waste Received: 2003, 2004, 2005

	TOTAL WASTE ACCEPTED			OUT-OF-STATE WASTE ACCEPTED		
	gate cu. yds	tons	tons/day	gate cu/yds.	tons	% of total
2003	17,048	5,166	20	0	0	0
2004	0	0	0	0	0	0
2005	0	0	0	0	0	0
2003 State of Origin: Illinois only 2004 State of Origin: N/A 2005 State of Origin: N/A						

Remaining Capacities: Jan. 1, 2005 and Jan. 1, 2006


2005 certified gate cu. yds. (tons)	0	(0)
2006 certified gate cu. yds. (tons)	0	(0)

Audits and Inspections


Solid Waste Mgt. Fees paid in 2005	N/A
Facility inspected by	Illinois EPA, Rockford Regional Office

Contacts

Owner

City of Freeport
230 W. Stephenson St.
Freeport, IL 61032
Contact: Shelly R. Griswold
 815-235-8221

Operator

City of Freeport
230 W. Stephenson St.
Freeport, IL 61032
Contact: Shelly R. Griswold
 815-235-8221

LandComp Landfill

County	LaSalle
Municipality	Ottawa
Location	2840 E. 13th Road
Location ☎	815-434-1808
Hours of operation	Mon.-Fri.: 6 a.m. - 5 p.m.; Sat.: 6 a.m. - 11:30 a.m.
Waste accepted	Municipal, nonhazardous special
Tipping fee	\$33 per ton
Owner	LandComp Corp.**
Operator	LandComp Corp.

Facility Facts

Identification number	0990808103
Design capacity, cu.yds.	13,398,000
Total permitted landfill area, acres	188
Permitted disposal area, acres	101.5
Highest permitted elevation, feet (msl)	680
Leachate monitoring stations	13
Groundwater monitoring wells	38
Methane collection system	Gas-to-Energy (designed and operating)
Years remaining, estimated by landfill	28
Date/year to open -- Date/year to close	11-6-98 - 2033

Waste Received: 2003, 2004, 2005

	TOTAL WASTE ACCEPTED			OUT-OF-STATE WASTE ACCEPTED		
	gate cu. yds	tons	tons/day	gate cu/yds.	tons	% of total
2003	740,227	224,311	863	0	0	0
2004	780,344	236,468	909	0	0	0
2005	728,813	220,852	849	0	0	0
2003 State of Origin: Illinois only		2004 State of Origin: Illinois only		2005 State of Origin: Illinois only		

Remaining Capacities: Jan. 1, 2005 and Jan. 1, 2006

2005 certified gate cu. yds. (tons)	19,938,000	(6,042,000)
2006 certified gate cu. yds. (tons)	20,231,000	(6,131,000)

Audits and Inspections

Solid Waste Mgt. Fees paid in 2005	\$313,428
Facility inspected by	Illinois EPA, Rockford Regional Office & LaSalle Co. Dept. of Environmental Services & Development

Contacts

Owner

LandComp Corp.**
13701 S. Kostner Ave.
Crestwood, IL 60445
Contact: M. Khalid Umer
☎ 708-385-8252

Operator

LandComp Corp.
P.O. Box 520
Ottawa, IL 61350
Contact: Mark Dykema
☎ 815-434-1808

**A subsidiary of Allied Waste Industries Inc., 6969 E. Mayo Boulevard, Scottsdale, AZ 85260, 480-627-2700.

Lee County Landfill Inc.

County	Lee
Municipality	Dixon
Location	1214 S. Bataan Road
Location ☎	815-288-4607
Hours of operation	Mon.-Sat.: 6 a.m. - 6 p.m.
Waste accepted	Municipal, nonhazardous special
Tipping fee	\$36 per ton
Owner	Lee County Landfill Inc.**
Operator	Lee County Landfill Inc.**

Facility Facts

Identification number	1030205110
Design capacity, cu.yds.	47,900,000
Total permitted landfill area, acres	434.9
Permitted disposal area, acres	266.9
Highest permitted elevation, feet (msl)	947
Leachate monitoring stations	5
Groundwater monitoring wells	57
Methane collection system	Active System
Years remaining, estimated by landfill	19
Date/year to open -- Date/year to close	11-11-98 - 2014*

*Cell #11 & #12 opened on 10-29-03 and 11-21-03. Mod. #42 & #50 approves operation of part of the leachate recirculation system. Mod. #43 & #46 approves operation of a 7.584 acre Cell 13 on 9-21-04 and 6.748 acre Cell 14 on 10-28-04. Mod. #53 approves opening of 7.569 acre Cell 15 on 9-21-05. Mod. #57 approved a vertical expansion of 78 feet and horizontal expansion 29.4 million cu. yds (125 ac.) on 6-8-06, adding 16 to 19 years of landfill life.

Waste Received: 2003, 2004, 2005

	TOTAL WASTE ACCEPTED			OUT-OF-STATE WASTE ACCEPTED		
	gate cu. yds	tons	tons/day	gate cu/yds.	tons	% of total
2003	4,337,507	1,314,396	5,055	60,908	18,457	1
2004	4,025,263	1,219,777	4,691	15,813	4,792	< 1
2005	4,044,660	1,225,655	4,714	142	43	< 1
2003 State of Origin: Illinois, Iowa		2004 State of Origin: Illinois, Iowa		2005 State of Origin: Illinois, Iowa		

Remaining Capacities: Jan. 1, 2005 and Jan. 1, 2006

2005 certified gate cu. yds. (tons)	13,744,000	(4,165,000)
2006 certified gate cu. yds. (tons)	10,688,000	(3,239,000)

Audits and Inspections

Solid Waste Mgt. Fees paid in 2005	\$2,115,293
Facility inspected by	Illinois EPA, Rockford Regional Office

Contacts

Owner	Operator
Lee County Landfill Inc.** 13701 S. Kostner Ave. Crestwood, IL 60445 Contact: M. Khalid Umer ☎ 708-385-8252	Lee County Landfill Inc.** 1214 S. Bataan Road Dixon, IL 61021 Contact: David Geier ☎ 815-288-4607

**A subsidiary of Allied Waste Industries Inc., 6969 E. Mayo Boulevard, Scottsdale, AZ 85260, 480-627-2700.

Onyx Orchard Hills Landfill

County	Ogle
Municipality	Davis Junction
Location	8290 Highway 251
Location ☎	815-874-9000
Hours of operation	Mon.-Fri.: 4:30 a.m. - 7 p.m.; Sat.: 4:30 a.m. - 1 p.m.
Waste accepted	Municipal, nonhazardous special
Tipping fee	\$47.50 per ton
Owner	Onyx Orchard Hills Landfill Inc.**
Operator	Onyx Orchard Hills Landfill Inc.**

Facility Facts

Identification number	1410175005
Design capacity, cu.yds.	45,369,400
Total permitted landfill area, acres	446.32
Permitted disposal area, acres	251.1*
Highest permitted elevation, feet (msl)	922
Leachate monitoring stations	9
Groundwater monitoring wells	25
Methane collection system	Active
Years remaining, estimated by landfill	20
Date/year to open -- Date/year to close	1-13-98 - 2025

*Mod. #26 approved on 7-26-04 an additional 19,628,655 cu. yds. air space (vertical of 40.5 ft. and horizontal expansion of 76 acres). Phase IV, Module 1 (18 acres) opened 1-31-03. On 9-21-04 & 4-8-05 parts of the leachate recirculation system were approved. Phase V, Module 1 (13 acres) opened 4-8-05. Mod. #32 approves construction for gas collection and leachate recirculation system on 7-12-05. Mod. #36 approved Phase V, Module 2 (9.3 acres) on 12-16-05.

Waste Received: 2003, 2004, 2005

	TOTAL WASTE ACCEPTED			OUT-OF-STATE WASTE ACCEPTED		
	gate cu. yds	tons	tons/day	gate cu/yds.	tons	% of total
2003	4,928,362	1,493,443	5,744	3,294	998	< 1
2004	4,721,672	1,430,810	5,503	277	84	< 1
2005	5,097,255	1,544,623	5,941	55	17	< 1

2003 State of Origin: Illinois, Wisconsin (Tons per day and year reported differently by operator) 2004 State of Origin: Illinois, Wisconsin 2005 State of Origin: Illinois, Wisconsin

Remaining Capacities: Jan. 1, 2005 and Jan. 1, 2006

2005 certified gate cu. yds. (tons)	102,387,000	(31,026,000)
2006 certified gate cu. yds. (tons)	100,629,000	(30,494,000)

Audits and Inspections

Solid Waste Mgt. Fees paid in 2005	\$2,090,210
Facility inspected by	Illinois EPA, Rockford Regional Office & Ogle County Solid Waste Management Department

Contacts

Owner	Operator
Onyx Orchard Hills Landfill Inc.** 8290 Highway 251 South Davis Junction, IL 61020 Contact: Chris Peters ☎ 815-874-9000	Onyx Orchard Hills Landfill Inc.** 8290 Highway 251 South Davis Junction, IL 61020 Contact: Chris Peters ☎ 815-874-9000

**An affiliate of Onyx Waste Services, 125 S. 84th St., Suite 200, Milwaukee, WI 53214, 414-479-7800 and a subsidiary of Onyx North America, 1605 Main St., Ste. 904, Sarasota, FL 34236, 941-953-9111 and Veolia Environnement, France.

Prairie Hill Recycling and Disposal Facility

County	Whiteside
Municipality	Morrison
Location	18762 Lincoln Road
Location ☎	815-772-7308
Hours of operation	Mon.-Fri.: 6 a.m. - 4 p.m.; Sat.: 6 a.m. - noon
Waste accepted	Municipal, declassified special streams
Tipping fee	\$19 per ton
Owner	Whiteside County
Operator	Waste Management of Illinois Inc.**

Facility Facts

Identification number	1950350014
Design capacity, cu.yds.	28,300,000
Total permitted landfill area, acres	423
Permitted disposal area, acres	226.6
Highest permitted elevation, feet (msl)	877
Leachate monitoring stations	12
Groundwater monitoring wells	41
Methane collection system	None
Years remaining, estimated by landfill	30*
Date/year to open -- Date/year to close	8-26-96 - 2036

*On 1-13-05 Mod. #34 approved leachate recirculation procedures. Mod. #38 approved Phase 5, Cell 1 South (8.5 ac.) on 12-28-05

Waste Received: 2003, 2004, 2005

	TOTAL WASTE ACCEPTED			OUT-OF-STATE WASTE ACCEPTED		
	gate cu. yds	tons	tons/day	gate cu/yds.	tons	% of total
2003	900,600	272,909	1,050	54,380	16,479	6
2004	1,100,359	333,442	1,282	72,854	22,077	7
2005	1,085,842	329,043	1,266	94,657	28,684	9
2003 State of Origin: Illinois, Iowa		2004 State of Origin: Illinois, Iowa		2005 State of Origin: Illinois, Iowa		

Remaining Capacities: Jan. 1, 2005 and Jan. 1, 2006

2005 certified gate cu. yds. (tons)	44,930,000	(13,615,000)
2006 certified gate cu. yds. (tons)	43,804,000	(13,274,000)

Audits and Inspections

Solid Waste Mgt. Fees paid in 2005	\$555,097
Facility inspected by	Illinois EPA, Rockford Regional Office

Contacts

Owner	Operator
Whiteside County	Waste Management of Illinois Inc.**
Whiteside County Courthouse, 200 E. Knox St.	18762 Lincoln Road
Morrison, IL 61270	Morrison, IL 61270
Contact: Peter Petrowsky	Contact: Ian Johnson
☎ 815-772-7651	☎ 630-232-7664

**A subsidiary of Waste Management of IL & Waste Management Inc. Midwest, 1001 Fannin, Suite 4000, Houston, TX 77002, 713-512-6200. Regional Office: Waste Management of Illinois Inc., 1411 Opus Place, Suite 400, Downers Grove, IL 60515, 630-724-8400.

Rochelle Municipal Landfill No. 2

County	Ogle
Municipality	Rochelle
Location	6513 Mulford Road
Location ☎	815-384-4251
Hours of operation	Mon.-Sat.: 6 a.m. - 6 p.m.
Waste accepted	Municipal, nonhazardous special
Tipping fee	\$45 per ton
Owner	City of Rochelle
Operator	Rochelle Waste Disposal LLC

Facility Facts

Identification number	1418030020
Design capacity, cu.yds.	1,827,900
Total permitted landfill area, acres	80.6
Permitted disposal area, acres	61
Highest permitted elevation, feet (msl)	876
Leachate monitoring stations	6
Groundwater monitoring wells	14
Methane collection system	Flares
Years remaining, estimated by landfill	3
Date/year to open -- Date/year to close	6-30-72 - 2009

Permit renewed 2-28-03.

Waste Received: 2003, 2004, 2005

	TOTAL WASTE ACCEPTED			OUT-OF-STATE WASTE ACCEPTED		
	gate cu. yds	tons	tons/day	gate cu/yds.	tons	% of total
2003	327,000	99,091	381	0	0	0
2004	348,000	105,455	406	0	0	0
2005	324,000	98,182	378	0	0	0
2003 State of Origin: Illinois only 2004 State of Origin: Illinois only 2005 State of Origin: Illinois only						

Remaining Capacities: Jan. 1, 2005 and Jan. 1, 2006

2005 certified gate cu. yds. (tons)	1,013,000	(307,000)
2006 certified gate cu. yds. (tons)	884,000	(268,000)

Audits and Inspections

Solid Waste Mgt. Fees paid in 2005	\$52,630
Facility inspected by	Illinois EPA, Rockford Regional Office & Ogle County Solid Waste Management Department

Contacts

Owner

City of Rochelle
420 N. 6th St. (6th St. & 5th Ave.)
Rochelle, IL 61068
Contact: Dennis Sims
☎ 815-561-2000

Operator

Rochelle Waste Disposal LLC
1161 Hwy. 251 South, P.O. Box 268
Rochelle, IL 61068
Contact: Clyde Gelderloos
☎ 815-562-4134

Winnebago Landfill

County	Winnebago
Municipality	Rockford
Location	8403 Lindenwood Road
Location ☎	815-874-4806
Hours of operation	Mon.-Fri.: 5 a.m. - 7 p.m.; Sat.: 7 a.m. - 5 p.m.
Waste accepted	Municipal, nonhazardous special
Tipping fee	\$60 per ton
Owner	Winnebago Reclamation Service Inc.
Operator	Winnebago Reclamation Service Inc.

Facility Facts

Identification number	2018080001
Design capacity, cu.yds.	21,012,300*
Total permitted landfill area, acres	235
Permitted disposal area, acres	42.7 (northern); 27.5 (southern) = 70.2
Highest permitted elevation, feet (msl)	865 (northern); 846 (southern)
Leachate monitoring stations	6
Groundwater monitoring wells	45
Methane collection system	Gas-to-Energy (operating)
Years remaining, estimated by landfill	5.1
Date/year to open -- Date/year to close	4-30-72 - 2011

*Additional capacity of 1,798,840 in-place cu. yds. permitted on 4-27-04, adding five more years of site life (2012). Name changed on 9-28-05 from Winnebago Reclamation Service. Mod. #30 approved operation of its south unit expansion Phase 1 (7.2 acres) on 12-21-05.

Waste Received: 2003, 2004, 2005

	TOTAL WASTE ACCEPTED			OUT-OF-STATE WASTE ACCEPTED		
	gate cu. yds	tons	tons/day	gate cu/yds.	tons	% of total
2003	1,106,058	335,169	1,289	0	0	0
2004	1,022,198	309,757	1,191	0	0	0
2005	1,358,524	411,674	1,583	0	0	0
2003 State of Origin: Illinois only		2004 State of Origin: Illinois only		2005 State of Origin: Illinois only		

Remaining Capacities: Jan. 1, 2005 and Jan. 1, 2006

2005 certified gate cu. yds. (tons)	8,279,000	(2,509,000)
2006 certified gate cu. yds. (tons)	6,912,000	(2,095,000)

Audits and Inspections

Solid Waste Mgt. Fees paid in 2005	\$516,552
Facility inspected by	Illinois EPA, Rockford Regional Office

Contacts

Owner

Winnebago Reclamation Service Inc.
4920 Forest Hills Road
Loves Park, IL 61111
Contact: Tom Hilbert
☎ 815-381-5646

Operator

Winnebago Reclamation Service Inc.
4920 Forest Hills Road
Loves Park, IL 61111
Contact: Tom Hilbert
☎ 815-381-5646

Lee Co. Landfill LSW Transfer Facility (Active)

County	Lee
Municipality	Dixon
Location	1214 S. Bataan Road
Location ☎	815-288-4607
Hours of operation	Mon.-Sat.: 24 hours per day
Waste accepted	Landscape waste only
Tipping fee	\$40/ton
Owner	Lee County Landfill Inc.**
Operator	Lee County Landfill Inc.**

Facility Facts

Identification number	1030205110
Opened, year	2002
Facility acreage	N/A

Waste Received: 2003, 2004, 2005

	<u>Tons per year</u>	<u>Tons per day (average)</u>
2003	1,073	4
2004	1,753	6
2005	1,829	7

Inspections

Facility inspected by	Illinois EPA, Rockford Regional Office
-----------------------	--

Contacts

Owner	Operator
Lee County Landfill Inc.**	Lee County Landfill Inc.**
Allied Waste Industries Inc.	David Geier
13832 S. Kostner Ave.	1214 S. Bataan Road
Crestwood, IL 60445	Dixon, IL 61021
☎ 708-824-3060	☎ 815-288-4607

**A subsidiary of Allied Waste Industries Inc., 6969 E. Mayo Boulevard, Scottsdale, AZ 85260, 480-627-2700.

MDI Environmental Systems Transfer Station #1 (Active)

County	Carroll
Municipality	Lanark
Location	30687 Rte. 52 & 64
Location ☎	815-938-3602
Hours of operation	Mon.-Fri.: 6 a.m. - 6 p.m.; Sat.: 6 a.m. - 4 p.m.
Waste accepted	Municipal, recyclables
Tipping fee	\$55/ton
Owner	Moring Disposal Inc.
Operator	MDI Environmental Systems

Facility Facts

Identification number	0150100001
Opened, year	1994
Facility acreage	5

Waste Received: 2003, 2004, 2005

	<u>Tons per year</u>	<u>Tons per day (average)</u>
2003	49,000	190
2004	45,367	176
2005	48,087	185

Inspections

Facility inspected by	Illinois EPA, Rockford Regional Office
-----------------------	--

Contacts

Owner

Moring Disposal Inc.
Larry Moring
306 E. Main, P.O. Box 158
Forreston, IL 61030
☎ 815-938-3602

Operator

MDI Environmental Systems
Dennis R. Pate
306 E. Main, P.O. Box 158
Forreston, IL 61030
☎ 815-493-6331

Montgomery Trucking (Active)

County	JoDaviess
Municipality	Elizabeth
Location	Route 20 West
Location ☎	815-777-0672
Hours of operation	Mon.-Fri.: 8 a.m. - 3 p.m.; Sat.: 8 a.m.-11 a.m.
Waste accepted	Municipal, recyclables
Tipping fee	N/A
Owner	Montgomery Trucking
Operator	Montgomery Trucking

Facility Facts

Identification number	0850155009
Opened, year	1997
Facility acreage	1.32

Waste Received: 2003, 2004, 2005

	<u>Tons per year</u>	<u>Tons per day (average)</u>
2003	0	0
2004	0	0
2005	0	0

Tons per year and average tons per day are unknown.

Inspections

Facility inspected by	Illinois EPA, Rockford Regional Office
------------------------------	--

Contacts

Owner

Montgomery Trucking
Gordy Montgomery
929 Fulton St., P.O. Box 6081
Galena, IL 61036
☎ 815-777-0672

Operator

Montgomery Trucking
Gordy Montgomery
929 Fulton St., P.O. Box 6081
Galena, IL 61036
☎ 815-777-0672

Princeton Solid Waste Transfer Station (Active)

County	Bureau
Municipality	Princeton
Location	101 Peggy Lane
Location ☎	815-875-1682
Hours of operation	Mon.-Sat.: 5 a.m. - 5 p.m.
Waste accepted	Municipal, recyclables
Tipping fee	N/A
Owner	City of Princeton
Operator	Dean's Transfer Services Inc.**

Facility Facts

Identification number	0110850012
Opened, year	1993
Facility acreage	5

Waste Received: 2003, 2004, 2005

	<u>Tons per year</u>	<u>Tons per day (average)</u>
2003	19,781	72
2004	30,879	113
2005	0	0

Tons per year and average tons per day are unknown.

Inspections

Facility inspected by	Illinois EPA, Rockford Regional Office
------------------------------	--

Contacts

Owner	Operator
City of Princeton Steve Wright 2 S. Main St. Princeton, IL 61356 ☎ 815-875-2631	Dean's Transfer Services Inc. Steve Schmitt 1922 Park Ave. West Princeton, IL 61356 ☎ 815-875-2293

**New operator for 2004.

Savanna Solid Waste Transfer Station (Active)

County	Carroll
Municipality	Savanna
Location	Chamber of Commerce Industrial Park, Portland Avenue
Location ☎	815-273-2251
Hours of operation	Tue.-Wed.: 8 a.m. - 2 p.m.; Sat.: 8 a.m. - noon
Waste accepted	Municipal, landscape waste, recyclables
Tipping fee	N/A
Owner	City of Savanna
Operator	City of Savanna

Facility Facts

Identification number	0150250005
Opened, year	1990
Facility acreage	1

Waste Received: 2003, 2004, 2005

	<u>Tons per year</u>	<u>Tons per day (average)</u>
2003	0	0
2004	0	0
2005	0	0

Tons per year and average tons per day are unknown.

Inspections

Facility inspected by	Illinois EPA, Rockford Regional Office
------------------------------	--

Contacts

Owner	Operator
City of Savanna Timothy Schoenig 101 Main St. Savanna, IL 61074 ☎ 815-273-2251	City of Savanna Timothy Schoenig 101 Main St. Savanna, IL 61074 ☎ 815-273-2251

Waste Management/Rockford Transfer Station (Active)

County	Winnebago
Municipality	Roscoe
Location	13125 N. Second St.
Location ☎	815-389-6180
Hours of operation	Mon.-Sat.: 4 a.m. - 10 p.m.
Waste accepted	Municipal, landscape waste
Tipping fee	N/A
Owner	Waste Management of Wisconsin Inc.**
Operator	Waste Management of Rockford**

Facility Facts

Identification number	2010400008
Opened, year	1984
Facility acreage	N/A

Waste Received: 2003, 2004, 2005

	<u>Tons per year</u>	<u>Tons per day (average)</u>
2003	76,362	294
2004	78,520	302
2005	75,400	290

Inspections

Facility inspected by	Illinois EPA, Rockford Regional Office
-----------------------	--

Contacts

Owner	Operator
Waste Management of Wisconsin Inc.** Richard L. Ancelet West 124 North, 8925 Boundary Road Menomonee Falls, WI 53051 ☎ 262-251-4000	Waste Management of Rockford** Gregory Kaminski 13125 N. 2nd St., P.O. Box 359 Roscoe, IL 61073 ☎ 815-389-6180

**A subsidiary of Waste Management Inc. Midwest, 1001 Fannin, Suite 4000, Houston, TX 77002, 713-512-6200.

DeKalb County Landfill Compost Facility (Active)

County	DeKalb
Municipality	DeKalb
Location	18370 Somonauk Road
Location ☎	815-758-6906
Hours of operation	Mon.-Fri.: 7 a.m. - 3:30 pm.
Waste Accepted	Grass, leaves, brush, vegetable waste*
Owner	Waste Management of Illinois Inc.**
Operator	Waste Management of Illinois Inc.**

*Maximum amounts accepted 80,000 cu. yds. per year.

Facility Facts

Identification number	0378020001
Date/Year Open - Date/Year Closed	2-8-90 -
Permit Expires	1-15-11*
Facility Inspected By	Illinois EPA, Rockford Regional Office

*Permit renewed 3-22-06

Landscape Waste Received (cu. yds): 2003, 2004 & 2005

	Grass cu. yds.	Leaves cu. yds.	Brush cu. yds.
2003	0	0	0
2004	0	0	0
2005	0	0	0

*Records did not itemize landscape waste components.

Total Landscape Waste Received (tons): 2003, 2004 & 2005

2003 tons per year	18,410
2004 tons per year	10,598
2005 tons per year	9,961

2005 Amounts Used/Sold (cubic yards)

	Composted	Chipped/Shredded
Land Reclamation	0	0
Daily Landfill Cover	0	0
Final Landfill Cover	0	0
Landscaping	0	0
Land Application at Agronomic Rates	0	0
Other	11,732	0
TOTAL	11,732	0

Other means used by off-site customers

Contacts

Owner	Operator
Waste Management of Illinois Inc.** Mike Wiersema 18370 Somonauk Road DeKalb, IL 60115-8738 ☎ 815-758-6906	Waste Management of Illinois Inc.** Mike Wiersema 18370 Somonauk Road DeKalb, IL 60115-8738 ☎ 815-758-6906

**A subsidiary of Waste Management Inc. Midwest, 1001 Fannin, Suite 4000, Houston, TX 77002, 713-512-6200. Regional Office: Waste Management of Illinois Inc., 1411 Opus Place, Suite 400, Downers Grove, IL 60515, 630-724-8400.

Peru Municipal Landfill #2 Compost Facility (Active)

County	LaSalle
Municipality	Peru
Location	Route 251 & Ben Samek Road
Location ☎	N/A
Hours of operation	Mon.-Fri.: 7 a.m. - 4 p.m.
Waste Accepted	Grass, leaves, brush
Owner	City of Peru
Operator	City of Peru

Facility Facts

Identification number	0990850002
Date/Year Open - Date/Year Closed	6-1-90 -
Permit Expires	4-1-08*
Facility Inspected By	Illinois EPA, Rockford Regional Office & LaSalle County Department of Environmental Services & Development

*Permit renewed for additional five years on 5-12-03.

Landscape Waste Received (cu. yds): 2003, 2004 & 2005

	Grass cu. yds.	Leaves cu. yds.	Brush cu. yds.
2003	2,015	1,880	388
2004	1,549	1,952	416
2005	1,092	1,654	512

*512 cubic yards of wood chips converted at 500 lbs. per cu. yd.

Total Landscape Waste Received (tons): 2003, 2004 & 2005

2003 tons per year	1,279
2004 tons per year	1,114
2005 tons per year	896

2005 Amounts Used/Sold (cubic yards)

	Composted	Chipped/Shredded
Land Reclamation	0	0
Daily Landfill Cover	0	0
Final Landfill Cover	100	0
Landscaping	600	175
Land Application at Agronomic Rates	0	0
Other	0	0
TOTAL	700	175

Contacts

Owner

City of Peru
Stephen L. Kowalczyk
1727 4th Street
Peru, IL 61354
☎ 815-223-2962

Operator

City of Peru
Stephen L. Kowalczyk
1727 4th Street
Peru, IL 61354
☎ 815-223-2962

Rockford Composting Facility/Cherry Valley (Active)

County	Winnebago
Municipality	Cherry Valley
Location	6200 Baxter Road
Location ☎	815-381-5641
Hours of operation	Mon.-Sat.: 8 a.m. - 3 p.m.
Waste Accepted	Grass, leaves, brush
Owner	City of Rockford
Operator	Rock River Disposal Services Inc.

Facility Facts

Identification number	2010301128
Date/Year Open - Date/Year Closed	10-26-89 -
Permit Expires	7-1-09*
Facility Inspected By	Illinois EPA, Rockford Regional Office

*Permit renewed on 7-27-04 for another five years.

Landscape Waste Received (cu. yds): 2003, 2004 & 2005

	Grass cu. yds.	Leaves cu. yds.	Brush cu. yds.
2003	33,540	34,470	15,467
2004	39,442	37,235	14,340
2005	31,868	36,580	20,273

Total Landscape Waste Received (tons): 2003, 2004 & 2005

2003 tons per year	22,630
2004 tons per year	25,375
2005 tons per year	23,104

2005 Amounts Used/Sold (cubic yards)

	Composted	Chipped/Shredded
Land Reclamation	0	0
Daily Landfill Cover	0	0
Final Landfill Cover	0	0
Landscaping	0	0
Land Application at Agronomic Rates	0	0
Other	0	0
TOTAL	0	0

Amount used/sold for landscaping purposes was given in tons, not cu. yds. (2,140 tons)

Contacts

Owner

City of Rockford
John Gessner
425 E. State St.
Rockford, IL 61104-1014
☎ 815-967-5637

Operator

Rock River Disposal Services Inc.
Tom Hilbert
5450 Wansford Way, Ste. 201B
Rockford, IL 61109
☎ 815-381-5646

Rockford Composting/Rockford (Active)

County	Winnebago
Municipality	Rockford
Location	1800 S. Meridian Road
Location ☎	563-322-1783
Hours of operation	Mon.-Fri.: 6 a.m. - 5 p.m.; Sat.: 6 a.m. - 2 p.m.
Waste Accepted	Grass, leaves, brush
Owner	Woodcycle Inc. IL dba Rockford Composting Inc.
Operator	Rockford Composting Inc.

*New owner and operator in 2003; new name in 2003.

Facility Facts

Identification number	2010300109
Date/Year Open - Date/Year Closed	10-28-92 -
Permit Expires	1-1-08*
Facility Inspected By	Illinois EPA, Rockford Regional Office

*Permit renewed on Jan. 23, 2003 for five more years.

Landscape Waste Received (cu. yds): 2003, 2004 & 2005

	Grass cu. yds.	Leaves cu. yds.	Brush cu. yds.
2003	2,683	4,975	4,402
2004	2,435	4,514	3,995
2005	1,404	2,603	2,303

Total Landscape Waste Received (tons): 2003, 2004 & 2005

2003 tons per year	3,226
2004 tons per year	2,928
2005 tons per year	1,688

2005 Amounts Used/Sold (cubic yards)

	Composted	Chipped/Shredded
Land Reclamation	0	0
Daily Landfill Cover	0	0
Final Landfill Cover	0	0
Landscaping	6,310	0
Land Application at Agronomic Rates	0	0
Other	0	0
TOTAL	6,310	0

Contacts

Owner

Woodcycle Inc. IL dba Rockford Composting Inc.
Robert Markam
111 E. 3rd St., Ste. 515, Union Arcade Bldg.
Davenport, IA 52801
☎ 563-322-1783

Operator

Rockford Composting Inc.
Hank Neblock
1800 S. Meridian Road
Rockford, IL 61102
☎ 815-703-1165

States Land Improvement LSW Processing and Composting Facility (Active)

County	LaSalle
Municipality	Ottawa
Location	North of Koenig Road
Location ☎	815-434-1808
Hours of operation	Mon.-Fri.: 7 a.m. - 4 p.m.
Waste Accepted	Grass, leaves, brush
Owner	States Land Improvement Corp.
Operator	States Land Improvement Corp.**

*Maximum amounts accepted 10,000 cu. yds. per year.

Facility Facts

Identification number	0990800040
Date/Year Open - Date/Year Closed	6-8-90 -
Permit Expires	1-1-09*
Facility Inspected By	Illinois EPA, Rockford Regional Office & LaSalle County Department of Environmental Services & Development

*Permit renewed on 1-23-04 for five more years.

Landscape Waste Received (cu. yds): 2003, 2004 & 2005

	Grass cu. yds.	Leaves cu. yds.	Brush cu. yds.
2003	2,685	2,140	523
2004	2,477	2,396	400
2005	2,477	2,396	400

Total Landscape Waste Received (tons): 2003, 2004 & 2005

2003 tons per year	1,580
2004 tons per year	1,530
2005 tons per year	1,530

2005 Amounts Used/Sold (cubic yards)

	Composted	Chipped/Shredded
Land Reclamation	0	0
Daily Landfill Cover	950	200
Final Landfill Cover	1,420	0
Landscaping	0	0
Land Application at Agronomic Rates	0	0
Other	0	0
TOTAL	2,370	200

Contacts

Owner	Operator
States Land Improvement Corp. Paul DeGroot P.O. Box 520 Ottawa, IL 61350 ☎ 815-434-1808	States Land Improvement Corp.** Mark Dykema P.O. Box 520 Ottawa, IL 61350 ☎ 815-434-1808
**A subsidiary of Allied Waste Industries Inc., 6969 E. Mayo Boulevard, Scottsdale, AZ 85260, 480-627-2700. Regional Office: 13832 S. Kostner, Crestwood, IL 60445, 708-824-3060.	