

**State of Illinois**  
Rod R. Blagojevich

**Illinois Environmental Protection Agency**  
Bureau of Water



# 2005 Annual Compliance Report

## Annual Compliance Report, Calendar Year 2005 The Drinking Water Program: An Overview

### Introduction



The United States Environmental Protection Agency (USEPA) established the Public Water System Supervision (PWSS) Program under the authority of the 1974 Safe Drinking Water Act (SDWA). Under the SDWA and the subsequent amendments, USEPA sets national limits on contaminant levels in drinking water to ensure that the water is safe for human consumption. These limits are known as Maximum Contaminant Levels (MCLs)<sup>2</sup> and Maximum Residual Disinfectant Levels (MRDL's)<sup>3</sup>. For some regulations, EPA establishes treatment techniques (TT)<sup>4</sup> in lieu of an MCL to control unacceptable levels of contaminants in water. The Agency also regulates how

often public water systems (PWSs)<sup>1</sup> monitor their water for contaminants and report the monitoring results to the states or USEPA. Generally, the larger the population served by a water system, the larger the number of samples collected and the more frequent the monitoring and reporting (M/R)<sup>5</sup> requirements. In addition, USEPA requires Public Water Systems (PWSs) to monitor for unregulated contaminants to provide data for development of future regulations. Finally, USEPA requires PWSs to notify their consumers when they have violated these regulations. The 1996 Amendments to the SDWA require consumer notification to include a clear and understandable explanation of the nature of the violation, its potential adverse health effects, steps that the PWS is undertaking to correct the violation and the possibility of using alternative water supplies during the violation.

### Annual State PWS Report

The purpose of this annual compliance report is to satisfy the requirement of Section 1414(c)(3) of the 1996 Amendments to the Safe Drinking Water Act (SDWA). States with national primary

---

enforcement authority are to prepare, make readily available to the public, and submit to the Administrator of the USEPA by July 1 of each year, an annual report on violations occurring during the previous calendar year of national primary drinking water regulations by public water systems.

## Annual Compliance Report Background

Each quarter, the Illinois Environmental Protection Agency (Illinois EPA) submits data to the Federal Safe Drinking Water Information System (SDWIS/FED), an automated database maintained by USEPA. The data submitted include, but are not limited to, PWS inventory information, the incidences of violations of Maximum Contaminant Levels, Maximum Residual Disinfectant Levels, monitoring, and treatment technique violations; and information on enforcement activity related to these violations. This report provides the numbers of violations in each of six categories:



- Maximum Contaminant Level (MCL) violations
- Maximum Residual Disinfectant Level (MRDL) violations,
- Treatment Technique (TT) requirement violations,
- Significant violations of Monitoring and Reporting (M/R) requirement violations,
- Significant violations of the Consumer Notification requirements,
- And Violations of Variances and Exemptions.

Attached to this report as Appendix A is a listing for each contaminant regulated by the SDWA, the numbers of maximum contaminant level (MCL), maximum residual disinfectant level (MRDL), treatment technique (TT) and major monitoring and reporting (M/R) violations for each compliance period during calendar year 2005, the number of violations that were returned to compliance (RTC), and the number of systems incurring violations. Appendix B and Appendix C contain a detailed listing of public water systems with MCL, MRDL, or TT violations.

## Variances and Exemptions

A PWS can be granted a “variance” from a primary drinking water regulation if the characteristics of the raw water sources reasonably available to the PWS do not allow the system to meet the MCL. To obtain a variance, the system must agree to install the best available technology, treatment techniques, or other means of limiting drinking water contamination that the Administrator finds are available (taking costs into account), and the state must find that the variance will not result in an unreasonable risk to public

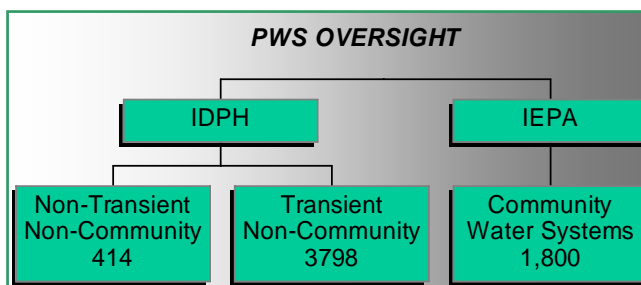


health. The variance shall be reviewed not less than every 5 years to determine if the system remains eligible for the variance. During 2005, Illinois did not grant any variances.

A water system may also petition the state for an “exemption”. An exemption is permission not to meet an MCL or a treatment technique under certain conditions for a period of time. An exemption may be granted to give a water system additional time to make complicated and expensive modifications and improvements to the water treatment process so that compliance may be achieved in the shortest period of time. During 2005, Illinois did not grant any exemptions.

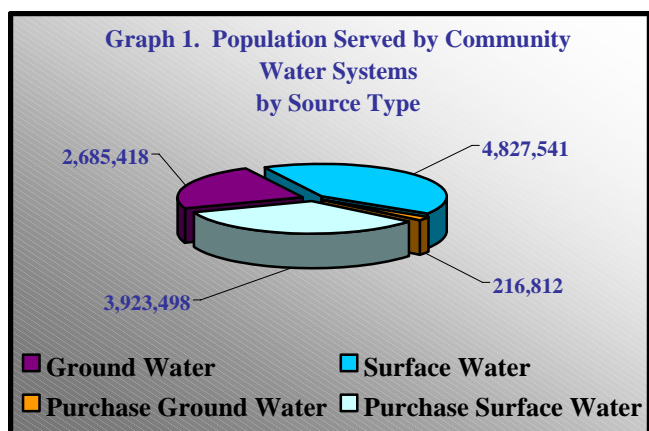
## Public Water System Overview

In Illinois, oversight of PWSs is divided between the Illinois Environmental Protection Agency (Illinois EPA) and the Illinois Department of Public Health (Illinois DPH). Illinois EPA has been designated as the lead agency for primary enforcement authority and oversees the **community public water system (CWS)** program (those supplies



that serve 15 or more year around service connections or 25 or more year around residents). Illinois DPH oversees the **non-community water systems**. Non-community systems include the **non-transient, non-community public water systems (NTNC)** that serve 25 or more of the same non-residents at least 180 days out of the year and include facilities such as day care centers, schools and factories. Illinois DPH also oversees the **transient non-community (TNC) public water systems** that serve 25 or more different nonresidents at least 60 days out of the year and include facilities such as campgrounds and highway rest areas. The remainder of this report will detail the CWS supplies and then, separately, address the non-community (NTNC/TNC) supplies.

## Community Public Water Supplies



As previously mentioned, the Illinois EPA oversees the **CWS** program. A CWS is a PWS that serves 25 or more people year around and/or has 15 service connections. ◀ **Graph 1** depicts the breakdown of the 1,800 community water systems within Illinois with regard to their source of water. A total of 11,653,269 persons are served by those systems; 41 percent of that population is directly served from surface water systems. Thirty-four percent of the population is served by purchased surface water, 2 percent by purchased ground water, and 23 percent by ground water systems. It

is worth noting that although only 23 percent of the population is served by ground water; ground water systems comprise almost 59 percent (1,057 of the 1,800) of the total number of

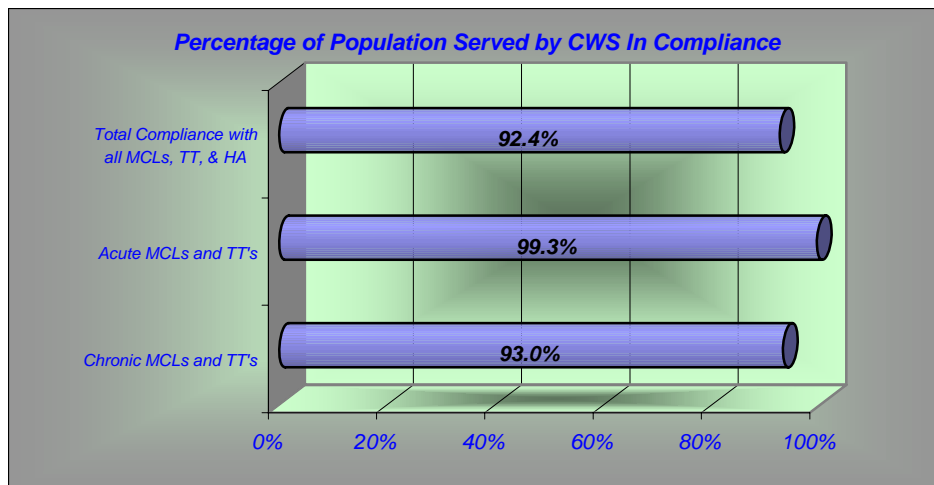
community water systems. The type of source water (ground, surface, or purchase) for a CWS will determine monitoring, treatment, and operational requirements. For example, surface water systems are required to monitor turbidity, where ground water systems (that are not under the influence of surface water) are not. This requirement will impact compliance numbers as outlined later in this report.

## CWS - Environmental Indicators

The Illinois EPA Safe Drinking Water Goal is for every Illinois public water system to provide water that is consistently safe to drink. As a part of its partnership agreement with USEPA, Illinois EPA measures the progress of the drinking water program with environmental indicators consisting of the percentage of persons served by community water systems that have not incurred violations of any acute MCL, chronic MCL, acute treatment technique, chronic treatment technique or public education requirement during the year. The environmental objective of the Illinois EPA is to increase the percentage of population served by CWS that receive drinking water with no short-term (acute) or long-term (chronic) adverse health effects to over 95 percent by the year 2008. The progress towards this objective is summarized below.

## CWS - Environmental Indicator Progress

Safe drinking water should be free of contaminants that have the potential to cause either short term or long-term health effects. During calendar year 2005, the percentage of persons served by Illinois CWS that have been in effect for more than three years and that were compliant with all health requirements (MCL), treatment techniques (TT), or public education was **92.4** percent. Compliance efforts will continue to focus on minimizing the frequency and duration of excursions and the development of enforceable schedules for the implementation of corrective action plans to achieve sustained compliance.



◀ Graph 2

**CWS  
Compliance  
Percentages**

During calendar year 2005, the percentage of persons served by Illinois CWS that were compliant with all health requirements was 92.4 percent. This compliance percentage represents over a three-percentage improvement from calendar year 1995 and reflects continued progress toward the goal of 95 percent. It is important that safe drinking water be free of contamination that has the potential to cause either short-term or long-term health effects.

## CWS - Acute vs. Chronic Indicators

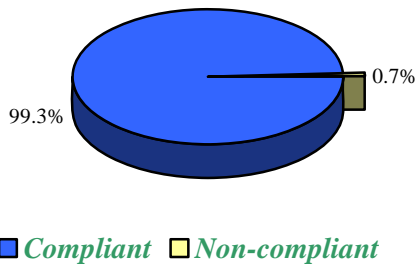
The contaminants fall into two groups according to the health effects that they cause:

ACUTE	CHRONIC
<p>Acute effects occur within hours or days of the time that a person consumes a contaminant. People can suffer acute health effects from almost any contaminant if they are exposed to extraordinarily high levels (as in the case of a spill). In drinking water, microbes, such as bacteria and viruses, are the contaminants with the greatest chance of reaching levels high enough to cause acute health effects. Most people's bodies can fight off these microbial contaminants the way they fight off germs; and these acute contaminants typically don't have permanent effects. Nonetheless, when high enough levels occur, they can make people ill, and can be dangerous or deadly for a person whose immune system is already weak due to HIV/AIDS, chemotherapy, steroid use, or another reason.</p>	<p>Chronic effects occur after people consume a contaminant at levels over EPA's safety standards for many years. USEPA develops the standards for chronic MCLs on the basis that a person may have an adverse health effect after consuming two liters of water daily over a 70-year lifetime. The drinking water contaminants that can have chronic effects are chemicals (such as disinfection by-products, solvents, and pesticides), radionuclides (such as radium), and minerals (such as arsenic). Examples of the chronic effects of drinking water contaminants are cancer, liver or kidney problems, or reproductive difficulties.</p>

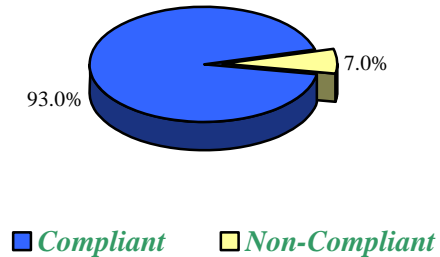
**Graph 3 (below)** shows that **99.3** percent of the population served by Illinois CWS received drinking water in compliance with acute (short-term) health requirements, and **93.0** percent were in compliance with chronic (long-term) health requirements. It is important to note that most non-compliance was short in duration, and the potential for health risk was minimized through prompt corrective action by the water supplies. Supplies with microbial problems (bacterial or turbidity non-compliance) are required to issue boil orders when the violation occurs. Community water systems with acute MCLs were limited to five water systems.

**Acute and Chronic Requirements (2005 data)**  
**Percent of CWS Population Served Compliant with Health Records**

ACUTE



CHRONIC



## CWS - Lead And Copper Compliance

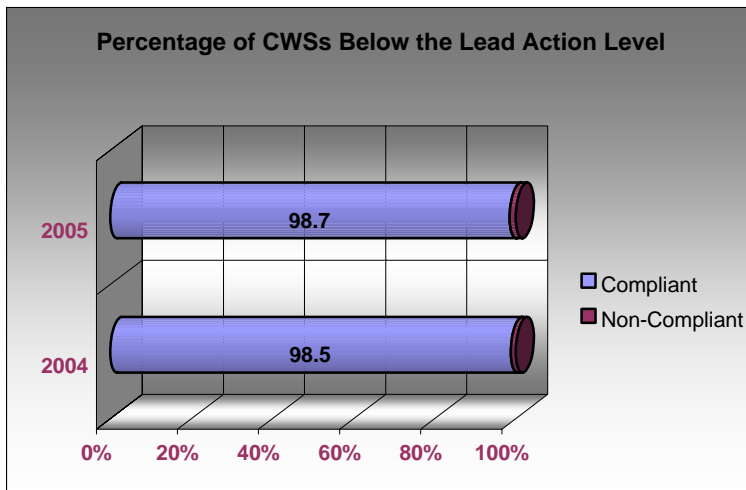
In 2005, 1,778 water supplies, or approximately **98.7** percent of community water supplies were below the lead action level. These water supplies serve **99.0** percent of the population. There were no treatment technique violations reported for the NTNC water systems overseen by the Illinois DPH.

### Lead and Copper Rule Compliance



Lead and copper are regulated by a Treatment Technique that requires systems to control the corrosiveness of their water. The lead action level (15 parts per billion of lead) when exceeded in more than ten percent of the water samples collected in consumers' homes, requires the water supply to implement optimal corrosion control treatment plans or procedures which would prevent anticipated adverse health effects and ensure that lead or copper is controlled in the drinking water.

▼ **Graph 4** illustrates the Percentage of **Community** Water Systems that were below the lead action level.



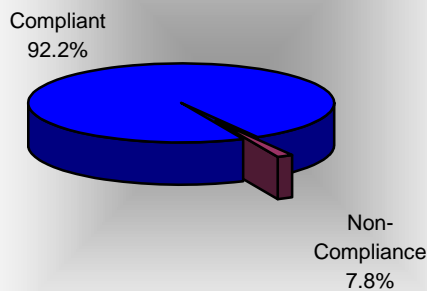
During the years 2004 to 2005, a 0.2 percent net decrease in lead action level exceedances was seen in CWS. Generally, non-compliance is for a short period of time due to the fact the treatment is adjusted to the required ranges. Roughly *99 percent* of the population served by CWS consumed water that was compliant with lead action level during 2005.

## CWS - Consumer Awareness

Every community water supplier must provide an annual report (sometimes called a Consumer Confidence Report or CCR) to its customers. The report provides information on local drinking water quality, including the water's source, the contaminants found in the water, and how consumers can get involved in protecting drinking water. If the consumers have been looking for specific information about their drinking water, this annual report will provide them with the information they need.

In connection with each violation described in the previous sections, public notification is required to be issued. Public notification provides a means to protect public health, build trust with consumers through open and honest sharing of information, and establishes an ongoing, positive relationship with the community. Public notice can also be used to help consumers

### *Community Systems in Compliance with Consumer Notification*



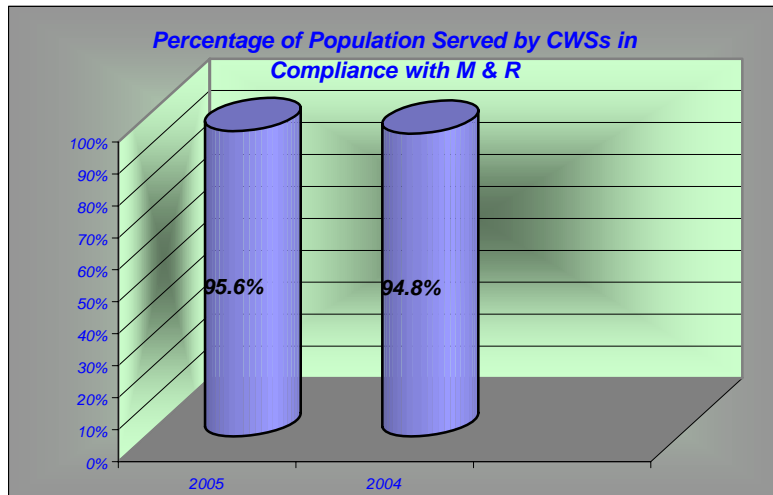
understand rate increases and support increased funding for drinking water treatment and protection. Properly done, the notices can work for the benefit of the public water supplier as well the public. In the event a problem occurs, educated consumers are more likely to understand the problem and support the actions a water utility must take. Many deadlines for public notice issuance depend upon prompt contact and discussion between the public water system and Illinois EPA. Efficient communication with prompt reporting is the cornerstone for compliance. **Graph 5 (left)** depicts the compliance rates for community water systems with regard to overall consumer notification. This includes failure to issue public notice and the CCR compliance rate.

## CWS – Monitoring and Reporting (M&R)

The USEPA has established contaminant-specific minimum testing schedules for public water systems. Water systems typically monitor for bacteria, protozoa and viruses, nitrate and nitrite, volatile organic compounds (e.g., benzene), synthetic organic compounds (e.g., pesticides), inorganics (e.g., arsenic), lead and copper, and radionuclides. Although failure to monitor does not necessarily suggest safety problems, conducting the required monitoring and reporting is critical to ensure that problems will be detected.



During 2005, 87.1 percent of total community supplies were compliant with monitoring and reporting requirements. This is a 1.5 percent increase above 2004 figure. **Graph 6 (below)** summarizes the 2004 and 2005 compliance monitoring and reporting data for population served. The 2005 population served had a 0.8 percent increase over the 2004 population served.



**Community Water System Monitoring Compliance Percentages –Population Served**

---

## **IEPA Enforcement Strategy**

The Illinois EPA has enforcement authority over community water systems in Illinois. Illinois EPA has a standardized protocol for all enforcement matters to ensure unilateral, consistent treatment of enforcement cases. For any violation outlined in the previous pages, a failure to take corrective action could result in the water system being considered for enforcement under Section 31 of the Illinois Environmental Protection Act. Enforcement normally begins with the identification of a significant unresolved violation by technical staff. Information about the violator/violations is forwarded to the Compliance Group (composed of Section Managers). If the Compliance Group determines a Violation Notice (VN) is warranted, the VN recommendation is sent to the Agency's Compliance Management Panel (CMP) for review. After review by the CMP, the Compliance Assurance Section prepares and issues the VN. After the VN is sent, the violator will have a set time period (45 days or 60 days depending on whether a meeting is requested) to respond in writing with a proposed Compliance Commitment Agreement (CCA). Enforcement activities are suspended if the proposed CCA is accepted by the Agency. If at a later point in time, the violator does not follow the CCA agreement, enforcement may resume.

If the proposed CCA is not accepted or the violator fails to respond to the VN, the case is brought before the Enforcement Decision Group (EDG, composed of senior Agency management). EDG will determine the next course of action such as recommending a case for formal enforcement, which consists of referring the water system to the State's Attorney General or the USEPA for filing with a court to direct corrective actions and which may include imposition of penalties or fines.

## **CWS Violation Summary Table**

The following summarizes the percentage of community water systems in compliance with all aspects of the drinking water compliance program. Radionuclide MCLs comprise the largest number of violations, and consequently, cause the largest number of water systems to be out of compliance. Since the end of 2005, the number of water systems with radionuclide MCLs has been reduced to 48 from 90; a 47 percent reduction. With the effective date of the radionuclide rule in December 2003, the remaining systems out of compliance have begun construction on treatment (roughly 42 percent) or have completed construction and are waiting on a running annual average of analyses to fall below the MCL (roughly 10 percent). As these systems conclude construction, compliance numbers will improve. Those systems not making progress on reducing radium MCL levels are proceeding through the enforcement process previously outlined.

**Violations during Calendar Year 2005  
State of Illinois  
Community Water Systems**

<b>Total Number of Regulated Systems</b>	<b>1,800</b>
<b>Total Number of Systems in Violation</b>	<b>422</b>
<b>Total Number of Violations</b>	<b>1,913</b>

**Table 1.**

<b>Rule Subtotal by Violation Type – Community Water Systems</b>									
<b>Violation Category</b>	<b>MCLs</b>			<b>Treatment Techniques</b>			<b>Significant Monitoring/Notification</b>		
	Number of Violations	Number of Systems in Violation*	Compliance Rate	Number of Violations	Number of Systems in Violation*	Compliance Rate	Number of Violations	Number of Systems in Violation*	Compliance Rate
Radiological	381	90	95.0%	-	-	-	61	25	98.6%
IOCs	0	0	100%	-	-	-	373	27	98.5%
SOCs	1	1	99.9%	-	-	-	254	11	99.3%
VOCs	0	0	100%	-	-	-	171	10	99.4%
Nitrate / Nitrite	11	7	99.6%	-	-	-	24	24	98.6%
TCR	49	40	97.7%	-	-	-	119	84	95.3%
All SWTRs	-	-	-	16	12	97.8%	0	0	100%
Stage 1 DBPR	46	15	99.1%	23	7	99.6%	131	83	95.3%
Lead and Copper Rule	-	-	-	14	14	99.2%	64	60	96.6%
Consumer Awareness / Notification	-	-	-	-	-	-	175	140	92.2%
<b>Total PWSs</b>	<b>488</b>	<b>149</b>	<b>91.7%</b>	<b>53</b>	<b>32</b>	<b>98.2%</b>	<b>1372</b>	<b>322</b>	<b>82.1%</b>

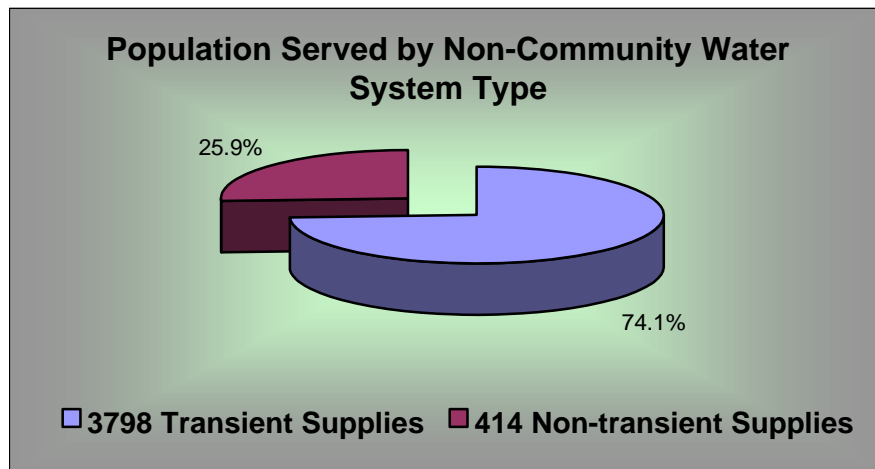
\*Note: Although a CWS may be out of compliance with more than one contaminant or violation type, when calculating totals, it's counted no more than once within the population being totaled. So, the sum of NUMBER OF CWS IN VIOLATION, over the various violation types or contaminants, may not add up to the total.

## Non-Community Public Water Systems

As stated previously, Illinois DPH oversees the non-community water system program. Non-community systems include the **non-transient, non-community public water systems (NTNC)** that serve 25 or more of the same nonresidents at least 180 days out of the year and include facilities such as day care centers, schools and factories. Illinois DPH also supervises the **transient non-community (TNC) public water systems** that serve 25 or more different nonresidents at least 60 days out of the year and include facilities such as campgrounds and highway rest areas.

Graph 7 ►

### Population Distribution Amongst Non-community Systems



Graph 7 depicts how the 536,256 customers served by non-community water systems are distributed between the transient and non-transient systems. Transient supplies (campgrounds, rest areas, etc.) serve a population of 397,448 at 3,798 facilities. Non-transient systems serve 138,808 consumers at 414 systems.

Both NTNC and TNC are required to monitor contaminants like the CWS and issue public notification if in violation. However, TNC only monitor for nitrates, coliform bacteria, and are subject to some requirements of the surface water treatment rule (if they use surface water). NTNC monitors the same contaminants as CWS, but are not required to monitor radionuclides or issue/publish a consumer confidence report.

### Non-CWS Compliance Figures

During calendar year 2005, the percentage of persons served by Illinois **non-community** water systems that were compliant with all health requirements (MCL), treatment techniques (TT), or health advisories (HA) that have been in effect for more than three years was 98.3 percent.

The following page summarizes the percentage of non-community water systems in compliance with all aspects of drinking water compliance.

**Violations during Calendar Year 2005  
State of Illinois  
Non-Community Water Systems**

<b>Total Number of Regulated TNC and NTNC Systems</b>	<b>4212</b>
<b>Total Number of Systems in Violation</b>	<b>302</b>
<b>Total Number of Violations</b>	<b>3164</b>

**Table 2.**

<b>Rule Subtotal by Violation Type – Non-Community Water Systems</b>									
<b>Violation Category</b>	<b>MCLs</b>			<b>Treatment Techniques</b>			<b>Significant Monitoring/Notification</b>		
	Number of Violations	Number of Systems in Violation*	Compliance Rate	Number of Violations	Number of Systems in Violation*	Compliance Rate	Number of Violations	Number of Systems in Violation*	Compliance Rate
IOCs	0	0	100%	-	-	-	504	56	86.5%
SOCs	0	0	100%	-	-	-	1487	78	81.2%
VOCs	1	1	99.8%	-	-	-	798	38	90.8%
Nitrate / Nitrite	7	7	99.8%	-	-	-	10	10	99.8%
TCR	52	51	98.8%	-	-	-	43	42	99.0%
All SWTRs	-	-	-	7	2	90.9%	15	3	86.4%
Stage 1 DBPR	11	3	96.6%	-	-	-	29	11	89.2%
Lead/Copper**	-	-	-	0	0	100%	196	132	68.1%
Consumer Awareness / Notification	-	-	-	-	-	-	4	3	99.9%
<b>Total PWSs</b>	<b>71</b>	<b>62</b>	<b>98.5%</b>	<b>7</b>	<b>2</b>	<b>99.9%</b>	<b>3086</b>	<b>373</b>	<b>91.1%</b>

\*Note: Although a PWS may be out of compliance with more than one contaminant or violation type, when calculating totals, it's counted no more than once within the population being totaled. So, the sum of NUMBER OF PWSs IN VIOLATION, over the various violation types or contaminants, may not add up to the total.

\*\* The compliance rate for LCR monitoring was severely impacted by the loss of the IDPH laboratory capacity to run these analyses for non-community schools. Until 2003, IDPH laboratory analyzed these samples for schools. A large portion of these violations are schools which were unable to get a private laboratory contracted before a violation occurred. IDPH is working with these schools to get the analyses performed and return to compliance.

## Common Terms & Definitions

### **<sup>1</sup>Public Water System (PWS)**

A Public Water System (PWS) is defined as a system that provides water via piping or other constructed conveyances for human consumption to at least 15 service connections or serves an average of at least 25 people for at least 60 days each year. There are three types of PWSs. PWSs can be community (such as towns), non-transient non-community (such as schools or factories), or transient non-community systems (such as rest stops or parks). For this report when the acronym “PWS” is used, it means systems of all types unless specified in greater detail.

### **<sup>2</sup>Maximum Contaminant Level (MCL)**

Under the Safe Drinking Water Act (SDWA), the EPA sets national limits on contaminant levels in drinking water to ensure that the water is safe for human consumption. These limits are known as Maximum Contaminant Levels (MCLs).

### **<sup>3</sup>Maximum Residual Disinfectant Level (MRDL)**

The EPA sets national limits on residual disinfectant levels in drinking water to reduce the risk of exposure to disinfection byproducts formed when public water systems add chemical disinfectant for either primary or residual treatment. These limits are known as Maximum Residual Disinfectant Levels (MRDLs).

### **<sup>4</sup>Treatment Techniques (TT)**

For some regulations, the EPA establishes treatment techniques (TTs) in lieu of an MCL to control unacceptable levels of certain contaminants. For example, treatment techniques have been established for viruses, some bacteria, and turbidity.

### **Return to Compliance**

As noted in the definition of monitoring violations, systems which monitor less frequently than quarterly can return to compliance. Some systems can return to compliance if they monitor for the missed contaminants or submit reports late. In this report, return to compliance rates were determined for inorganic contaminants; nitrate; nitrite; regulated volatile organic contaminants; synthetic organic contaminants; total trihalomethanes; five haloacetic acids (DBPs); and radiological contaminants, as a group.

### **<sup>5</sup>Significant Monitoring and Reporting (M/R) Violations**

A PWS is required to monitor and verify that the levels of contaminants present in the water do not exceed the MCL. If a PWS fails to have its water tested as required or fails to report test results correctly to the appropriate Agency, a monitoring violation occurs. For this report, significant monitoring violations are generally defined as any significant monitoring violation that occurred during the calendar year of the report. A significant monitoring violation, with rare exceptions, occurs when no samples were taken or no results were reported during a compliance period.

### **<sup>6</sup>Significant Consumer Notification Violations**

Every Community Water System is required to deliver to its customers a brief annual water quality report (CCR). This report is to include some educational material, and will provide information on the source water, the levels of any detected contaminants, and compliance with drinking water regulations. For this report, a significant public notification violation occurred if a community water system completely failed to provide its customers the required annual water quality report.

## **OBTAINING COPY OF 2005 PUBLIC WATER SYSTEMS REPORT**

As required by the Safe Drinking Water Act, the Illinois EPA has made the 2005 Public Water Systems report available to the public. Interested individuals can obtain a copy of the 2005 Annual Public Water Systems Report for Illinois by accessing:

**State Website:** <http://www.epa.state.il.us/water/compliance/drinking-water/compliance-report/index.html>

**Telephone:** (217) 785 0561

**Fax Number:** (217) 557 1407

**Address:** Illinois EPA  
Bureau of Water, Compliance Assurance Section  
1021 North Grand Ave  
PO Box 19276  
Springfield, IL 62794

**Contact Name:** Mike Crumly

## **Appendix A**

**The attached tables summarize the number of maximum contaminant level, treatment technique, and significant monitoring violations that occurred during calendar year 2005 for each contaminant regulated by the Safe Drinking Water Act (SDWA). Also identified is the number of public water supplies responsible for the violations and the number of violations that have returned to compliance.**



**Appendix A**  
**Illinois EPA 2005 Annual Compliance Report**  
**Calendar Year 2005**

**Community Water Supplies**

<b>Volatile Organic Chemicals (VOCs)</b>								
<b>Code</b>	<b>Name</b>	<b>MCL (mg/l)</b>	<b>MCLs*</b>			<b>Monitoring*</b>		
			<b># of Violations</b>	<b># of RTC Violations</b>	<b># of PWSs In Violation</b>	<b># of Violations</b>	<b># of RTC Violations</b>	<b># of PWSs In Violation</b>
2977	1,1-Dichloroethylene	0.007	0	0	0	8	4	5
2981	1,1,1-Trichloroethane	0.2	0	0	0	8	4	5
2985	1,1,2-Trichloroethane	0.005	0	0	0	9	5	6
2980	1,2-Dichloroethane	0.005	0	0	0	8	4	5
2983	1,2-Dichloropropane	0.005	0	0	0	8	4	5
2378	1,2,4-Trichlorobenzene	0.07	0	0	0	8	4	5
2990	Benzene	0.005	0	0	0	9	5	6
2982	Carbon Tetrachloride	0.005	0	0	0	8	4	5
2380	Cis-1,2-Dichloroethylene	0.07	0	0	0	8	4	5
2964	Dichloromethane (Methylene Chloride)	0.005	0	0	0	9	5	6
2992	Ethylbenzene	0.7	0	0	0	9	5	6
2989	Monochlorobenzene (Chlorobenzene)	0.1	0	0	0	8	4	5
2968	o-Dichlorobenzene	0.6	0	0	0	8	4	5
2969	p-Dichlorobenzene	0.075	0	0	0	8	4	5
2996	Styrene	0.1	0	0	0	9	5	6
2987	Tetrachloroethylene	0.005	0	0	0	9	5	6
2991	Toluene	1	0	0	0	9	5	6
2979	Trans-1,2-Dichloroethylene	0.1	0	0	0	8	4	5
2984	Trichloroethylene	0.005	0	0	0	9	5	6
2955	Xylenes, Total	10	0	0	0	10	6	7
2976	Vinyl Chloride	0.002	0	0	0	1	1	1
<b>VOC Totals</b>			<b>0</b>	<b>0</b>	<b>0</b>	<b>171</b>	<b>91</b>	<b>10</b>

Note: Although a PWS may be out of compliance with more than one contaminant or violation type, when calculating totals, it's counted no more than once within the population being totaled. So, the sum of NUMBER OF PWSs IN VIOLATION, over the various violation types or contaminants, may not add up to the total.

**Appendix A**  
**Illinois EPA 2005 Annual Compliance Report**  
**Calendar Year 2005**  
**Community Water Supplies**

Synthetic Organic Chemicals (SOCs)								
Code	Name	MCL (mg/l)	MCLs*			Monitoring*		
			# of Violations	# of RTC Violations	# of PWSs In Violation	# of Violations	# of RTC Violations	# of PWSs In Violation
2931	1,2 Dibromo-3-Chloropropane (DBCP)	0.0002	0	0	0	8	5	6
2105	2,4-D	0.07	0	0	0	8	5	6
2063	2,3,7,8-TCDD (Dioxin)	3x10-8	0	0	0	0	0	0
2110	2,4,5-TP (Silvex)	0.05	0	0	0	8	5	6
2051	Alachlor (Lasso)	0.002	0	0	0	9	6	7
2050	Atrazine	0.003	0	0	0	8	5	6
2306	Benzo (A) Pyrene	0.0002	0	0	0	9	5	7
2010	BHC-gamma (Lindane)	0.0002	0	0	0	8	5	6
2046	Carbofuran	0.04	0	0	0	8	5	6
2959	Chlordane	0.002	0	0	0	8	5	6
2031	Dalapon	0.2	0	0	0	8	5	6
2035	Di(2-Ethylhexyl) Adipate	0.4	0	0	0	8	5	6
2039	Di(2-Ethylhexyl) Phthalate	0.006	0	0	0	10	7	8
2041	Dinoseb	0.007	0	0	0	8	5	6
2032	Diquat	0.02	0	0	0	8	5	6
2033	Endothall	0.1	0	0	0	8	5	6
2005	Endrin	0.002	0	0	0	8	5	6
2946	Ethylene Dibromide (EDB)	0.00005	0	0	0	8	5	6
2034	Glyphosate	0.7	0	0	0	0	0	0
2065	Heptachlor	0.0004	0	0	0	8	5	6
2067	Heptachlor Epoxide	0.0002	0	0	0	8	5	6
2274	Hexachlorobenzene (HCB)	0.001	0	0	0	8	5	6
2042	Hexachlorocyclopentadiene	0.05	0	0	0	8	5	6
2015	Methoxychlor	0.04	0	0	0	8	5	6
2036	Oxamyl (Vydate)	0.2	0	0	0	8	5	6
2326	Pentachlorophenol	0.001	0	0	0	9	6	7
2040	Picloram	0.5	0	0	0	8	5	6

Note: Although a PWS may be out of compliance with more than one contaminant or violation type, when calculating totals, it's counted no more than once within the population being totaled. So, the sum of NUMBER OF PWSs IN VIOLATION, over the various violation types or contaminants, may not add up to the total.

**Appendix A**  
**Illinois EPA 2005 Annual Compliance Report**  
**Calendar Year 2005**  
**Community Water Supplies**

SOCs continued								
Code	Name	MCL (mg/l)	MCLs*			Monitoring*		
			# of Violations	# of RTC Violations	# of PWSs In Violation	# of Violations	# of RTC Violations	# of PWSs In Violation
2037	Simazine	0.004	1	0	1	9	6	7
2383	Total Polychlorinated Biphenyls (PCB)	0.0005	0	0	0	8	5	6
2020	Toxaphene	0.003	0	0	0	8	5	6
<b>SOC Totals</b>			<b>1</b>	<b>0</b>	<b>1</b>	<b>254</b>	<b>160</b>	<b>11</b>

Code	Name	MCL (mg/l)	Treatment Technique*			Monitoring*		
			# of Violations	# of RTC Violations	# of PWSs In Violation	# of Violations	# of RTC Violations	# of PWSs In Violation
2257	Epichlorohydrin	TT	0	0	0	0	0	0
2265	Acrylamide	TT	0	0	0	0	0	0
<b>Totals</b>			<b>0</b>	<b>0</b>	<b>0</b>	<b>0</b>	<b>0</b>	<b>0</b>

Note: Although a PWS may be out of compliance with more than one contaminant or violation type, when calculating totals, it's counted no more than once within the population being totaled. So, the sum of NUMBER OF PWSs IN VIOLATION, over the various violation types or contaminants, may not add up to the total.

**Appendix A**  
**Illinois EPA 2005 Annual Compliance Report**  
**Calendar Year 2005**  
**Community Water Supplies**

Inorganic Chemicals (IOCs)								
Code	Name	MCL (mg/l)	MCLs*			Monitoring*		
			# of Violations	# of RTC Violations	# of PWSs In Violation	# of Violations	# of RTC Violations	# of PWSs In Violation
1074	Antimony, Total	0.006	0	0	0	22	22	22
1005	Arsenic	0.05	0	0	0	23	23	23
1010	Barium	2	0	0	0	24	24	24
1075	Beryllium, Total	0.004	0	0	0	23	23	23
1015	Cadmium	0.005	0	0	0	24	23	24
1020	Chromium	0.1	0	0	0	23	23	23
1024	Cyanide	0.2	0	0	0	24	24	24
1025	Fluoride	4	0	0	0	21	21	21
1035	Mercury	0.002	0	0	0	21	21	21
1040	Nitrate	10	9	9	5	22	18	22
1038	Total Nitrite & Nitrate	10	0	0	0	0	0	0
1041	Nitrite	1	2	2	2	2	2	2
1045	Selenium	0.05	0	0	0	23	23	23
1085	Thallium, Total	0.002	0	0	0	23	23	23
1094	Asbestos	7 MFL	0	0	0	0	0	0
<b>IOC Totals</b>			<b>11</b>	<b>11</b>	<b>7</b>	<b>397</b>	<b>392</b>	<b>46</b>

Note: Although a PWS may be out of compliance with more than one contaminant or violation type, when calculating totals, it's counted no more than once within the population being totaled. So, the sum of NUMBER OF PWSs IN VIOLATION, over the various violation types or contaminants, may not add up to the total.

**Appendix A**  
**Illinois EPA 2005 Annual Compliance Report**  
**Calendar Year 2005**  
**Community Water Supplies**

<b>Radionuclide Contaminants (RAD)</b>								
<b>Code</b>	<b>Name</b>	<b>MCL</b>	<b>MCLs*</b>			<b>Monitoring*</b>		
			<b># of Violations</b>	<b># of RTC Violations</b>	<b># of PWSs In Violation</b>	<b># of Violations</b>	<b># of RTC Violations</b>	<b># of PWSs In Violation</b>
4000 & 4109	Gross Alpha Adjusted Gross Alpha	15 pCi/L	94	52	34	20	18	18
4010	Radium-226 & Radium-228	5 pCi/L	287	101	90	21	18	19
4006	Uranium	30 pCi/L	0	0	0	20	18	16
4100	Gross Beta	4/mrem/yr	0	0	0	0	0	0
<b>RAD Totals</b>			<b>381</b>	<b>153</b>	<b>90</b>	<b>61</b>	<b>54</b>	<b>25</b>

<b>Coliform (TCR)</b>							
<b>Violation Type</b>	<b>Violation Name</b>	<b># of Violations*</b>	<b># of RTC Violations*</b>	<b># of PWSs In Violation*</b>			
21	MCL, Acute	3	3	3			
22	MCL, Monthly	46	46	40			
23, 25	Monitoring Routine & Repeat Major	119	113	84			
		<b>MCLs*</b>			<b>Monitoring*</b>		
		<b># of Violations</b>	<b># of RTC Violations</b>	<b># of PWSs In Violation</b>	<b># of Violations</b>	<b># of RTC Violations</b>	<b># of PWSs In Violation</b>
<b>TCR Totals</b>		<b>49</b>	<b>49</b>	<b>40</b>	<b>119</b>	<b>113</b>	<b>84</b>

Note: Although a PWS may be out of compliance with more than one contaminant or violation type, when calculating totals, it's counted no more than once within the population being totaled. So, the sum of NUMBER OF PWSs IN VIOLATION, over the various violation types or contaminants, may not add up to the total.

*Appendix A*  
*Illinois EPA 2005 Annual Compliance Report*  
*Calendar Year 2005*  
**Community Water Supplies**

<b>Surface Water Treatment Rules (SWTR)</b>									
<b>Violation Type</b>	<b>Contam Code</b>	<b>Violation Name</b>	<b># of Violations*</b>			<b># of RTC Violations*</b>		<b># of PWSs In Violation*</b>	
41 SWTR	0200	SWTR Treatment Technique, Filtered	2			2		1	
42 SWTR	0200	SWTR Treatment Technique, Unfiltered	0			0		0	
31and 36	0200	SWTR Major Monitoring, (M/R)	0			0		0	
03 SWTR	0100	Turbidity Monitoring/Reporting	0			0		0	
37 IESWTR	0300	IESWTR Treatment Technique Failure to Profile	1			0		1	
43, 44, and 47 IESWTR	0300	IESWTR Treatment Technique	13			9		10	
29 and 38 IESWTR	0300	IESWTR Major Monitoring	0			0		0	
09 IESWTR	0300	IESWTR Record Keeping	0			0		0	
<b>MCLs*    Monitoring*    Treatment Technique*</b>									
	<b># of Violations</b>	<b># of RTC Violations</b>	<b># of PWSs In Violation</b>	<b># of Violations</b>	<b># of RTC Violations</b>	<b># of PWSs In Violation</b>	<b># of Violations</b>	<b># of RTC Violations</b>	<b># of PWSs In Violation</b>
<b>SWTR/IESWTR Total</b>	<b>0</b>	<b>0</b>	<b>0</b>	<b>0</b>	<b>0</b>	<b>0</b>	<b>16</b>	<b>11</b>	<b>12</b>

Note: Although a PWS may be out of compliance with more than one contaminant or violation type, when calculating totals, it's counted no more than once within the population being totaled. So, the sum of NUMBER OF PWSs IN VIOLATION, over the various violation types or contaminants, may not add up to the total.

**Appendix A**  
**Illinois EPA 2005 Annual Compliance Report**  
**Calendar Year 2005**  
**Community Water Supplies**

Stage 1 Disinfectants and Disinfection Byproducts Rule (Stage 1 DBPR)										
Violation Type	Contam Code	Violation Name	# of Violations*	# of RTC Violations*	# of PWSs In Violation*					
12 and 37	0400	Qualified Operator Failure or Failure to Profile/Consult TT	0	0	0					
46	2920	Inadequate DBP Precursor Removal Treatment Technique	23	18	7					
02	1011	Bromate MCL	0	0	0					
02	1009	Chlorite MCL	0	0	0					
02	2456	Total Haloacetic Acids (HAA) MCL	13	7	6					
02	2950	Total Trihalomethanes (TTHM) MCL	33	16	13					
11	0999	Chlorine Maximum Residual Disinfectant Level (MRDL)	0	0	0					
11	1006	Chloramine MRDL	0	0	0					
11	1008	Chlorine Dioxide MRDL	0	0	0					
11	1008	Chlorine Dioxide Monitoring	0	0	0					
13	1008	Chlorine Dioxide MRDL Acute	0	0	0					
27	0400	No DBPR Monitoring Plan	0	0	0					
27	0999	Chlorine Monitoring	86	80	65					
27	1004	Bromide Monitoring	0	0	0					
27	1006	Chloramine Residual Monitoring	1	1	1					
27	1008	Chlorine Dioxide Residual Monitoring	0	0	0					
27	1009	Chlorite Monitoring	0	0	0					
27	1011	Bromate Monitoring	0	0	0					
27	2456	Total Haloacetic Acids (HAA) Monitoring	18	14	16					
27	2920	TOC Monitoring	6	6	3					
27	1927	Alkalinity	3	3	3					
27	2950	Total Trihalomethanes (TTHM) Monitoring	17	13	16					
		<b>MCLs/MRDL *</b>	<b>Monitoring*</b>			<b>Treatment Technique*</b>				
		# of Violations	# of RTC Violations	# of PWSs In Violation	# of Violations	# of RTC Violations	# of PWSs In Violation	# of Violations	# of RTC Violations	# of PWSs In Violation
<b>Stage 1 DBPR Totals</b>		<b>46</b>	<b>23</b>	<b>15</b>	<b>131</b>	<b>117</b>	<b>83</b>	<b>23</b>	<b>18</b>	<b>7</b>

Note: Although a PWS may be out of compliance with more than one contaminant or violation type, when calculating totals, it's counted no more than once within the population being totaled. So, the sum of NUMBER OF PWSs IN VIOLATION, over the various violation types or contaminants, may not add up to the total.

**Appendix A**  
**Illinois EPA 2005 Annual Compliance Report**  
**Calendar Year 2005**  
**Community Water Supplies**

<b>Lead and Copper Rule (LCR)</b>							
<b>Violation Type</b>	<b>Violation Name</b>	<b># of Violations*</b>		<b># of RTC Violations*</b>		<b># of PWSs In Violation*</b>	
51	Monitoring, Initial Tap Sampling for Pb/Cu	15		2		13	
52	Monitoring, Follow-up & Routine Tap Sampling for Pb/Cu	49		28		45	
58	Treatment Installation	1		1		1	
59	Water Quality Parameter TT	4		2		4	
65	Public Education	9		6		9	
		<b>Monitoring*</b>			<b>Treatment Technique*</b>		
		<b># of Violations</b>	<b># of RTC Violations</b>	<b># of PWSs In Violation</b>	<b># of Violations</b>	<b># of RTC Violations</b>	<b># of PWSs In Violation</b>
<b>LCR Totals</b>		<b>64</b>	<b>30</b>	<b>60</b>	<b>14</b>	<b>9</b>	<b>14</b>

<b>Consumer Notification</b>						
<b>Violation Type</b>	<b>Violation Name</b>	<b># of Violations*</b>		<b># of RTC Violations*</b>		<b># of PWSs In Violation*</b>
71	CCR, Significant Reporting	36		34		36
75 and 76	Public Notice Rule Reporting	139		129		106
<b>TOTAL</b>		<b>175</b>		<b>163</b>		<b>140</b>

Note: Although a PWS may be out of compliance with more than one contaminant or violation type, when calculating totals, it's counted no more than once within the population being totaled. So, the sum of NUMBER OF PWSs IN VIOLATION, over the various violation types or contaminants, may not add up to the total.



**Appendix A**  
**Illinois EPA 2005 Annual Compliance Report**  
**Calendar Year 2005**  
**Non - Community Water Supplies**

Volatile Organic Chemicals (VOCs)								
Code	Name	MCL (mg/l)	MCLs*			Monitoring*		
			# of Violations	# of RTC Violations	# of PWSs In Violation	# of Violations	# of RTC Violations	# of PWSs In Violation
2977	1,1-Dichloroethylene	0.007	0	0	0	38	2	38
2981	1,1,1-Trichloroethane	0.2	0	0	0	38	2	38
2985	1,1,2-Trichloroethane	0.005	0	0	0	38	2	38
2980	1,2-Dichloroethane	0.005	0	0	0	38	2	38
2983	1,2-Dichloropropane	0.005	0	0	0	38	2	38
2378	1,2,4-Trichlorobenzene	0.07	0	0	0	38	2	38
2990	Benzene	0.005	0	0	0	38	2	38
2982	Carbon Tetrachloride	0.005	0	0	0	38	2	38
2380	Cis-1,2-Dichloroethylene	0.07	0	0	0	38	2	38
2964	Dichloromethane (Methylene Chloride)	0.005	0	0	0	38	2	38
2992	Ethylbenzene	0.7	0	0	0	38	2	38
2989	Monochlorobenzene (Chlorobenzene)	0.1	0	0	0	38	2	38
2968	o-Dichlorobenzene	0.6	0	0	0	38	2	38
2969	p-Dichlorobenzene	0.075	0	0	0	38	2	38
2996	Styrene	0.1	0	0	0	38	2	38
2987	Tetrachloroethylene	0.005	0	0	0	38	2	38
2991	Toluene	1	0	0	0	38	2	38
2979	Trans-1,2-Dichloroethylene	0.1	0	0	0	38	2	38
2984	Trichloroethylene	0.005	1	0	1	38	2	38
2955	Xylenes, Total	10	0	0	0	38	2	38
2976	Vinyl Chloride	0.002	0	0	0	38	2	38
<b>VOC Totals</b>			<b>1</b>	<b>0</b>	<b>1</b>	<b>798</b>	<b>42</b>	<b>38</b>

Note: Although a PWS may be out of compliance with more than one contaminant or violation type, when calculating totals, it's counted no more than once within the population being totaled. So, the sum of NUMBER OF PWSs IN VIOLATION, over the various violation types or contaminants, may not add up to the total.

**Appendix A**  
**Illinois EPA 2005 Annual Compliance Report**  
**Calendar Year 2005**  
**Non - Community Water Supplies**

Synthetic Organic Chemicals (SOCs)								
Code	Name	MCL (mg/l)	MCLs*			Monitoring*		
			# of Violations	# of RTC Violations	# of PWSs In Violation	# of Violations	# of RTC Violations	# of PWSs In Violation
2931	1,2 Dibromo-3-Chloropropane (DBCP)	0.0002	0	0	0	63	5	62
2105	2,4-D	0.07	0	0	0	63	5	62
2063	2,3,7,8-TCDD (Dioxin)	3x10-8	0	0	0	0	0	0
2110	2,4,5-TP (Silvex)	0.05	0	0	0	63	5	62
2051	Alachlor (Lasso)	0.002	0	0	0	63	5	62
2050	Atrazine	0.003	0	0	0	63	5	62
2306	Benzo (A) Pyrene	0.0002	0	0	0	16	0	16
2010	BHC-gamma (Lindane)	0.0002	0	0	0	63	5	62
2046	Carbofuran	0.04	0	0	0	63	5	62
2959	Chlordane	0.002	0	0	0	63	5	62
2031	Dalapon	0.2	0	0	0	16	0	16
2035	Di(2-Ethylhexyl) Adipate	0.4	0	0	0	16	0	16
2039	Di(2-Ethylhexyl) Phthalate	0.006	0	0	0	16	0	16
2041	Dinoseb	0.007	0	0	0	16	0	16
2032	Diquat	0.02	0	0	0	69	4	68
2033	Endothall	0.1	0	0	0	69	4	68
2005	Endrin	0.002	0	0	0	16	0	16
2946	Ethylene Dibromide (EDB)	0.00005	0	0	0	63	5	62
2034	Glyphosate	0.7	0	0	0	69	4	68
2065	Heptachlor	0.0004	0	0	0	63	5	62
2067	Heptachlor Epoxide	0.0002	0	0	0	63	5	62
2274	Hexachlorobenzene (HCB)	0.001	0	0	0	16	0	16
2042	Hexachlorocyclopentadiene	0.05	0	0	0	16	0	16
2015	Methoxychlor	0.04	0	0	0	63	5	62
2036	Oxamyl (Vydate)	0.2	0	0	0	69	4	68
2326	Pentachlorophenol	0.001	0	0	0	63	5	62
2040	Picloram	0.5	0	0	0	69	4	68

Note: Although a PWS may be out of compliance with more than one contaminant or violation type, when calculating totals, it's counted no more than once within the population being totaled. So, the sum of NUMBER OF PWSs IN VIOLATION, over the various violation types or contaminants, may not add up to the total.

**Appendix A**  
**Illinois EPA 2005 Annual Compliance Report**  
**Calendar Year 2005**  
**Non - Community Water Supplies**

<b>SOCs continued</b>								
<b>Code</b>	<b>Name</b>	<b>MCL (mg/l)</b>	<b>MCLs*</b>			<b>Monitoring*</b>		
			<b># of Violations</b>	<b># of RTC Violations</b>	<b># of PWSs In Violation</b>	<b># of Violations</b>	<b># of RTC Violations</b>	<b># of PWSs In Violation</b>
2037	Simazine	0.004	0	0	0	69	4	68
2383	Total Polychlorinated Biphenyls (PCB)	0.0005	0	0	0	63	5	62
2020	Toxaphene	0.003	0	0	0	63	5	62
<b>SOC Totals</b>			<b>0</b>	<b>0</b>	<b>0</b>	<b>1487</b>	<b>99</b>	<b>78</b>

<b>Code</b>	<b>Name</b>	<b>MCL (mg/l)</b>	<b>Treatment Technique*</b>			<b>Monitoring*</b>		
			<b># of Violations</b>	<b># of RTC Violations</b>	<b># of PWSs In Violation</b>	<b># of Violations</b>	<b># of RTC Violations</b>	<b># of PWSs In Violation</b>
2257	Epichlorohydrin	TT	0	0	0	0	0	0
2265	Acrylamide	TT	0	0	0	0	0	0
<b>Totals</b>			<b>0</b>	<b>0</b>	<b>0</b>	<b>0</b>	<b>0</b>	<b>0</b>

Note: Although a PWS may be out of compliance with more than one contaminant or violation type, when calculating totals, it's counted no more than once within the population being totaled. So, the sum of NUMBER OF PWSs IN VIOLATION, over the various violation types or contaminants, may not add up to the total.

**Appendix A**  
**Illinois EPA 2005 Annual Compliance Report**  
**Calendar Year 2005**  
**Non - Community Water Supplies**

<b>Inorganic Chemicals (IOCs)</b>								
<b>Code</b>	<b>Name</b>	<b>MCL (mg/l)</b>	<b>MCLs*</b>			<b>Monitoring*</b>		
			<b># of Violations</b>	<b># of RTC Violations</b>	<b># of PWSs In Violation</b>	<b># of Violations</b>	<b># of RTC Violations</b>	<b># of PWSs In Violation</b>
1074	Antimony, Total	0.006	0	0	0	56	2	56
1005	Arsenic	0.05	0	0	0	0	0	0
1010	Barium	2	0	0	0	56	2	56
1075	Beryllium, Total	0.004	0	0	0	56	2	56
1015	Cadmium	0.005	0	0	0	56	2	56
1020	Chromium	0.1	0	0	0	56	2	56
1024	Cyanide	0.2	0	0	0	56	2	56
1025	Fluoride	4	0	0	0	0	0	0
1035	Mercury	0.002	0	0	0	56	2	56
1040	Nitrate	10	7	1	7	10	0	10
1038	Total Nitrite & Nitrate	10	0	0	0	0	0	0
1041	Nitrite	1	0	0	0	0	0	0
1045	Selenium	0.05	0	0	0	56	2	56
1085	Thallium, Total	0.002	0	0	0	56	2	56
1094	Asbestos	7 MFL	0	0	0	0	0	0
<b>IOC Totals</b>			<b>7</b>	<b>1</b>	<b>7</b>	<b>514</b>	<b>18</b>	<b>66</b>

Note: Although a PWS may be out of compliance with more than one contaminant or violation type, when calculating totals, it's counted no more than once within the population being totaled. So, the sum of NUMBER OF PWSs IN VIOLATION, over the various violation types or contaminants, may not add up to the total.

**Appendix A**  
**Illinois EPA 2005 Annual Compliance Report**  
**Calendar Year 2005**  
**Non - Community Water Supplies**

<b>Coliform (TCR)</b>							
<b>Violation Type</b>	<b>Violation Name</b>	<b># of Violations*</b>		<b># of RTC Violations*</b>	<b># of PWSs In Violation*</b>		
21	MCL, Acute	3		1	3		
22	MCL, Monthly	49		30	48		
23, 25	Monitoring Routine & Repeat Major	43		11	42		
		<b>MCLs*</b>			<b>Monitoring*</b>		
		<b># of Violations</b>	<b># of RTC Violations</b>	<b># of PWSs In Violation</b>	<b># of Violations</b>	<b># of RTC Violations</b>	<b># of PWSs In Violation</b>
<b>TCR Totals</b>		<b>52</b>	<b>31</b>	<b>51</b>	<b>43</b>	<b>11</b>	<b>42</b>

<b>Lead and Copper Rule (LCR)</b>							
<b>Violation Type</b>	<b>Violation Name</b>	<b># of Violations*</b>		<b># of RTC Violations*</b>	<b># of PWSs In Violation*</b>		
51	Monitoring, Initial Tap Sampling for Pb/Cu	0		0	0		
52	Monitoring, Follow-up & Routine Tap Sampling for Pb/Cu	158		27	128		
53	Water Quality Parameter M&R	1		1	1		
57	OCCT/SOWT Recommendation/Study	20		0	20		
58	Treatment Installation	0		0	0		
59	Water Quality Parameter TT	0		0	0		
65	Public Education	17		0	17		
		<b>Monitoring*</b>			<b>Treatment Technique*</b>		
		<b># of Violations</b>	<b># of RTC Violations</b>	<b># of PWSs In Violation</b>	<b># of Violations</b>	<b># of RTC Violations</b>	<b># of PWSs In Violation</b>
<b>LCR Totals</b>		<b>196</b>	<b>28</b>	<b>132</b>	<b>0</b>	<b>0</b>	<b>0</b>

\*The compliance rate for LCR monitoring was severely impacted by the loss of the IDPH laboratory capacity to run these analyses for non-community schools. Until 2003, IDPH laboratory analyzed these samples for schools. A large portion of these violations are schools which were unable to get a private laboratory contracted before a violation occurred. IDPH is working with these schools to get the analyses performed and return to compliance.

Note: Although a PWS may be out of compliance with more than one contaminant or violation type, when calculating totals, it's counted no more than once within the population being totaled. So, the sum of NUMBER OF PWSs IN VIOLATION, over the various violation types or contaminants, may not add up to the total.

**Appendix A**  
**Illinois EPA 2005 Annual Compliance Report**  
**Calendar Year 2005**  
**Non - Community Water Supplies**

<b>Surface Water Treatment Rules (SWTR)</b>									
<b>Violation Type</b>	<b>Contam Code</b>	<b>Violation Name</b>	<b># of Violations*</b>			<b># of RTC Violations*</b>			<b># of PWSs In Violation*</b>
41 SWTR	0200	SWTR Treatment Technique, Filtered	0			0			0
42 SWTR	0200	SWTR Treatment Technique, Unfiltered	0			0			0
31 and 36	0200	SWTR Major Monitoring, (M/R)	15			5			3
03 SWTR	0100	Turbidity Monitoring/Reporting	0			0			0
37 IESWTR	0300	IESWTR Treatment Technique Failure to Profile	0			0			0
43, 44, and 47 IESWTR	0300	IESWTR Treatment Technique	7			7			2
29 and 38 IESWTR	0300	IESWTR Major Monitoring	0			0			0
09 IESWTR	0300	IESWTR Record Keeping	0			0			0
	<b>MCLs*</b>			<b>Monitoring*</b>			<b>Treatment Technique*</b>		
	<b># of Violations</b>	<b># of RTC Violations</b>	<b># of PWSs In Violation</b>	<b># of Violations</b>	<b># of RTC Violations</b>	<b># of PWSs In Violation</b>	<b># of Violations</b>	<b># of RTC Violations</b>	<b># of PWSs In Violation</b>
<b>SWTR/IESWTR Total</b>	<b>0</b>	<b>0</b>	<b>0</b>	<b>15</b>	<b>5</b>	<b>3</b>	<b>7</b>	<b>7</b>	<b>2</b>

Note: Although a PWS may be out of compliance with more than one contaminant or violation type, when calculating totals, it's counted no more than once within the population being totaled. So, the sum of NUMBER OF PWSs IN VIOLATION, over the various violation types or contaminants, may not add up to the total.

**Appendix A**  
**Illinois EPA 2005 Annual Compliance Report**  
**Calendar Year 2005**  
**Non - Community Water Supplies**

Stage 1 Disinfectants and Disinfection Byproducts Rule (Stage 1 DBPR)										
Violation Type	Contam Code	Violation Name	# of Violations*	# of RTC Violations*	# of PWSs In Violation*					
12 and 37	0400	Qualified Operator Failure or Failure to Profile/Consult TT	0	0	0					
46	2920	Inadequate DBP Precursor Removal Treatment Technique	0	0	0					
02	1011	Bromate MCL	0	0	0					
02	1009	Chlorite MCL	0	0	0					
02	2456	Total Haloacetic Acids (HAA) MCL	4	4	2					
02	2950	Total Trihalomethanes (TTHM) MCL	7	7	3					
11	0999	Chlorine Maximum Residual Disinfectant Level (MRDL)	0	0	0					
11	1006	Chloramine MRDL	0	0	0					
11	1008	Chlorine Dioxide MRDL	0	0	0					
11	1008	Chlorine Dioxide Monitoring	0	0	0					
13	1008	Chlorine Dioxide MRDL Acute	0	0	0					
27	0400	No DBPR Monitoring Plan	0	0	0					
27	0999	Chlorine Monitoring	0	0	0					
27	1004	Bromide Monitoring	0	0	0					
27	1006	Chloramine Residual Monitoring	0	0	0					
27	1008	Chlorine Dioxide Residual Monitoring	0	0	0					
27	1009	Chlorite Monitoring	0	0	0					
27	1011	Bromate Monitoring	11	11	2					
27	2456	Total Haloacetic Acids (HAA) Monitoring	9	1	9					
27	2920	TOC Monitoring	0	0	0					
27	2950	Total Trihalomethanes (TTHM) Monitoring	9	1	9					
		<b>MCLs/MRDL *</b>	<b>Monitoring*</b>			<b>Treatment Technique*</b>				
		# of Violations	# of RTC Violations	# of PWSs In Violation	# of Violations	# of RTC Violations	# of PWSs In Violation	# of Violations	# of RTC Violations	# of PWSs In Violation
<b>Stage 1 DBPR Totals</b>		<b>11</b>	<b>11</b>	<b>3</b>	<b>29</b>	<b>13</b>	<b>11</b>	<b>0</b>	<b>0</b>	<b>0</b>

Note: Although a PWS may be out of compliance with more than one contaminant or violation type, when calculating totals, it's counted no more than once within the population being totaled. So, the sum of NUMBER OF PWSs IN VIOLATION, over the various violation types or contaminants, may not add up to the total.

**Appendix A**  
**Illinois EPA 2005 Annual Compliance Report**  
**Calendar Year 2005**  
**Community Water Supplies**

<b>2005 State Summary – Community Water Supplies (CWS)</b>										
<b>Rule Group</b>	<b>Chemical Sub-Group</b>	<b>MCLs*</b>			<b>Monitoring/Notification*</b>			<b>Treatment Technique*</b>		
		<b># of Violations</b>	<b># of RTC Violations</b>	<b># of PWSs In Violation</b>	<b># of Violations</b>	<b># of RTC Violations</b>	<b># of PWSs In Violation</b>	<b># of Violations</b>	<b># of RTC Violations</b>	<b># of PWSs In Violation</b>
CHEM	VOC	0	0	0	171	91	10			
	SOC	1	0	1	254	160	11			
	IOC	0	0	0	373	372	27			
	NO2/NO3	11	11	7	24	20	24			
	RAD	381	153	90	61	54	25			
<b>CHEM Subtotal</b>		393	164	98	883	697	78			
<b>TCR Subtotal</b>		49	49	40	119	113	84			
<b>Stage 1 DBPR Subtotal</b>		46	23	15	131	117	83	23	18	7
<b>All SWTRs Subtotal</b>					0	0	0	16	11	12
<b>LCR Subtotal</b>					64	30	60	14	9	14
<b>Consumer Notification Subtotal</b>					175	163	140			
<b>TOTAL</b>		<b>488</b>	<b>236</b>	<b>149</b>	<b>1,372</b>	<b>1,120</b>	<b>322</b>	<b>53</b>	<b>38</b>	<b>32</b>
<b>Total Number of CWSs</b>				<b>Grand Total Number CWS Violations (MCL, Monitoring, and Treatment Technique)</b>			<b>Grand Total of CWSs in Violation (MCL, Monitoring, and Treatment Technique)</b>			
<b>1,800</b>				<b>1,913</b>			<b>422</b>			

Note: Although a PWS may be out of compliance with more than one contaminant or violation type, when calculating totals, it's counted no more than once within the population being totaled. So, the sum of NUMBER OF PWSs IN VIOLATION, over the various violation types or contaminants, may not add up to the total.



**Appendix A**  
**Illinois EPA 2005 Annual Compliance Report**  
**Calendar Year 2005**  
**Non - Community Water Supplies**

<b>2005 State Summary – Non-Community Water Supplies (CWS)</b>										
<b>Rule Group</b>	<b>Chemical Sub-Group</b>	<b>MCLs*</b>			<b>Monitoring/Notification*</b>			<b>Treatment Technique*</b>		
		<b># of Violations</b>	<b># of RTC Violations</b>	<b># of PWSs In Violation</b>	<b># of Violations</b>	<b># of RTC Violations</b>	<b># of PWSs In Violation</b>	<b># of Violations</b>	<b># of RTC Violations</b>	<b># of PWSs In Violation</b>
CHEM	VOC	1	0	1	798	42	38			
	SOC	0	0	0	1487	99	78			
	IOC	0	0	0	504	18	56			
	NO2/NO3	7	1	7	10	0	10			
<b>CHEM Subtotal</b>		8	1	8	2799	159	182			
<b>TCR Subtotal</b>		52	31	51	43	11	42			
<b>Stage 1 DBPR Subtotal</b>		11	11	3	29	13	11	0	0	0
<b>All SWTRs Subtotal</b>					15	5	3	7	7	2
<b>LCR Subtotal</b>					196	28	132	0	0	0
<b>Consumer Notification Subtotal</b>					4	4	3			
<b>TOTAL</b>		<b>71</b>	<b>43</b>	<b>62</b>	<b>3086</b>	<b>220</b>	<b>373</b>	<b>7</b>	<b>7</b>	<b>2</b>
<b>Total Number of CWSs</b>				<b>Grand Total Number CWS Violations (MCL, Monitoring, and Treatment Technique)</b>				<b>Grand Total of CWSs in Violation (MCL, Monitoring, and Treatment Technique)</b>		
<b>4212</b>				<b>3164</b>				<b>302</b>		

Note: Although a PWS may be out of compliance with more than one contaminant or violation type, when calculating totals, it's counted no more than once within the population being totaled. So, the sum of NUMBER OF PWSs IN VIOLATION, over the various violation types or contaminants, may not add up to the total.

## **Appendix B**

**The attached report identifies all public water supplies with maximum contaminant level and treatment technique violations in contaminant order.**

# *Appendix B*

## *Illinois EPA 2005 Annual Compliance*

### *Maximum Contaminant Level and Treatment Technique Violations*

#### *Listing by Contaminant*

<u>Facility Number and Name</u>	<u>Contaminant</u>	<u>Comments</u>
IL0630050 BRACEVILLE	<b>Coliform (Acute) MCL</b>	Returned to Compliance
IL3122804 FAIRVIEW UNITED METHODIST CH	<b>Coliform (Acute) MCL</b>	Enforcement in Process
IL3126565 HIS REST BED & BREAKFAST	<b>Coliform (Acute) MCL</b>	Returned to Compliance
IL3138958 JOHN DOUGH/MY PLACE	<b>Coliform (Acute) MCL</b>	Enforcement in process
IL1970750 PEOTONE	<b>Coliform (Acute) MCL</b>	Returned to Compliance
IL3148106 ALTO VINEYARD	<b>Coliform MCL</b>	Returned to Compliance
IL1830050 ALVAN	<b>Coliform MCL</b>	Returned to Compliance
IL3113589 AMEREN-CILCO-EASTERN SERVICE CENTER	<b>Coliform MCL</b>	Returned to Compliance
IL0850050 APPLE RIVER	<b>Coliform MCL</b>	Returned to Compliance
IL1830500 AQUA ILLINOIS-INDIANOLA	<b>Coliform MCL</b>	Returned to Compliance
IL3021824 ARGYLE LAKE STATE PARK (21824)	<b>Coliform MCL</b>	Enforcement in process
IL0730200 ATKINSON	<b>Coliform MCL</b>	Returned to Compliance
IL1090050 BARDOLPH	<b>Coliform MCL</b>	Returned to Compliance
IL3020636 BERTS AT OAKHILL	<b>Coliform MCL</b>	Enforcement in process
IL1015300 BIRDS PINKSTAFF WATER DISTRICT	<b>Coliform MCL</b>	Returned to Compliance
IL0630050 BRACEVILLE	<b>Coliform MCL</b>	Returned to Compliance
IL0570200 BRYANT	<b>Coliform MCL</b>	Returned to Compliance
IL3102210 BUSSE WOODS SOUTH 1231	<b>Coliform MCL</b>	Enforcement in process
IL3048959 BYRON HILLS GOLF COURSE	<b>Coliform MCL</b>	Returned to Compliance
IL3101360 CARLSON SPGS STABLES 5253	<b>Coliform MCL</b>	Returned to Compliance
IL3117895 CAT TECH CENTER	<b>Coliform MCL</b>	Returned to Compliance
IL1670300 CHATHAM	<b>Coliform MCL</b>	Returned to Compliance
IL1430200 CHILLICOTHE	<b>Coliform MCL</b>	Returned to Compliance

# ***Appendix B***

## *Illinois EPA 2005 Annual Compliance*

### *Maximum Contaminant Level and Treatment Technique Violations*

#### ***Listing by Contaminant***

<u><i>Facility Number and Name</i></u>	<u><i>Contaminant</i></u>	<u><i>Comments</i></u>
IL1910050 CISNE	<b>Coliform MCL</b>	Returned to Compliance
IL0250050 CLAY CITY	<b>Coliform MCL</b>	Returned to Compliance
IL1090200 COLCHESTER	<b>Coliform MCL</b>	Returned to Compliance
IL3138594 CONDITS RANCH EAST WELL	<b>Coliform MCL</b>	Enforcement in process
IL1975480 CRYSTAL LAWNS SUBDIVISION	<b>Coliform MCL</b>	Returned to Compliance
IL3109876 CUSTERS KEG	<b>Coliform MCL</b>	Returned to Compliance
IL3110932 DOUBLE TREE HILLS	<b>Coliform MCL</b>	Enforcement in process
IL0670010 ELVASTON	<b>Coliform MCL</b>	Returned to Compliance
IL3016477 ESPENSCHIED MEMORIAL PARK	<b>Coliform MCL</b>	Returned to Compliance
IL3135293 FIRST CHURCH OF THE NAZARENE (135293)	<b>Coliform MCL</b>	Returned to Compliance
IL3136945 FREEDOM OIL COMPANY (136945)	<b>Coliform MCL</b>	Enforcement in process
IL1430350 GLASFORD	<b>Coliform MCL</b>	Returned to Compliance
IL3024596 GOLD HILLS GOLF COURSE	<b>Coliform MCL</b>	Returned to Compliance
IL0670400 HAMILTON	<b>Coliform MCL</b>	Returned to Compliance
IL3138941 HARDYS REINDEER RANCH	<b>Coliform MCL</b>	Returned to Compliance
IL0970450 HAWTHORN WOODS	<b>Coliform MCL</b>	Returned to Compliance
IL0950250 HENDERSON	<b>Coliform MCL</b>	Returned to Compliance
IL1795495 HIATTS HIDEAWAY MHP	<b>Coliform MCL</b>	Returned to Compliance
IL3052563 I&I STEAK HOUSE	<b>Coliform MCL</b>	Returned to Compliance
IL3141671 INDIAN HILLS FOREST PRESERVE	<b>Coliform MCL</b>	Enforcement in process
IL3049296 ISLAND MARINA	<b>Coliform MCL</b>	Returned to Compliance
IL0830250 JERSEYVILLE	<b>Coliform MCL</b>	Returned to Compliance
IL3097444 JOHN&NAOMIS CORNER TAP	<b>Coliform MCL</b>	Returned to Compliance
IL3116095 JUBILEE CAFE	<b>Coliform MCL</b>	Returned to Compliance

# *Appendix B*

## *Illinois EPA 2005 Annual Compliance*

### *Maximum Contaminant Level and Treatment Technique Violations*

#### *Listing by Contaminant*

<u>Facility Number and Name</u>	<u>Contaminant</u>	<u>Comments</u>
IL3004309 KILBUCK CREEK F P EDGEWOOD	<b>Coliform MCL</b>	Returned to Compliance
IL3004283 KILBUCK CREEK FP UPPER ENT	<b>Coliform MCL</b>	Returned to Compliance
IL3126532 KOUNTRY KORNER (126532)	<b>Coliform MCL</b>	Returned to Compliance
IL1110400 LAKE IN THE HILLS	<b>Coliform MCL</b>	Returned to Compliance
IL3085902 LOUD THUNDER FOREST PRESERVE B	<b>Coliform MCL</b>	Enforcement in process
IL3131177 MALIBU BAY LOUNGE	<b>Coliform MCL</b>	Enforcement in process
IL1470300 MANSFIELD	<b>Coliform MCL</b>	Returned to Compliance
IL0910600 MANTENO	<b>Coliform MCL</b>	Returned to Compliance
IL0311770 MARKHAM	<b>Coliform MCL</b>	Returned to Compliance
IL3006940 MARSHALL CO SPORTSMENS CLUB (6940)	<b>Coliform MCL</b>	Enforcement in process
IL3006940 MARSHALL CO SPORTSMENS CLUB (6940)	<b>Coliform MCL</b>	Returned to Compliance
IL1630800 MASCOUTAH	<b>Coliform MCL</b>	Returned to Compliance
IL0490300 MASON	<b>Coliform MCL</b>	Returned to Compliance
IL0311800 MATTESON	<b>Coliform MCL</b>	Returned to Compliance
IL3032979 MCDUCKS	<b>Coliform MCL</b>	Enforcement in process
IL3003483 MCMILLENS CAMP-A-WHILE	<b>Coliform MCL</b>	Returned to Compliance
IL0970110 MDWS AT LKMR SULLIVAN LAKE SUBDIVISION	<b>Coliform MCL</b>	Returned to Compliance
IL3110957 MESSIAH LUTHERAN CHURCH (110957)	<b>Coliform MCL</b>	Enforcement in process
IL1350020 MONTGOMERY COUNTY WATER COMPANY	<b>Coliform MCL</b>	Returned to Compliance
IL3123182 MOON GLO	<b>Coliform MCL</b>	Returned to Compliance
IL1790500 MORTON	<b>Coliform MCL</b>	Returned to Compliance
IL0090100 MOUNT STERLING	<b>Coliform MCL</b>	Returned to Compliance

# *Appendix B*

## *Illinois EPA 2005 Annual Compliance*

### *Maximum Contaminant Level and Treatment Technique Violations*

#### *Listing by Contaminant*

<u>Facility Number and Name</u>	<u>Contaminant</u>	<u>Comments</u>
IL3094672 MURPHYS PARKSIDE CAMPGROUND	<b>Coliform MCL</b>	Returned to Compliance
IL3010215 NEW CASTLE BIBLE CHURCH	<b>Coliform MCL</b>	Enforcement in process
IL3005595 NEWTOWN MIDDLE SCHOOL	<b>Coliform MCL</b>	Returned to Compliance
IL1530250 OLMSTED	<b>Coliform MCL</b>	Returned to Compliance
IL3096453 PACIFIC BEARING	<b>Coliform MCL</b>	Returned to Compliance
IL1970750 PEOTONE	<b>Coliform MCL</b>	Returned to Compliance
IL3141739 PORTER PARK	<b>Coliform MCL</b>	Returned to Compliance
IL3046318 PRICE BROTHERS COMPANY	<b>Coliform MCL</b>	Enforcement in process
IL3134817 RAYS RANCH HOUSE (134817)	<b>Coliform MCL</b>	Returned to Compliance
IL3113985 RIVERDALE SCHOOL DISTRICT #100	<b>Coliform MCL</b>	Returned to Compliance
IL3132860 SALVATION ARMY EAGLE CREST	<b>Coliform MCL</b>	Returned to Compliance
IL3095174 SHAMROCK GOLF COURSE HAND PUMP	<b>Coliform MCL</b>	Enforcement in process
IL3090290 SHERRARD SENIOR HIGH SCHOOL	<b>Coliform MCL</b>	Returned to Compliance
IL1615750 SILVIS HEIGHTS WATER CORP	<b>Coliform MCL</b>	Returned to Compliance
IL0950500 ST AUGUSTINE	<b>Coliform MCL</b>	Returned to Compliance
IL3024737 STONE CITY VFW	<b>Coliform MCL</b>	Enforcement in process
IL0975280 SUMMIT HOMEOWNERS ASSOCIATION	<b>Coliform MCL</b>	Returned to Compliance
IL1190120 SUNNY SHORES MHP	<b>Coliform MCL</b>	Returned to Compliance
IL1315200 SWEDONA WATER ASSOCIATION	<b>Coliform MCL</b>	Returned to Compliance
IL0971210 TERRACE OAK APARTMENTS	<b>Coliform MCL</b>	Returned to Compliance
IL3019992 THE BACK 40 INC	<b>Coliform MCL</b>	Returned to Compliance
IL3097378 THE OLD MILL	<b>Coliform MCL</b>	Returned to Compliance

# Appendix B

## Illinois EPA 2005 Annual Compliance

### Maximum Contaminant Level and Treatment Technique Violations

#### Listing by Contaminant

<u>Facility Number and Name</u>	<u>Contaminant</u>	<u>Comments</u>
IL3126508 THE OLD SHAMROCK	<b>Coliform MCL</b>	Enforcement in process
IL3005777 VICTORY BAPTIST CHURCH	<b>Coliform MCL</b>	Enforcement in process
IL3060285 WALNUT GR UNITED METHODIST CHU	<b>Coliform MCL</b>	Enforcement in process
IL1977210 AQUA ILLINOIS-OAKVIEW	<b>Combined Radium MCL</b>	Purchase Water
IL1035100 AQUA ILLINOIS-WOODHAVEN	<b>Combined Radium MCL</b>	Compliance commitment agreement / schedule approved
IL0314120 BARTLETT	<b>Combined Radium MCL</b>	Compliance commitment agreement / schedule approved
IL0894130 BATAVIA	<b>Combined Radium MCL</b>	Compliance commitment agreement / schedule approved
IL0710050 BIGGSVILLE	<b>Combined Radium MCL</b>	Enforcement in process
IL0895125 BREAZEALE MHP	<b>Combined Radium MCL</b>	Enforcement in process
IL0971060 BRIARCREST SBDV HOMEOWNERS ASSOCIATION	<b>Combined Radium MCL</b>	Returned to Compliance
IL0895149 BROADVIEW ACADEMY	<b>Combined Radium MCL</b>	Returned to Compliance
IL0570200 BRYANT	<b>Combined Radium MCL</b>	Enforcement in process
IL0110150 BUREAU JUNCTION	<b>Combined Radium MCL</b>	Compliance commitment agreement / schedule approved
IL1970200 CHANNAHON	<b>Combined Radium MCL</b>	Returned to Compliance
IL1970070 CHANNAHON EAST	<b>Combined Radium MCL</b>	Purchase Water
IL1090200 COLCHESTER	<b>Combined Radium MCL</b>	Returned to Compliance
IL0370051 CORTLAND	<b>Combined Radium MCL</b>	Compliance commitment agreement / schedule approved
IL0375125 CORTLAND CORNERS MHP	<b>Combined Radium MCL</b>	Returned to Compliance
IL0975250 COUNTRYSIDE MANOR SUBDIVISION	<b>Combined Radium MCL</b>	Returned to Compliance
IL0110300 DE PUE	<b>Combined Radium MCL</b>	Returned to Compliance
IL1030200 DIXON	<b>Combined Radium MCL</b>	Compliance commitment agreement / schedule approved
IL1435150 EDELSTEIN WATER COOP	<b>Combined Radium MCL</b>	Enforcement in process

# Appendix B

## Illinois EPA 2005 Annual Compliance

### Maximum Contaminant Level and Treatment Technique Violations

#### Listing by Contaminant

<u>Facility Number and Name</u>	<u>Contaminant</u>	<u>Comments</u>
IL0890300 ELBURN	<b>Combined Radium MCL</b>	Compliance commitment agreement / schedule approved
IL0975736 ELM OAK MUTUAL WATER SYSTEM	<b>Combined Radium MCL</b>	Compliance commitment agreement / schedule approved
IL0570500 FARMINGTON	<b>Combined Radium MCL</b>	Compliance commitment agreement / schedule approved
IL0995110 FOUR LAKES SUBDIVISION	<b>Combined Radium MCL</b>	Enforcement in process
IL0890350 GENEVA	<b>Combined Radium MCL</b>	Compliance commitment agreement / schedule approved
IL1430350 GLASFORD	<b>Combined Radium MCL</b>	Compliance commitment agreement / schedule approved
IL0975600 GRANDWOOD PARK SUBDIVISION	<b>Combined Radium MCL</b>	Returned to Compliance
IL1550050 GRANVILLE	<b>Combined Radium MCL</b>	Returned to Compliance
IL0890450 HAMPSHIRE	<b>Combined Radium MCL</b>	Compliance commitment agreement / schedule approved
IL1030300 HARMON	<b>Combined Radium MCL</b>	Compliance commitment agreement / schedule approved
IL0975238 HEIDEN GARDENS CONDOS	<b>Combined Radium MCL</b>	Returned to Compliance
IL1970210 HIDDEN VALLEY CREEK APARTMENTS	<b>Combined Radium MCL</b>	Returned to Compliance
IL1235150 HOPEWELL	<b>Combined Radium MCL</b>	Returned to Compliance
IL0995300 IL PRAIRIE ESTATES SUBDIVISION	<b>Combined Radium MCL</b>	Compliance commitment agreement / schedule approved
IL1970450 JOLIET	<b>Combined Radium MCL</b>	Compliance commitment agreement / schedule approved
IL1977930 JOLIET CORRECTIONAL CENTER	<b>Combined Radium MCL</b>	Returned to Compliance
IL1977940 KANKAKEE CORRECTIONAL CENTER	<b>Combined Radium MCL</b>	Returned to Compliance
IL0730650 KEWANEE	<b>Combined Radium MCL</b>	Returned to Compliance
IL1430450 KINGSTON MINES	<b>Combined Radium MCL</b>	Enforcement in process



# Appendix B

## Illinois EPA 2005 Annual Compliance

### Maximum Contaminant Level and Treatment Technique Violations

#### Listing by Contaminant

<u>Facility Number and Name</u>	<u>Contaminant</u>	<u>Comments</u>
IL0630450 KINSMAN	<b>Combined Radium MCL</b>	Compliance commitment agreement / schedule approved
IL1870050 KIRKWOOD	<b>Combined Radium MCL</b>	Returned to Compliance
IL0970850 LAKE ZURICH	<b>Combined Radium MCL</b>	Compliance commitment agreement / schedule approved
IL1955150 LAKEVIEW HILLS WATER SUPPLY COMPANY	<b>Combined Radium MCL</b>	Returned to Compliance
IL1870100 LITTLE YORK	<b>Combined Radium MCL</b>	Compliance commitment agreement / schedule approved
IL2010150 LOVES PARK	<b>Combined Radium MCL</b>	Returned to Compliance
IL0995336 LYNNWOOD WATER CORPORATION	<b>Combined Radium MCL</b>	Enforcement in process
IL1970550 MANHATTAN	<b>Combined Radium MCL</b>	Compliance commitment agreement / schedule approved
IL0990500 MARSEILLES	<b>Combined Radium MCL</b>	Returned to Compliance
IL0990110 MARSEILLES SOUTH	<b>Combined Radium MCL</b>	Returned to Compliance
IL0990550 MENDOTA	<b>Combined Radium MCL</b>	Returned to Compliance
IL1870150 MONMOUTH	<b>Combined Radium MCL</b>	Returned to Compliance
IL0895319 MOOSEHEART	<b>Combined Radium MCL</b>	Returned to Compliance
IL0935140 MORGAN CREEK	<b>Combined Radium MCL</b>	Returned to Compliance
IL0150200 MOUNT CARROLL	<b>Combined Radium MCL</b>	Returned to Compliance
IL1410350 MOUNT MORRIS	<b>Combined Radium MCL</b>	Enforcement in process
IL0990600 NAPLATE	<b>Combined Radium MCL</b>	Enforcement in process
IL0110700 NEPONSET	<b>Combined Radium MCL</b>	Enforcement in process
IL0890600 NORTH AURORA	<b>Combined Radium MCL</b>	Compliance commitment agreement / schedule approved
IL1550010 OAK PARK ESTATES	<b>Combined Radium MCL</b>	Returned to Compliance
IL0930150 OSWEGO	<b>Combined Radium MCL</b>	Compliance commitment agreement / schedule approved
IL1570350 PERCY	<b>Combined Radium MCL</b>	Returned to Compliance

# Appendix B

## Illinois EPA 2005 Annual Compliance

### Maximum Contaminant Level and Treatment Technique Violations

#### Listing by Contaminant

<u>Facility Number and Name</u>	<u>Contaminant</u>	<u>Comments</u>
IL0630060 PRAIRIE OAKS ESTS HOMEOWNERS ASSN	<b>Combined Radium MCL</b>	Enforcement in process
IL0970320 PROMONTORY POINTE HOMEOWNERS ASSOCIATION	<b>Combined Radium MCL</b>	Returned to Compliance
IL0971100 PROVIDENCE AT PAINTED LAKES	<b>Combined Radium MCL</b>	Returned to Compliance
IL0990900 RANSOM	<b>Combined Radium MCL</b>	Enforcement in process
IL0914780 REDDICK	<b>Combined Radium MCL</b>	Enforcement in process
IL1970850 ROCKDALE	<b>Combined Radium MCL</b>	Compliance commitment agreement / schedule approved
IL2010300 ROCKFORD	<b>Combined Radium MCL</b>	Compliance commitment agreement / schedule approved
IL1970900 ROMEOVILLE	<b>Combined Radium MCL</b>	Returned to Compliance
IL0991050 SENECA	<b>Combined Radium MCL</b>	Returned to Compliance
IL0890040 SILVER GLEN ESTS	<b>Combined Radium MCL</b>	Compliance commitment agreement / schedule approved
IL0630650 SOUTH WILMINGTON	<b>Combined Radium MCL</b>	Returned to Compliance
IL0111000 SPRING VALLEY	<b>Combined Radium MCL</b>	Returned to Compliance
IL1190950 ST JACOB	<b>Combined Radium MCL</b>	Returned to Compliance
IL1550300 STANDARD	<b>Combined Radium MCL</b>	Compliance commitment agreement / schedule approved
IL0310080 SUNSET MHP	<b>Combined Radium MCL</b>	Compliance commitment agreement / schedule approved
IL0370550 SYCAMORE	<b>Combined Radium MCL</b>	Compliance commitment agreement / schedule approved
IL0970310 THE PRESERVE AT LONG GROVE	<b>Combined Radium MCL</b>	Returned to Compliance
IL1775255 TIMBER RIDGE MOBILE ESTATES	<b>Combined Radium MCL</b>	Compliance commitment agreement / schedule approved
IL0317765 TOUHY MHP	<b>Combined Radium MCL</b>	Returned to Compliance
IL1110900 UNION	<b>Combined Radium MCL</b>	Returned to Compliance

# Appendix B

## Illinois EPA 2005 Annual Compliance

### Maximum Contaminant Level and Treatment Technique Violations

#### Listing by Contaminant

<u>Facility Number and Name</u>	<u>Contaminant</u>	<u>Comments</u>
IL2015160 UTL INC-COVENTRY CREEK SUBDIVISION	<b>Combined Radium MCL</b>	Compliance commitment agreement / schedule approved
IL1310450 VIOLA	<b>Combined Radium MCL</b>	Returned to Compliance
IL0971770 VOLO	<b>Combined Radium MCL</b>	Returned to Compliance
IL0890110 WASCO SD	<b>Combined Radium MCL</b>	Returned to Compliance
IL0430900 WEST CHICAGO	<b>Combined Radium MCL</b>	Returned to Compliance
IL0990060 WHISPERING PINES MHP	<b>Combined Radium MCL</b>	Compliance commitment agreement / schedule approved
IL0995425 WILDLIFE MHP	<b>Combined Radium MCL</b>	Enforcement in process
IL0990030 WOODSMOKE RANCH ASSOCIATION	<b>Combined Radium MCL</b>	Returned to Compliance
IL0970080 WYNSTONE WATER COMPANY	<b>Combined Radium MCL</b>	Compliance commitment agreement / schedule approved
IL0930250 YORKVILLE	<b>Combined Radium MCL</b>	Compliance commitment agreement / schedule approved
IL1115100 CRYSTAL HEIGHTS ASSOCIATION	<b>Failure to install OCCT</b>	Returned to Compliance
IL1570250 EVANSVILLE	<b>Failure to Profile TT</b>	Compliance commitment agreement / schedule approved
IL0910600 MANTENO	<b>Fecal Coliform MCL</b>	Returned to Compliance
IL1977210 AQUA ILLINOIS-OAKVIEW	<b>Gross Alpha MCL</b>	Purchase Water
IL0894130 BATAVIA	<b>Gross Alpha MCL</b>	Returned to Compliance
IL0710050 BIGGSVILLE	<b>Gross Alpha MCL</b>	Enforcement in process
IL0570200 BRYANT	<b>Gross Alpha MCL</b>	Returned to Compliance
IL1970070 CHANNAHON EAST	<b>Gross Alpha MCL</b>	Purchase Water
IL1090200 COLCHESTER	<b>Gross Alpha MCL</b>	Returned to Compliance
IL0110300 DE PUE	<b>Gross Alpha MCL</b>	Returned to Compliance
IL1030200 DIXON	<b>Gross Alpha MCL</b>	Compliance commitment agreement / schedule approved
IL1435150 EDELSTEIN WATER COOP	<b>Gross Alpha MCL</b>	Returned to Compliance

# *Appendix B*

## *Illinois EPA 2005 Annual Compliance*

### *Maximum Contaminant Level and Treatment Technique Violations*

#### *Listing by Contaminant*

<u>Facility Number and Name</u>	<u>Contaminant</u>	<u>Comments</u>
IL0890300 ELBURN	<b>Gross Alpha MCL</b>	Returned to Compliance
IL1430350 GLASFORD	<b>Gross Alpha MCL</b>	Compliance commitment agreement / schedule approved
IL1550050 GRANVILLE	<b>Gross Alpha MCL</b>	Returned to Compliance
IL1030300 HARMON	<b>Gross Alpha MCL</b>	Compliance commitment agreement / schedule approved
IL1235150 HOPEWELL	<b>Gross Alpha MCL</b>	Returned to Compliance
IL0995300 IL PRAIRIE ESTATES SUBDIVISION	<b>Gross Alpha MCL</b>	Compliance commitment agreement / schedule approved
IL1970450 JOLIET	<b>Gross Alpha MCL</b>	Compliance commitment agreement / schedule approved
IL0730650 KEWANEE	<b>Gross Alpha MCL</b>	Returned to Compliance
IL1430450 KINGSTON MINES	<b>Gross Alpha MCL</b>	Enforcement in process
IL1870100 LITTLE YORK	<b>Gross Alpha MCL</b>	Compliance commitment agreement / schedule approved
IL1870150 MONMOUTH	<b>Gross Alpha MCL</b>	Returned to Compliance
IL0110700 NEPONSET	<b>Gross Alpha MCL</b>	Returned to Compliance
IL0890600 NORTH AURORA	<b>Gross Alpha MCL</b>	Returned to Compliance
IL1550010 OAK PARK ESTATES	<b>Gross Alpha MCL</b>	Returned to Compliance
IL0930150 OSWEGO	<b>Gross Alpha MCL</b>	Returned to Compliance
IL0630060 PRAIRIE OAKS ESTS HOMEOWNERS ASSN	<b>Gross Alpha MCL</b>	Returned to Compliance
IL0970320 PROMONTORY POINTE HOMEOWNERS ASSOCIATION	<b>Gross Alpha MCL</b>	Returned to Compliance
IL2010300 ROCKFORD	<b>Gross Alpha MCL</b>	Compliance commitment agreement / schedule approved
IL1550300 STANDARD	<b>Gross Alpha MCL</b>	Returned to Compliance
IL0317765 TOUHY MHP	<b>Gross Alpha MCL</b>	Returned to Compliance
IL1310450 VIOLA	<b>Gross Alpha MCL</b>	Returned to Compliance
IL0430900 WEST CHICAGO	<b>Gross Alpha MCL</b>	Returned to Compliance

# Appendix B

## Illinois EPA 2005 Annual Compliance

### Maximum Contaminant Level and Treatment Technique Violations

#### Listing by Contaminant

<u>Facility Number and Name</u>	<u>Contaminant</u>	<u>Comments</u>
IL0990060 WHISPERING PINES MHP	<b>Gross Alpha MCL</b>	Returned to Compliance
IL0990030 WOODSMOKE RANCH ASSOCIATION	<b>Gross Alpha MCL</b>	Returned to Compliance
IL0930250 YORKVILLE	<b>Gross Alpha MCL</b>	Compliance commitment agreement / schedule approved
IL1170150 CARLINVILLE	<b>Inadequate DBP Precursor Removal TT</b>	Returned to Compliance
IL1210300 KINMUNDY	<b>Inadequate DBP Precursor Removal TT</b>	Returned to Compliance
IL1175150 PALMYRA-MODESTO WATER COMMISSION	<b>Inadequate DBP Precursor Removal TT</b>	Compliance commitment agreement / schedule approved
IL0210500 PANA	<b>Inadequate DBP Precursor Removal TT</b>	Returned to Compliance
IL1210400 PATOKA	<b>Inadequate DBP Precursor Removal TT</b>	Returned to Compliance
IL1171050 STAUNTON	<b>Inadequate DBP Precursor Removal TT</b>	Returned to Compliance
IL0875510 VIENNA CORRECTIONAL CENTER	<b>Inadequate DBP Precursor Removal TT</b>	Returned to Compliance
IL1171050 STAUNTON	<b>Insufficient Inactivation TT</b>	Returned to Compliance
IL3049031 3M CORDOVA PLANT	<b>Lead Public Education TT</b>	Enforcement in Process
IL0015150 ADAMS COUNTY WATER DISTRICT NO.1	<b>Lead Public Education TT</b>	Returned to Compliance
IL1070050 ATLANTA	<b>Lead Public Education TT</b>	Enforcement in Process
IL3033050 BAXTER HEALTH CARE/HANLINE	<b>Lead Public Education TT</b>	Enforcement in Process
IL3083758 BERNARD DIVISION	<b>Lead Public Education TT</b>	Enforcement in Process
IL3048801 BLACK HAWK SCHOOL SKIP PROGRAM	<b>Lead Public Education TT</b>	Enforcement in Process
IL1990200 COLP	<b>Lead Public Education TT</b>	Enforcement in Process
IL3040402 COM-ED GLENBARD AREA HEADQRTRS	<b>Lead Public Education TT</b>	Enforcement in Process
IL1170300 EAGERVILLE	<b>Lead Public Education TT</b>	Returned to Compliance

# Appendix B

## Illinois EPA 2005 Annual Compliance

### Maximum Contaminant Level and Treatment Technique Violations

#### Listing by Contaminant

<u>Facility Number and Name</u>	<u>Contaminant</u>	<u>Comments</u>
IL3103028 EXELON NUCLEAR TRAINING CENTER	Lead Public Education TT	Enforcement in Process
IL3130302 GOOD SHEPHERD HOSPITAL	Lead Public Education TT	Enforcement in Process
IL1410250 HILLCREST	Lead Public Education TT	Returned to Compliance
IL3091785 IPSEN INTERNATIONAL	Lead Public Education TT	Enforcement in Process
IL3126581 LAKE CO F P OFFICE HDQTRS #21	Lead Public Education TT	Enforcement in Process
IL3076984 MIDLAND HIGH SCHOOL	Lead Public Education TT	Enforcement in Process
IL1035269 NACHUSA LUTHERAN HOME	Lead Public Education TT	Returned to Compliance
IL3117903 OFFICE CENTER	Lead Public Education TT	Enforcement in Process
IL3074831 PEOPLES GAS-MANLOVE FIELD	Lead Public Education TT	Enforcement in Process
IL0010600 PLAINVILLE	Lead Public Education TT	Returned to Compliance
IL3086751 ROCKLAND OFFICE PLAZA	Lead Public Education TT	Enforcement in Process
IL3047530 STATELINE FOUNDRIES	Lead Public Education TT	Enforcement in Process
IL3117283 TERRACE OAKS TWO	Lead Public Education TT	Enforcement in Process
IL3131060 TOP DIE CASTING CO	Lead Public Education TT	Enforcement in Process
IL0971170 UNIVERSITY ST MARY OF THE LAKE	Lead Public Education TT	Returned to Compliance
IL3042234 WILL COUNTY DEPT OF HIGHWAYS	Lead Public Education TT	Enforcement in Process
IL0111150 WYANET	Lead Public Education TT	Returned to Compliance
IL1570050 BALDWIN	Monthly Combined Filter Effluent TT	Purchase Water
IL0270300 CARLYLE	Monthly Combined Filter Effluent TT	Returned to Compliance
IL1575600 EDEN PWD	Monthly Combined Filter Effluent TT	Purchase Water
IL1570010 EGYPTIAN WATER COMPANY	Monthly Combined Filter Effluent TT	Purchase Water

# Appendix B

## Illinois EPA 2005 Annual Compliance

### Maximum Contaminant Level and Treatment Technique Violations

#### Listing by Contaminant

<u>Facility Number and Name</u>	<u>Contaminant</u>	<u>Comments</u>
IL3003848 FREEMAN UNITED COAL CO CROWN 2	<b>Monthly Combined Filter Effluent TT</b>	Returned to Compliance
IL3127456 FREEMAN UNITED COAL-CROWN 111	<b>Monthly Combined Filter Effluent TT</b>	Returned to Compliance
IL0910020 LAKE SHANNON	<b>Monthly Combined Filter Effluent TT</b>	Returned to Compliance
IL1570600 SPARTA	<b>Monthly Combined Filter Effluent TT</b>	Compliance commitment agreement / schedule approved
IL1010100 BRIDGEPORT	<b>Nitrate MCL</b>	Returned to Compliance
IL3033977 CHECKERS	<b>Nitrate MCL</b>	Enforcement in process
IL3076471 DYNEGY MIDWEST GENERATION	<b>Nitrate MCL</b>	Returned to Compliance
IL3043018 GUDATS	<b>Nitrate MCL</b>	Enforcement in process
IL3043034 HIALEAH CLUB	<b>Nitrate MCL</b>	Enforcement in process
IL1010150 LAWRENCEVILLE	<b>Nitrate MCL</b>	Returned to Compliance
IL1010150 LAWRENCEVILLE	<b>Nitrate MCL</b>	Returned to Compliance
IL0010400 LIMA	<b>Nitrate MCL</b>	Returned to Compliance
IL3004952 LONGBRANCH SALOON	<b>Nitrate MCL</b>	Enforcement in process
IL3136614 MISS NETTIES DOUBLE J	<b>Nitrate MCL</b>	Enforcement in process
IL1015350 PETROLIA PWD	<b>Nitrate MCL</b>	Returned to Compliance
IL3034074 SQUIRREL PIT	<b>Nitrate MCL</b>	Enforcement in process
IL1010300 SUMNER	<b>Nitrate MCL</b>	Returned to Compliance
IL1470250 HAMMOND	<b>Nitrite MCL</b>	Returned to Compliance
IL0230150 MARTINSVILLE	<b>Nitrite MCL</b>	Returned to Compliance
IL1210400 PATOKA	<b>Simazine MCL</b>	Compliance commitment agreement / schedule approved
IL3127456 FREEMAN UNITED COAL-CROWN 111	<b>Single Combined Filter Effluent TT</b>	Returned to Compliance
IL1815150 ALTO PASS WATER DISTRICT	<b>Total Haloacetic Acids MCL</b>	Returned to Compliance

# Appendix B

## Illinois EPA 2005 Annual Compliance

### Maximum Contaminant Level and Treatment Technique Violations

#### Listing by Contaminant

<u>Facility Number and Name</u>	<u>Contaminant</u>	<u>Comments</u>
IL1170040 CENTRAL MACOUPIN COUNTY RWD	<b>Total Haloacetic Acids MCL</b>	Returned to Compliance
IL1130400 COOKSVILLE	<b>Total Haloacetic Acids MCL</b>	Compliance commitment agreement / schedule approved
IL0250010 IOLA	<b>Total Haloacetic Acids MCL</b>	Returned to Compliance
IL3064824 MC HENRY CO COLLEGE/S SELCKE	<b>Total Haloacetic Acids MCL</b>	Returned to Compliance
IL1830600 OAKWOOD	<b>Total Haloacetic Acids MCL</b>	Returned to Compliance
IL1210400 PATOKA	<b>Total Haloacetic Acids MCL</b>	Compliance commitment agreement / schedule approved
IL3005413 ROOKS CREEK ELEMENTARY SCHOOL	<b>Total Haloacetic Acids MCL</b>	Returned to Compliance
IL1815150 ALTO PASS WATER DISTRICT	<b>Total Trihalomethane MCL</b>	Returned to Compliance
IL3113423 CATERPILLAR INC/UTIL ENG SUPT	<b>Total Trihalomethane MCL</b>	Returned to Compliance
IL1170040 CENTRAL MACOUPIN COUNTY RWD	<b>Total Trihalomethane MCL</b>	Compliance commitment agreement / schedule approved
IL1170040 CENTRAL MACOUPIN COUNTY RWD	<b>Total Trihalomethane MCL</b>	Returned to Compliance
IL1130400 COOKSVILLE	<b>Total Trihalomethane MCL</b>	Compliance commitment agreement / schedule approved
IL0054360 DONNELSON	<b>Total Trihalomethane MCL</b>	Compliance commitment agreement / schedule approved
IL0250010 IOLA	<b>Total Trihalomethane MCL</b>	Compliance commitment agreement / schedule approved
IL3064824 MC HENRY CO COLLEGE/S SELCKE	<b>Total Trihalomethane MCL</b>	Returned to Compliance
IL0210500 PANA	<b>Total Trihalomethane MCL</b>	Returned to Compliance
IL0054720 PANAMA	<b>Total Trihalomethane MCL</b>	Compliance commitment agreement / schedule approved
IL3005413 ROOKS CREEK ELEMENTARY SCHOOL	<b>Total Trihalomethane MCL</b>	Returned to Compliance
IL0050250 SMITHBORO	<b>Total Trihalomethane MCL</b>	Returned to Compliance



# *Appendix B*

## *Illinois EPA 2005 Annual Compliance*

### *Maximum Contaminant Level and Treatment Technique Violations*

#### *Listing by Contaminant*

<u>Facility Number and Name</u>	<u>Contaminant</u>	<u>Comments</u>
IL1171050 STAUNTON	<b>Total Trihalomethane MCL</b>	Returned to Compliance
IL1190080 TRITOWNSHIP WATER DISTRICT	<b>Total Trihalomethane MCL</b>	Returned to Compliance
IL0410350 VILLA GROVE	<b>Total Trihalomethane MCL</b>	Returned to Compliance
IL0670650 WARSAW	<b>Total Trihalomethane MCL</b>	Returned to Compliance
IL1910010 WESTERN WAYNE WATER DISTRICT	<b>Total Trihalomethane MCL</b>	Returned to Compliance
IL3138776 MATHEWS COMPANY	<b>Trichloroethylene MCL</b>	Enforcement in process
IL0490050 ALTAMONT	<b>Turbidity &gt; 1NTU CFE TT</b>	Returned to Compliance
IL0315310 GLENBROOK SD	<b>Turbidity &gt; 1NTU CFE TT</b>	Returned to Compliance
IL0970500 HIGHLAND PARK	<b>Turbidity &gt; 1NTU CFE TT</b>	Returned to Compliance
IL0971250 NORTH CHICAGO	<b>Turbidity &gt; 1NTU CFE TT</b>	Returned to Compliance
IL1615170 CEDAR BROOK ESTATES SUBDIVISION	<b>Water Quality Parameter (Lead/Copper) TT</b>	Returned to Compliance
IL1115250 EASTWOOD MANOR WATER COMPANY	<b>Water Quality Parameter (Lead/Copper) TT</b>	Monitoring ongoing
IL0850020 LONGHOLLOW POINT	<b>Water Quality Parameter (Lead/Copper) TT</b>	Returned to Compliance
IL0450400 VERMILION	<b>Water Quality Parameter (Lead/Copper) TT</b>	Monitoring ongoing

## **Appendix C**

**The attached report identifies all public water supplies with maximum contaminant level and treatment technique violations in system name alpha order.**

# Appendix C

## Illinois EPA 2005 Annual Compliance

### Maximum Contaminant Level and Treatment Technique Violations

#### Listing by Water

<u>Facility Number and Name</u>	<u>Contaminant</u>	<u>Comments</u>
IL3049031 <b>3M CORDOVA PLANT</b>	Lead Public Education TT	Enforcement in Process
IL0015150 <b>ADAMS COUNTY WATER DISTRICT NO.1</b>	Lead Public Education TT	Returned to Compliance
IL0490050 <b>ALTAMONT</b>	Turbidity > 1NTU CFE TT	Returned to Compliance
IL1815150 <b>ALTO PASS WATER DISTRICT</b>	Total Haloacetic Acids MCL	Returned to Compliance
IL1815150 <b>ALTO PASS WATER DISTRICT</b>	Total Trihalomethane MCL	Returned to Compliance
IL3148106 <b>ALTO VINEYARD</b>	Coliform MCL	Returned to Compliance
IL1830050 <b>ALVAN</b>	Coliform MCL	Returned to Compliance
IL3113589 <b>AMEREN-CILCO-EASTERN SERVICE CENTER</b>	Coliform MCL	Returned to Compliance
IL0850050 <b>APPLE RIVER</b>	Coliform MCL	Returned to Compliance
IL1830500 <b>AQUA ILLINOIS-INDIANOLA</b>	Coliform MCL	Returned to Compliance
IL1977210 <b>AQUA ILLINOIS-OAKVIEW</b>	Combined Radium MCL	Purchase Water
IL1977210 <b>AQUA ILLINOIS-OAKVIEW</b>	Gross Alpha MCL	Purchase Water
IL1035100 <b>AQUA ILLINOIS-WOODHAVEN</b>	Combined Radium MCL	Compliance commitment agreement / schedule approved
IL3021824 <b>ARGYLE LAKE STATE PARK (21824)</b>	Coliform MCL	Enforcement in process
IL0730200 <b>ATKINSON</b>	Coliform MCL	Returned to Compliance
IL1070050 <b>ATLANTA</b>	Lead Public Education TT	Enforcement in Process
IL1570050 <b>BALDWIN</b>	Monthly Combined Filter Effluent TT	Purchase Water
IL1090050 <b>BARDOLPH</b>	Coliform MCL	Returned to Compliance
IL0314120 <b>BARTLETT</b>	Combined Radium MCL	Compliance commitment agreement / schedule approved
IL0894130 <b>BATAVIA</b>	Combined Radium MCL	Compliance commitment agreement / schedule approved
IL0894130 <b>BATAVIA</b>	Gross Alpha MCL	Returned to Compliance

# Appendix C

## Illinois EPA 2005 Annual Compliance

### Maximum Contaminant Level and Treatment Technique Violations

#### Listing by Water

<u>Facility Number and Name</u>	<u>Contaminant</u>	<u>Comments</u>
IL3033050 <b>BAXTER HEALTH CARE/HANLINE</b>	Lead Public Education TT	Enforcement in Process
IL3083758 <b>BERNARD DIVISION</b>	Lead Public Education TT	Enforcement in Process
IL3020636 <b>BERTS AT OAKHILL</b>	Coliform MCL	Enforcement in process
IL0710050 <b>BIGGSVILLE</b>	Combined Radium MCL	Enforcement in process
IL0710050 <b>BIGGSVILLE</b>	Gross Alpha MCL	Enforcement in process
IL1015300 <b>BIRDS PINKSTAFF WATER DISTRICT</b>	Coliform MCL	Returned to Compliance
IL3048801 <b>BLACK HAWK SCHOOL SKIP PROGRAM</b>	Lead Public Education TT	Enforcement in Process
IL0630050 <b>BRACEVILLE</b>	Coliform (Acute) MCL	Returned to Compliance
IL0630050 <b>BRACEVILLE</b>	Coliform MCL	Returned to Compliance
IL0895125 <b>BREAZEALE MHP</b>	Combined Radium MCL	Enforcement in process
IL0971060 <b>BRIARCREST SBDV HOMEOWNERS ASSOCIATION</b>	Combined Radium MCL	Returned to Compliance
IL1010100 <b>BRIDGEPORT</b>	Nitrate MCL	Returned to Compliance
IL0895149 <b>BROADVIEW ACADEMY</b>	Combined Radium MCL	Returned to Compliance
IL0570200 <b>BRYANT</b>	Coliform MCL	Returned to Compliance
IL0570200 <b>BRYANT</b>	Combined Radium MCL	Enforcement in process
IL0570200 <b>BRYANT</b>	Gross Alpha MCL	Returned to Compliance
IL0110150 <b>BUREAU JUNCTION</b>	Combined Radium MCL	Compliance commitment agreement / schedule approved
IL3102210 <b>BUSSE WOODS SOUTH 1231</b>	Coliform MCL	Enforcement in process
IL3048959 <b>BYRON HILLS GOLF COURSE</b>	Coliform MCL	Returned to Compliance
IL1170150 <b>CARLINVILLE</b>	Inadequate DBP Precursor Removal TT	Returned to Compliance

# Appendix C

## Illinois EPA 2005 Annual Compliance

### Maximum Contaminant Level and Treatment Technique Violations

#### Listing by Water

<u>Facility Number and Name</u>	<u>Contaminant</u>	<u>Comments</u>
IL3101360 <b>CARLSON SPGS STABLES 5253</b>	Coliform MCL	Returned to Compliance
IL0270300 <b>CARLYLE</b>	Monthly Combined Filter Effluent TT	Returned to Compliance
IL3117895 <b>CAT TECH CENTER</b>	Coliform MCL	Returned to Compliance
IL3113423 <b>CATERPILLAR INC/UTIL ENG SUPT</b>	Total Trihalomethane MCL	Returned to Compliance
IL1615170 <b>CEDAR BROOK ESTATES SUBDIVISION</b>	Water Quality Parameter (Lead/Copper) TT	Returned to Compliance
IL1170040 <b>CENTRAL MACOUPIN COUNTY RWD</b>	Total Haloacetic Acids MCL	Returned to Compliance
IL1170040 <b>CENTRAL MACOUPIN COUNTY RWD</b>	Total Trihalomethane MCL	Compliance commitment agreement / schedule approved
IL1170040 <b>CENTRAL MACOUPIN COUNTY RWD</b>	Total Trihalomethane MCL	Returned to Compliance
IL1970200 <b>CHANNAHON</b>	Combined Radium MCL	Returned to Compliance
IL1970070 <b>CHANNAHON EAST</b>	Combined Radium MCL	Purchase Water
IL1970070 <b>CHANNAHON EAST</b>	Gross Alpha MCL	Purchase Water
IL1670300 <b>CHATHAM</b>	Coliform MCL	Returned to Compliance
IL3033977 <b>CHECKERS</b>	Nitrate MCL	Enforcement in process
IL1430200 <b>CHILLICOTHE</b>	Coliform MCL	Returned to Compliance
IL1910050 <b>CISNE</b>	Coliform MCL	Returned to Compliance
IL0250050 <b>CLAY CITY</b>	Coliform MCL	Returned to Compliance
IL1090200 <b>COLCHESTER</b>	Coliform MCL	Returned to Compliance
IL1090200 <b>COLCHESTER</b>	Combined Radium MCL	Returned to Compliance
IL1090200 <b>COLCHESTER</b>	Gross Alpha MCL	Returned to Compliance
IL1990200 <b>COLP</b>	Lead Public Education TT	Enforcement in Process

# Appendix C

## Illinois EPA 2005 Annual Compliance

### Maximum Contaminant Level and Treatment Technique Violations

#### Listing by Water

<u>Facility Number and Name</u>	<u>Contaminant</u>	<u>Comments</u>
IL3040402 <b>COM-ED GLENBARD AREA HEADQRTS</b>	Lead Public Education TT	Enforcement in Process
IL3138594 <b>CONDITS RANCH EAST WELL</b>	Coliform MCL	Enforcement in process
IL1130400 <b>COOKSVILLE</b>	Total Haloacetic Acids MCL	Compliance commitment agreement / schedule approved
IL1130400 <b>COOKSVILLE</b>	Total Trihalomethane MCL	Compliance commitment agreement / schedule approved
IL0370051 <b>CORTLAND</b>	Combined Radium MCL	Compliance commitment agreement / schedule approved
IL0375125 <b>CORTLAND CORNERS MHP</b>	Combined Radium MCL	Returned to Compliance
IL0975250 <b>COUNTRYSIDE MANOR SUBDIVISION</b>	Combined Radium MCL	Returned to Compliance
IL1115100 <b>CRYSTAL HEIGHTS ASSOCIATION</b>	Failure to install OCCT	Returned to Compliance
IL1975480 <b>CRYSTAL LAWNS SUBDIVISION</b>	Coliform MCL	Returned to Compliance
IL3109876 <b>CUSTERS KEG</b>	Coliform MCL	Returned to Compliance
IL0110300 <b>DE PUE</b>	Combined Radium MCL	Returned to Compliance
IL0110300 <b>DE PUE</b>	Gross Alpha MCL	Returned to Compliance
IL1030200 <b>DIXON</b>	Combined Radium MCL	Compliance commitment agreement / schedule approved
IL1030200 <b>DIXON</b>	Gross Alpha MCL	Compliance commitment agreement / schedule approved
IL0054360 <b>DONNELSON</b>	Total Trihalomethane MCL	Compliance commitment agreement / schedule approved
IL3110932 <b>DOUBLE TREE HILLS</b>	Coliform MCL	Enforcement in process
IL3076471 <b>DYNEGY MIDWEST GENERATION</b>	Nitrate MCL	Returned to Compliance
IL1170300 <b>EAGERVILLE</b>	Lead Public Education TT	Returned to Compliance
IL1115250 <b>EASTWOOD MANOR WATER COMPANY</b>	Water Quality Parameter (Lead/Copper) TT	Monitoring ongoing

# Appendix C

## Illinois EPA 2005 Annual Compliance

### Maximum Contaminant Level and Treatment Technique Violations

#### Listing by Water

<u>Facility Number and Name</u>	<u>Contaminant</u>	<u>Comments</u>
IL1435150 <b>EDELSTEIN WATER COOP</b>	Combined Radium MCL	Enforcement in process
IL1435150 <b>EDELSTEIN WATER COOP</b>	Gross Alpha MCL	Returned to Compliance
IL1575600 <b>EDEN PWD</b>	Monthly Combined Filter Effluent TT	Purchase Water
IL1570010 <b>EGYPTIAN WATER COMPANY</b>	Monthly Combined Filter Effluent TT	Purchase Water
IL0890300 <b>ELBURN</b>	Combined Radium MCL	Compliance commitment agreement / schedule approved
IL0890300 <b>ELBURN</b>	Gross Alpha MCL	Returned to Compliance
IL0975736 <b>ELM OAK MUTUAL WATER SYSTEM</b>	Combined Radium MCL	Compliance commitment agreement / schedule approved
IL0670010 <b>ELVASTON</b>	Coliform MCL	Returned to Compliance
IL3016477 <b>ESPENSCHIED MEMORIAL PARK</b>	Coliform MCL	Returned to Compliance
IL1570250 <b>EVANSVILLE</b>	Failure to Profile TT	Compliance commitment agreement / schedule approved
IL3103028 <b>EXELON NUCLEAR TRAINING CENTER</b>	Lead Public Education TT	Enforcement in Process
IL3122804 <b>FAIRVIEW UNITED METHODIST CH</b>	Coliform (Acute) MCL	Enforcement in Process
IL0570500 <b>FARMINGTON</b>	Combined Radium MCL	Compliance commitment agreement / schedule approved
IL3135293 <b>FIRST CHURCH OF THE NAZARENE (135293)</b>	Coliform MCL	Returned to Compliance
IL0995110 <b>FOUR LAKES SUBDIVISION</b>	Combined Radium MCL	Enforcement in process
IL3136945 <b>FREEDOM OIL COMPANY (136945)</b>	Coliform MCL	Enforcement in process
IL3003848 <b>FREEMAN UNITED COAL CO CROWN 2</b>	Monthly Combined Filter Effluent TT	Returned to Compliance
IL3127456 <b>FREEMAN UNITED COAL-CROWN 111</b>	Monthly Combined Filter Effluent TT	Returned to Compliance

# Appendix C

## Illinois EPA 2005 Annual Compliance

### Maximum Contaminant Level and Treatment Technique Violations

#### Listing by Water

<u>Facility Number and Name</u>	<u>Contaminant</u>	<u>Comments</u>
IL3127456 <b>FREEMAN UNITED COAL-CROWN 111</b>	Single Combined Filter Effluent TT	Returned to Compliance
IL0890350 <b>GENEVA</b>	Combined Radium MCL	Compliance commitment agreement / schedule approved
IL1430350 <b>GLASFORD</b>	Coliform MCL	Returned to Compliance
IL1430350 <b>GLASFORD</b>	Combined Radium MCL	Compliance commitment agreement / schedule approved
IL1430350 <b>GLASFORD</b>	Gross Alpha MCL	Compliance commitment agreement / schedule approved
IL0315310 <b>GLENBROOK SD</b>	Turbidity > 1NTU CFE TT	Returned to Compliance
IL3024596 <b>GOLD HILLS GOLF COURSE</b>	Coliform MCL	Returned to Compliance
IL3130302 <b>GOOD SHEPHERD HOSPITAL</b>	Lead Public Education TT	Enforcement in Process
IL0975600 <b>GRANDWOOD PARK SUBDIVISION</b>	Combined Radium MCL	Returned to Compliance
IL1550050 <b>GRANVILLE</b>	Combined Radium MCL	Returned to Compliance
IL1550050 <b>GRANVILLE</b>	Gross Alpha MCL	Returned to Compliance
IL3043018 <b>GUDATS</b>	Nitrate MCL	Enforcement in process
IL0670400 <b>HAMILTON</b>	Coliform MCL	Returned to Compliance
IL1470250 <b>HAMMOND</b>	Nitrite MCL	Returned to Compliance
IL0890450 <b>HAMPSHIRE</b>	Combined Radium MCL	Compliance commitment agreement / schedule approved
IL3138941 <b>HARDYS REINDEER RANCH</b>	Coliform MCL	Returned to Compliance
IL1030300 <b>HARMON</b>	Combined Radium MCL	Compliance commitment agreement / schedule approved
IL1030300 <b>HARMON</b>	Gross Alpha MCL	Compliance commitment agreement / schedule approved
IL0970450 <b>HAWTHORN WOODS</b>	Coliform MCL	Returned to Compliance
IL0975238 <b>HEIDEN GARDENS CONDOS</b>	Combined Radium MCL	Returned to Compliance
IL0950250 <b>HENDERSON</b>	Coliform MCL	Returned to Compliance



# Appendix C

## Illinois EPA 2005 Annual Compliance

### Maximum Contaminant Level and Treatment Technique Violations

#### Listing by Water

<u>Facility Number and Name</u>	<u>Contaminant</u>	<u>Comments</u>
IL3043034 <b>HIALEAH CLUB</b>	Nitrate MCL	Enforcement in process
IL1795495 <b>HIATTS HIDEAWAY MHP</b>	Coliform MCL	Returned to Compliance
IL1970210 <b>HIDDEN VALLEY CREEK APARTMENTS</b>	Combined Radium MCL	Returned to Compliance
IL0970500 <b>HIGHLAND PARK</b>	Turbidity > 1NTU CFE TT	Returned to Compliance
IL1410250 <b>HILLCREST</b>	Lead Public Education TT	Returned to Compliance
IL3126565 <b>HIS REST BED &amp; BREAKFAST</b>	Coliform (Acute) MCL	Returned to Compliance
IL1235150 <b>HOPEWELL</b>	Combined Radium MCL	Returned to Compliance
IL1235150 <b>HOPEWELL</b>	Gross Alpha MCL	Returned to Compliance
IL3052563 <b>I&amp;I STEAK HOUSE</b>	Coliform MCL	Returned to Compliance
IL0995300 <b>IL PRAIRIE ESTATES SUBDIVISION</b>	Combined Radium MCL	Compliance commitment agreement / schedule approved
IL0995300 <b>IL PRAIRIE ESTATES SUBDIVISION</b>	Gross Alpha MCL	Compliance commitment agreement / schedule approved
IL3141671 <b>INDIAN HILLS FOREST PRESERVE</b>	Coliform MCL	Enforcement in process
IL0250010 <b>IOLA</b>	Total Haloacetic Acids MCL	Returned to Compliance
IL0250010 <b>IOLA</b>	Total Trihalomethane MCL	Compliance commitment agreement / schedule approved
IL3091785 <b>IPSEN INTERNATIONAL</b>	Lead Public Education TT	Enforcement in Process
IL3049296 <b>ISLAND MARINA</b>	Coliform MCL	Returned to Compliance
IL0830250 <b>JERSEYVILLE</b>	Coliform MCL	Returned to Compliance
IL3138958 <b>JOHN DOUGH/MY PLACE</b>	Coliform (Acute) MCL	Enforcement in process
IL3097444 <b>JOHN&amp;NAOMIS CORNER TAP</b>	Coliform MCL	Returned to Compliance
IL1970450 <b>JOLIET</b>	Combined Radium MCL	Compliance commitment agreement / schedule approved
IL1970450 <b>JOLIET</b>	Gross Alpha MCL	Compliance commitment agreement / schedule approved

# Appendix C

## Illinois EPA 2005 Annual Compliance

### Maximum Contaminant Level and Treatment Technique Violations

#### Listing by Water

<u>Facility Number and Name</u>	<u>Contaminant</u>	<u>Comments</u>
IL1977930 <b>JOLIET CORRECTIONAL CENTER</b>	Combined Radium MCL	Returned to Compliance
IL3116095 <b>JUBILEE CAFE</b>	Coliform MCL	Returned to Compliance
IL1977940 <b>KANKAKEE CORRECTIONAL CENTER</b>	Combined Radium MCL	Returned to Compliance
IL0730650 <b>KEWANEE</b>	Combined Radium MCL	Returned to Compliance
IL0730650 <b>KEWANEE</b>	Gross Alpha MCL	Returned to Compliance
IL3004309 <b>KILBUCK CREEK F P EDGEWOOD</b>	Coliform MCL	Returned to Compliance
IL3004283 <b>KILBUCK CREEK FP UPPER ENT</b>	Coliform MCL	Returned to Compliance
IL1430450 <b>KINGSTON MINES</b>	Combined Radium MCL	Enforcement in process
IL1430450 <b>KINGSTON MINES</b>	Gross Alpha MCL	Enforcement in process
IL1210300 <b>KINMUNDY</b>	Inadequate DBP Precursor Removal TT	Returned to Compliance
IL0630450 <b>KINSMAN</b>	Combined Radium MCL	Compliance commitment agreement / schedule approved
IL1870050 <b>KIRKWOOD</b>	Combined Radium MCL	Returned to Compliance
IL3126532 <b>KOUNTRY KORNER (126532)</b>	Coliform MCL	Returned to Compliance
IL3126581 <b>LAKE CO F P OFFICE HDQTRS #21</b>	Lead Public Education TT	Enforcement in Process
IL1110400 <b>LAKE IN THE HILLS</b>	Coliform MCL	Returned to Compliance
IL0910020 <b>LAKE SHANNON</b>	Monthly Combined Filter Effluent TT	Returned to Compliance
IL0970850 <b>LAKE ZURICH</b>	Combined Radium MCL	Compliance commitment agreement / schedule approved
IL1955150 <b>LAKEVIEW HILLS WATER SUPPLY COMPANY</b>	Combined Radium MCL	Returned to Compliance
IL1010150 <b>LAWRENCEVILLE</b>	Nitrate MCL	Returned to Compliance
IL1010150 <b>LAWRENCEVILLE</b>	Nitrate MCL	Returned to Compliance

# Appendix C

## Illinois EPA 2005 Annual Compliance

### Maximum Contaminant Level and Treatment Technique Violations

#### Listing by Water

<u>Facility Number and Name</u>	<u>Contaminant</u>	<u>Comments</u>
IL0010400 <b>LIMA</b>	Nitrate MCL	Returned to Compliance
IL1870100 <b>LITTLE YORK</b>	Combined Radium MCL	Compliance commitment agreement / schedule approved
IL1870100 <b>LITTLE YORK</b>	Gross Alpha MCL	Compliance commitment agreement / schedule approved
IL3004952 <b>LONGBRANCH SALOON</b>	Nitrate MCL	Enforcement in process
IL0850020 <b>LONGHOLLOW POINT</b>	Water Quality Parameter (Lead/Copper) TT	Returned to Compliance
IL3085902 <b>LOUD THUNDER FOREST PRESERVE B</b>	Coliform MCL	Enforcement in process
IL2010150 <b>LOVES PARK</b>	Combined Radium MCL	Returned to Compliance
IL0995336 <b>LYNNWOOD WATER CORPORATION</b>	Combined Radium MCL	Enforcement in process
IL3131177 <b>MALIBU BAY LOUNGE</b>	Coliform MCL	Enforcement in process
IL1970550 <b>MANHATTAN</b>	Combined Radium MCL	Compliance commitment agreement / schedule approved
IL1470300 <b>MANSFIELD</b>	Coliform MCL	Returned to Compliance
IL0910600 <b>MANTENO</b>	Coliform MCL	Returned to Compliance
IL0910600 <b>MANTENO</b>	Fecal Coliform MCL	Returned to Compliance
IL0311770 <b>MARKHAM</b>	Coliform MCL	Returned to Compliance
IL0990500 <b>MARSEILLES</b>	Combined Radium MCL	Returned to Compliance
IL0990110 <b>MARSEILLES SOUTH</b>	Combined Radium MCL	Returned to Compliance
IL3006940 <b>MARSHALL CO SPORTSMENS CLUB (6940)</b>	Coliform MCL	Enforcement in process
IL3006940 <b>MARSHALL CO SPORTSMENS CLUB (6940)</b>	Coliform MCL	Returned to Compliance
IL0230150 <b>MARTINSVILLE</b>	Nitrite MCL	Returned to Compliance
IL1630800 <b>MASCOUTAH</b>	Coliform MCL	Returned to Compliance
IL0490300 <b>MASON</b>	Coliform MCL	Returned to Compliance

# Appendix C

## Illinois EPA 2005 Annual Compliance

### Maximum Contaminant Level and Treatment Technique Violations

#### Listing by Water

<u>Facility Number and Name</u>	<u>Contaminant</u>	<u>Comments</u>
IL3138776 <b>MATHEWS COMPANY</b>	Trichloroethylene MCL	Enforcement in process
IL0311800 <b>MATTESON</b>	Coliform MCL	Returned to Compliance
IL3064824 <b>MC HENRY CO COLLEGE/S SELCKE</b>	Total Haloacetic Acids MCL	Returned to Compliance
IL3064824 <b>MC HENRY CO COLLEGE/S SELCKE</b>	Total Trihalomethane MCL	Returned to Compliance
IL3032979 <b>MCDUCKS</b>	Coliform MCL	Enforcement in process
IL3003483 <b>MCMILLENS CAMP-A-WHILE</b>	Coliform MCL	Returned to Compliance
IL0970110 <b>MDWS AT LKMR SULLIVAN LAKE SUBDIVISION</b>	Coliform MCL	Returned to Compliance
IL0990550 <b>MENDOTA</b>	Combined Radium MCL	Returned to Compliance
IL3110957 <b>MESSIAH LUTHERAN CHURCH (110957)</b>	Coliform MCL	Enforcement in process
IL3076984 <b>MIDLAND HIGH SCHOOL</b>	Lead Public Education TT	Enforcement in Process
IL3136614 <b>MISS NETTIES DOUBLE J</b>	Nitrate MCL	Enforcement in process
IL1870150 <b>MONMOUTH</b>	Combined Radium MCL	Returned to Compliance
IL1870150 <b>MONMOUTH</b>	Gross Alpha MCL	Returned to Compliance
IL1350020 <b>MONTGOMERY COUNTY WATER COMPANY</b>	Coliform MCL	Returned to Compliance
IL3123182 <b>MOON GLO</b>	Coliform MCL	Returned to Compliance
IL0895319 <b>MOOSEHEART</b>	Combined Radium MCL	Returned to Compliance
IL0935140 <b>MORGAN CREEK</b>	Combined Radium MCL	Returned to Compliance
IL1790500 <b>MORTON</b>	Coliform MCL	Returned to Compliance
IL0150200 <b>MOUNT CARROLL</b>	Combined Radium MCL	Returned to Compliance
IL1410350 <b>MOUNT MORRIS</b>	Combined Radium MCL	Enforcement in process
IL0090100 <b>MOUNT STERLING</b>	Coliform MCL	Returned to Compliance

# Appendix C

## Illinois EPA 2005 Annual Compliance

### Maximum Contaminant Level and Treatment Technique Violations

#### Listing by Water

<u>Facility Number and Name</u>	<u>Contaminant</u>	<u>Comments</u>
IL3094672 <b>MURPHYS PARKSIDE CAMPGROUND</b>	Coliform MCL	Returned to Compliance
IL1035269 <b>NACHUSA LUTHERAN HOME</b>	Lead Public Education TT	Returned to Compliance
IL0990600 <b>NAPLATE</b>	Combined Radium MCL	Enforcement in process
IL0110700 <b>NEPONSET</b>	Combined Radium MCL	Enforcement in process
IL0110700 <b>NEPONSET</b>	Gross Alpha MCL	Returned to Compliance
IL3010215 <b>NEW CASTLE BIBLE CHURCH</b>	Coliform MCL	Enforcement in process
IL3005595 <b>NEWTOWN MIDDLE SCHOOL</b>	Coliform MCL	Returned to Compliance
IL0890600 <b>NORTH AURORA</b>	Combined Radium MCL	Compliance commitment agreement / schedule approved
IL0890600 <b>NORTH AURORA</b>	Gross Alpha MCL	Returned to Compliance
IL0971250 <b>NORTH CHICAGO</b>	Turbidity > 1NTU CFE TT	Returned to Compliance
IL1550010 <b>OAK PARK ESTATES</b>	Combined Radium MCL	Returned to Compliance
IL1550010 <b>OAK PARK ESTATES</b>	Gross Alpha MCL	Returned to Compliance
IL1830600 <b>OAKWOOD</b>	Total Haloacetic Acids MCL	Returned to Compliance
IL3117903 <b>OFFICE CENTER</b>	Lead Public Education TT	Enforcement in Process
IL1530250 <b>OLMSTED</b>	Coliform MCL	Returned to Compliance
IL0930150 <b>OSWEGO</b>	Combined Radium MCL	Compliance commitment agreement / schedule approved
IL0930150 <b>OSWEGO</b>	Gross Alpha MCL	Returned to Compliance
IL3096453 <b>PACIFIC BEARING</b>	Coliform MCL	Returned to Compliance
IL1175150 <b>PALMYRA-MODESTO WATER COMMISSION</b>	Inadequate DBP Precursor Removal TT	Compliance commitment agreement / schedule approved
IL0210500 <b>PANA</b>	Inadequate DBP Precursor Removal TT	Returned to Compliance
IL0210500 <b>PANA</b>	Total Trihalomethane MCL	Returned to Compliance

# Appendix C

## Illinois EPA 2005 Annual Compliance

### Maximum Contaminant Level and Treatment Technique Violations

#### Listing by Water

<u>Facility Number and Name</u>	<u>Contaminant</u>	<u>Comments</u>
IL0054720 <b>PANAMA</b>	Total Trihalomethane MCL	Compliance commitment agreement / schedule approved
IL1210400 <b>PATOKA</b>	Inadequate DBP Precursor Removal TT	Returned to Compliance
IL1210400 <b>PATOKA</b>	Simazine MCL	Compliance commitment agreement / schedule approved
IL1210400 <b>PATOKA</b>	Total Haloacetic Acids MCL	Compliance commitment agreement / schedule approved
IL3074831 <b>PEOPLES GAS-MANLOVE FIELD</b>	Lead Public Education TT	Enforcement in Process
IL1970750 <b>PEOTONE</b>	Coliform (Acute) MCL	Returned to Compliance
IL1970750 <b>PEOTONE</b>	Coliform MCL	Returned to Compliance
IL1570350 <b>PERCY</b>	Combined Radium MCL	Returned to Compliance
IL1015350 <b>PETROLIA PWD</b>	Nitrate MCL	Returned to Compliance
IL0010600 <b>PLAINVILLE</b>	Lead Public Education TT	Returned to Compliance
IL3141739 <b>PORTER PARK</b>	Coliform MCL	Returned to Compliance
IL0630060 <b>PRAIRIE OAKS ESTS HOMEOWNERS ASSN</b>	Combined Radium MCL	Enforcement in process
IL0630060 <b>PRAIRIE OAKS ESTS HOMEOWNERS ASSN</b>	Gross Alpha MCL	Returned to Compliance
IL3046318 <b>PRICE BROTHERS COMPANY</b>	Coliform MCL	Enforcement in process
IL0970320 <b>PROMONTORY POINTE HOMEOWNERS ASSOCIATION</b>	Combined Radium MCL	Returned to Compliance
IL0970320 <b>PROMONTORY POINTE HOMEOWNERS ASSOCIATION</b>	Gross Alpha MCL	Returned to Compliance
IL0971100 <b>PROVIDENCE AT PAINTED LAKES</b>	Combined Radium MCL	Returned to Compliance
IL0990900 <b>RANSOM</b>	Combined Radium MCL	Enforcement in process
IL3134817 <b>RAYS RANCH HOUSE (134817)</b>	Coliform MCL	Returned to Compliance
IL0914780 <b>REDDICK</b>	Combined Radium MCL	Enforcement in process

# Appendix C

## Illinois EPA 2005 Annual Compliance

### Maximum Contaminant Level and Treatment Technique Violations

#### Listing by Water

<u>Facility Number and Name</u>	<u>Contaminant</u>	<u>Comments</u>
IL3113985 <b>RIVERDALE SCHOOL DISTRICT #100</b>	Coliform MCL	Returned to Compliance
IL1970850 <b>ROCKDALE</b>	Combined Radium MCL	Compliance commitment agreement / schedule approved
IL2010300 <b>ROCKFORD</b>	Combined Radium MCL	Compliance commitment agreement / schedule approved
IL2010300 <b>ROCKFORD</b>	Gross Alpha MCL	Compliance commitment agreement / schedule approved
IL3086751 <b>ROCKLAND OFFICE PLAZA</b>	Lead Public Education TT	Enforcement in Process
IL1970900 <b>ROMEOVILLE</b>	Combined Radium MCL	Returned to Compliance
IL3005413 <b>ROOKS CREEK ELEMENTARY SCHOOL</b>	Total Haloacetic Acids MCL	Returned to Compliance
IL3005413 <b>ROOKS CREEK ELEMENTARY SCHOOL</b>	Total Trihalomethane MCL	Returned to Compliance
IL3132860 <b>SALVATION ARMY EAGLE CREST</b>	Coliform MCL	Returned to Compliance
IL0991050 <b>SENECA</b>	Combined Radium MCL	Returned to Compliance
IL3095174 <b>SHAMROCK GOLF COURSE HAND PUMP</b>	Coliform MCL	Enforcement in process
IL3090290 <b>SHERRARD SENIOR HIGH SCHOOL</b>	Coliform MCL	Returned to Compliance
IL0890040 <b>SILVER GLEN ESTS</b>	Combined Radium MCL	Compliance commitment agreement / schedule approved
IL1615750 <b>SILVIS HEIGHTS WATER CORP</b>	Coliform MCL	Returned to Compliance
IL0050250 <b>SMITHBORO</b>	Total Trihalomethane MCL	Returned to Compliance
IL0630650 <b>SOUTH WILMINGTON</b>	Combined Radium MCL	Returned to Compliance
IL1570600 <b>SPARTA</b>	Monthly Combined Filter Effluent TT	Compliance commitment agreement / schedule approved
IL0111000 <b>SPRING VALLEY</b>	Combined Radium MCL	Returned to Compliance
IL3034074 <b>SQUIRREL PIT</b>	Nitrate MCL	Enforcement in process

# Appendix C

## Illinois EPA 2005 Annual Compliance

### Maximum Contaminant Level and Treatment Technique Violations

#### Listing by Water

<u>Facility Number and Name</u>	<u>Contaminant</u>	<u>Comments</u>
IL0950500 <b>ST AUGUSTINE</b>	Coliform MCL	Returned to Compliance
IL1190950 <b>ST JACOB</b>	Combined Radium MCL	Returned to Compliance
IL1550300 <b>STANDARD</b>	Combined Radium MCL	Compliance commitment agreement / schedule approved
IL1550300 <b>STANDARD</b>	Gross Alpha MCL	Returned to Compliance
IL3047530 <b>STATELINE FOUNDRIES</b>	Lead Public Education TT	Enforcement in Process
IL1171050 <b>STAUNTON</b>	Inadequate DBP Precursor Removal TT	Returned to Compliance
IL1171050 <b>STAUNTON</b>	Insufficient Inactivation TT	Returned to Compliance
IL1171050 <b>STAUNTON</b>	Total Trihalomethane MCL	Returned to Compliance
IL3024737 <b>STONE CITY VFW</b>	Coliform MCL	Enforcement in process
IL0975280 <b>SUMMIT HOMEOWNERS ASSOCIATION</b>	Coliform MCL	Returned to Compliance
IL1010300 <b>SUMNER</b>	Nitrate MCL	Returned to Compliance
IL1190120 <b>SUNNY SHORES MHP</b>	Coliform MCL	Returned to Compliance
IL0310080 <b>SUNSET MHP</b>	Combined Radium MCL	Compliance commitment agreement / schedule approved
IL1315200 <b>SWEDONA WATER ASSOCIATION</b>	Coliform MCL	Returned to Compliance
IL0370550 <b>SYCAMORE</b>	Combined Radium MCL	Compliance commitment agreement / schedule approved
IL0971210 <b>TERRACE OAK APARTMENTS</b>	Coliform MCL	Returned to Compliance
IL3117283 <b>TERRACE OAKS TWO</b>	Lead Public Education TT	Enforcement in Process
IL3019992 <b>THE BACK 40 INC</b>	Coliform MCL	Returned to Compliance
IL3097378 <b>THE OLD MILL</b>	Coliform MCL	Returned to Compliance
IL3126508 <b>THE OLD SHAMROCK</b>	Coliform MCL	Enforcement in process
IL0970310 <b>THE PRESERVE AT LONG GROVE</b>	Combined Radium MCL	Returned to Compliance



# Appendix C

## Illinois EPA 2005 Annual Compliance

### Maximum Contaminant Level and Treatment Technique Violations

#### Listing by Water

<u>Facility Number and Name</u>	<u>Contaminant</u>	<u>Comments</u>
IL1775255 <b>TIMBER RIDGE MOBILE ESTATES</b>	Combined Radium MCL	Compliance commitment agreement / schedule approved
IL3131060 <b>TOP DIE CASTING CO</b>	Lead Public Education TT	Enforcement in Process
IL0317765 <b>TOUHY MHP</b>	Combined Radium MCL	Returned to Compliance
IL0317765 <b>TOUHY MHP</b>	Gross Alpha MCL	Returned to Compliance
IL1190080 <b>TRITOWNSHIP WATER DISTRICT</b>	Total Trihalomethane MCL	Returned to Compliance
IL1110900 <b>UNION</b>	Combined Radium MCL	Returned to Compliance
IL0971170 <b>UNIVERSITY ST MARY OF THE LAKE</b>	Lead Public Education TT	Returned to Compliance
IL2015160 <b>UTL INC-COVENTRY CREEK SUBDIVISION</b>	Combined Radium MCL	Compliance commitment agreement / schedule approved
IL0450400 <b>VERMILION</b>	Water Quality Parameter (Lead/Copper) TT	Monitoring ongoing
IL3005777 <b>VICTORY BAPTIST CHURCH</b>	Coliform MCL	Enforcement in process
IL0875510 <b>VIENNA CORRECTIONAL CENTER</b>	Inadequate DBP Precursor Removal TT	Returned to Compliance
IL0410350 <b>VILLA GROVE</b>	Total Trihalomethane MCL	Returned to Compliance
IL1310450 <b>VIOLA</b>	Combined Radium MCL	Returned to Compliance
IL1310450 <b>VIOLA</b>	Gross Alpha MCL	Returned to Compliance
IL0971770 <b>VOLO</b>	Combined Radium MCL	Returned to Compliance
IL3060285 <b>WALNUT GR UNITED METHODIST CHU</b>	Coliform MCL	Enforcement in process
IL0670650 <b>WARSAW</b>	Total Trihalomethane MCL	Returned to Compliance
IL0890110 <b>WASCO SD</b>	Combined Radium MCL	Returned to Compliance
IL0430900 <b>WEST CHICAGO</b>	Combined Radium MCL	Returned to Compliance
IL0430900 <b>WEST CHICAGO</b>	Gross Alpha MCL	Returned to Compliance

# Appendix C

## Illinois EPA 2005 Annual Compliance

### Maximum Contaminant Level and Treatment Technique Violations

#### Listing by Water

<u>Facility Number and Name</u>	<u>Contaminant</u>	<u>Comments</u>
IL1910010 <b>WESTERN WAYNE WATER DISTRICT</b>	Total Trihalomethane MCL	Returned to Compliance
IL0990060 <b>WHISPERING PINES MHP</b>	Combined Radium MCL	Compliance commitment agreement / schedule approved
IL0990060 <b>WHISPERING PINES MHP</b>	Gross Alpha MCL	Returned to Compliance
IL0995425 <b>WILDLIFE MHP</b>	Combined Radium MCL	Enforcement in process
IL3042234 <b>WILL COUNTY DEPT OF HIGHWAYS</b>	Lead Public Education TT	Enforcement in Process
IL0990030 <b>WOODSMOKE RANCH ASSOCIATION</b>	Combined Radium MCL	Returned to Compliance
IL0990030 <b>WOODSMOKE RANCH ASSOCIATION</b>	Gross Alpha MCL	Returned to Compliance
IL0111150 <b>WYANET</b>	Lead Public Education TT	Returned to Compliance
IL0970080 <b>WYNSTONE WATER COMPANY</b>	Combined Radium MCL	Compliance commitment agreement / schedule approved
IL0930250 <b>YORKVILLE</b>	Combined Radium MCL	Compliance commitment agreement / schedule approved
IL0930250 <b>YORKVILLE</b>	Gross Alpha MCL	Compliance commitment agreement / schedule Approved