



# D i g e s t e r o v e r t h e s p i l l w a y

*"for optimum operation/maintenance of all water and wastewater facilities"*

## 2002-2003 TRAINING CATALOG

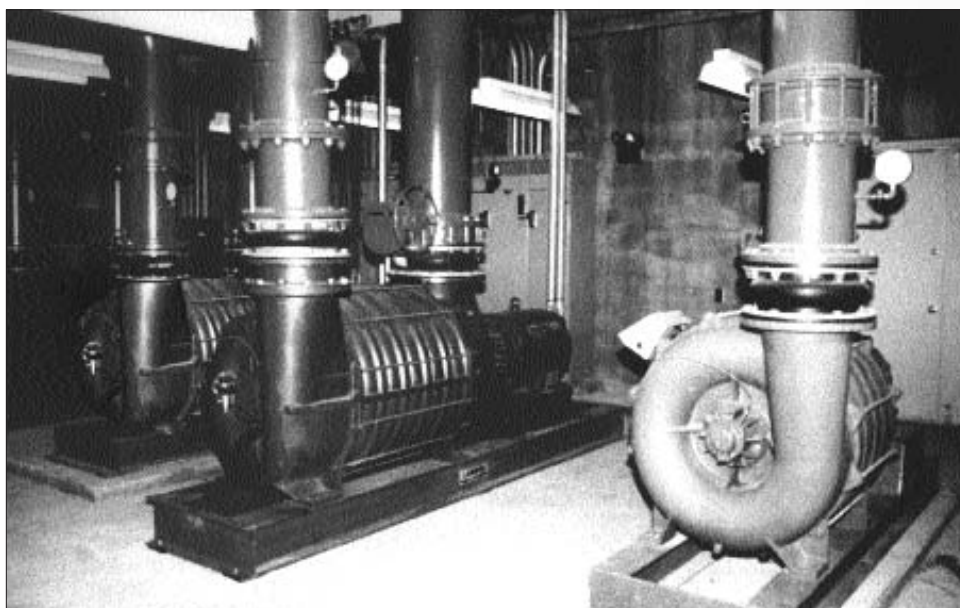
This catalog lists water supply and wastewater operator training courses offered by Illinois community colleges and the Environmental Resources Training Center (ERTC) at Southern Illinois University/Edwardsville.

If you are interested in enrolling in a course, or if you want more information, telephone or write the contact person listed for each institution. For your convenience, a form is included at the end of the catalog for your use in requesting information, or for pre-registering for an announced course.

The ERTC courses, workshops and seminars are taught at various locations throughout Illinois and in varied formats to make it easier for operators to attend.

For additional information contact:

Environmental Resources Training Center  
Campus Box 1075  
Southern Illinois University  
Edwardsville IL 62026-1075  
Contact: Program Director  
618-650-2030  
Fax 618-650-2210



### ERTC Seeking Help Identifying Toxic Algae in Illinois Waters

The Environmental Resources Training Center is performing a survey in to determine if *Cylindrospermopsis*, a toxin-producing algae, is present in Illinois waters. ERTC is requesting help from any surface water supply in algae identification. Please call 618- 650-2030 for more information

#### What is *Cylindrospermopsis raciborski*?

*Cylindrospermopsis raciborski* is a toxin-producing blue-green algae that has been identified in Indiana waters. In August 2001, this toxic algae was found blooming and producing toxin in Ball Lake, Steuben County, Ind. Once it was found in Ball Lake, samples from other lakes were tested. In addition to Ball Lake, the blue-green algae was found in Eagle Creek Reservoir, Morse Reservoir and Kokomo Reservoir.

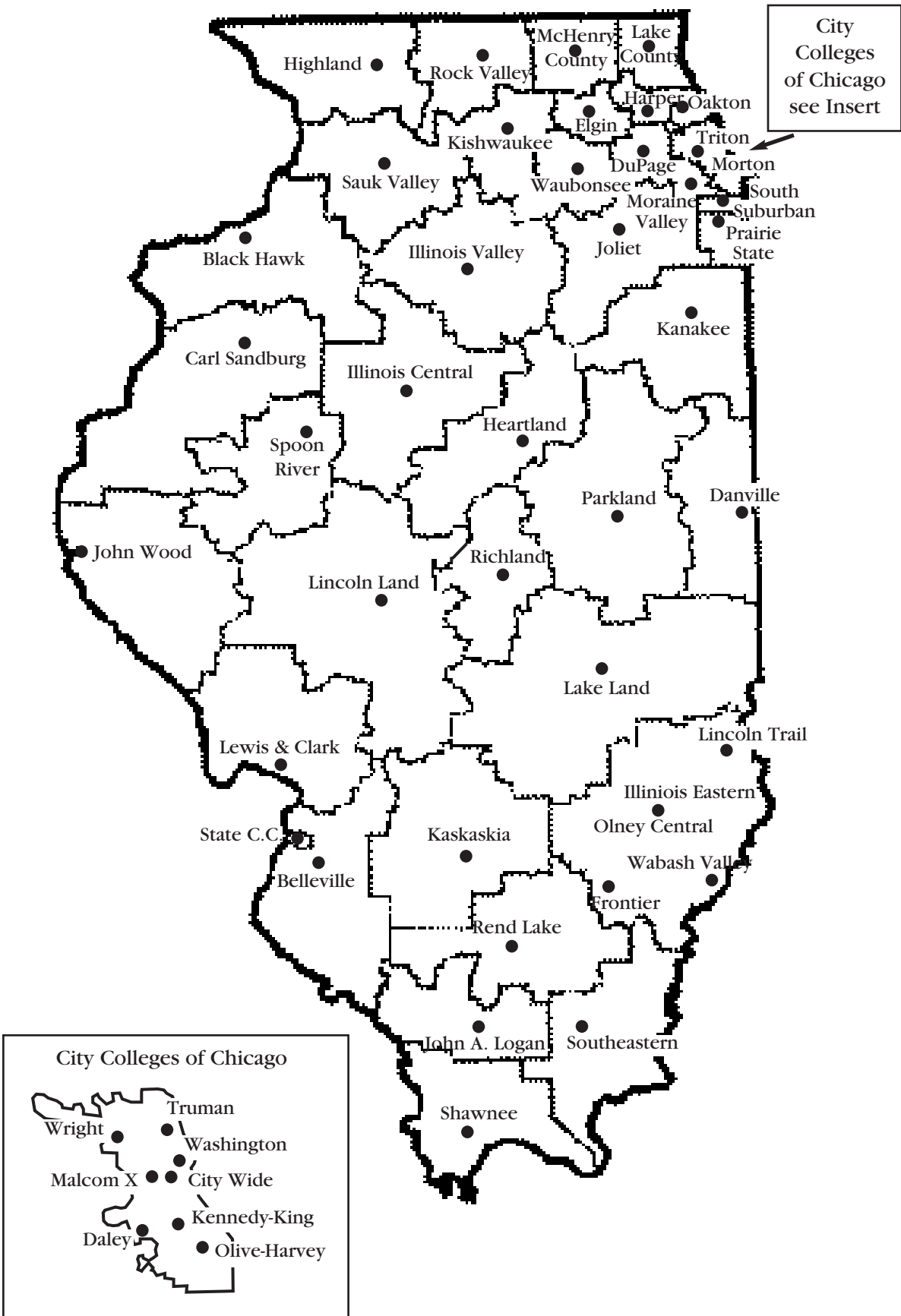
This blue-green algae does not form a typical scum layer usually associated with blue-greens. Typically dense algal cells are located in a band several feet from the surface in a lake or reservoir. The cells are small and do not create a color in the water that would easily distinguish it from other algae. There is no taste and odor associated with *Cylindrospermopsis* or its toxin.

Surface water treatment facilities will be contacted by letter and phone advising them about *Cylindrospermopsis raciborskii* and will be given information about sampling and preserving the algae cell for identification.

We expect to provide follow up information in future issues of *Digester/Over the Spillway*, as well.

#### IN THIS ISSUE

Foreword.....	3
ERTC Information .....	4
ERTC Courses.....	5-7
Community Colleges .....	8-14
Other Courses .....	13-14
Illinois Rural Water Association Schedule .....	15



---

# FOREWORD

The Environmental Resources Training Center (ERTC) is designated by the Illinois Environmental Protection Agency (IEPA) as the state center to develop, coordinate and present training for potable water supply and wastewater treatment plant operators. One of our main functions is to assist in coordinating water supply and wastewater treatment operator training programs in Illinois.

This catalog was prepared by ERTC to provide as complete a listing as possible of training activities which will be available during the current academic year. We hope the information will be useful in planning for training events you might wish to attend during the year. This effort was financed by a contract from the IEPA's Bureau of Water.

Training events are listed in three parts:

Part I: Environmental Resources Training Center

Part II: Illinois Community Colleges

Part III: Other Training Activities

If you are interested in enrolling in a course, or if you just want more information, call or write the contact person listed for each institution. For your convenience, we have included pre-registration forms for training courses at the end of the catalog.

Please review the training activities in the catalog. Illinois offers a wide variety of excellent training opportunities to help you maintain or improve your skills as water quality operations specialists. However, the success of any training program depends on participation in the programs. Evaluate the training currently available through your local community college or the ERTC. If you have needs, be sure to let us know. Only by receiving information from you can we effectively plan programs to suit your needs.

We have tried to make the listing as complete as possible but we may have missed some training activities. If you have other information, please let us know by calling 618-650-2030.

Please share this catalog with others who might not have received a copy. Why not place a copy on your plant's bulletin board? By doing so, you may be doing a favor for a lot of your co-workers.

The ERTC would like to thank everyone who assisted in developing the training catalog, particularly the community college contact people who completed and returned the ERTC questionnaires to us.



---

# PART I - ENVIRONMENTAL RESOURCES TRAINING CENTER

The ERTC offers a comprehensive program in all aspects of water supply and wastewater treatment including courses in laboratory analysis, plant operations, troubleshooting, water distribution, wastewater collection, maintenance methods and management systems. Basic and advanced courses are also taught. Both the experienced and newly employed operator can find training to meet individual needs and interests.

Courses, workshops and seminars taught by the ERTC are accepted by the Illinois EPA for education and training credits to meet certification requirements. However, wastewater operators may have to complete several workshops to meet the “wastewater course” requirements as defined under Illinois EPA Wastewater certification rules.

ERTC courses, workshops and seminars are taught at various locations throughout Illinois and in varied formats to make it easier for operators to attend training programs. Some courses are taught in the evening; some will be one, two or three day seminars, and some will be weeklong “short schools.” Most of the seminars and workshops will be taught at off-campus sites. The course schedule for Fall 2001, and course descriptions, follow this page.

## **CERTIFICATE OF COMPLETION**

The ERTC offers a one-year, full-time program for pre-service personnel leading to a Certificate of Completion in Water Quality Operations.

This full-time program for pre-service personnel can be completed in only three semesters (one year) and includes training in both water supply and wastewater treatment operations. Students receive classroom and laboratory instruction. Students practice operations in hands-on training using ERTC’s pilot plant facilities and laboratories. During the summer months, students are placed in treatment facilities for 10 weeks to gain on-the-job training.

The curriculum, which provides 1,450 total contact hours of instruction, is divided into the following areas:

- Water Supply Operations
- Wastewater Operations
- Water Quality Control Laboratory Testing
- Water Quality Control Facilities Maintenance
- Supervised Work Study

Graduates of the program receive a Certificate of Completion from Southern Illinois University at Edwardsville and will meet all educational requirements for certification as a water quality control operator by Illinois EPA.

Formal admission to Southern Illinois University at Edwardsville is not required. High school graduation or G.E. D. equivalent is desired.

The program starts in late August. If you or some of your family or friends are interested call 618-650-2030 for additional information or an application to the program.

### **Digester/Over the Spillway**

Published by the Bureau of Water,  
Division of Public Water Supplies and  
Division of Water Pollution Control.

**Editor.....Joan Muraro**  
**Layout & Design.....Rusty I. Downs**

# ATTENTION!

ERTC is now on-line!  
Our web page address is:

<http://www.siu.edu/ERTC>

## ERTC Fall 2002 Schedule

### Daytime Workshops

All daytime workshops meet from 8:30 a.m. to 5 p.m.  
Exact locations are provided prior to the first class meeting.

Dates	Title	Location	Cost
8/6-9	Cross Connection Control	Peoria	\$ 450
9/4	Vulnerability Assessment Procedures	ERTC	\$ 200
9/10-13	Cross Connection Control	Rockford	\$ 200
9/17-18	Groundwater (Class C Operations)	E. Peoria	\$ 200
9/23-24	Distribution Systems (Class D Operations)	Aurora	\$ 250
9/23-27	Wastewater Short School	Rockford	\$ 490
10/8-11	Cross Connection Control	Chicago	\$ 450
10/16	Vulnerability Assessment Procedures	E. Peoria	\$ 200
10/25	Vulnerability Assessment Procedures	Grayslake	\$ 200
11/4	Wastewater Math	Lake in the Hills	\$ 125
11/5-8	Cross Connection Control	Carbondale	\$ 450
11/13	Backflow Prevention Symposium	Bloomington	\$ 90
11/19	Vulnerability Assessment Procedures	Mt. Vernon	\$ 200
11/25-26	Filtration (Class B Operators)	Aurora	\$ 250
12/3-5	Electrical Maintenance	E. Peoria	\$ 400
12/4-5	Distribution Systems (Class D Operators)	Effingham	\$ 250
12/9-10	Lime-Soda Softening (Class A Operations)	Aurora	\$ 250
12/10-13	Cross Connection Control	Naperville	\$ 450
12/18	Vulnerability Assessment Procedures	Springfield	\$ 200

### Fall 2002

### Workshop Descriptions

**Class D Water Supply Operations (1.5CEUs)** General operation and maintenance procedures for water distribution systems, with related math, are covered. Topics include pumps and hydraulics; storage; installation procedures for water mains, water services and hydrants; meters and reduction of unaccounted-for water; cross connections; winter operations; maps and records; sampling; and operation reports.

**Ground Water Class C Water (1.5 CEUs)** Operation and maintenance of wells and chemical feeding operations are covered, with related math and chemistry. Topics include well math, chlorination, fluoridation, chemical feeding math, chemical formulas, sampling and operation reports.

**Filtration (Class B Water) (1.5 CEUs)** Ground water treatment and ion exchange softening are covered, with related math and chemistry. Ground water topics include water quality, oxidation, iron and manganese control, filtration, process waste disposal, sampling and operation reports.

**Lime-Soda Softening (Class A Water) (1.5 CEUs)** Surface water treatment and lime softening are covered, with related math and chemistry. Topics include surface water quality, clarification, filtration, taste and odor control, process waste disposal, jar testing, sampling and operation reports.

---

**Cross Connection Control (2.8 CEUs)** Includes demonstration of inspection and testing procedures for reduced pressure zone (RPZ) and double check valve backflow preventers. Each participant is provided opportunities to perform inspection and testing procedures. A written exam covering significant topics related to cross-connection control is included. To successfully complete the workshop, participants must pass the written exam and properly perform inspection and testing procedures on RPZ and double check valve backflow preventers. There is only one chance to pass each section of the exam (written and hands-on). Failure in either section will require the individual to retake the entire course at a later date at FULL COST. Licensed plumbers will be eligible for Illinois EPA approval to inspect and test RPZ and double check valve backflow preventers on successful course completion. Certified water operators are eligible for a limited IEPA approval.

**Backflow Prevention Symposium (0.5 CEUs)** This annual symposium provides updates of Illinois backflow prevention regulations, activities and training opportunities. Relevant backflow prevention topics will be presented by a variety of speakers. Lunch is provided with the registration fee.

**Electrical Maintenance (2.1 CEUs)** Topics covered in this course include: electrical safety, electrical testing equipment, O & M of AC motors, wiring diagrams and troubleshooting. In hands-on sessions, participants learn operation and testing of common components in electrical panels. Other hands-on exercises include wiring of motor control panels and basic troubleshooting of the panels.

**Vulnerability Assessment Procedures (0.7 CEUs)** According to the new Drinking Water Security and Safety Act “Each community water system serving a population greater than 3,300 persons shall conduct an assessment of the vulnerability of its system to a terrorist attack or other intentional act.” This workshop will focus on measures used by water/wastewater treatment plant personnel to perform vulnerability assessments. Areas to be discussed include vulnerability assessment, threat evaluation, water distribution and other relevant topics. In a work session, participants will perform an assessment on a fictitious water treatment plant. Security equipment will also be discussed. Workshop instructors have performed vulnerability assessments.

**Wastewater Math (0.7 CEUs)** Practice in solving math problems used at wastewater treatment plants and on certification exams are covered. Math for wastewater lagoons, rotating biological contactors (RBCs), trickling filters, activated sludge processes, chemical dosages and land application of sludge will be covered. Word problems and process control calculations are stressed. Use of spreadsheets for process control will also be discussed.

**Wastewater Operator Short School (3.1 CEUs)** An intensive training session to develop skills specific to process control and operation of Class 4, 3, 2 and 1 plants. All aspects of plant operations, process control tests and their interpretation, process control math, safety reports and records for each specific class are covered. On Friday afternoon, the Illinois EPA wastewater certification exam is given for eligible students.

- Class 4:** Stresses stabilization ponds, collection systems and chlorination systems. Class 4 certification exam materials are reviewed.
- Class 3:** Trickling filter and RBC units are covered. Class 3 certification exam materials are reviewed.
- Class 2/1:** Small activated sludge treatment plants with aerobic and anaerobic sludge digesters are stressed. Class 2 and 1 exam materials are reviewed.

**Note to Students taking Wastewater Short School**

**YOU MUST MAKE APPLICATION DIRECTLY TO IEPA/DWPC TO TAKE THE  
CERTIFICATION EXAM ON FRIDAY AFTERNOON**

Illinois EPA Wastewater Certification Program 217-782-9720

---

## Evening Courses

Evening courses meet from 6-9 p.m. one night per week unless otherwise indicated

**Basic Water Supply** 4.5 CEUS      **Dates:** Aug. 28-Dec. 11, 2002      **Time:** 6-9 p.m.  
**Schedule:** Wednesdays (15 weeks)      **Location:** Aurora Water Plant      **Fee:** \$450  
**Instructor:** Jerry Adrian      **CEUs:** 4.5

An introduction to water supply covering Class D and C operations. Topics include wells, chlorination, fluoridation, chemical treatment, distribution systems, pumps, sampling, operating reports, water quality and related math.

**Class B & A Water Supply**      **Dates:** Aug. 27-Dec. 10, 2002      **Time:** 6-9 p.m.  
**Schedule:** Tuesdays (15 weeks)      **Location:** ERTC (SIUE campus)      **Fee:** \$450  
**Instructor:** Marty Reynolds      **CEUs:** 4.5

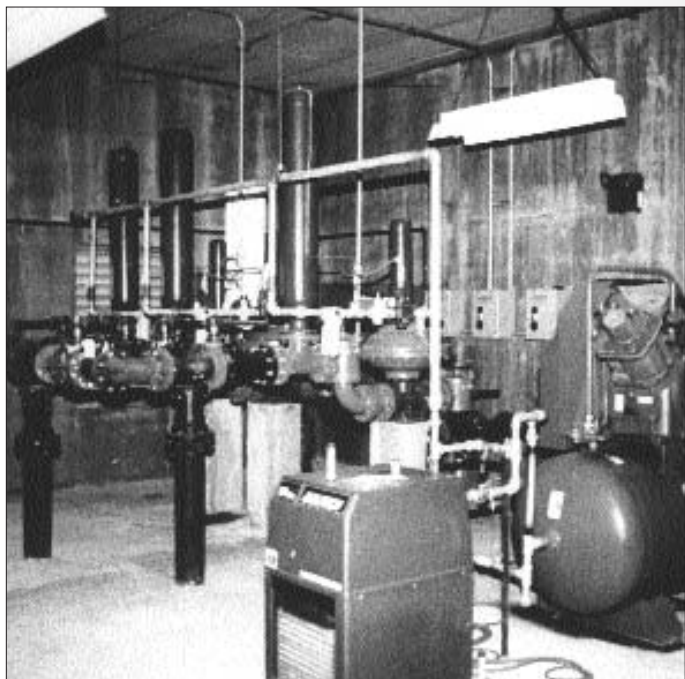
This course is intended to assist in preparing for the Class B and A certification exams. Groundwater treatment, ion exchange softening, surface water treatment and lime softening are covered, with related math and chemistry. Topics include groundwater quality, oxidation, iron and manganese control, surface water quality, clarification, filtration, taste and odor control, process waste disposal, jar testing, sampling and operation reports.

### Basic Wastewater Treatment

1)      **Dates:** Sept. 9-Nov. 25, 2002      **Time:** 6-9 p.m.  
**Schedule:** Mondays (12 weeks)      **Location:** ERTC (SIUE campus)      **Fee:** \$400  
**Instructor:** Mike Wibben      **CEUs:** 3.6

2)      **Dates:** Sept. 10-Nov. 26, 2002      **Time:** 6-9 p.m.  
**Schedule:** Tuesday (12 weeks)      **Location:** New Lenox      **Fee:** \$400  
**Instructor:** Mike Burris      **CEUs:** 3.6

Sources and characteristics of wastewater are taught. Topics include biological treatment principles, process control, normal operation and preventive maintenance for collection systems, preliminary treatment devices, primary treatment devices, stabilization ponds and disinfection systems. Small activated sludge plants are discussed, as well as federal and state laws, rules and regulation.



---

# PART II: ILLINOIS COMMUNITY COLLEGE COURSE SCHEDULES

*The following information on courses has been provided to ERTC by the community college contracts. Tuition rates as listed are tentative. Before you make payment for any course, we suggest that you contact the individual college to verify the cost. Under each individual community college, information which is the same for each course offered is listed first, with specific course details following.*

**Black Hawk College**  
301 42nd Avenue  
East Moline, Ill. 61244  
(309) 755-2200 ext. 8244  
Contact: Ms. Barbara Virtue  
Coordinator, Lifelong Learning

## Fall 2002

**Title: Beginning Potable Water**  
Schedule: Wednesdays, 6-9 p.m.  
Starts: Sept. 9, 2002  
Instructor: D. Solchenberger  
Prerequisites: none

The course is designed to prepare students for certification as Class "C" and "D" Public Water Supply operators. Subjects covered include well and distribution system operation and maintenance, basic water flow hydraulics and chemical dosage mathematics, Environmental Protection Agency regulations, chlorination and fluoridation. Students can use this course as a substitute for part of the "hands on" experience required before one can take the state of Illinois Class "C" or "D" water supply operators certification examination.

## Winter 2003

**Title: Beginning Wastewater Sewage Treatment**

Schedule: Wednesday, 6-9 p.m.  
Starts: Jan. 29, 2003  
Instructor: D. Solchenberger  
Prerequisite; none

**Carl Sandburg College**  
No longer offers courses

**College of DuPage**  
No longer offers courses.

**College of Lake County**  
19351 W. Washington St.  
Grayslake, Ill. 60030-1198  
(847) 2543-2903  
Contact: Rob Twardock, coordinator

No information received for 2002-2003. Contact community college for additional information.

**Danville Area Community College**  
2000 E. Main St.  
Danville, Ill. 61832  
(217) 443-8778  
Contact: Vickie Howie, coordinator of continuing education

No information received for 2002-2003. Contact community college for additional information.

**East St. Louis Higher Education Center**  
601 Brady  
East St. Louis, Ill. 62201

This college does not offer water supply/wastewater training programs.

**Elgin Community College**  
1700 Spartan Drive  
Elgin, Ill. 60120  
(847) 697-1000 ext. 6926  
Contact: Kathleen Collins, corporate representative  
This school does not offer courses in these areas at the present time.

**Environmental Resources Training Center**  
See Section I

**Frontier Community College**  
Lot #2 Frontier Drive  
Fairfield, Ill. 62837  
(618) 842-3711  
Contact: Rita Ladner  
No program is offered.

**Heartland Community College**  
1226 Towanda Ave.  
Bloomington, Ill. 61701  
(309) 827-0500 ext. 425  
Contact: Ms. Sylvia Baines, Director of Work Place Development and Industry

Courses offered on an as-needed basis.

**Highland Community College**  
1998 Pearl City Rd.  
Freeport, Ill. 61032  
(815) 235-6121 ext. 217  
Contact: Cathy Wilhelms, continuing education coordinator

No classes scheduled for 2002-2003. Contact community college for additional information.

---

**Illinois Central College**

One College Drive  
East Peoria, Ill. 61635  
(309) 694-5365

Contact: R. Scott Dunham, chair,  
math/ science/engineering

**General Information**

Tuition: \$50/hour  
Length: 16 weeks  
Credit: 2-3 hours, depending on  
course

**Fall 2002*****Title: WST 081 Wastewater Treatment II***

Schedule: Thursdays, 7-9:50 p.m.  
Starts: Sept. 19, 2002 (12 weeks)  
Instructor: TBA  
Credit: 2 hours  
Prerequisite: WST 080

Course is continuation of Wastewater Treatment I. Topics are filters, pond treatment, disinfection, chlorine handling, plant safety, records, report writing, sampling and lab procedures.

***Title: WST 090 Principles of Water Plant Operation***

Schedule: Mondays, 6:30-9:20 p.m.  
Starts: Aug. 19, 2002  
Instructor: E. Kaufmann  
Credit: 3 hours  
Prerequisites: None

Includes basics in water treatment plant operation. Topics are bacteriology, surface water wells and pumps, distribution and storage, iron removal, chlorination, basic math and quality protection.

**Winter 2003*****Title: WST 080 Wastewater Treatment I***

Schedule: Thursdays  
Starts: TBA, January 2003  
Instructor: TBA  
Credit: 3 hours  
Prerequisite: None

Basic course designed to train and/or update wastewater treatment plant operators. Content of course will include material necessary for plant operator to take certification exam at Illinois Class 4 level.

***Title: WST 091 Principles of Water Plant Operation—Intermediate***

Schedule: Mondays  
Starts: TBA, January 2003  
Instructor: TBA  
Credit: 3 hours  
Prerequisites: WST 090 or Class C

Includes information on the chemical, biological and physical sciences essential to the mechanics of filtration, aeration and filtration, ion exchange system and distribution of water.

**Illinois Valley Community College**

815 N. Orlando Smith Road  
Oglesby, Ill. 61348  
(815)224-2720 ext. 482  
Contact: Ronald Groleau, chairman  
Natural Sciences and Mathematics

**Fall 2002*****Title: WWT 1200 Wastewater Treatment I***

Schedule: Tuesdays, 6:30-9:15 p.m.  
Starts: Aug. 20, 2002  
Instructor: Christensen  
Prerequisites: None  
Tuition: \$53/credit hour

This course will train operators primarily for the Class 3 and 4 examinations although course content will apply to all certification levels. Topics covered will include introduction to wastewater collection systems, lift stations, flow measurements, pretreatment, primary treatment, stabilization ponds, intermittent sand filters, chemical feeders, sampling and legal requirements, chlorination, effects of discharge on receiving streams, and basic math.

***Title: PWS 120 Public Water Supply Operations***

Schedule: Tuesdays.  
Starts: Aug. 20, 2002  
Instructor: Downie  
Prerequisite: None  
Tuition: \$53/ credit hour  
This is an introductory course of water supply operations. The topics will include operation and maintenance of water distribution systems, chlorination, fluoridation, and water supply math.

Contact college for spring 2003 offerings.

**John A. Logan College**

Greenbrier Rd., R.R. 2  
Carterville, Ill. 62918  
(618) 985-3741 Ext. 202  
Contact: Dr. Barry Hancock, Dean,  
special programs

No information received for 2002-2003. Contact community college for additional information.

**John Wood Community College**

150 S. 48th St.  
Quincy, Ill. 62301  
(217) 224-6500  
Contact: John Drea, assistant dean,  
Vocational Education  
No program is offered.

**Joliet Junior College**

1215 Houbolt Rd.  
Joliet, Ill. 60431  
(815) 280-1423  
Contact: Kristin Reef, seminars  
coordinator

Tuition: \$199-299  
Course length: 4-16 weeks  
Credit: 1-3 CEUs

---

## Fall 2002

### ***Title: BATC 885 Water Treatment Operator Review Class C & D***

Schedule: Mondays, 6-8:45 p.m.

Starts: Aug. 26, 2002

Instructor: TBA

Prerequisite: Work experience with water to take exam.

Preparation for the IEPA certification exam for Class C and D grades of water plant operation. Topics: develop an understanding of the uses, importance and sources of water; its physical, chemical, bacteriological and biological quality; and collection, treatment, storage and distribution of water.

### ***Title: BATC 886 Water Treatment Operator Review Class A & B***

Schedule: Wednesdays, 6:30-9:15 p.m.

Starts: Aug. 28, 2002

Instructor: Wade Jacobi

Prerequisites: None

Preparation for the IEPA certification exam for Class A and B grades of water plant operation. Develop science/mechanics of aeration, coagulation, sedimentation, filtration methods, ion exchange water softening, lime-soda and water softening, iron and manganese control and taste/odor control.

### ***Title: BATC 882 Wastewater Treatment Operator Review Class 3 & 4***

Schedule: Wednesdays, 6:30-9:15 p.m.

Starts: Aug. 28, 2002

Instructor: Wade Jacobi

Prerequisite: Work experience with wastewater to take exam

Introduction and preparation for the IEPA Class 3 and 4 operator certification exam. Develop an understanding of primary and secondary treatment systems, physical chemical processes, and disinfection.

### ***Title: BATC 883 Wastewater Treatment Operator Review Class 1 & 2***

Schedule: Thursdays, 6:30-9:15 p.m.

Starts: Aug. 23, 2002

Instructor: Mike Turley

Prerequisites: Work experience with wastewater to take exam

Preparation for the IEPA exam for Class 1 or 2 wastewater treatment operator license. Includes all materials.

### ***Title: BATC 889 Wastewater and Water Utility Management***

Schedule: Thursdays, 7-10 p.m.

Starts: Aug. 26, 2002

Instructor: TBA

This course is designed for new and existing water and wastewater utilities foremen, supervisors, superintendents and managers who want to use sound business practices in managing their utilities.

### ***Title: BATC 888 Class K Industrial Wastewater Treatment Exam Prep***

Schedule: Saturdays, 8-11 a.m.

Starts: Oct. 5, 2002

Instructor: TBA

Covers principles of treatment measures used to prevent and control process upsets; methods used for solids handling; sludge disposal techniques; sources, characteristics and concentrations of industrial wastes; removal efficiencies; effluent monitoring requirements; laboratory techniques; safety, and record keeping.

\$729 per company for up to four persons with an additional \$35 per person for materials.

### ***Title: WTR 882 NPDES Reporting***

Schedule: Thursdays, 6:30-9:30 p.m.

Starts Oct. 3, 2002

Instructor: TBA

This course covers basic lab equipment, basic lab terminology, and basic lab procedures. You will learn how to run standards and controls

and run bell curves for the standards and controls. Sample collection and preservation will also be covered.

### ***Title: WTR 880 Metal Waste Streams***

Schedule: TBA

Starts: TBA

Instructor: TBA

This course is designed to train personnel in the safe and effective operation and maintenance of wastewater treatment facilities for electroplating, metal finishing and printed circuit board manufacturing.

## Spring 2003

### ***Title: Collection Systems Management***

Schedule: Wednesdays, 6:30-10 p.m.

Starts: TBA

Instructor: TBA

This course provides methods to reduce your collection system's inflow and infiltration. It covers flow monitoring, new construction inspection, how to perform inflow and infiltration analysis, as well as all aspects of collection system operation and maintenance.

All Fall 2002 courses are offered in Spring 2003 with the exception of Wastewater and Water Utility Management (BATC 889) with dates to be announced.

### **Kankakee Community College**

River Road, Box 888

Kankakee, Ill. 60901

(815) 933-0269

Contact: Debra Heyer-Denson,  
Associate Director, Corporate and  
Continuing Education

No information received for 2002-2003. Contact Community College for additional information.

---

### **Kaskaskia Community College**

27210 College Road  
Centralia, Ill. 62801  
(618) 532-1981

Contact: Paul Rehberg

No program as such. Courses are offered on an as-requested basis.

Contact community college for additional information.

### **Kishwaukee College**

21193 Malta Road  
Malta, Ill. 60150  
(815) 825-2086 ext. 382

Contact: Don Higgs, Dean, business and technology

No information received for 2002-2003. Contact community college for additional information.

### **Lake Land Community College**

5001 S. Lake Land Blvd.  
Mattoon, Ill. 61938  
217- 234-5331

Contact: Sandy Gourley, Chairman, social science

General information

Tuition: \$200

Length: 16 weeks

Credit: 4 hours

### **Fall 2002**

#### ***Title: WT0030 Basic Wastewater Treatment***

Schedule: Wednesday, 6:30-10:10 p.m.

Starts: August 28, 2002

Instructor: Joseph McKenzie

Prerequisite: none

Study of the chemical, physical and biological aspects of wastewater treatment facilities and collection system maintenance.

### **Spring 2002**

#### ***Title: WTO 031 Advanced Wastewater Treatment***

Schedule: Wednesdays, 6:30-10:10 p.m.

Starts: Jan. 15, 2003

Instructor: Joseph McKenzie

Prerequisite: WT0030

Study of the chemical, physical and biological aspects of advanced wastewater treatment facilities.

### **Lewis and Clark Community College**

5800 Godfrey Road  
Godfrey, Ill. 62035  
(618) 466-3411 ext. 4400

Contact: Linda Chapman, Dean, Academic Affairs

No longer provides training

### **Lincoln Land Community College**

5250 Shepherd Road  
Springfield, Ill. 62794  
217- 786-2406

Contact: David Green, Department chair, AIT

### **Fall 2002**

General Information

Tuition: \$50/hour

Course length: Semester

Credit: 3

#### ***Title: AIT 072 Basic Waterworks Operation***

Schedule: Wednesdays, 6:30-9:30 p.m.

Starts: Aug. 26, 2002

Instructor: Ray Weller

Designed in cooperation with the Illinois Environmental Protection Agency and the Water Supply Operator Certification Advisory Board, covers water sources, pumpage, storage, distribution, chemical feeding, mathematics, water quality, chemistry and bacteriology.

### **Spring 2003**

#### ***Title: AIT 073 Intermediate Waterworks Operation***

Schedule: Wednesdays, 6:30-9:30 p.m.

Starts: Jan. 13, 2003

Instructor: Ray Weller

Second of the two course sequence, topics include filtration, aeration, ion exchange, softening, coagulation, lime softening and sedimentation.

### **Lincoln Trail College**

Route 3, Box 82A  
Robinson, Ill. 62454  
(618) 544-8657 ext. 1144  
Contact: John Arabatgis

No program

### **McHenry County College**

Route #14 and Lucas Road  
Crystal Lake, Ill. 60012  
815- 455-3700  
Contact: Helen Campbell

The college does not offer water supply/wastewater training programs, but instead has a cooperative agreement with the College of Lake County. Contact the college for information.

### **Moraine Valley Community College**

10900 S. 88th Ave., Room T-100  
Palos Hills, Ill. 60465  
708- 974-5735

Contact: David Jorgenson, instructions coordinator

The college does not offer water supply/wastewater treatment programs, but does offer classes in other environmental topics.

### **Morton College**

3801 S. Central Ave.  
Cicero, Ill. 60650  
708- 656-8000 ext. 280

Contact: Phyllis Welden, Dean, continuing education

This college does not offer water supply/wastewater training programs.

---

**Oakton Community College**

1600 E. Golf Rd.  
DesPlaines, Ill. 60016

This college does not offer water supply/wastewater training programs.

**Olive-Harvey College**

10001 S. Woodlawn Ave.  
Chicago, Ill. 60628

This college does not offer water supply/wastewater training programs.

**Olney Central College**

305 North West St.  
Olney, Ill. 62450  
618-395-4351  
Contact: Rita Ladner

This college does not offer water supply/wastewater training programs.

**Parkland College**

Business Development Center  
206A W. Anthony Drive  
217-351-2235 Ext. 14  
Contact: W. Gandolfi, Institute Manager  
No classes scheduled

**Prairie State College**

202 S. Halsted St.  
Chicago Heights, Ill. 60411  
708- 756-3110 ext. 3549  
Contact: Linda L. Moses, Director, adult education  
These course offerings are custom designed. The content and time frames are arranged to meet the needs of each group requesting training.

**Rend Lake College**

468 N. Ken Gray Parkway  
Ina, Ill. 62846  
618- 437-5321 ext. 258  
Contact: Barb Davenport  
Chairman, science/math department  
Courses are scheduled for interested groups; contact the college for more information.

**Richard J. Daley Community College**

7500 Pulaski Rd.  
Chicago, Ill. 60652  
312- 735-3000

This college does not offer water supply/wastewater training programs.

**Richland Community College**

One College Park  
Decatur, Ill. 62526  
217- 875-7211 ext. 558  
Contact: Cathy Sebok, extension coordinator

No information received for 2002/2003. Contact community college for additional information

**Rock Valley Community College**

3301 N. Mulford Rd.  
Rockford, Ill. 61101  
815-654-4250  
Contact: Renee Ilfano

This college does not offer water supply/wastewater training programs.

**Sauk Valley College**

173 Ill. Rt. 2  
Dixon, Ill. 61201  
815-288-5511  
Contact: Thomas Gospoarczyk,  
Dean, community services

This college does not offer water supply/wastewater training programs.

**Shawnee Community College**

P.O. Box 53  
Shawnee College Rd.  
Ullin, Ill. 62992  
(618) 634-9411 ext. 219  
Contact: Larry Choate, Dean,  
instructional services

The water supply/wastewater training program at this school is currently inactive.

**South Suburban College**

15800 S. State St.  
South Holland, Ill. 60473

This college does not offer water supply/wastewater training programs, but instead has a cooperative agreement with Prairie State College.

**Southeastern Illinois College**

Vienna Correctional Center  
Vienna, Ill. 62995  
618- 658-2211  
Contact: Stanley Jones

Southeastern Illinois College offers a full-time 36 week water/wastewater training program covering all aspects of operator training. The program is open to the general public. Individual courses for operators wanting certification or certification upgrade can be arranged.

**Southwestern Illinois College**

2500 Carlyle Road  
Belleville, Ill. 62221  
(Formerly Belleville Area College)

This college does not offer water supply/wastewater training programs.

**Spoon River College--Macomb Campus**

208 S. Johnson St.  
Macomb, Ill. 61455  
309- 837-5727  
Contact: Melissa Griswold, Dean,  
Community and Business Services

No information received for 2002-2003. Contact community college for additional information.

**Triton College**

2000 Fifth Avenue  
River Grove, Ill. 60171  
708- 456-0300 ext. 3767  
Contact: Wanda Manning, coordinator,  
Continuing Education for Allied Health

No information received for 2002-2003. Contact community college for additional information.

---

**Truman College**  
1145 W. Wilson Ave.  
Chicago, Ill. 60640

This college does not offer water supply/wastewater training programs.

**Wabash Valley College**  
2200 College Drive  
Mt. Carmel, Ill. 62863  
618- 262-8641

Contact: Wayne Heneger, Dean of Instruction

This college does not offer water supply/wastewater training programs

**Waubensee Community College**  
Rt. 47 at Harter Rd.  
Sugar Grove, Ill. 60554  
708- 466-4811 ext. 2319

Contact: Gregory Dlabach, Associate Dean for Technology, Math and Physical Sciences

No information received for 2002-2003. Contact community college for additional information.

**William Rainey Harper College**  
Algonquin and Roselle Rds.  
Palatine, Ill. 60067  
847-925-6300

No longer offers courses.

## PART III - OTHER TRAINING ACTIVITIES

### CORRESPONDENCE COURSES - ERTC

#### WASTEWATER COURSES

In order to increase the availability of wastewater operator training in Illinois, the ERTC has initiated a program whereby textbooks and grading services are provided by the ERTC. Continuing Education Units and IEPA Certification Points are awarded upon successful completion. The courses offered by ERTC are:

1. Operation of Wastewater Treatment Plant Vols. I, II, and Advanced
2. Industrial Treatment Vols. I and II
3. Operation and Maintenance of Wastewater Collection Systems Vols. I and II, all prepared by California State University, Sacramento.

Materials for the above include textbooks with objective tests at the end of chapter, along with blank test answer sheets.

Procedures: Each correspondence course allows you to proceed

at your own pace and to study the materials when and where you prefer. To complete the course:

1. study each lesson in the course;
2. complete the objective test at the end of each chapter;
3. return the completed test to the Correspondence Course Coordinator, Environmental Resources Training Center.

Upon successful completion of each course, the student receives a Certificate of Completion along with the appropriate number of CEUs.

#### WATER COURSES

The ERTC currently provides four self-study courses for Illinois water supply operators, supervisors and managers. Three courses are called Basic Water Works Operations, Intermediate Water Works Operations, and Advanced Water Works Operations.

These courses include a student manual, pretest, quizzes and a final

exam. The pretest and quizzes include answers. The ERTC will grade the final exam and provide notification of exam results.

Also, Fundamentals of Water Supply Operations is offered as a correspondence course. Topics are water and its sources, pumps, water chemistry, water treatment processes and plant administration.

A certification and CEUs are awarded upon completion.

#### How to Enroll

For information on course costs and how to enroll, contact the Correspondence Course Coordinator, Environmental Resources Training Center, Box 1075, Southern Illinois University, Edwardsville, Ill. 62026-1075 or call 618- 650-2030.

#### OTHER TRAINING ACTIVITIES

Water Supply Operator Organizations

**National:**

American Water Works Association  
Annual Conference  
June 15-19, 2003  
Anaheim, California

National Rural Water Association  
Annual Conference  
Oct. 6-9, 2002  
Spokane, Washington

**Statewide:**

Illinois Section American Water  
Works Association (ISAWWA)

1. Annual Conference: March 18-20, 2003, Springfield, Ill.
2. Small Systems, Oct. 23-24, 2002, Giant City State Park, Ill
3. Small Systems, Sept. 25-26, 2002, Dixon, Ill.

Illinois Potable Water Supply  
Operators (IPWSO) Conference  
Sept. 10-13, 2002  
Springfield, Ill.

Allerton House Conference for  
Water Utility Management  
Contact: Andy Kieser  
217- 352-7688

Illinois Rural Water Association  
3305 Kennedy Road  
Box 6049, Taylorville, Ill. 62568  
Contact: Loy McCart  
217- 787-2115  
Annual Conference  
Feb. 25-27, 2003  
Location: TBA

**Water Pollution Operator  
Organizations**

**National:**

Water Environment Federation  
Annual Conference  
Sept. 28-Oct. 2, 2002  
Chicago, Ill.

**Statewide:**

Illinois Association of Water  
Pollution Control Operators Annual  
Conference  
April 21-24, 2003  
Springfield, Ill.

Fall Regional Conferences  
Four locations, held during October

IWEA Conference

March 11-13, 2003  
Rockford, Ill.

**Other:**

IWPCA Safety Seminars  
The Illinois Water Pollution Control  
Association (IWPCA) sponsors safety  
seminars. Information can be  
obtained from:  
David Sullivan  
IWPCA Safety Committee Chairman  
Pontiac Sewer Dept.  
319 N. Main St.  
Pontiac, Ill. 61764



# Illinois Rural Water Association

## Tentative Training Schedule 2002

Place	Date	Topic	Field
Mt. Carmel	Aug. 7, 2002	Cross Connection Control	Water
Monticello	Aug. 21, 2002	Arsenic Treatment	Water
Bloomington	Aug. 21, 2002	Collection Systems II	Wastewater
East Peoria	Sept. 5, 2002	TBA	Water
Rock Falls	Sept. 25, 2002	Activated Sludge II	Wastewater
Decatur	Oct. 22-23, 2002	Emergency Preparedness	
Kankakee	Oct. 23, 2002	Lagoon Operations	Wastewater
Decatur	Nov. 13, 2002	TBA	Water
Starved Rock	Nov. 18-21, 2002	Certification Training	Both
Effingham	Nov. 27, 2002	Lagoon Operations	Wastewater
Carterville	Dec. 4, 2002	TBA	Water
Mt. Vernon	Dec. 11, 2002	Collection Systems I	Wastewater
E. St. Louis	Dec. 11-12, 2002	Emergency Preparedness	
Dixon	Jan. 8, 2003	TBA	Water
Jacksonville	Jan. 22, 2003	TBA	Water

**Please note that these are tentative schedules; dates and places may change.**

**The Illinois Rural Water Association [website www.ilrwa.org](http://www.ilrwa.org) will reflect the latest changes as well as current training for which to register.**

**Call the office at 217-287-2115 for any questions. Thank you.**

# INFORMATION REQUEST FORM

*This form is for your convenience to register for a course or to request additional information about the course. Because the form is general, it may not satisfy all course registration requirements for the different groups for which we are providing water supply and wastewater treatment operator training. You may be sent additional forms by the educational institution and asked to complete and return them.*

## ***Read and Follow the Instructions Carefully***

1. Enter the name and address of the contact person given in the catalog for the course that you are interested in.
2. List the course(s) you want information on in the spaces provided.
3. Complete the spaces for your name, address and telephone number. Print or type.
4. Complete a separate form for each educational institution. Do not list courses from two different institutions on the same form.

## **Water Supply and Wastewater Training Course Information Request Form**

### ***Mail to:***

Name of Contact Person: \_\_\_\_\_

Name of Organization: \_\_\_\_\_

Street \_\_\_\_\_ City \_\_\_\_\_ State \_\_\_\_\_ Zip \_\_\_\_\_

### ***I am interested in:***

Course Number \_\_\_\_\_ Course Title \_\_\_\_\_ Course Location \_\_\_\_\_

### ***Please send additional information necessary to complete my registration for these courses to:***

Name \_\_\_\_\_ Phone \_\_\_\_\_

Street \_\_\_\_\_ City \_\_\_\_\_ State \_\_\_\_\_ Zip \_\_\_\_\_

### **Digester/Over the Spillway**

Published by the State of Illinois  
Environmental Protection Agency  
Box 19276  
Springfield, Ill. 62794-9276

***CHECK THIS OUT  
RUSTY  
PRSRT STD  
U.S. Postage Paid***