

## SOIL MAPS

Soil Map—Stephenson County, Illinois  
(MEIER -- AEBLY)

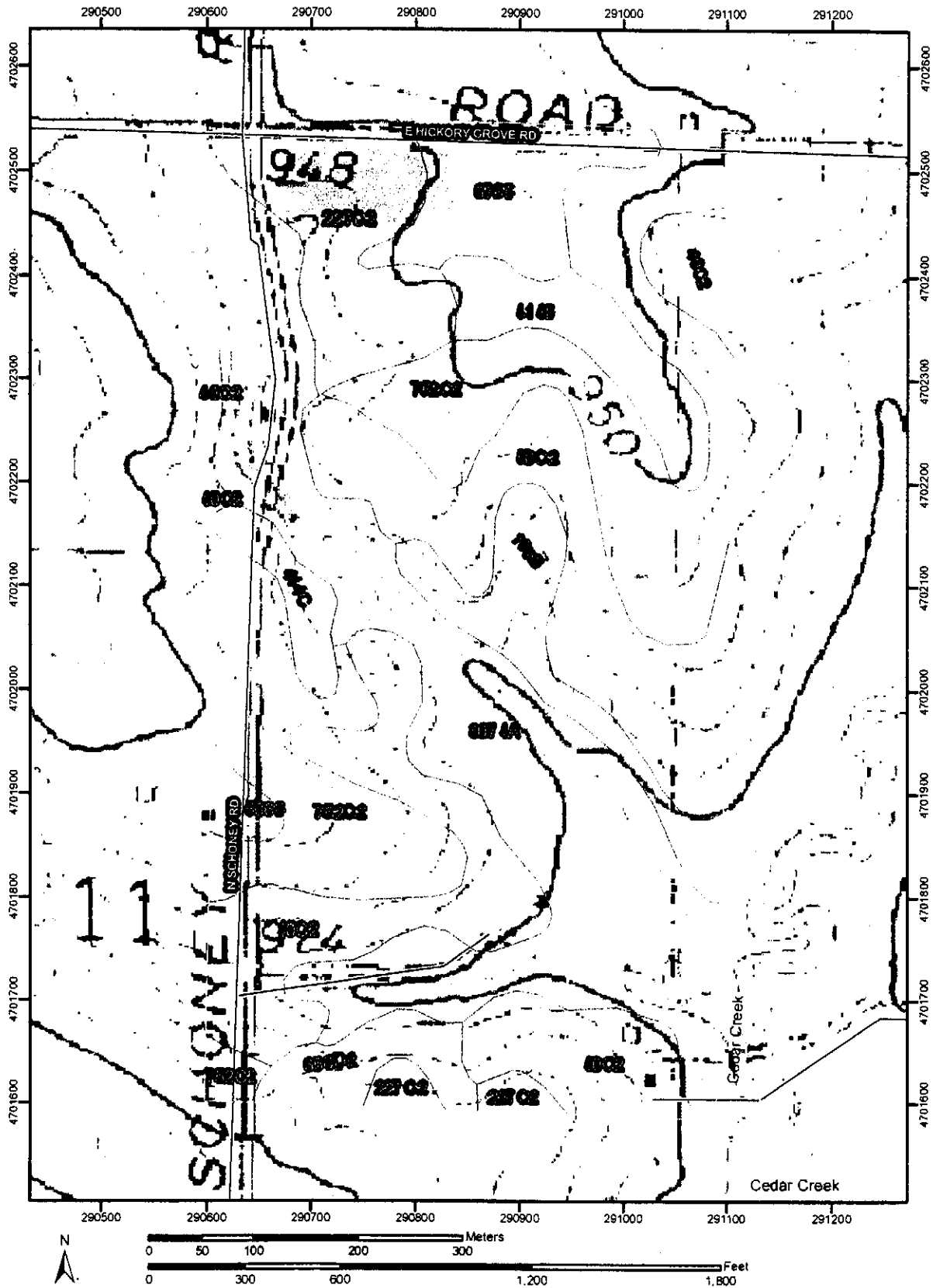


Natural Resources  
Conservation Service

Web Soil Survey 2.0  
National Cooperative Soil Survey

3/19/2008  
Page 1 of 3

Soil Map—Stephenson County, Illinois  
(MEIER - AEBLY)



Natural Resources  
Conservation Service

Web Soil Survey 2.0  
National Cooperative Soil Survey

3/19/2008  
Page 1 of 3

## Map Unit Legend

Stephenson County, Illinois (IL177)			
Map Unit Symbol	Map Unit Name	Acres in AOI	Percent of AOI
40C2	Dodgeville silt loam, 5 to 10 percent slopes, eroded	20.8	25.4%
105B	Batavia silt loam, 2 to 5 percent slopes	5.0	6.1%
227C2	Argyle silt loam, 5 to 10 percent slopes, eroded	3.9	4.8%
414B	Myrtle silt loam, 2 to 5 percent slopes	4.5	5.5%
414C	Myrtle silt loam, 5 to 10 percent slopes	1.6	2.0%
506B	Hitt silt loam, 2 to 5 percent slopes	0.3	0.4%
675B	Greenbush silt loam, 2 to 5 percent slopes	5.0	6.1%
752C2	Oneco silt loam, 5 to 10 percent slopes, eroded	21.1	25.7%
8074A	Radford silt loam, 0 to 2 percent slopes, occasionally flooded	19.6	23.9%
Totals for Area of Interest (AOI)		81.9	100.0%

Soil Map-Stephenson County, Illinois  
(MEIER - HOME/CAPS)

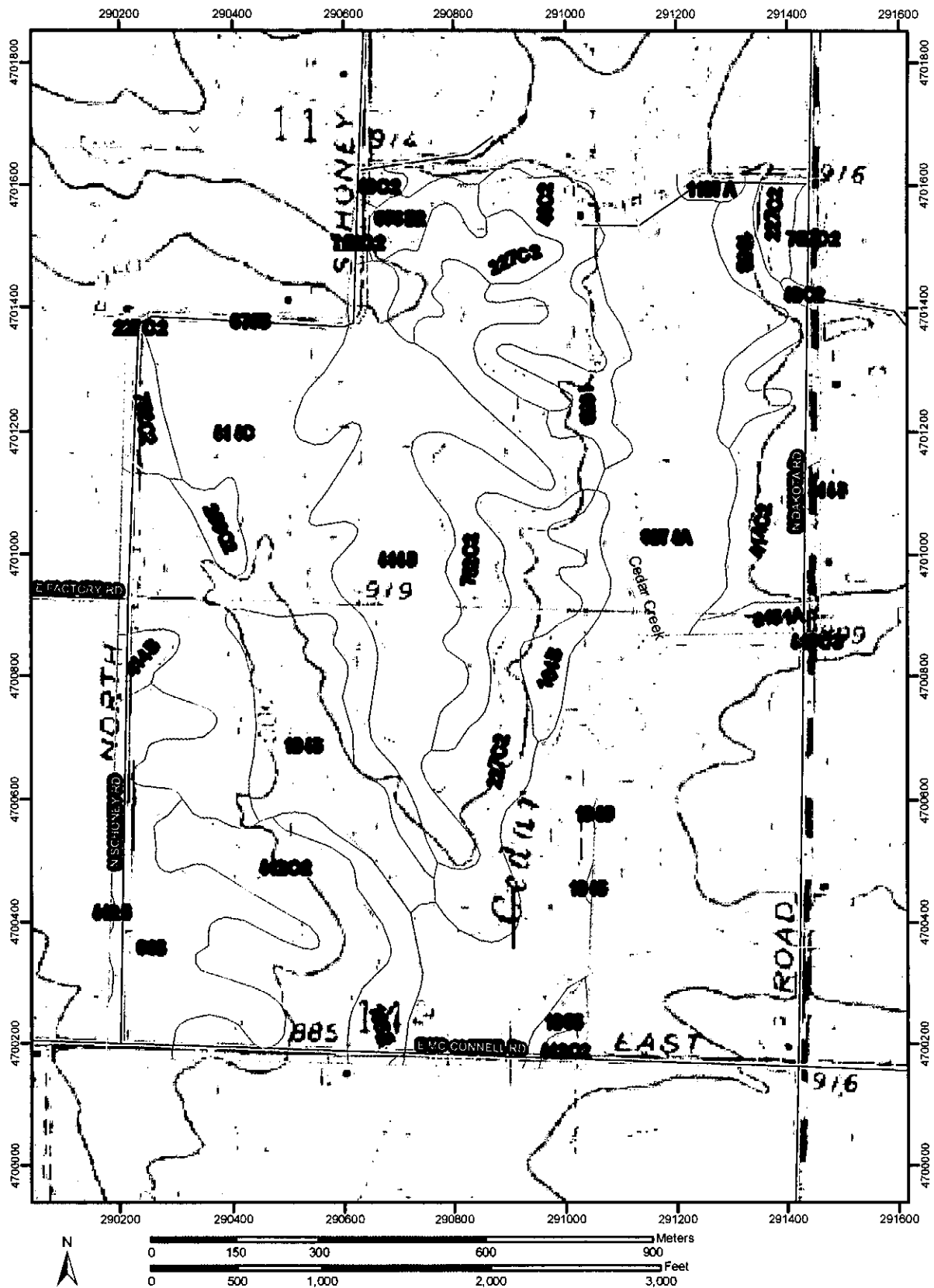


Natural Resources  
Conservation Service

Web Soil Survey 2.0  
National Cooperative Soil Survey

3/19/2008  
Page 1 of 3

Soil Map-Stephenson County, Illinois  
(MEIER - HOME/CAPS)



Natural Resources  
Conservation Service

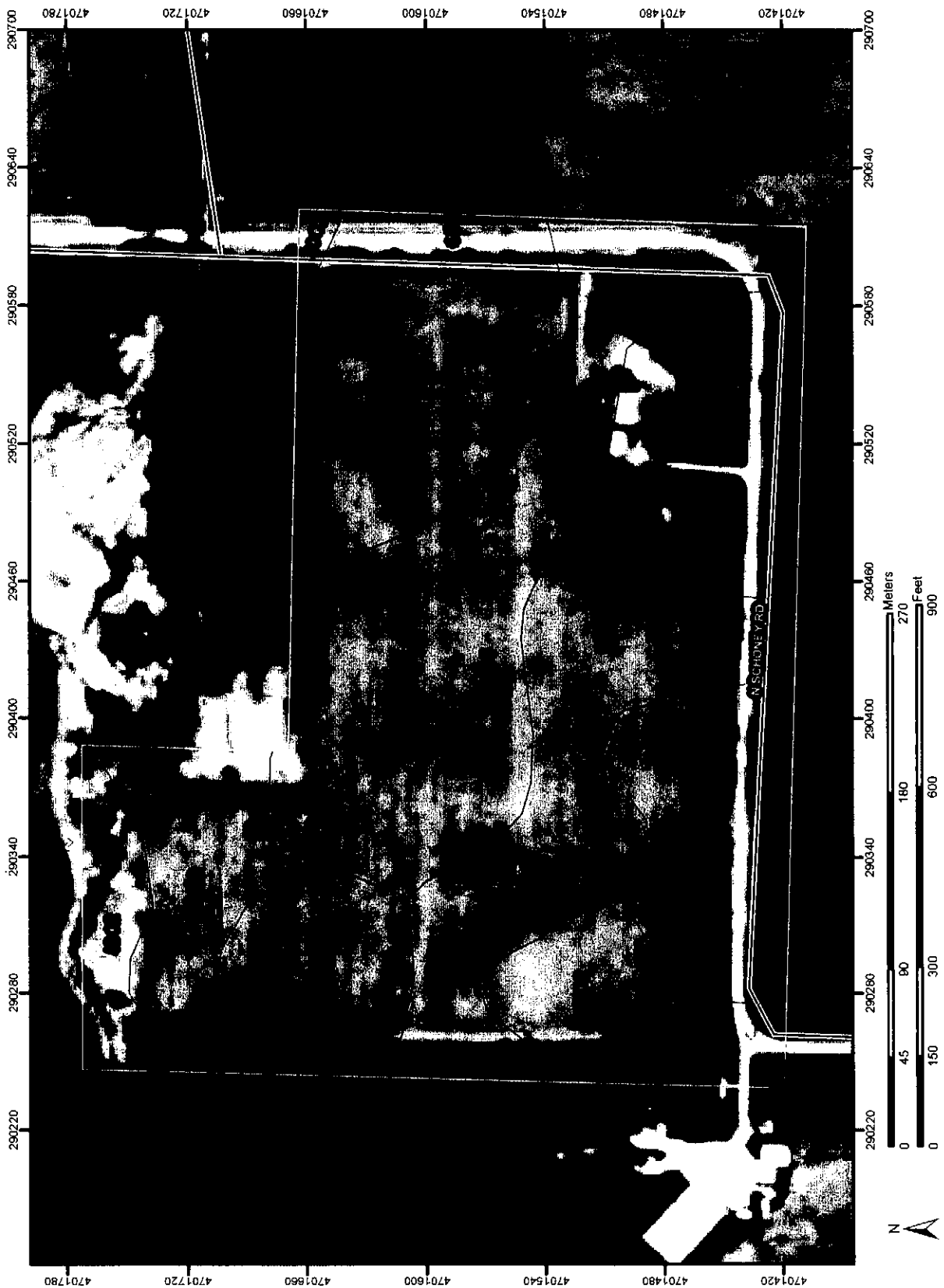
Web Soil Survey 2.0  
National Cooperative Soil Survey

3/19/2008  
Page 1 of 3

## Map Unit Legend

Stephenson County, Illinois (IL177)			
Map Unit Symbol	Map Unit Name	Acres in AOI	Percent of AOI
40C2	Dodgeville silt loam, 5 to 10 percent slopes, eroded	15.2	3.8%
86B	Osco silt loam, 2 to 5 percent slopes	26.8	6.7%
104B	Virgil silt loam, 2 to 5 percent slopes	27.8	7.0%
105B	Batavia silt loam, 2 to 5 percent slopes	25.0	6.3%
227C2	Argyle silt loam, 5 to 10 percent slopes, eroded	33.8	8.5%
259C2	Assumption silt loam, 5 to 10 percent slopes, eroded	3.0	0.8%
410C3	Woodbine silty clay loam, 5 to 10 percent slopes, severely eroded	0.0	0.0%
412B	Ogle silt loam, 2 to 5 percent slopes	0.1	0.0%
412C2	Ogle silt loam, 5 to 10 percent slopes, eroded	28.1	7.0%
414B	Myrtle silt loam, 2 to 5 percent slopes	45.6	11.4%
414C	Myrtle silt loam, 5 to 10 percent slopes	61.0	15.3%
414C2	Myrtle silt loam, 5 to 10 percent slopes, eroded	15.9	4.0%
656D2	Octagon silt loam, 6 to 12 percent slopes, eroded	4.1	1.0%
675B	Greenbush silt loam, 2 to 5 percent slopes	0.2	0.1%
752C2	Oneco silt loam, 5 to 10 percent slopes, eroded	30.7	7.7%
1107A	Sawmill silty clay loam, undrained, 0 to 2 percent slopes, frequently flooded	1.3	0.3%
8074A	Radford silt loam, 0 to 2 percent slopes, occasionally flooded	77.9	19.5%
8451A	Lawson silt loam, 0 to 2 percent slopes, occasionally flooded	2.7	0.7%
Totals for Area of Interest (AOI)		399.2	100.0%

Soil Map—Stephenson County, Illinois  
(MEIER -- HOME 4)



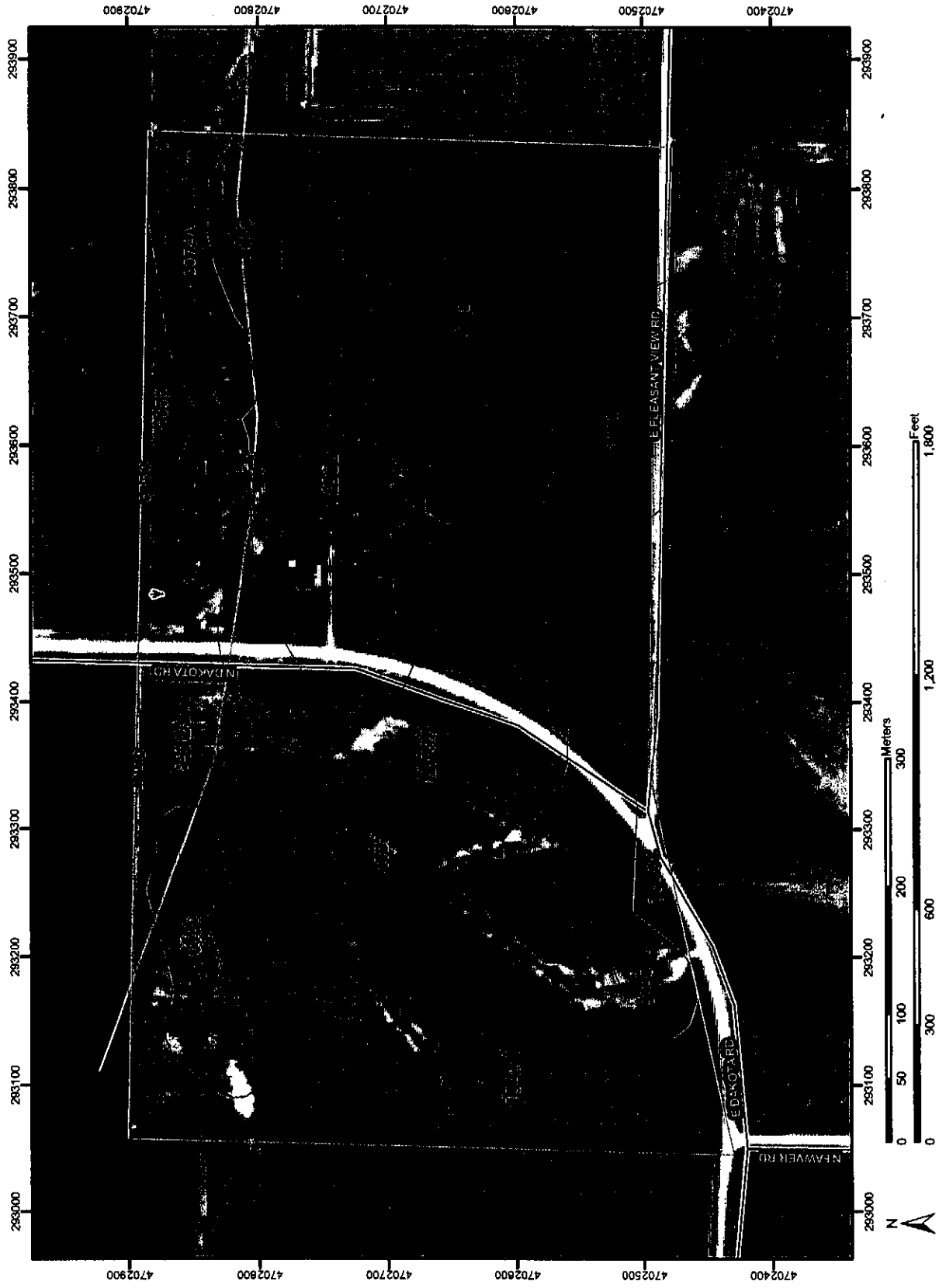




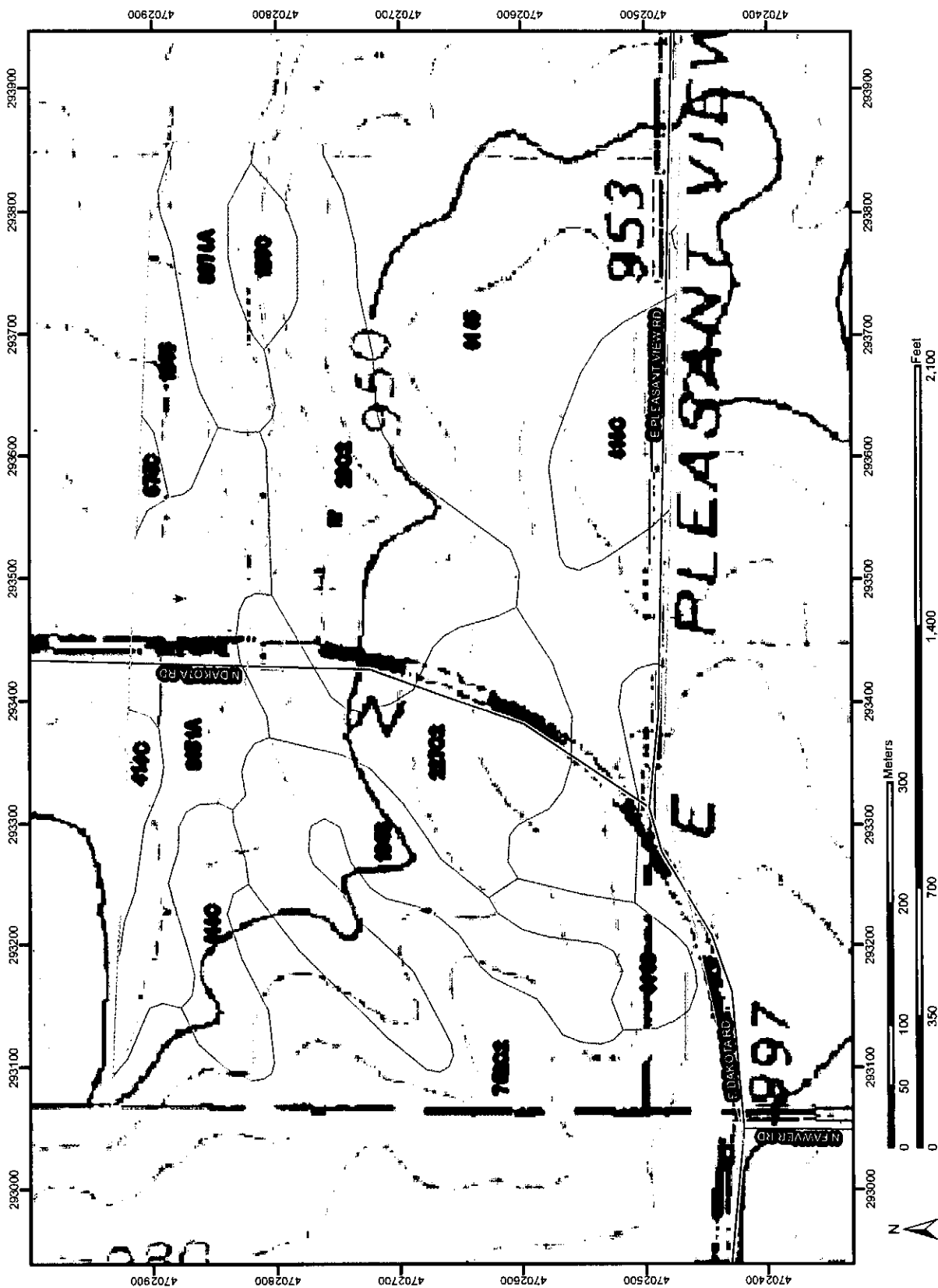
## Map Unit Legend

Stephenson County, Illinois (IL177)			
Map Unit Symbol	Map Unit Name	Acres in AOI	Percent of AOI
40C2	Dodgeville silt loam, 5 to 10 percent slopes, eroded	1.3	4.2%
227C2	Argyle silt loam, 5 to 10 percent slopes, eroded	2.6	8.3%
414B	Myrtle silt loam, 2 to 5 percent slopes	7.7	24.3%
414C	Myrtle silt loam, 5 to 10 percent slopes	8.9	28.1%
656D2	Oclagon silt loam, 6 to 12 percent slopes, eroded	0.1	0.2%
675B	Greenhush silt loam, 2 to 5 percent slopes	4.3	13.8%
752C2	Oneco silt loam, 5 to 10 percent slopes, eroded	6.7	21.2%
Totals for Area of Interest (AOI)		31.6	100.0%

Soil Map--Stephenson County, Illinois  
(MEIER -- MESSMAN'S)



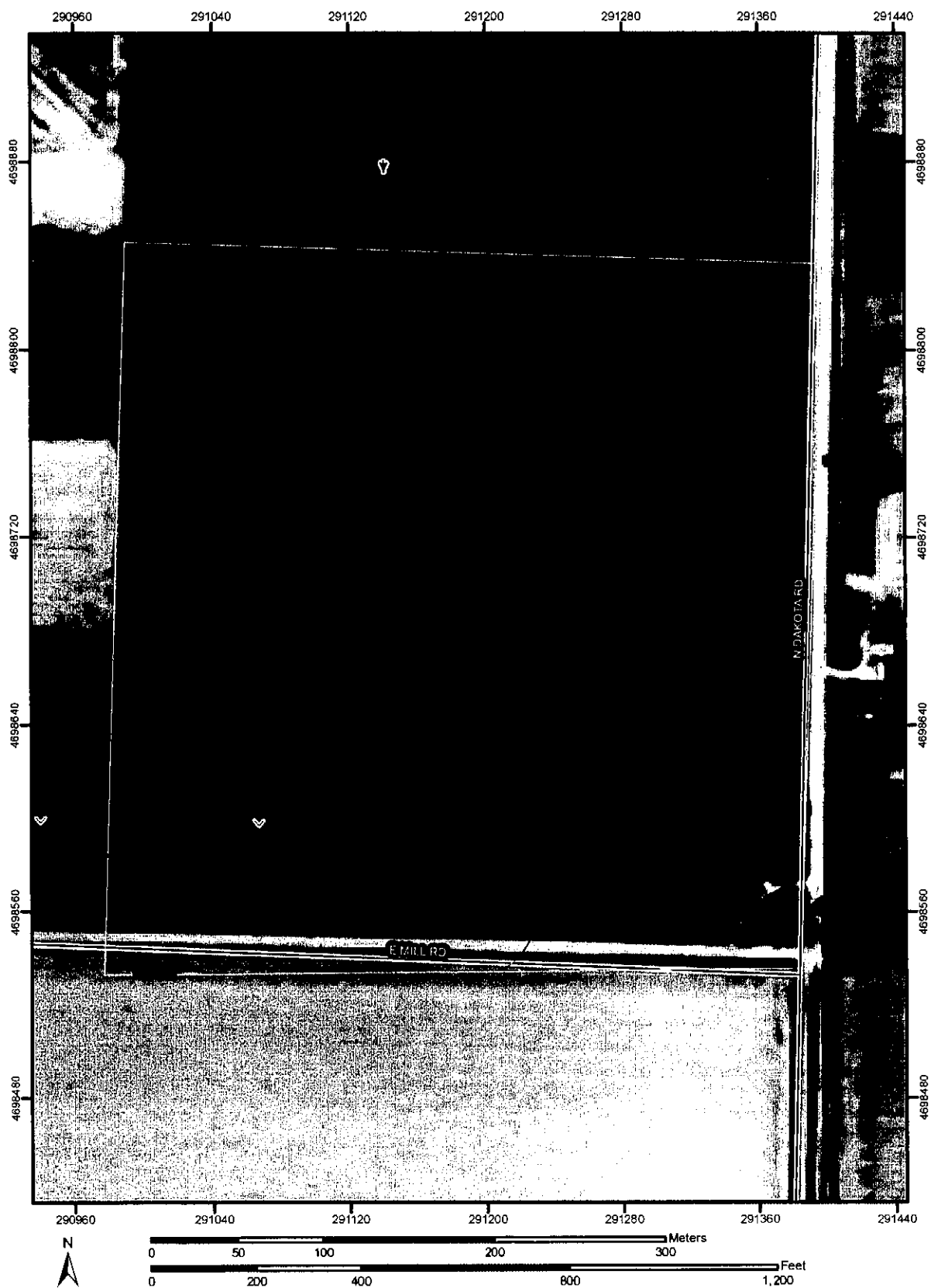
Soil Map—Stephenson County, Illinois  
(MESSMAN'S)



## Map Unit Legend

Stephenson County, Illinois (IL-177)			
Map Unit Symbol	Map Unit Name	Area in AOI	Percent of AOI
29C2	Dubuque silt loam, 5 to 10 percent slopes, eroded	11.2	13.8%
105B	Batavia silt loam, 2 to 5 percent slopes	9.2	11.4%
105C	Batavia silt loam, 5 to 10 percent slopes	1.5	1.8%
227C2	Argyle silt loam, 5 to 10 percent slopes, eroded	7.8	9.7%
414B	Myrtle silt loam, 2 to 5 percent slopes	19.8	24.4%
414C	Myrtle silt loam, 5 to 10 percent slopes	8.8	10.9%
675C	Greenbush silt loam, 5 to 10 percent slopes	0.0	0.0%
752C2	Oneco silt loam, 5 to 10 percent slopes, eroded	13.6	16.7%
8074A	Radford silt loam, 0 to 2 percent slopes, occasionally flooded	2.9	3.5%
8451A	Lawson silt loam, 0 to 2 percent slopes, occasionally flooded	6.2	7.7%
Totals for Area of Interest (AOI)		81.0	100.0%

Soil Map-Stephenson County, Illinois  
(MEIER FARMS - STANLEY'S)

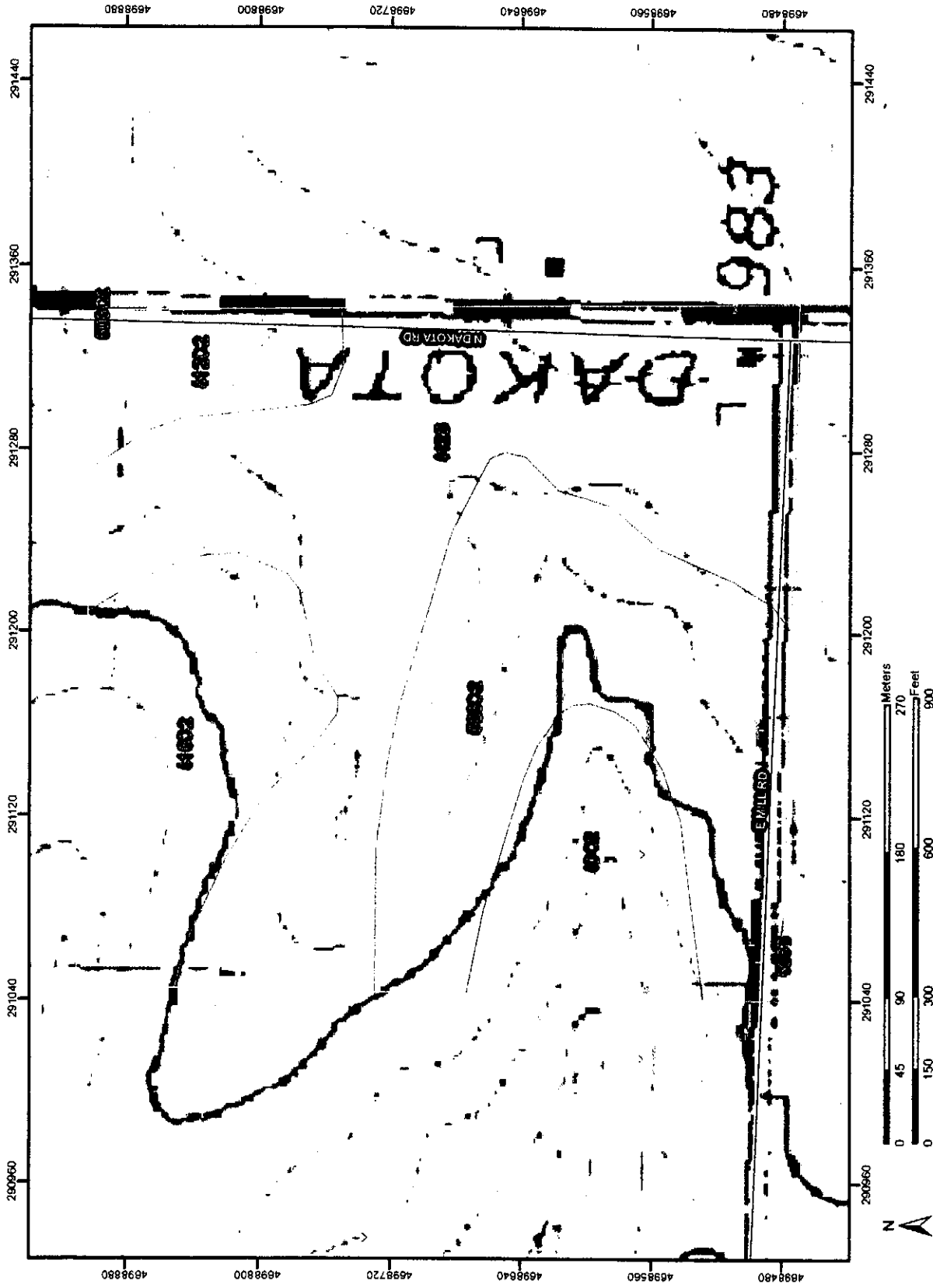


Natural Resources  
Conservation Service

Web Soil Survey 2.0  
National Cooperative Soil Survey

3/19/2008  
Page 1 of 3

Soil Map-Stephenson County, Illinois  
(MEIER - STANLEY'S)







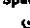


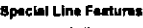



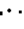









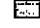
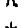


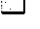

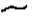



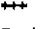














## Map Unit Legend

Stephenson County, Illinois (IL177)			
Map Unit Symbol	Map Unit Name	Acres in AOI	Percent of AOI
40C2	Dodgeville silt loam, 5 to 10 percent slopes, eroded	4.6	10.8%
412B	Ogle silt loam, 2 to 5 percent slopes	16.7	39.4%
412C2	Ogle silt loam, 5 to 10 percent slopes, eroded	2.2	5.1%
416C2	Durand silt loam, 5 to 10 percent slopes, eroded	6.7	15.7%
506B	Hitt silt loam, 2 to 5 percent slopes	0.0	0.1%
506C2	Hitt silt loam, 5 to 10 percent slopes, eroded	12.2	28.9%
Totals for Area of Interest (AOI)		42.4	100.0%



Soil Map-Stephenson County, Illinois  
(MEIER FARMS - STANLEY'S)

# MAP LEGEND

	Area of Interest (AOI)		Very Stony Spot
	Soil Map Units		Wet Spot
	Special Point Features		Other
	Blowout		Special Line Features
	Borrow Pit		Gully
	Clay Spot		Short Steep Slope
	Closed Depression		Other
	Gravel Pit		Political Features
	Gravelly Spot		Municipalities
	Landfill		Cities
	Lava Flow		Urban Areas
	Marsh		Water Features
	Mine or Quarry		Oceans
	Miscellaneous Water		Streams and Canals
	Perennial Water		Transportation
	Rock Outcrop		Rails
	Saline Spot		Roads
	Sandy Spot		Interstate Highways
	Severely Eroded Spot		US Routes
	Sinkhole		State Highways
	Slide or Slip		Local Roads
	Sodic Spot		Other Roads
	Spoil Area		
	Stony Spot		

# MAP INFORMATION

Original soil survey map sheets were prepared at publication scale. Viewing scale and printing scale, however, may vary from the original. Please rely on the bar scale on each map sheet for proper map measurements.

Source of Map: Natural Resources Conservation Service  
Web Soil Survey URL: <http://websoilsurvey.nrcs.usda.gov>  
Coordinate System: UTM Zone 18N

This product is generated from the USDA-NRCS certified data as of the version date(s) listed below.

Soil Survey Area: Stephenson County, Illinois  
Survey Area Data: Version 2, Sep 12, 2006

Date(s) aerial images were photographed: 1999

The orthophoto or other base map on which the soil lines were compiled and digitized probably differs from the background imagery displayed on these maps. As a result, some minor shifting of map unit boundaries may be evident.