

# North Fork Pork LLC

## Individual Fields Soil Map



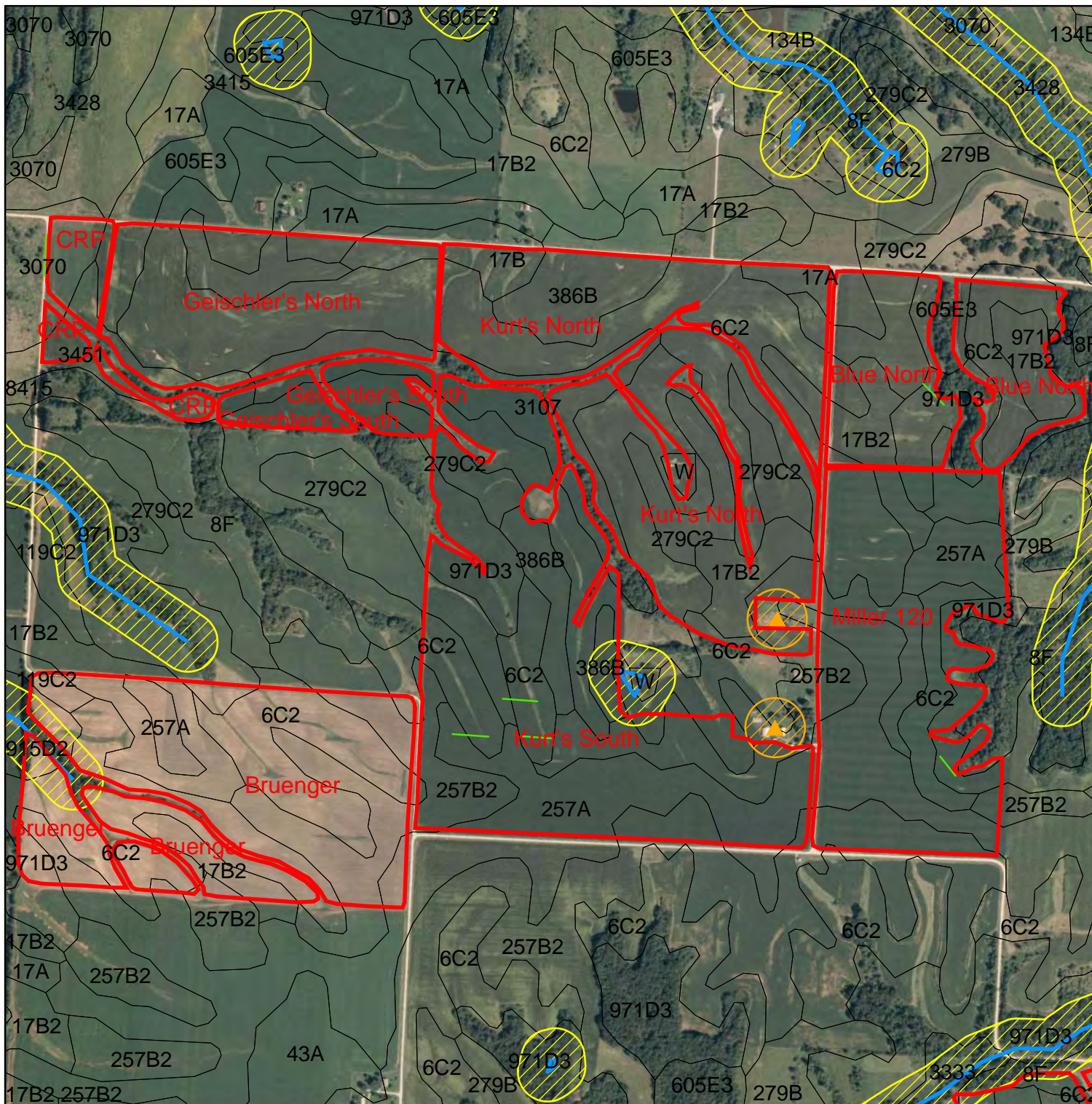
### Legend

- Fields
- Water
- Water Buffer
- Well
- Well Buffer
- Grass Waterways
- Livestock Facilities

1,800

Feet

 **Frank & West**  
Environmental Engineers, Inc.  
7226 N. State Route 29 Phone: 217/487-7686  
Springfield, IL 62707 Fax: 217/487-7687





# North Fork Pork LLC

## Individual Fields Soil Map



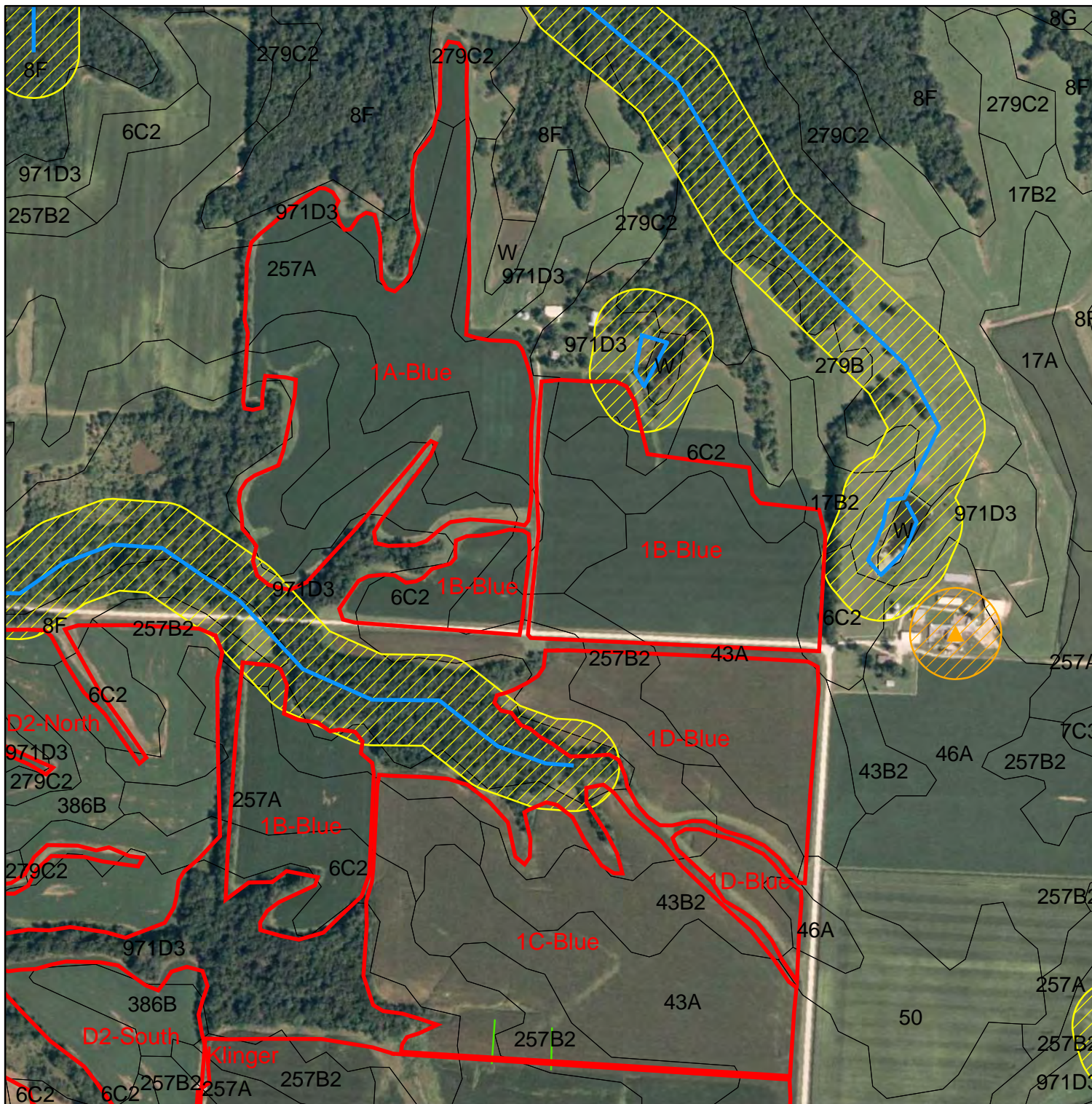
### Legend

- Fields
- Water
- Water Buffer
- Well
- Well Buffer
- Grass Waterways
- Livestock Facilities

1,200

Feet

 **Frank & West**  
Environmental Engineers, Inc.  
7226 N. State Route 29 Phone: 217/487-7686  
Springfield, IL 62707 Fax: 217/487-7687



**Individual Field Information****North Fork Pork, LLC**

<b>Field Name:</b>	<u>1A-Blue</u>	<b>Total Acres</b>	38.0
		<b>Non-Spreadable Acres</b>	0.3
<b>Township</b>	St. Albans	<b>Total Spreadable Acres</b>	37.7
<b>Section</b>	4		
<b>FSA Farm #</b>	782	<b>Predominant Soil Type:</b>	257A Clarksdale silt loam, 0-2% slopes
<b>FSA Tract #</b>	3394	<b>P test</b>	--
<b>FSA Field #'s</b>	3,5	<b>K test</b>	--

**Individual Field Application & Nutrients**

<b>Crop needs</b>	<b>Year</b>	<b>2009</b>	<b>2010</b>	<b>2011</b>	<b>2012</b>	<b>2013</b>	<b>2014</b>
Crop		Beans	Corn	Beans	Wheat	Corn	Beans
Yield	(bu/acre OR ton/acre)		180	60	80	180	60
N needed (lbs/ac)	lbs/ac		216	0	80	216	0
- Legume N credits	(lb/acre)		40	0	40	0	0
- Commercial fertilizer N credits	(lb/acre)						
- Manure N carryover credit **	(lb/acre)		0.0	27.3	13.7	6.8	30.0
Total N Credits	(lb/acre)		40.0	27.3	53.7	6.8	30.0
Crop N Need Minus Credits	(lb/acre)		176.0	-27.3	26.3	209.2	-30.0
Maintenance P needed *	(lb/acre)		77.4	51.0	72.0	77.4	51.0
Maintenance K needed *	(lb/acre)		50.4	78.0	24.0	50.4	78.0

\* Maintenance P & K needed are listed for calculation & uptake purposes only

\*\* Manure N carryover credit = Previous years' apps \* Org N \* Mineralization factor

North Fork Pork, LLC							
1A-Blue		2009	2010	2011	2012	2013	2014
Manure Application		Beans	Corn	Beans	Wheat	Corn	Beans
Storage			Deep Pit			Deep Pit	
Application Method			Inject			Inject	
Storage/Application Method			LINE1			LINE1	
1st Year Available N ( $Am-N * N$ <i>retention due to app method</i> ) + ( $OrgN$ $* .35$ )	(lb/1000 gal)		17.48			17.48	
N App Rate ( $Crop N Need / 1st Yr Av N$ )	(1000 gal/acre)		10.1			12.0	
P App Rate ( $Maintenance P / P in analysis$ )	(1000 gal/acre)		9.80			9.80	
Apply at Prate or Nrate?			Nrate			Prate	
<b>Application Rate to Use</b>	<b>(1000 gal)</b>	<b>0.0</b>	<b>10.1</b>	<b>0.0</b>	<b>0.0</b>	<b>9.8</b>	<b>0.0</b>
Total application ( $App Rate * Spreadable Acres$ )	(gallons)		379,610			369,365	
N applied ( $1st Year AvN * App rate$ )	(lb/acre)		176			171	
P applied ( $P in manure * App rate$ )	(lb/acre)		176			77	
K applied ( $K in manure * App rate$ )	(lb/acre)		80			138	
<b>Additional N Needed</b>	<b>(lb/acre)</b>		<b>0</b>	<b>-27</b>	<b>26</b>	<b>38</b>	<b>-30</b>
Acres Covered	(acres)		37.7	0.0	0.0	37.7	0.0

**Individual Field Information****North Fork Pork, LLC**

<b>Field Name:</b>	<u>1B-Blue</u>	<b>Total Acres</b>	43.3
		<b>Non-Spreadable Acres</b>	1.0
<b>Township</b>	St. Albans	<b>Total Spreadable Acres</b>	42.3
<b>Section</b>	4,9		
<b>FSA Farm #</b>	782	<b>Predominant Soil Type:</b>	43A Ipava silt loam, 0-2% slopes
<b>FSA Tract #</b>	3394	<b>P test</b>	--
<b>FSA Field #'s</b>	6,7,10	<b>K test</b>	--

**Individual Field Application & Nutrients**

<b>Crop needs</b>	<b>Year</b>	<b>2009</b>	<b>2010</b>	<b>2011</b>	<b>2012</b>	<b>2013</b>	<b>2014</b>
Crop		Beans	Corn	Beans	Corn	Beans	Corn
Yield	(bu/acre OR ton/acre)		180	60	180	60	180
N needed (lbs/ac)	lbs/ac		216	0	216	0	216
- Legume N credits	(lb/acre)		40	0	40	0	40
- Commercial fertilizer N credits	(lb/acre)						
- Manure N carryover credit **	(lb/acre)		0.0	0.0	0.0	26.6	13.3
Total N Credits	(lb/acre)		40.0	0.0	40.0	26.6	53.3
Crop N Need Minus Credits	(lb/acre)		176.0	0.0	176.0	-26.6	162.7
Maintenance P needed *	(lb/acre)		77.4	51.0	77.4	51.0	77.4
Maintenance K needed *	(lb/acre)		50.4	78.0	50.4	78.0	50.4

\* Maintenance P & K needed are listed for calculation & uptake purposes only

\*\* Manure N carryover credit = Previous years' apps \* Org N \* Mineralization factor

North Fork Pork, LLC							
1B-Blue		2009	2010	2011	2012	2013	2014
Manure Application		Beans	Corn	Beans	Corn	Beans	Corn
Storage					Deep Pit		Deep Pit
Application Method					Inject		Inject
Storage/Application Method					LINE1		LINE1
1st Year Available N ( $Am-N * N$ <i>retention due to app method</i> ) + ( $OrgN$ $* .35$ )	(lb/1000 gal)				17.48		17.48
N App Rate ( $Crop N Need / 1st Yr Av N$ )	(1000 gal/acre)				10.1		9.3
P App Rate ( $Maintenance P / P in analysis$ )	(1000 gal/acre)				9.80		9.80
Apply at Prate or Nrate?					Prate		Prate
<b>Application Rate to Use</b>	<b>(1000 gal)</b>	<b>0.0</b>	<b>0.0</b>	<b>0.0</b>	<b>9.8</b>	<b>0.0</b>	<b>9.8</b>
Total application ( $App Rate * Spreadable Acres$ )	(gallons)				414,433		414,433
N applied ( $1st Year AvN * App rate$ )	(lb/acre)				171		171
P applied ( $P in manure * App rate$ )	(lb/acre)				77		77
K applied ( $K in manure * App rate$ )	(lb/acre)				138		138
<b>Additional N Needed</b>	<b>(lb/acre)</b>		<b>176</b>	<b>0</b>	<b>5</b>	<b>-27</b>	<b>-9</b>
Acres Covered	(acres)		0.0	0.0	42.3	0.0	42.3

**Individual Field Information**

**North Fork Pork, LLC**

<b>Field Name:</b>	<u>1C-Blue</u>	<b>Total Acres</b>	41.2
		<b>Non-Spreadable Acres</b>	0.4
<b>Township</b>	St. Albans	<b>Total Spreadable Acres</b>	40.8
<b>Section</b>	9		
<b>FSA Farm #</b>	782	<b>Predominant Soil Type:</b>	43A Ipava silt loam, 0-2% slopes
<b>FSA Tract #</b>	3394	<b>P test</b>	--
<b>FSA Field #'s</b>	13	<b>K test</b>	--

**Individual Field Application & Nutrients**

<b>Crop needs</b>	<b>Year</b>	<b>2009</b>	<b>2010</b>	<b>2011</b>	<b>2012</b>	<b>2013</b>	<b>2014</b>
Crop		Corn	Beans	Corn	Beans	Corn	Beans
Yield	(bu/acre OR ton/acre)		60	200	60	200	60
N needed (lbs/ac)	lbs/ac		0	240	0	240	0
- Legume N credits	(lb/acre)		0	40	0	40	0
- Commercial fertilizer N credits	(lb/acre)						
- Manure N carryover credit **	(lb/acre)		27.1	13.6	36.3	18.2	36.9
Total N Credits	(lb/acre)		27.1	53.6	36.3	58.2	36.9
Crop N Need Minus Credits	(lb/acre)		-27.1	186.4	-36.3	181.8	-36.9
Maintenance P needed *	(lb/acre)		51.0	86.0	51.0	86.0	51.0
Maintenance K needed *	(lb/acre)		78.0	56.0	78.0	56.0	78.0

\* Maintenance P & K needed are listed for calculation & uptake purposes only

\*\* Manure N carryover credit = Previous years' apps \* Org N \* Mineralization factor

North Fork Pork, LLC							
1C-Blue		2009	2010	2011	2012	2013	2014
Manure Application		Corn	Beans	Corn	Beans	Corn	Beans
Storage		Deep Pit		Deep Pit		Deep Pit	
Application Method		Inject		Inject		Inject	
Storage/Application Method		LINE1		LINE1		LINE1	
1st Year Available N ( $Am-N * N$ <i>retention due to app method</i> ) + ( $OrgN$ $* .35$ )	(lb/1000 gal)			17.48		17.48	
N App Rate ( $Crop N Need / 1st Yr Av N$ )	(1000 gal/acre)			10.7		10.4	
P App Rate ( $Maintenance P / P in analysis$ )	(1000 gal/acre)			10.89		10.89	
Apply at Prate or Nrate?				Prate		Prate	
<b>Application Rate to Use</b>	<b>(1000 gal)</b>	<b>10.0</b>	<b>0.0</b>	<b>10.9</b>	<b>0.0</b>	<b>10.9</b>	<b>0.0</b>
Total application ( $App Rate * Spreadable Acres$ )	(gallons)			444,152		444,152	
N applied ( $1st Year AvN * App rate$ )	(lb/acre)			190		190	
P applied ( $P in manure * App rate$ )	(lb/acre)			86		86	
K applied ( $K in manure * App rate$ )	(lb/acre)			153		153	
<b>Additional N Needed</b>	<b>(lb/acre)</b>		<b>-27</b>	<b>-4</b>	<b>-36</b>	<b>-8</b>	<b>-37</b>
Acres Covered	(acres)		0.0	40.8	0.0	40.8	0.0



**Individual Field Information**

**North Fork Pork, LLC**

<b>Field Name:</b>	<u>1D-Blue</u>	<b>Total Acres</b>	22.6
		<b>Non-Spreadable Acres</b>	1.4
<b>Township</b>	St. Albans	<b>Total Spreadable Acres</b>	21.2
<b>Section</b>	9		
<b>FSA Farm #</b>	782	<b>Predominant Soil Type:</b>	43A Ipava silt loam, 0-2% slopes
<b>FSA Tract #</b>	3394	<b>P test</b>	--
<b>FSA Field #'s</b>	14,15,9	<b>K test</b>	--

**Individual Field Application & Nutrients**

<b>Crop needs</b>	<b>Year</b>	<b>2009</b>	<b>2010</b>	<b>2011</b>	<b>2012</b>	<b>2013</b>	<b>2014</b>
Crop		Beans	Beans	Corn	Beans	Corn	Beans
Yield	(bu/acre OR ton/acre)		60	200	60	200	60
N needed (lbs/ac)	lbs/ac		0	240	0	240	0
- Legume N credits	(lb/acre)		40	40	0	40	0
- Commercial fertilizer N credits	(lb/acre)						
- Manure N carryover credit **	(lb/acre)		0.0	0.0	29.5	14.8	36.9
Total N Credits	(lb/acre)		40.0	40.0	29.5	54.8	36.9
Crop N Need Minus Credits	(lb/acre)		-40.0	200.0	-29.5	185.2	-36.9
Maintenance P needed *	(lb/acre)		51.0	86.0	51.0	86.0	51.0
Maintenance K needed *	(lb/acre)		78.0	56.0	78.0	56.0	78.0

\* Maintenance P & K needed are listed for calculation & uptake purposes only

\*\* Manure N carryover credit = Previous years' apps \* Org N \* Mineralization factor

North Fork Pork, LLC							
1D-Blue		2009	2010	2011	2012	2013	2014
Manure Application		Beans	Beans	Corn	Beans	Corn	Beans
Storage				Deep Pit		Deep Pit	
Application Method				Inject		Inject	
Storage/Application Method				LINE1		LINE1	
1st Year Available N ( $Am-N * N$ retention due to app method) + ( $OrgN * .35$ )	(lb/1000 gal)			17.48		17.48	
N App Rate ( $Crop N Need / 1st Yr Av N$ )	(1000 gal/acre)			11.4		10.6	
P App Rate ( $Maintenance P / P in analysis$ )	(1000 gal/acre)			10.89		10.89	
Apply at Prate or Nrate?				Prate		Prate	
<b>Application Rate to Use</b>	<b>(1000 gal)</b>	<b>0.0</b>	<b>0.0</b>	<b>10.9</b>	<b>0.0</b>	<b>10.9</b>	<b>0.0</b>
Total application ( $App Rate * Spreadable Acres$ )	(gallons)			230,785		230,785	
N applied ( $1st Year AvN * App rate$ )	(lb/acre)			190		190	
P applied ( $P in manure * App rate$ )	(lb/acre)			86		86	
K applied ( $K in manure * App rate$ )	(lb/acre)			153		153	
<b>Additional N Needed</b>	<b>(lb/acre)</b>		<b>-40</b>	<b>10</b>	<b>-30</b>	<b>-5</b>	<b>-37</b>
Acres Covered	(acres)		0.0	21.2	0.0	21.2	0.0

**Individual Field Information**

**North Fork Pork, LLC**

<b>Field Name:</b>	<u>North Blue</u>	<b>Total Acres</b>	38.5
		<b>Non-Spreadable Acres</b>	0.0
<b>Township</b>	St. Albans	<b>Total Spreadable Acres</b>	38.5
<b>Section</b>	5		
<b>FSA Farm #</b>	782	<b>Predominant Soil Type:</b>	17B2 Keomah silt loam, 2-5% slopes
<b>FSA Tract #</b>	3394	<b>P test</b>	--
<b>FSA Field #'s</b>	16,17	<b>K test</b>	--

**Individual Field Application & Nutrients**

<b>Crop needs</b>	<b>Year</b>	<b>2009</b>	<b>2010</b>	<b>2011</b>	<b>2012</b>	<b>2013</b>	<b>2014</b>
Crop		Corn	Beans	Wheat	Corn	Beans	Wheat
Yield	(bu/acre OR ton/acre)		60	80	180	60	80
N needed (lbs/ac)	lbs/ac		0	80	216	0	80
- Legume N credits	(lb/acre)		0	40	0	0	40
- Commercial fertilizer N credits	(lb/acre)						
- Manure N carryover credit **	(lb/acre)		27.1	13.6	6.8	30.0	13.3
Total N Credits	(lb/acre)		27.1	53.6	6.8	30.0	53.3
Crop N Need Minus Credits	(lb/acre)		-27.1	26.4	209.2	-30.0	26.7
Maintenance P needed *	(lb/acre)		51.0	72.0	77.4	51.0	72.0
Maintenance K needed *	(lb/acre)		78.0	24.0	50.4	78.0	24.0

\* Maintenance P & K needed are listed for calculation & uptake purposes only

\*\* Manure N carryover credit = Previous years' apps \* Org N \* Mineralization factor

North Fork Pork, LLC							
North Blue		2009	2010	2011	2012	2013	2014
Manure Application		Corn	Beans	Wheat	Corn	Beans	Wheat
Storage		Deep Pit			Deep Pit		
Application Method		Inject			Inject		
Storage/Application Method					LINE1		
1st Year Available N ( $Am-N * N$ retention due to app method) + ( $OrgN * .35$ )	(lb/1000 gal)				17.48		
N App Rate ( $Crop N Need / 1st Yr Av N$ )	(1000 gal/acre)				12.0		
P App Rate ( $Maintenance P / P$ in analysis)	(1000 gal/acre)				9.80		
Apply at Prate or Nrate?					Prate		
<b>Application Rate to Use</b>	<b>(1000 gal)</b>	<b>10.0</b>	<b>0.0</b>	<b>0.0</b>	<b>9.8</b>	<b>0.0</b>	<b>0.0</b>
Total application ( $App Rate * Spreadable Acres$ )	(gallons)				377,203		
N applied ( $1st Year AvN * App rate$ )	(lb/acre)				171		
P applied ( $P$ in manure * $App rate$ )	(lb/acre)				77		
K applied ( $K$ in manure * $App rate$ )	(lb/acre)				138		
<b>Additional N Needed</b>	<b>(lb/acre)</b>		<b>-27</b>	<b>26</b>	<b>38</b>	<b>-30</b>	<b>27</b>
Acres Covered	(acres)		0.0	0.0	38.5	0.0	0.0



**Individual Field Information**

**North Fork Pork, LLC**

<b>Field Name:</b>	<u>Bruenger</u>	<b>Total Acres</b>	80.0
		<b>Non-Spreadable Acres</b>	9.5
<b>Township</b>	St. Albans	<b>Total Spreadable Acres</b>	70.5
<b>Section</b>	6		
<b>FSA Farm #</b>	7324	<b>Predominant Soil Type:</b>	6C2 Fishhook silt loam, 5-10% slopes
<b>FSA Tract #</b>	9024	<b>P test</b>	38
<b>FSA Field #'s</b>	1,3-8	<b>K test</b>	295

**Individual Field Application & Nutrients**

<b>Crop needs</b>	<b>Year</b>	<b>2009</b>	<b>2010</b>	<b>2011</b>	<b>2012</b>	<b>2013</b>	<b>2014</b>
Crop		Wheat	Corn	Beans	Wheat	Corn	Beans
Yield	(bu/acre OR ton/acre)		170	55	80	170	55
N needed (lbs/ac)	lbs/ac		204	0	80	204	0
- Legume N credits	(lb/acre)		0	0	40	0	0
- Commercial fertilizer N credits	(lb/acre)						
- Manure N carryover credit **	(lb/acre)		0.0	31.7	15.8	7.9	34.4
Total N Credits	(lb/acre)		0.0	31.7	55.8	7.9	34.4
Crop N Need Minus Credits	(lb/acre)		204.0	-31.7	24.2	196.1	-34.4
Maintenance P needed *	(lb/acre)		73.1	46.8	72.0	73.1	46.8
Maintenance K needed *	(lb/acre)		47.6	71.5	24.0	47.6	71.5

\* Maintenance P & K needed are listed for calculation & uptake purposes only

\*\* Manure N carryover credit = Previous years' apps \* Org N \* Mineralization factor

North Fork Pork, LLC							
Bruenger		2009	2010	2011	2012	2013	2014
Manure Application		Wheat	Corn	Beans	Wheat	Corn	Beans
Storage			Deep Pit			Deep Pit	
Application Method			Inject			Inject	
Storage/Application Method			LINE1			LINE1	
1st Year Available N ( $Am-N * N$ <i>retention due to app method</i> ) + ( $OrgN$ $* .35$ )	(lb/1000 gal)		17.48			17.48	
N App Rate ( $Crop N Need / 1st Yr Av N$ )	(1000 gal/acre)		11.7			11.2	
P App Rate ( $Maintenance P / P in analysis$ )	(1000 gal/acre)		9.25			9.25	
Apply at Prate or Nrate?			Nrate			Nrate	
<b>Application Rate to Use</b>	<b>(1000 gal)</b>	<b>0.0</b>	<b>11.7</b>	<b>0.0</b>	<b>0.0</b>	<b>11.2</b>	<b>0.0</b>
Total application ( $App Rate * Spreadable Acres$ )	(gallons)		822,816			790,894	
N applied ( $1st Year AvN * App rate$ )	(lb/acre)		204			196	
P applied ( $P in manure * App rate$ )	(lb/acre)		204			89	
K applied ( $K in manure * App rate$ )	(lb/acre)		92			158	
<b>Additional N Needed</b>	<b>(lb/acre)</b>		<b>0</b>	<b>-32</b>	<b>24</b>	<b>0</b>	<b>-34</b>
Acres Covered	(acres)		70.5	0.0	0.0	70.5	0.0

**Individual Field Information****North Fork Pork, LLC**

<b>Field Name:</b>	<u>Kurt's North</u>	<b>Total Acres</b>	99.4
		<b>Non-Spreadable Acres</b>	0.0
<b>Township</b>	St. Albans	<b>Total Spreadable Acres</b>	99.4
<b>Section</b>	5		
<b>FSA Farm #</b>	6696	<b>Predominant Soil Type:</b>	386B Downs silt loam, 2-5% slopes
<b>FSA Tract #</b>	3393	<b>P test</b>	--
<b>FSA Field #'s</b>	1,14	<b>K test</b>	--

**Individual Field Application & Nutrients**

<b>Crop needs</b>	<b>Year</b>	<b>2009</b>	<b>2010</b>	<b>2011</b>	<b>2012</b>	<b>2013</b>	<b>2014</b>
Crop		Corn	Beans	Wheat	Corn	Beans	Wheat
Yield	(bu/acre OR ton/acre)		55	80	180	55	80
N needed (lbs/ac)	lbs/ac		0	80	216	0	80
- Legume N credits	(lb/acre)		0	40	0	0	40
- Commercial fertilizer N credits	(lb/acre)						
- Manure N carryover credit **	(lb/acre)		27.1	13.6	6.8	30.0	13.3
Total N Credits	(lb/acre)		27.1	53.6	6.8	30.0	53.3
Crop N Need Minus Credits	(lb/acre)		-27.1	26.4	209.2	-30.0	26.7
Maintenance P needed *	(lb/acre)		46.8	72.0	77.4	46.8	72.0
Maintenance K needed *	(lb/acre)		71.5	24.0	50.4	71.5	24.0

\* Maintenance P & K needed are listed for calculation & uptake purposes only

\*\* Manure N carryover credit = Previous years' apps \* Org N \* Mineralization factor

North Fork Pork, LLC							
Kurt's North		2009	2010	2011	2012	2013	2014
Manure Application		Corn	Beans	Wheat	Corn	Beans	Wheat
Storage		Deep Pit			Deep Pit		
Application Method		Inject			Inject		
Storage/Application Method		LINE1			LINE1		
1st Year Available N ( $Am-N * N$ <i>retention due to app method</i> ) + ( $OrgN$ $* .35$ )	(lb/1000 gal)				17.48		
N App Rate ( $Crop N Need / 1st Yr Av N$ )	(1000 gal/acre)				12.0		
P App Rate ( $Maintenance P / P in analysis$ )	(1000 gal/acre)				9.80		
Apply at Prate or Nrate?					Prate		
<b>Application Rate to Use</b>	<b>(1000 gal)</b>	<b>10.0</b>	<b>0.0</b>	<b>0.0</b>	<b>9.8</b>	<b>0.0</b>	<b>0.0</b>
Total application ( $App Rate * Spreadable Acres$ )	(gallons)				973,868		
N applied ( $1st Year AvN * App rate$ )	(lb/acre)				171		
P applied ( $P in manure * App rate$ )	(lb/acre)				77		
K applied ( $K in manure * App rate$ )	(lb/acre)				138		
<b>Additional N Needed</b>	<b>(lb/acre)</b>		<b>-27</b>	<b>26</b>	<b>38</b>	<b>-30</b>	<b>27</b>
Acres Covered	(acres)		0.0	0.0	99.4	0.0	0.0



**Individual Field Information**

**North Fork Pork, LLC**

<b>Field Name:</b>	<u>Kurt's South</u>	<b>Total Acres</b>	101.2
		<b>Non-Spreadable Acres</b>	1.6
<b>Township</b>	St. Albans	<b>Total Spreadable Acres</b>	99.6
<b>Section</b>	5		
<b>FSA Farm #</b>	6696	<b>Predominant Soil Type:</b>	257A Clarksdale silt loam, 0-2% slopes
<b>FSA Tract #</b>	3393	<b>P test</b>	--
<b>FSA Field #'s</b>	3,6,7	<b>K test</b>	--

**Individual Field Application & Nutrients**

<b>Crop needs</b>	<b>Year</b>	<b>2009</b>	<b>2010</b>	<b>2011</b>	<b>2012</b>	<b>2013</b>	<b>2014</b>
Crop		Beans	Corn	Beans	Corn	Beans	Corn
Yield	(bu/acre OR ton/acre)		200	60	200	60	200
N needed (lbs/ac)	lbs/ac		240	0	240	0	240
- Legume N credits	(lb/acre)		40	0	40	0	40
- Commercial fertilizer N credits	(lb/acre)						
- Manure N carryover credit **	(lb/acre)		0.0	31.0	15.5	37.3	18.6
Total N Credits	(lb/acre)		40.0	31.0	55.5	37.3	58.6
Crop N Need Minus Credits	(lb/acre)		200.0	-31.0	184.5	-37.3	181.4
Maintenance P needed *	(lb/acre)		86.0	51.0	86.0	51.0	86.0
Maintenance K needed *	(lb/acre)		56.0	78.0	56.0	78.0	56.0

\* Maintenance P & K needed are listed for calculation & uptake purposes only

\*\* Manure N carryover credit = Previous years' apps \* Org N \* Mineralization factor

North Fork Pork, LLC							
Kurt's South		2009	2010	2011	2012	2013	2014
Manure Application		Beans	Corn	Beans	Corn	Beans	Corn
Storage			Deep Pit		Deep Pit		Deep Pit
Application Method			Inject		Inject		Inject
Storage/Application Method			LINE1		LINE1		LINE1
1st Year Available N ( $Am-N * N$ <i>retention due to app method</i> ) + ( $OrgN$ $* .35$ )	(lb/1000 gal)		17.48		17.48		17.48
N App Rate ( $Crop N Need / 1st Yr Av N$ )	(1000 gal/acre)		11.4		10.6		10.4
P App Rate ( $Maintenance P / P in analysis$ )	(1000 gal/acre)		10.89		10.89		10.89
Apply at Prate or Nrate?			Nrate		Prate		Prate
<b>Application Rate to Use</b>	<b>(1000 gal)</b>	<b>0.0</b>	<b>11.4</b>	<b>0.0</b>	<b>10.9</b>	<b>0.0</b>	<b>10.9</b>
Total application ( $App Rate * Spreadable Acres$ )	(gallons)		1,139,653		1,084,253		1,084,253
N applied ( $1st Year AvN * App rate$ )	(lb/acre)		200		190		190
P applied ( $P in manure * App rate$ )	(lb/acre)		200		86		86
K applied ( $K in manure * App rate$ )	(lb/acre)		90		153		153
<b>Additional N Needed</b>	<b>(lb/acre)</b>		<b>0</b>	<b>-31</b>	<b>-6</b>	<b>-37</b>	<b>-9</b>
Acres Covered	(acres)		99.6	0.0	99.6	0.0	99.6

**Individual Field Information**

**North Fork Pork, LLC**

<b>Field Name:</b>	<u>Miller 120</u>	<b>Total Acres</b>	67.2
		<b>Non-Spreadable Acres</b>	0.0
<b>Township</b>	St. Albans	<b>Total Spreadable Acres</b>	67.2
<b>Section</b>	5		
<b>FSA Farm #</b>	6696	<b>Predominant Soil Type:</b>	257A Clarksdale silt loam, 0-2% slopes
<b>FSA Tract #</b>	3393	<b>P test</b>	--
<b>FSA Field #'s</b>	8	<b>K test</b>	--

**Individual Field Application & Nutrients**

<b>Crop needs</b>	<b>Year</b>	<b>2009</b>	<b>2010</b>	<b>2011</b>	<b>2012</b>	<b>2013</b>	<b>2014</b>
Crop		Corn	Corn	Beans	Corn	Beans	Corn
Yield	(bu/acre OR ton/acre)		200	60	200	60	200
N needed (lbs/ac)	lbs/ac		240	0	240	0	240
- Legume N credits	(lb/acre)		0	0	40	0	40
- Commercial fertilizer N credits	(lb/acre)						
- Manure N carryover credit **	(lb/acre)		0.0	37.2	18.6	38.8	19.4
Total N Credits	(lb/acre)		0.0	37.2	58.6	38.8	59.4
Crop N Need Minus Credits	(lb/acre)		240.0	-37.2	181.4	-38.8	180.6
Maintenance P needed *	(lb/acre)		86.0	51.0	86.0	51.0	86.0
Maintenance K needed *	(lb/acre)		56.0	78.0	56.0	78.0	56.0

\* Maintenance P & K needed are listed for calculation & uptake purposes only

\*\* Manure N carryover credit = Previous years' apps \* Org N \* Mineralization factor

North Fork Pork, LLC							
Miller 120		2009	2010	2011	2012	2013	2014
Manure Application		Corn	Corn	Beans	Corn	Beans	Corn
Storage			Deep Pit		Deep Pit		Deep Pit
Application Method			Inject		Inject		Inject
Storage/Application Method			LINE1		LINE1		LINE1
1st Year Available N ( $Am-N * N$ <i>retention due to app method</i> ) + ( $OrgN$ $* .35$ )	(lb/1000 gal)		17.48		17.48		17.48
N App Rate ( $Crop N Need / 1st Yr Av N$ )	(1000 gal/acre)		13.7		10.4		10.3
P App Rate ( $Maintenance P / P in analysis$ )	(1000 gal/acre)		10.89		10.89		10.89
Apply at Prate or Nrate?			Nrate		Prate		Prate
<b>Application Rate to Use</b>	<b>(1000 gal)</b>	<b>0.0</b>	<b>13.7</b>	<b>0.0</b>	<b>10.9</b>	<b>0.0</b>	<b>10.9</b>
Total application ( $App Rate * Spreadable Acres$ )	(gallons)		922,707		731,544		731,544
N applied ( $1st Year AvN * App rate$ )	(lb/acre)		240		190		190
P applied ( $P in manure * App rate$ )	(lb/acre)		240		86		86
K applied ( $K in manure * App rate$ )	(lb/acre)		108		153		153
<b>Additional N Needed</b>	<b>(lb/acre)</b>		<b>0</b>	<b>-37</b>	<b>-9</b>	<b>-39</b>	<b>-10</b>
Acres Covered	(acres)		67.2	0.0	67.2	0.0	67.2



**Individual Field Information**

**North Fork Pork, LLC**

<b>Field Name:</b>	<u>Geischler's North</u>	<b>Total Acres</b>	46.4
		<b>Non-Spreadable Acres</b>	0.0
<b>Township</b>	St. Albans	<b>Total Spreadable Acres</b>	46.4
<b>Section</b>	6		
<b>FSA Farm #</b>	6696	<b>Predominant Soil Type:</b>	6C2 Fishhook silt loam, 5-10% slopes
<b>FSA Tract #</b>	3389	<b>P test</b>	--
<b>FSA Field #'s</b>	6,7	<b>K test</b>	--

**Individual Field Application & Nutrients**

<b>Crop needs</b>	<b>Year</b>	<b>2009</b>	<b>2010</b>	<b>2011</b>	<b>2012</b>	<b>2013</b>	<b>2014</b>
Crop		Corn	Beans	Wheat	Corn	Beans	Wheat
Yield	(bu/acre OR ton/acre)		55	80	170	55	80
N needed (lbs/ac)	lbs/ac		0	80	204	0	80
- Legume N credits	(lb/acre)		0	40	0	0	40
- Commercial fertilizer N credits	(lb/acre)						
- Manure N carryover credit **	(lb/acre)		27.1	13.6	6.8	28.5	12.5
Total N Credits	(lb/acre)		27.1	53.6	6.8	28.5	52.5
Crop N Need Minus Credits	(lb/acre)		-27.1	26.4	197.2	-28.5	27.5
Maintenance P needed *	(lb/acre)		46.8	72.0	73.1	46.8	72.0
Maintenance K needed *	(lb/acre)		71.5	24.0	47.6	71.5	24.0

\* Maintenance P & K needed are listed for calculation & uptake purposes only

\*\* Manure N carryover credit = Previous years' apps \* Org N \* Mineralization factor

North Fork Pork, LLC							
Geischler's North		2009	2010	2011	2012	2013	2014
Manure Application		Corn	Beans	Wheat	Corn	Beans	Wheat
Storage		Deep Pit			Deep Pit		
Application Method		Inject			Inject		
Storage/Application Method					LINE1		
1st Year Available N ( $Am-N * N$ retention due to app method) + ( $OrgN * .35$ )		(lb/1000 gal)			17.48		
N App Rate ( $Crop N Need / 1st Yr Av N$ )		(1000 gal/acre)			11.3		
P App Rate ( $Maintenance P / P in analysis$ )		(1000 gal/acre)			9.25		
Apply at Prate or Nrate?					Prate		
<b>Application Rate to Use</b>		<b>(1000 gal)</b>	<b>10.0</b>	<b>0.0</b>	<b>0.0</b>	<b>9.3</b>	<b>0.0</b>
Total application ( $App Rate * Spreadable Acres$ )		(gallons)			429,347		
N applied ( $1st Year AvN * App rate$ )		(lb/acre)			162		
P applied ( $P in manure * App rate$ )		(lb/acre)			73		
K applied ( $K in manure * App rate$ )		(lb/acre)			130		
<b>Additional N Needed</b>		<b>(lb/acre)</b>		<b>-27</b>	<b>26</b>	<b>35</b>	<b>-28</b>
Acres Covered		(acres)		0.0	0.0	46.4	0.0

**Individual Field Information**

**North Fork Pork, LLC**

<b>Field Name:</b>	<u>Geischler's South</u>	<b>Total Acres</b>	11.8
		<b>Non-Spreadable Acres</b>	0.0
<b>Township</b>	St. Albans	<b>Total Spreadable Acres</b>	11.8
<b>Section</b>	6		
<b>FSA Farm #</b>	6696	<b>Predominant Soil Type:</b>	971D3 Fishhook-Atlas complex, 10-15% slopes
<b>FSA Tract #</b>	3389	<b>P test</b>	--
<b>FSA Field #'s</b>	3,4	<b>K test</b>	--

**Individual Field Application & Nutrients**

<b>Crop needs</b>	<b>Year</b>	<b>2009</b>	<b>2010</b>	<b>2011</b>	<b>2012</b>	<b>2013</b>	<b>2014</b>
Crop		Beans	Corn	Beans	Corn	Beans	Corn
Yield	(bu/acre OR ton/acre)		170	55	170	55	170
N needed (lbs/ac)	lbs/ac		204	0	204	0	204
- Legume N credits	(lb/acre)		40	0	40	0	40
- Commercial fertilizer N credits	(lb/acre)						
- Manure N carryover credit **	(lb/acre)		0.0	25.5	12.7	31.5	15.7
Total N Credits	(lb/acre)		40.0	25.5	52.7	31.5	55.7
Crop N Need Minus Credits	(lb/acre)		164.0	-25.5	151.3	-31.5	148.3
Maintenance P needed *	(lb/acre)		73.1	46.8	73.1	46.8	73.1
Maintenance K needed *	(lb/acre)		47.6	71.5	47.6	71.5	47.6

\* Maintenance P & K needed are listed for calculation & uptake purposes only

\*\* Manure N carryover credit = Previous years' apps \* Org N \* Mineralization factor

North Fork Pork, LLC							
Geischler's South		2009	2010	2011	2012	2013	2014
Manure Application		Beans	Corn	Beans	Corn	Beans	Corn
Storage			Deep Pit		Deep Pit		Deep Pit
Application Method			Inject		Inject		Inject
Storage/Application Method			LINE1		LINE1		LINE1
1st Year Available N ( $Am-N * N$ <i>retention due to app method</i> ) + ( $OrgN$ $* .35$ )	(lb/1000 gal)		17.48		17.48		17.48
N App Rate ( $Crop N Need / 1st Yr Av N$ )	(1000 gal/acre)		9.4		8.7		8.5
P App Rate ( $Maintenance P / P in analysis$ )	(1000 gal/acre)		9.25		9.25		9.25
Apply at Prate or Nrate?			Nrate		Prate		Prate
<b>Application Rate to Use</b>	<b>(1000 gal)</b>	<b>0.0</b>	<b>9.4</b>	<b>0.0</b>	<b>9.3</b>	<b>0.0</b>	<b>9.3</b>
Total application ( $App Rate * Spreadable Acres$ )	(gallons)		110,716		109,187		109,187
N applied ( $1st Year AvN * App rate$ )	(lb/acre)		164		162		162
P applied ( $P in manure * App rate$ )	(lb/acre)		164		73		73
K applied ( $K in manure * App rate$ )	(lb/acre)		74		130		130
<b>Additional N Needed</b>	<b>(lb/acre)</b>		<b>0</b>	<b>-25</b>	<b>-10</b>	<b>-31</b>	<b>-13</b>
Acres Covered	(acres)		11.8	0.0	11.8	0.0	11.8