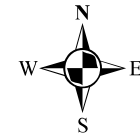


North Fork Pork LLC

Individual Fields Soil Map



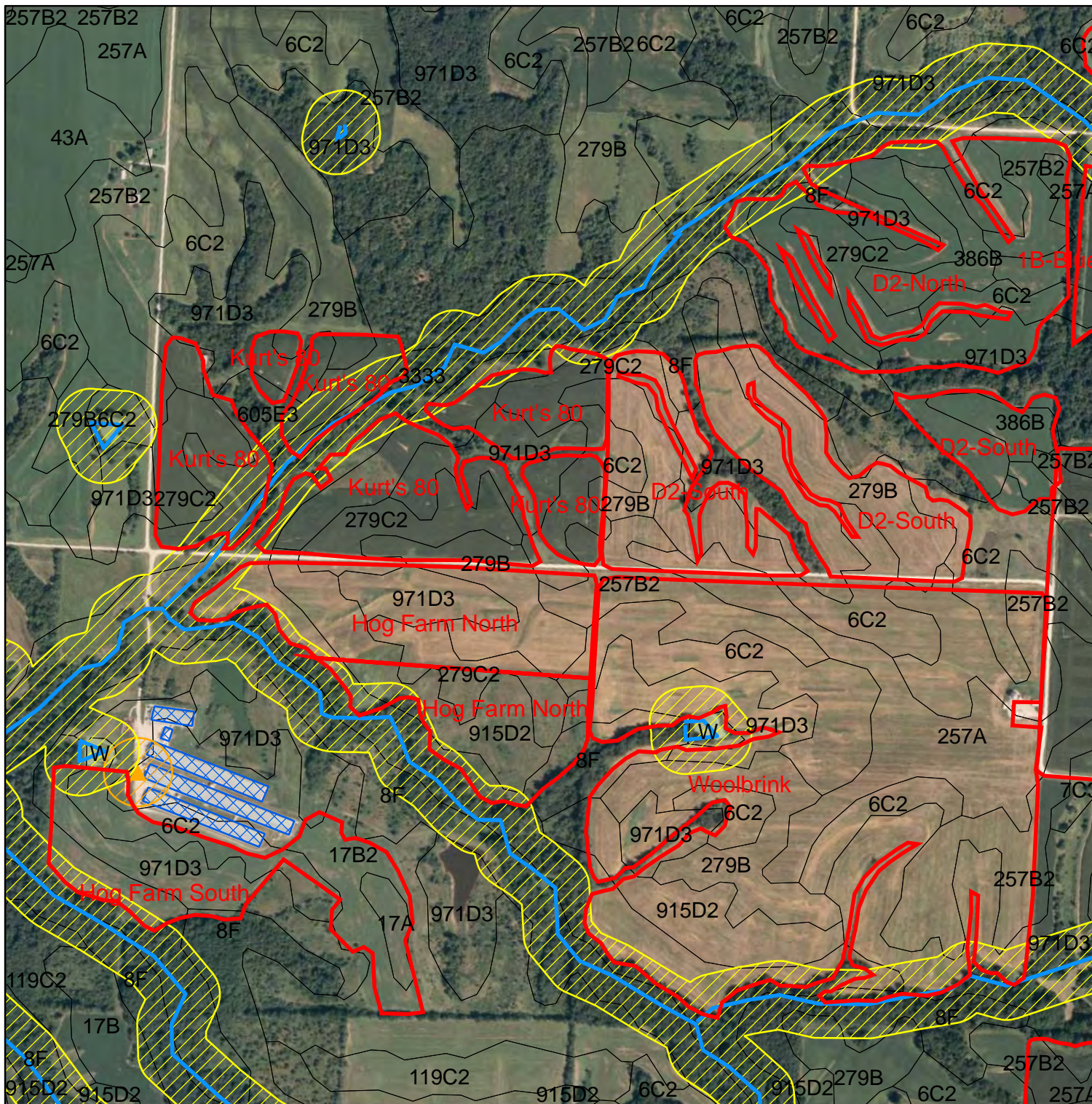
Legend

- Fields
- Water
- Water Buffer
- Well
- Well Buffer
- Grass Waterways
- Livestock Facilities

1,600

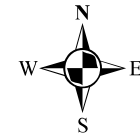
Feet

 **Frank & West**
Environmental Engineers, Inc.
7226 N. State Route 29 Phone: 217/487-7686
Springfield, IL 62707 Fax: 217/487-7687



North Fork Pork LLC

Individual Fields Soil Map



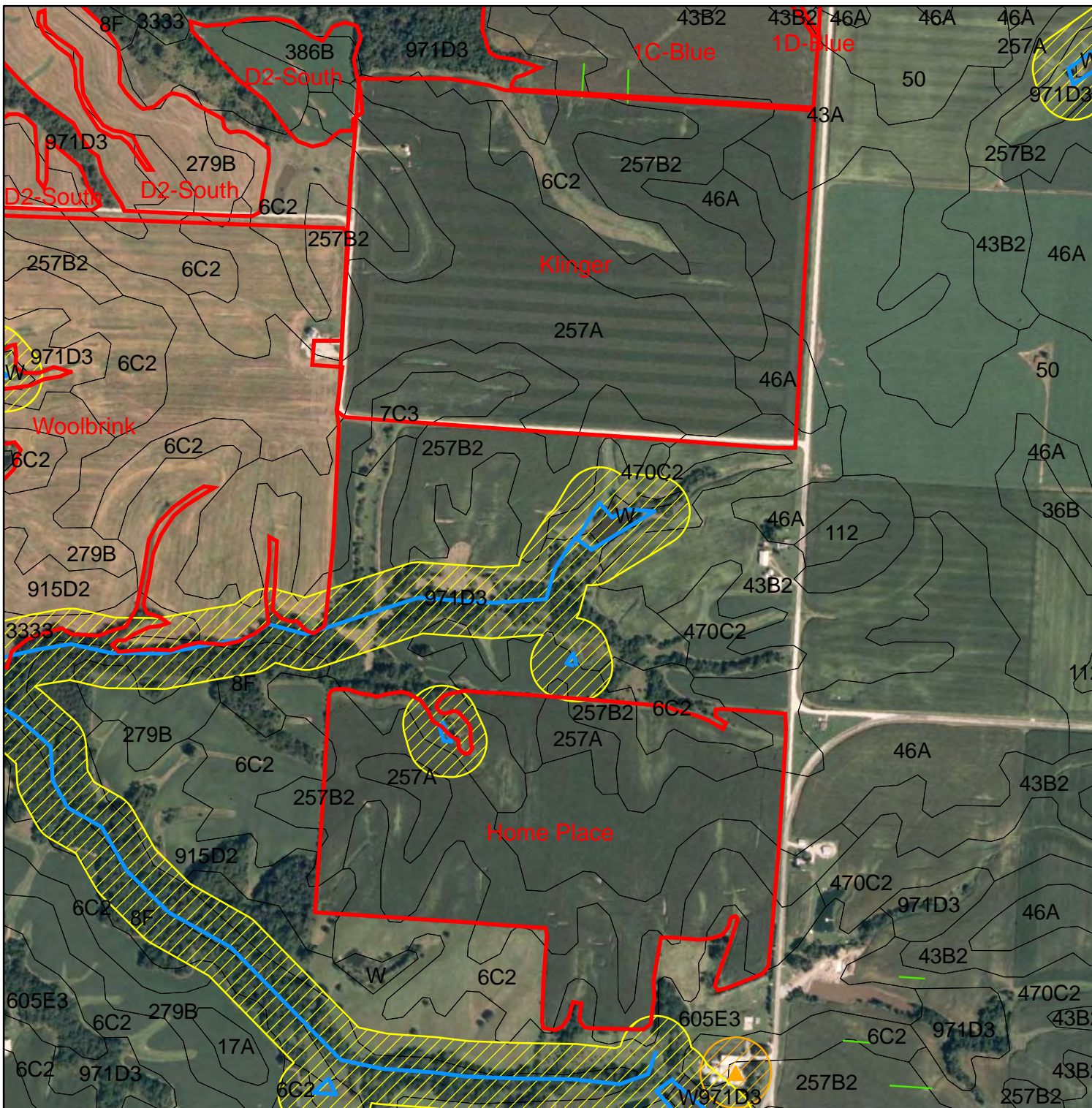
Legend

- Fields
- Water
- Water Buffer
- Well
- Well Buffer
- Grass Waterways
- Livestock Facilities

1,500

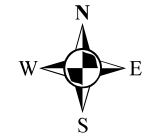
Feet

 **Frank & West**
Environmental Engineers, Inc.
7226 N. State Route 29 Phone: 217/487-7686
Springfield, IL 62707 Fax: 217/487-7687



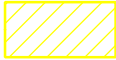






North Fork Pork LLC


Individual Fields Soil Map



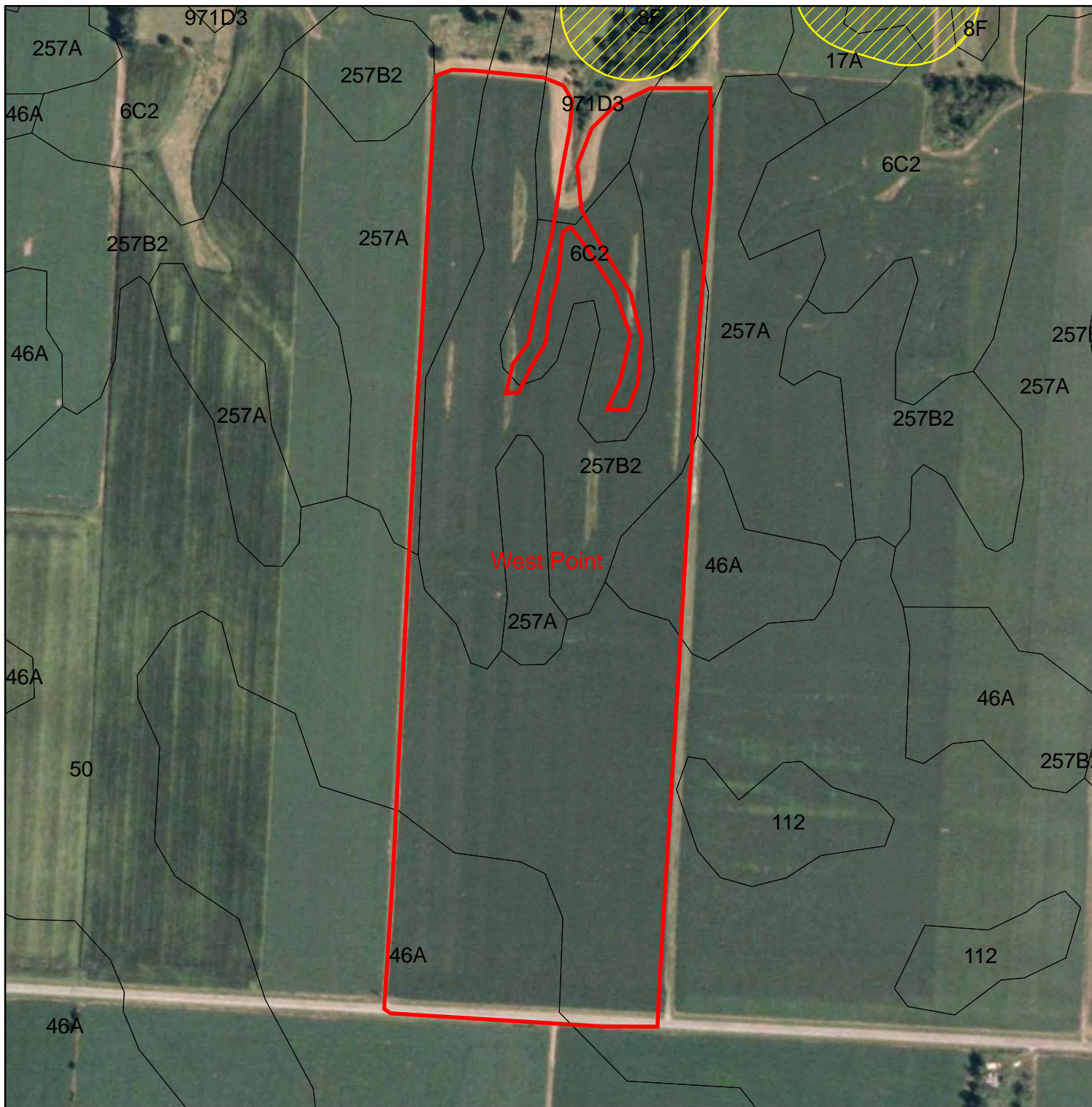
Legend

-  Fields
-  Water
-  Water Buffer
-  Well
-  Well Buffer
-  Grass Waterways
-  Livestock Facilities

740

 Feet

 **Frank & West**
Environmental Engineers, Inc.
7226 N. State Route 29 Phone: 217/487-7686
Springfield, IL 62707 Fax: 217/487-7687



Individual Field Information

North Fork Pork, LLC

Field Name:	<u>D I I K - S</u>	Total Acres	49.9
		Non-Spreadable Acres	0.0
Township	St. Albans	Total Spreadable Acres	49.9
Section	8		
FSA Farm #	7324	Predominant Soil Type:	279B Rozetta silt loam, 2-5% slopes
FSA Tract #	3398	P test	58
FSA Field #'s	5,10	K test	248

Individual Field Application & Nutrients

Crop needs	Year	2009	2010	2011	2012	2013	2014
Crop		Corn	Corn	Beans	Wheat	Corn	Beans
Yield	(bu/acre OR ton/acre)		170	55	80	170	55
N needed (lbs/ac)	lbs/ac		204	0	80	204	0
- Legume N credits	(lb/acre)		0	0	40	0	0
- Commercial fertilizer N credits	(lb/acre)						
- Manure N carryover credit **	(lb/acre)		0.0	31.7	15.8	7.9	34.4
Total N Credits	(lb/acre)		0.0	31.7	55.8	7.9	34.4
Crop N Need Minus Credits	(lb/acre)		204.0	-31.7	24.2	196.1	-34.4
Maintenance P needed *	(lb/acre)		73.1	46.8	72.0	73.1	46.8
Maintenance K needed *	(lb/acre)		47.6	71.5	24.0	47.6	71.5

* Maintenance P & K needed are listed for calculation & uptake purposes only

** Manure N carryover credit = Previous years' apps * Org N * Mineralization factor

North Fork Pork, LLC							
D II K - S		2009	2010	2011	2012	2013	2014
Manure Application		Corn	Corn	Beans	Wheat	Corn	Beans
Storage			Deep Pit			Deep Pit	
Application Method			Inject			Inject	
Storage/Application Method			LINE1			LINE1	
1st Year Available N ($Am-N * N$ <i>retention due to app method</i>) + ($OrgN$ $* .35$)	(lb/1000 gal)		17.48			17.48	
N App Rate ($Crop N Need / 1st Yr Av N$)	(1000 gal/acre)		11.7			11.2	
P App Rate ($Maintenance P / P in analysis$)	(1000 gal/acre)		9.25			9.25	
Apply at Prate or Nrate?			Nrate			Nrate	
Application Rate to Use	(1000 gal)	0.0	11.7	0.0	0.0	11.2	0.0
Total application ($App Rate * Spreadable Acres$)	(gallons)		582,390			559,796	
N applied ($1st Year AvN * App rate$)	(lb/acre)		204			196	
P applied ($P in manure * App rate$)	(lb/acre)		204			89	
K applied ($K in manure * App rate$)	(lb/acre)		92			158	
Additional N Needed	(lb/acre)		0	-32	24	0	-34
Acres Covered	(acres)		49.9	0.0	0.0	49.9	0.0

Individual Field Information**North Fork Pork, LLC**

Field Name:	<u>D II K - Center</u>	Total Acres	10.0
		Non-Spreadable Acres	0.0
Township	St. Albans	Total Spreadable Acres	10.0
Section	8		
FSA Farm #	7324	Predominant Soil Type:	386B Downs silt loam, 2-5% slopes
FSA Tract #	3398	P test	--
FSA Field #'s	7	K test	--

Individual Field Application & Nutrients

Crop needs	Year	2009	2010	2011	2012	2013	2014
Crop		Wheat	Corn	Beans	Wheat	Corn	Beans
Yield	(bu/acre OR ton/acre)		170	55	80	170	55
N needed (lbs/ac)	lbs/ac		204	0	80	204	0
- Legume N credits	(lb/acre)		0	0	40	0	0
- Commercial fertilizer N credits	(lb/acre)						
- Manure N carryover credit **	(lb/acre)		0.0	31.7	15.8	7.9	29.1
Total N Credits	(lb/acre)		0.0	31.7	55.8	7.9	29.1
Crop N Need Minus Credits	(lb/acre)		204.0	-31.7	24.2	196.1	-29.1
Maintenance P needed *	(lb/acre)		73.1	46.8	72.0	73.1	46.8
Maintenance K needed *	(lb/acre)		47.6	71.5	24.0	47.6	71.5

* Maintenance P & K needed are listed for calculation & uptake purposes only

** Manure N carryover credit = Previous years' apps * Org N * Mineralization factor

North Fork Pork, LLC							
D II K - Center		2009	2010	2011	2012	2013	2014
Manure Application		Wheat	Corn	Beans	Wheat	Corn	Beans
Storage			Deep Pit			Deep Pit	
Application Method			Inject			Inject	
Storage/Application Method			LINE1			LINE1	
1st Year Available N ($Am-N * N$ retention due to app method) + (OrgN * .35)	(lb/1000 gal)		17.48			17.48	
N App Rate (Crop N Need / 1st Yr Av N)	(1000 gal/acre)		11.7			11.2	
P App Rate (Maintenance P / P in analysis)	(1000 gal/acre)		9.25			9.25	
Apply at Prate or Nrate?			Nrate			Prate	
Application Rate to Use	(1000 gal)	0.0	11.7	0.0	0.0	9.3	0.0
Total application (App Rate * Spreadable Acres)	(gallons)		116,711			92,532	
N applied (1st Year AvN * App rate)	(lb/acre)		204			162	
P applied (P in manure * App rate)	(lb/acre)		204			73	
K applied (K in manure * App rate)	(lb/acre)		92			130	
Additional N Needed	(lb/acre)		0	-32	24	34	-29
Acres Covered	(acres)		10.0	0.0	0.0	10.0	0.0

Individual Field Information**North Fork Pork, LLC**

Field Name:	<u>D I I K - N</u>	Total Acres	45.4
		Non-Spreadable Acres	2.6
Township	St. Albans	Total Spreadable Acres	42.8
Section	8		
FSA Farm #	7324	Predominant Soil Type:	971D3 Fishhook-Atlas complex, 10-15% slopes
FSA Tract #	3398	P test	--
FSA Field #'s	4	K test	--

Individual Field Application & Nutrients

Crop needs	Year	2009	2010	2011	2012	2013	2014
Crop		Beans	Corn	Beans	Wheat	Corn	Beans
Yield	(bu/acre OR ton/acre)		170	55	80	170	55
N needed (lbs/ac)	lbs/ac		204	0	80	204	0
- Legume N credits	(lb/acre)		40	0	40	0	0
- Commercial fertilizer N credits	(lb/acre)						
- Manure N carryover credit **	(lb/acre)		0.0	25.5	12.7	6.4	28.3
Total N Credits	(lb/acre)		40.0	25.5	52.7	6.4	28.3
Crop N Need Minus Credits	(lb/acre)		164.0	-25.5	27.3	197.6	-28.3
Maintenance P needed *	(lb/acre)		73.1	46.8	72.0	73.1	46.8
Maintenance K needed *	(lb/acre)		47.6	71.5	24.0	47.6	71.5

* Maintenance P & K needed are listed for calculation & uptake purposes only

** Manure N carryover credit = Previous years' apps * Org N * Mineralization factor

North Fork Pork, LLC							
D II K - N		2009	2010	2011	2012	2013	2014
Manure Application		Beans	Corn	Beans	Wheat	Corn	Beans
Storage			Deep Pit			Deep Pit	
Application Method			Inject			Inject	
Storage/Application Method			LINE1			LINE1	
1st Year Available N ($Am-N * N$ <i>retention due to app method</i>) + ($OrgN$ $* .35$)	(lb/1000 gal)		17.48			17.48	
N App Rate ($Crop N Need / 1st Yr Av N$)	(1000 gal/acre)		9.4			11.3	
P App Rate ($Maintenance P / P in analysis$)	(1000 gal/acre)		9.25			9.25	
Apply at Prate or Nrate?			Nrate			Prate	
Application Rate to Use	(1000 gal)	0.0	9.4	0.0	0.0	9.3	0.0
Total application ($App Rate * Spreadable Acres$)	(gallons)		401,579			396,035	
N applied ($1st Year AvN * App rate$)	(lb/acre)		164			162	
P applied ($P in manure * App rate$)	(lb/acre)		164			73	
K applied ($K in manure * App rate$)	(lb/acre)		74			130	
Additional N Needed	(lb/acre)		0	-25	27	36	-28
Acres Covered	(acres)		42.8	0.0	0.0	42.8	0.0

Individual Field Information**North Fork Pork, LLC**

Field Name:	<u>Klinger</u>	Total Acres	113.9
		Non-Spreadable Acres	0.0
Township	St. Albans	Total Spreadable Acres	113.9
Section	9		
FSA Farm #	6696	Predominant Soil Type:	257A Clarksdale silt loam, 0-2% slopes
FSA Tract #	3397	P test	--
FSA Field #'s	1	K test	--

Individual Field Application & Nutrients

Crop needs	Year	2009	2010	2011	2012	2013	2014
Crop		Beans	Beans	Corn	Beans	Corn	Beans
Yield	(bu/acre OR ton/acre)		60	200	60	200	60
N needed (lbs/ac)	lbs/ac		0	240	0	240	0
- Legume N credits	(lb/acre)		40	40	0	40	0
- Commercial fertilizer N credits	(lb/acre)						
- Manure N carryover credit **	(lb/acre)		0.0	0.0	29.5	14.8	36.9
Total N Credits	(lb/acre)		40.0	40.0	29.5	54.8	36.9
Crop N Need Minus Credits	(lb/acre)		-40.0	200.0	-29.5	185.2	-36.9
Maintenance P needed *	(lb/acre)		51.0	86.0	51.0	86.0	51.0
Maintenance K needed *	(lb/acre)		78.0	56.0	78.0	56.0	78.0

* Maintenance P & K needed are listed for calculation & uptake purposes only

** Manure N carryover credit = Previous years' apps * Org N * Mineralization factor

North Fork Pork, LLC							
Klinger		2009	2010	2011	2012	2013	2014
Manure Application		Beans	Beans	Corn	Beans	Corn	Beans
Storage				Deep Pit		Deep Pit	
Application Method				Inject		Inject	
Storage/Application Method				LINE1		LINE1	
1st Year Available N ($Am-N * N$ <i>retention due to app method</i>) + ($OrgN$ $* .35$)	(lb/1000 gal)			17.48		17.48	
N App Rate ($Crop N Need / 1st Yr Av N$)	(1000 gal/acre)			11.4		10.6	
P App Rate ($Maintenance P / P in analysis$)	(1000 gal/acre)			10.89		10.89	
Apply at Prate or Nrate?				Prate		Prate	
Application Rate to Use	(1000 gal)	0.0	0.0	10.9	0.0	10.9	0.0
Total application ($App Rate * Spreadable Acres$)	(gallons)			1,239,924		1,239,924	
N applied ($1st Year AvN * App rate$)	(lb/acre)			190		190	
P applied ($P in manure * App rate$)	(lb/acre)			86		86	
K applied ($K in manure * App rate$)	(lb/acre)			153		153	
Additional N Needed	(lb/acre)		-40	10	-30	-5	-37
Acres Covered	(acres)		0.0	113.9	0.0	113.9	0.0

Individual Field Information**North Fork Pork, LLC**

Field Name:	Woolbrink	Total Acres	133.0
		Non-Spreadable Acres	11.8
Township	St. Albans	Total Spreadable Acres	121.2
Section	8		
FSA Farm #	6696	Predominant Soil Type:	257A Clarksdale silt loam, 0-2% slopes
FSA Tract #	3399	P test	--
FSA Field #'s	1,15	K test	--

Individual Field Application & Nutrients

Crop needs	Year	2009	2010	2011	2012	2013	2014
Crop		Corn	Beans	Corn	Beans	Corn	Beans
Yield	(bu/acre OR ton/acre)		60	200	60	200	60
N needed (lbs/ac)	lbs/ac		0	240	0	240	0
- Legume N credits	(lb/acre)		0	40	0	40	0
- Commercial fertilizer N credits	(lb/acre)						
- Manure N carryover credit **	(lb/acre)		0.0	0.0	29.5	14.8	36.9
Total N Credits	(lb/acre)		0.0	40.0	29.5	54.8	36.9
Crop N Need Minus Credits	(lb/acre)		0.0	200.0	-29.5	185.2	-36.9
Maintenance P needed *	(lb/acre)		51.0	86.0	51.0	86.0	51.0
Maintenance K needed *	(lb/acre)		78.0	56.0	78.0	56.0	78.0

* Maintenance P & K needed are listed for calculation & uptake purposes only

** Manure N carryover credit = Previous years' apps * Org N * Mineralization factor

North Fork Pork, LLC							
Woolbrink		2009	2010	2011	2012	2013	2014
Manure Application		Corn	Beans	Corn	Beans	Corn	Beans
Storage				Deep Pit		Deep Pit	
Application Method				Inject		Inject	
Storage/Application Method				LINE1		LINE1	
1st Year Available N ($Am-N * N$ <i>retention due to app method</i>) + ($OrgN$ $* .35$)	(lb/1000 gal)			17.48		17.48	
N App Rate ($Crop N Need / 1st Yr Av N$)	(1000 gal/acre)			11.4		10.6	
P App Rate ($Maintenance P / P in analysis$)	(1000 gal/acre)			10.89		10.89	
Apply at Prate or Nrate?				Prate		Prate	
Application Rate to Use	(1000 gal)	0.0	0.0	10.9	0.0	10.9	0.0
Total application ($App Rate * Spreadable Acres$)	(gallons)			1,319,392		1,319,392	
N applied ($1st Year AvN * App rate$)	(lb/acre)			190		190	
P applied ($P in manure * App rate$)	(lb/acre)			86		86	
K applied ($K in manure * App rate$)	(lb/acre)			153		153	
Additional N Needed	(lb/acre)		0	10	-30	-5	-37
Acres Covered	(acres)		0.0	121.2	0.0	121.2	0.0

Individual Field Information

North Fork Pork, LLC

Field Name:	<u>Hog Farm South</u>	Total Acres	35.2
		Non-Spreadable Acres	3.6
Township	St. Albans	Total Spreadable Acres	31.6
Section	8		
FSA Farm #	6696	Predominant Soil Type:	6C2 Fishhook silt loam, 5-10% slopes
FSA Tract #	3397	P test	--
FSA Field #'s	10	K test	--

Individual Field Application & Nutrients

Crop needs	Year	2009	2010	2011	2012	2013	2014
Crop		Beans	Corn	Beans	Corn	Beans	Corn
Yield	(bu/acre OR ton/acre)		180	60	180	60	180
N needed (lbs/ac)	lbs/ac		216	0	216	0	216
- Legume N credits	(lb/acre)		40	0	40	0	40
- Commercial fertilizer N credits	(lb/acre)						
- Manure N carryover credit **	(lb/acre)		0.0	27.3	13.7	33.4	16.7
Total N Credits	(lb/acre)		40.0	27.3	53.7	33.4	56.7
Crop N Need Minus Credits	(lb/acre)		176.0	-27.3	162.3	-33.4	159.3
Maintenance P needed *	(lb/acre)		77.4	51.0	77.4	51.0	77.4
Maintenance K needed *	(lb/acre)		50.4	78.0	50.4	78.0	50.4

* Maintenance P & K needed are listed for calculation & uptake purposes only

** Manure N carryover credit = Previous years' apps * Org N * Mineralization factor

North Fork Pork, LLC							
Hog Farm South							
		2009	2010	2011	2012	2013	2014
Manure Application		Beans	Corn	Beans	Corn	Beans	Corn
Storage			Deep Pit		Deep Pit		Deep Pit
Application Method			Inject		Inject		Inject
Storage/Application Method			LINE1		LINE1		LINE1
1st Year Available N ($Am-N * N$ retention due to app method) + ($OrgN * .35$)	(lb/1000 gal)		17.48		17.48		17.48
N App Rate ($Crop N Need / 1st Yr Av N$)	(1000 gal/acre)		10.1		9.3		9.1
P App Rate ($Maintenance P / P in analysis$)	(1000 gal/acre)		9.80		9.80		9.80
Apply at Prate or Nrate?			Nrate		Prate		Prate
Application Rate to Use	(1000 gal)	0.0	10.1	0.0	9.8	0.0	9.8
Total application ($App Rate * Spreadable Acres$)	(gallons)		318,188		309,600		309,600
N applied ($1st Year AvN * App rate$)	(lb/acre)		176		171		171
P applied ($P in manure * App rate$)	(lb/acre)		176		77		77
K applied ($K in manure * App rate$)	(lb/acre)		80		138		138
Additional N Needed	(lb/acre)		0	-27	-9	-33	-12
Acres Covered	(acres)		31.6	0.0	31.6	0.0	31.6

Individual Field Information

North Fork Pork, LLC

Field Name:	<u>Hog Farm North</u>	Total Acres	43.6
		Non-Spreadable Acres	16.6
Township	St. Albans	Total Spreadable Acres	27.0
Section	8		
FSA Farm #	6696	Predominant Soil Type:	279B Rozetta silt loam, 2-5% slopes
FSA Tract #	3397	P test	--
FSA Field #'s	18	K test	--

Individual Field Application & Nutrients

Crop needs	Year	2009	2010	2011	2012	2013	2014
Crop		Beans	Corn	Beans	Wheat	Corn	Beans
Yield	(bu/acre OR ton/acre)		180	60	80	180	60
N needed (lbs/ac)	lbs/ac		216	0	80	216	0
- Legume N credits	(lb/acre)		40	0	40	0	0
- Commercial fertilizer N credits	(lb/acre)						
- Manure N carryover credit **	(lb/acre)		0.0	27.3	13.7	6.8	30.0
Total N Credits	(lb/acre)		40.0	27.3	53.7	6.8	30.0
Crop N Need Minus Credits	(lb/acre)		176.0	-27.3	26.3	209.2	-30.0
Maintenance P needed *	(lb/acre)		77.4	51.0	72.0	77.4	51.0
Maintenance K needed *	(lb/acre)		50.4	78.0	24.0	50.4	78.0

* Maintenance P & K needed are listed for calculation & uptake purposes only

** Manure N carryover credit = Previous years' apps * Org N * Mineralization factor

North Fork Pork, LLC							
Hog Farm North		2009	2010	2011	2012	2013	2014
Manure Application		Beans	Corn	Beans	Wheat	Corn	Beans
Storage			Deep Pit			Deep Pit	
Application Method			Inject			Inject	
Storage/Application Method			LINE1			LINE1	
1st Year Available N ($Am-N * N$ <i>retention due to app method</i>) + ($OrgN$ $* .35$)	(lb/1000 gal)		17.48			17.48	
N App Rate ($Crop N Need / 1st Yr Av N$)	(1000 gal/acre)		10.1			12.0	
P App Rate ($Maintenance P / P in analysis$)	(1000 gal/acre)		9.80			9.80	
Apply at Prate or Nrate?			Nrate			Prate	
Application Rate to Use	(1000 gal)	0.0	10.1	0.0	0.0	9.8	0.0
Total application ($App Rate * Spreadable Acres$)	(gallons)		271,869			264,532	
N applied ($1st Year AvN * App rate$)	(lb/acre)		176			171	
P applied ($P in manure * App rate$)	(lb/acre)		176			77	
K applied ($K in manure * App rate$)	(lb/acre)		80			138	
Additional N Needed	(lb/acre)		0	-27	26	38	-30
Acres Covered	(acres)		27.0	0.0	0.0	27.0	0.0

Individual Field Information**North Fork Pork, LLC**

Field Name:	<u>Kurt's 80</u>	Total Acres	57.8
		Non-Spreadable Acres	9.7
Township	St. Albans	Total Spreadable Acres	48.1
Section	8		
FSA Farm #	6696	Predominant Soil Type:	279C2 Rozetta silt loam, 5-10% slopes
FSA Tract #	3397	P test	--
FSA Field #'s	2,4,16,21,22	K test	--

Individual Field Application & Nutrients

Crop needs	Year	2009	2010	2011	2012	2013	2014
Crop		Wheat	Beans	Wheat	Corn	Beans	Wheat
Yield	(bu/acre OR ton/acre)		55	80	170	55	80
N needed (lbs/ac)	lbs/ac		0	80	204	0	80
- Legume N credits	(lb/acre)		0	40	0	0	40
- Commercial fertilizer N credits	(lb/acre)						
- Manure N carryover credit **	(lb/acre)		0.0	0.0	0.0	25.1	12.5
Total N Credits	(lb/acre)		0.0	40.0	0.0	25.1	52.5
Crop N Need Minus Credits	(lb/acre)		0.0	40.0	204.0	-25.1	27.5
Maintenance P needed *	(lb/acre)		46.8	72.0	73.1	46.8	72.0
Maintenance K needed *	(lb/acre)		71.5	24.0	47.6	71.5	24.0

* Maintenance P & K needed are listed for calculation & uptake purposes only

** Manure N carryover credit = Previous years' apps * Org N * Mineralization factor

North Fork Pork, LLC							
Kurt's 80		2009	2010	2011	2012	2013	2014
Manure Application		Wheat	Beans	Wheat	Corn	Beans	Wheat
Storage					Deep Pit		
Application Method					Inject		
Storage/Application Method					LINE1		
1st Year Available N ($Am-N * N$ <i>retention due to app method</i>) + ($OrgN$ $* .35$)	(lb/1000 gal)				17.48		
N App Rate ($Crop N Need / 1st Yr Av N$)	(1000 gal/acre)				11.7		
P App Rate ($Maintenance P / P in analysis$)	(1000 gal/acre)				9.25		
Apply at Prate or Nrate?					Prate		
Application Rate to Use	(1000 gal)	0.0	0.0	0.0	9.3	0.0	0.0
Total application ($App Rate * Spreadable Acres$)	(gallons)				445,077		
N applied ($1st Year AvN * App rate$)	(lb/acre)				162		
P applied ($P in manure * App rate$)	(lb/acre)				73		
K applied ($K in manure * App rate$)	(lb/acre)				130		
Additional N Needed	(lb/acre)		0	40	42	-25	27
Acres Covered	(acres)		0.0	0.0	48.1	0.0	0.0

Individual Field Information

North Fork Pork, LLC

Field Name:	<u>Home Place</u>	Total Acres	84.2
		Non-Spreadable Acres	3.3
Township	St. Albans	Total Spreadable Acres	80.9
Section	16		
FSA Farm #	6696	Predominant Soil Type:	46A Herrick silt loam, 0-2% slopes
FSA Tract #	3649	P test	80
FSA Field #'s	1	K test	351

Individual Field Application & Nutrients

Crop needs	Year	2009	2010	2011	2012	2013	2014
Crop		Corn	Beans	Corn	Beans	Corn	Beans
Yield	(bu/acre OR ton/acre)		60	200	60	200	60
N needed (lbs/ac)	lbs/ac		0	240	0	240	0
- Legume N credits	(lb/acre)		0	40	0	40	0
- Commercial fertilizer N credits	(lb/acre)						
- Manure N carryover credit **	(lb/acre)		27.1	13.6	35.7	17.9	35.5
Total N Credits	(lb/acre)		27.1	53.6	35.7	57.9	35.5
Crop N Need Minus Credits	(lb/acre)		-27.1	186.4	-35.7	182.1	-35.5
Maintenance P needed *	(lb/acre)		51.0	86.0	51.0	86.0	51.0
Maintenance K needed *	(lb/acre)		78.0	56.0	78.0	56.0	78.0

* Maintenance P & K needed are listed for calculation & uptake purposes only

** Manure N carryover credit = Previous years' apps * Org N * Mineralization factor

North Fork Pork, LLC							
Home Place		2009	2010	2011	2012	2013	2014
Manure Application		Corn	Beans	Corn	Beans	Corn	Beans
Storage		Deep Pit		Deep Pit		Deep Pit	
Application Method		Inject		Inject		Inject	
Storage/Application Method				LINE1		LINE1	
1st Year Available N ($Am-N * N$ retention due to app method) + (OrgN * .35)	(lb/1000 gal)			17.48		17.48	
N App Rate (Crop N Need / 1st Yr Av N)	(1000 gal/acre)			10.7		10.4	
P App Rate (Maintenance P / P in analysis)	(1000 gal/acre)			10.89		10.89	
Apply at Prate or Nrate?				Nrate		Nrate	
Application Rate to Use	(1000 gal)	10.0	0.0	10.7	0.0	10.4	0.0
Total application (App Rate * Spreadable Acres)	(gallons)			862,909		843,033	
N applied (1st Year AvN * App rate)	(lb/acre)			186		182	
P applied (P in manure * App rate)	(lb/acre)			84		82	
K applied (K in manure * App rate)	(lb/acre)			150		146	
Additional N Needed	(lb/acre)		-27	0	-36	0	-35
Acres Covered	(acres)		0.0	80.9	0.0	80.9	0.0

Individual Field Information**North Fork Pork, LLC**

Field Name:	<u>West Point Woolbrink</u>	Total Acres	44.8
		Non-Spreadable Acres	0.0
Township	St. Albans	Total Spreadable Acres	44.8
Section	10		
FSA Farm #	7324	Predominant Soil Type:	50 Virden silty clay loam
FSA Tract #	435	P test	59
FSA Field #'s	1	K test	233

Individual Field Application & Nutrients

Crop needs	Year	2009	2010	2011	2012	2013	2014
Crop		Beans	Corn	Beans	Corn	Beans	Corn
Yield	(bu/acre OR ton/acre)		200	60	200	60	200
N needed (lbs/ac)	lbs/ac		240	0	240	0	240
- Legume N credits	(lb/acre)		40	0	40	0	40
- Commercial fertilizer N credits	(lb/acre)						
- Manure N carryover credit **	(lb/acre)		0.0	31.0	15.5	36.4	18.2
Total N Credits	(lb/acre)		40.0	31.0	55.5	36.4	58.2
Crop N Need Minus Credits	(lb/acre)		200.0	-31.0	184.5	-36.4	181.8
Maintenance P needed *	(lb/acre)		86.0	51.0	86.0	51.0	86.0
Maintenance K needed *	(lb/acre)		56.0	78.0	56.0	78.0	56.0

* Maintenance P & K needed are listed for calculation & uptake purposes only

** Manure N carryover credit = Previous years' apps * Org N * Mineralization factor

North Fork Pork, LLC							
West Point Woolbrink		2009	2010	2011	2012	2013	2014
Manure Application		Beans	Corn	Beans	Corn	Beans	Corn
Storage			Deep Pit		Deep Pit		Deep Pit
Application Method			Inject		Inject		Inject
Storage/Application Method			LINE1		LINE1		LINE1
1st Year Available N ($Am-N * N$ <i>retention due to app method</i>) + ($OrgN$ $* .35$)	(lb/1000 gal)		17.48		17.48		17.48
N App Rate ($Crop N Need / 1st Yr Av N$)	(1000 gal/acre)		11.4		10.6		10.4
P App Rate ($Maintenance P / P in analysis$)	(1000 gal/acre)		10.89		10.89		10.89
Apply at Prate or Nrate?			Nrate		Nrate		Nrate
Application Rate to Use	(1000 gal)	0.0	11.4	0.0	10.6	0.0	10.4
Total application ($App Rate * Spreadable Acres$)	(gallons)		512,615		472,840		465,982
N applied ($1st Year AvN * App rate$)	(lb/acre)		200		184		182
P applied ($P in manure * App rate$)	(lb/acre)		200		83		82
K applied ($K in manure * App rate$)	(lb/acre)		90		148		146
Additional N Needed	(lb/acre)		0	-31	0	-36	0
Acres Covered	(acres)		44.8	0.0	44.8	0.0	44.8