

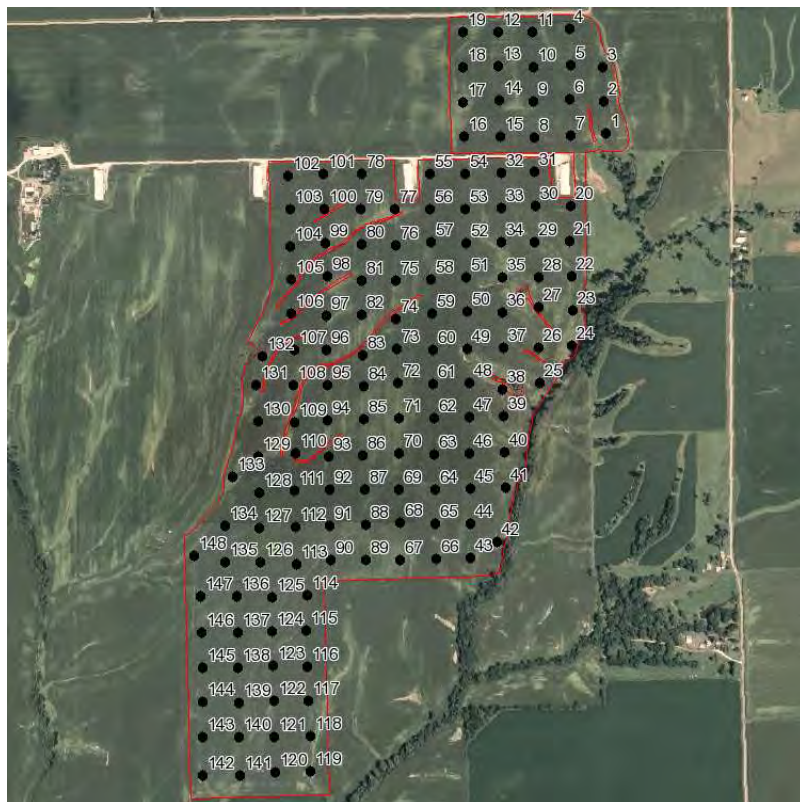
Field Sampler

Boundary & Soil Nutrients

Grower: McChesney Family Farms
Farm: Upper Place
Acres: 364.70

Field(s): MCCF 06 East of Pond

Netmapping
Riverland FS, Inc
126 South Public Square
PO Box 217
Knoxville, IL 61448
PHONE: 3092892383



Element	Average	Range
P:	48	13 - 145
K:	477	169 - 1190
Mg:	521	219 - 1395
Ca:	3225	1682 - 4900
S:	0	0 - 0
B:	N/A	N/A
Zn:	N/A	N/A
Mn:	N/A	N/A
Fe:	N/A	N/A
Cu:	N/A	N/A
Al:	N/A	N/A
Na:	N/A	N/A
SS:	N/A	N/A
NN:	0.0	0.0 - 0.0
OM:	0.0	0.0 - 0.0
pH:	6.2	5.2 - 7.8
Buffer:	6.8	5.9 - 7.0
ENR:	N/A	N/A
CeC:	13.4	8.0 - 23.0
BD:	N/A	N/A
SP:	N/A	N/A

Field No.	P (lbs/A)	K (lbs/A)	Mg (lbs/A)	Ca (lbs/A)	S (lbs/A)	B (lbs/A)	Zn (lbs/A)	Mn (lbs/A)	Fe (lbs/A)	Cu (lbs/A)	Al (lbs/A)	Na (lbs/A)	SS (lbs/A)	NN (lbs/A)	OM (%)	pH	Buffer	ENR (meg)	CeC (meg)	BD	SP (%)
MCCF 06 East of Pond																					
1	43	339	785	3223	0	n/a	n/a	n/a	n/a	n/a	n/a	n/a	n/a	0.0	0.0	6.6	7.0	n/a	12.0	n/a	n/a
2	28	346	402	2714	0	n/a	n/a	n/a	n/a	n/a	n/a	n/a	n/a	0.0	0.0	6.8	7.0	n/a	9.0	n/a	n/a
3	22	348	402	3279	0	n/a	n/a	n/a	n/a	n/a	n/a	n/a	n/a	0.0	0.0	6.7	7.0	n/a	10.0	n/a	n/a
4	33	588	451	3852	0	n/a	n/a	n/a	n/a	n/a	n/a	n/a	n/a	0.0	0.0	6.3	6.8	n/a	15.0	n/a	n/a
5	15	317	571	3714	0	n/a	n/a	n/a	n/a	n/a	n/a	n/a	n/a	0.0	0.0	6.2	6.8	n/a	14.0	n/a	n/a
6	35	264	366	2651	0	n/a	n/a	n/a	n/a	n/a	n/a	n/a	n/a	0.0	0.0	6.2	6.9	n/a	10.0	n/a	n/a
7	36	285	568	3551	0	n/a	n/a	n/a	n/a	n/a	n/a	n/a	n/a	0.0	0.0	6.8	7.0	n/a	12.0	n/a	n/a
8	28	287	414	3513	0	n/a	n/a	n/a	n/a	n/a	n/a	n/a	n/a	0.0	0.0	6.5	7.0	n/a	11.0	n/a	n/a
9	29	392	473	3575	0	n/a	n/a	n/a	n/a	n/a	n/a	n/a	n/a	0.0	0.0	5.9	6.7	n/a	15.0	n/a	n/a
10	25	380	388	3337	0	n/a	n/a	n/a	n/a	n/a	n/a	n/a	n/a	0.0	0.0	6.2	6.8	n/a	13.0	n/a	n/a
11	47	433	437	3826	0	n/a	n/a	n/a	n/a	n/a	n/a	n/a	n/a	0.0	0.0	6.3	6.8	n/a	14.0	n/a	n/a
12	64	480	411	3771	0	n/a	n/a	n/a	n/a	n/a	n/a	n/a	n/a	0.0	0.0	6.1	6.7	n/a	15.0	n/a	n/a
13	41	525	355	3157	0	n/a	n/a	n/a	n/a	n/a	n/a	n/a	n/a	0.0	0.0	6.1	6.8	n/a	12.0	n/a	n/a
14	45	546	429	3400	0	n/a	n/a	n/a	n/a	n/a	n/a	n/a	n/a	0.0	0.0	6.1	6.7	n/a	15.0	n/a	n/a
15	32	530	409	3210	0	n/a	n/a	n/a	n/a	n/a	n/a	n/a	n/a	0.0	0.0	6.3	6.8	n/a	13.0	n/a	n/a
16	41	441	404	3223	0	n/a	n/a	n/a	n/a	n/a	n/a	n/a	n/a	0.0	0.0	6.2	6.8	n/a	13.0	n/a	n/a
17	65	482	373	3595	0	n/a	n/a	n/a	n/a	n/a	n/a	n/a	n/a	0.0	0.0	5.8	6.6	n/a	16.0	n/a	n/a
18	44	476	434	3540	0	n/a	n/a	n/a	n/a	n/a	n/a	n/a	n/a	0.0	0.0	6.3	6.8	n/a	14.0	n/a	n/a
19	23	311	609	3873	0	n/a	n/a	n/a	n/a	n/a	n/a	n/a	n/a	0.0	0.0	6.9	7.0	n/a	13.0	n/a	n/a
20	52	592	356	2874	0	n/a	n/a	n/a	n/a	n/a	n/a	n/a	n/a	0.0	0.0	7.1	7.0	n/a	9.0	n/a	n/a
21	59	397	642	3625	0	n/a	n/a	n/a	n/a	n/a	n/a	n/a	n/a	0.0	0.0	6.7	7.0	n/a	12.0	n/a	n/a
22	67	664	558	3585	0	n/a	n/a	n/a	n/a	n/a	n/a	n/a	n/a	0.0	0.0	7.1	7.0	n/a	12.0	n/a	n/a
23	78	587	620	3494	0	n/a	n/a	n/a	n/a	n/a	n/a	n/a	n/a	0.0	0.0	6.9	7.0	n/a	12.0	n/a	n/a
24	83	414	647	3930	0	n/a	n/a	n/a	n/a	n/a	n/a	n/a	n/a	0.0	0.0	7.6	7.0	n/a	13.0	n/a	n/a



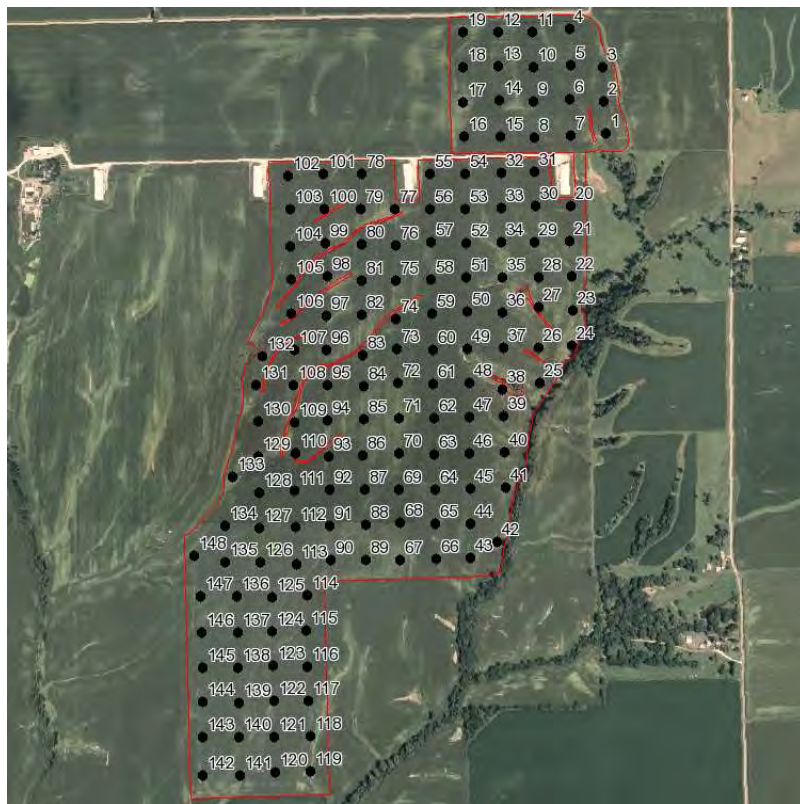
Field Sampler

Boundary & Soil Nutrients

Grower: McChesney Family Farms
Farm: Upper Place
Acres: 364.70

Field(s): MCCF 06 East of Pond

Netmapping
Riverland FS, Inc
126 South Public Square
PO Box 217
Knoxville, IL 61448
PHONE: 3092892383



Element	Average	Range
P:	48	13 - 145
K:	477	169 - 1190
Mg:	521	219 - 1395
Ca:	3225	1682 - 4900
S:	0	0 - 0
B:	N/A	N/A
Zn:	N/A	N/A
Mn:	N/A	N/A
Fe:	N/A	N/A
Cu:	N/A	N/A
Al:	N/A	N/A
Na:	N/A	N/A
SS:	N/A	N/A
NN:	0.0	0.0 - 0.0
OM:	0.0	0.0 - 0.0
pH:	6.2	5.2 - 7.8
Buffer:	6.8	5.9 - 7.0
ENR:	N/A	N/A
CeC:	13.4	8.0 - 23.0
BD:	N/A	N/A
SP:	N/A	N/A

Field No.	P	K	Mg	Ca	S	B	Zn	Mn	Fe	Cu	Al	Na	SS	NN	OM	pH	Buffer	ENR	CeC	BD	SP
	(lbs/A)	(lbs/A)	(lbs/A)	(lbs/A)	(lbs/A)	(lbs/A)	(lbs/A)	(lbs/A)	(lbs/A)	(lbs/A)	(lbs/A)	(lbs/A)	(lbs/A)	(lbs/A)	(%)			(meg)	(meg)		(%)
25	49	587	570	2862	0	n/a	n/a	n/a	n/a	n/a	n/a	n/a	n/a	0.0	0.0	6.3	6.9	n/a	12.0	n/a	n/a
26	38	419	645	2830	0	n/a	n/a	n/a	n/a	n/a	n/a	n/a	n/a	0.0	0.0	6.3	6.9	n/a	12.0	n/a	n/a
27	66	415	586	3203	0	n/a	n/a	n/a	n/a	n/a	n/a	n/a	n/a	0.0	0.0	6.6	7.0	n/a	11.0	n/a	n/a
28	63	580	387	2592	0	n/a	n/a	n/a	n/a	n/a	n/a	n/a	n/a	0.0	0.0	6.4	6.9	n/a	10.0	n/a	n/a
29	42	341	733	3281	0	n/a	n/a	n/a	n/a	n/a	n/a	n/a	n/a	0.0	0.0	6.1	6.8	n/a	14.0	n/a	n/a
30	58	537	452	3029	0	n/a	n/a	n/a	n/a	n/a	n/a	n/a	n/a	0.0	0.0	6.2	6.8	n/a	13.0	n/a	n/a
31	105	765	330	2659	0	n/a	n/a	n/a	n/a	n/a	n/a	n/a	n/a	0.0	0.0	5.7	6.6	n/a	14.0	n/a	n/a
32	66	627	393	3250	0	n/a	n/a	n/a	n/a	n/a	n/a	n/a	n/a	0.0	0.0	6.1	6.8	n/a	13.0	n/a	n/a
33	61	772	374	3030	0	n/a	n/a	n/a	n/a	n/a	n/a	n/a	n/a	0.0	0.0	6.2	6.8	n/a	13.0	n/a	n/a
34	49	481	710	3513	0	n/a	n/a	n/a	n/a	n/a	n/a	n/a	n/a	0.0	0.0	6.5	6.9	n/a	14.0	n/a	n/a
35	15	321	1326	3919	0	n/a	n/a	n/a	n/a	n/a	n/a	n/a	n/a	0.0	0.0	7.4	7.0	n/a	16.0	n/a	n/a
36	30	304	457	2515	0	n/a	n/a	n/a	n/a	n/a	n/a	n/a	n/a	0.0	0.0	5.9	6.8	n/a	11.0	n/a	n/a
37	51	280	839	4033	0	n/a	n/a	n/a	n/a	n/a	n/a	n/a	n/a	0.0	0.0	6.4	6.9	n/a	15.0	n/a	n/a
38	31	301	1395	4025	0	n/a	n/a	n/a	n/a	n/a	n/a	n/a	n/a	0.0	0.0	7.5	7.0	n/a	16.0	n/a	n/a
39	45	282	829	3444	0	n/a	n/a	n/a	n/a	n/a	n/a	n/a	n/a	0.0	0.0	6.3	6.9	n/a	14.0	n/a	n/a
40	67	479	1350	3813	0	n/a	n/a	n/a	n/a	n/a	n/a	n/a	n/a	0.0	0.0	7.6	7.0	n/a	16.0	n/a	n/a
41	45	246	820	3763	0	n/a	n/a	n/a	n/a	n/a	n/a	n/a	n/a	0.0	0.0	6.5	7.0	n/a	13.0	n/a	n/a
42	14	187	1361	3824	0	n/a	n/a	n/a	n/a	n/a	n/a	n/a	n/a	0.0	0.0	7.8	7.0	n/a	15.0	n/a	n/a
43	19	443	1292	4192	0	n/a	n/a	n/a	n/a	n/a	n/a	n/a	n/a	0.0	0.0	7.6	7.0	n/a	16.0	n/a	n/a
44	39	611	764	3235	0	n/a	n/a	n/a	n/a	n/a	n/a	n/a	n/a	0.0	0.0	6.3	6.8	n/a	14.0	n/a	n/a
45	89	877	299	2603	0	n/a	n/a	n/a	n/a	n/a	n/a	n/a	n/a	0.0	0.0	5.6	6.5	n/a	15.0	n/a	n/a
46	48	726	240	1950	0	n/a	n/a	n/a	n/a	n/a	n/a	n/a	n/a	0.0	0.0	5.4	6.5	n/a	13.0	n/a	n/a
47	65	668	276	2153	0	n/a	n/a	n/a	n/a	n/a	n/a	n/a	n/a	0.0	0.0	5.8	6.7	n/a	11.0	n/a	n/a
48	65	485	220	1682	0	n/a	n/a	n/a	n/a	n/a	n/a	n/a	n/a	0.0	0.0	5.2	6.5	n/a	12.0	n/a	n/a
49	49	351	706	3068	0	n/a	n/a	n/a	n/a	n/a	n/a	n/a	n/a	0.0	0.0	5.3	6.5	n/a	17.0	n/a	n/a



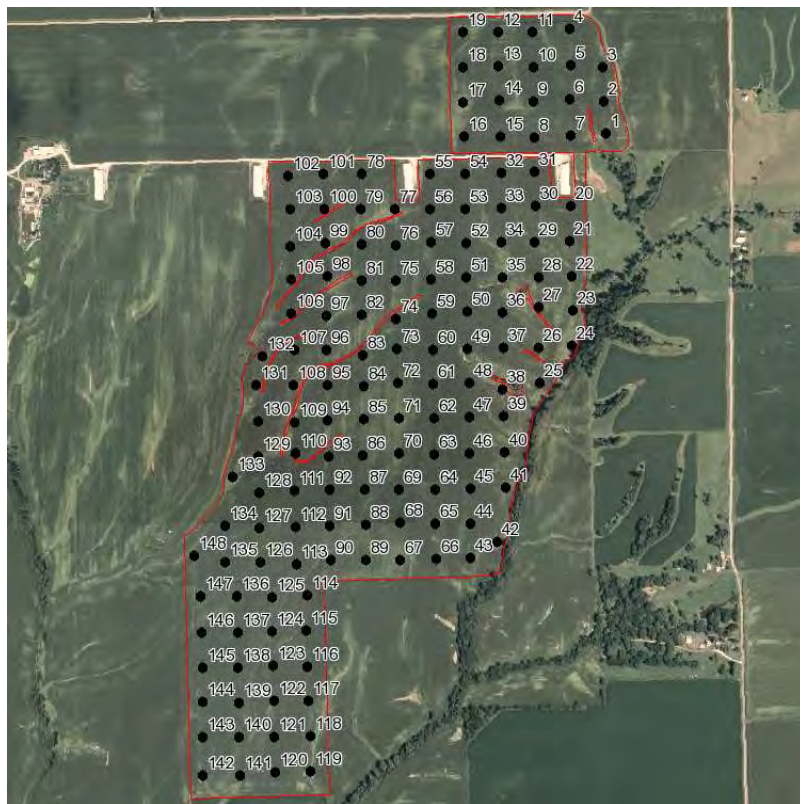
Field Sampler

Boundary & Soil Nutrients

Grower: McChesney Family Farms
Farm: Upper Place
Acres: 364.70

Field(s): MCCF 06 East of Pond

Netmapping
Riverland FS, Inc
 126 South Public Square
 PO Box 217
 Knoxville, IL 61448
 PHONE: 3092892383



Element	Average	Range
P:	48	13 - 145
K:	477	169 - 1190
Mg:	521	219 - 1395
Ca:	3225	1682 - 4900
S:	0	0 - 0
B:	N/A	N/A
Zn:	N/A	N/A
Mn:	N/A	N/A
Fe:	N/A	N/A
Cu:	N/A	N/A
Al:	N/A	N/A
Na:	N/A	N/A
SS:	N/A	N/A
NN:	0.0	0.0 - 0.0
OM:	0.0	0.0 - 0.0
pH:	6.2	5.2 - 7.8
Buffer:	6.8	5.9 - 7.0
ENR:	N/A	N/A
CeC:	13.4	8.0 - 23.0
BD:	N/A	N/A
SP:	N/A	N/A

Field No.	P	K	Mg	Ca	S	B	Zn	Mn	Fe	Cu	Al	Na	SS	NN	OM	pH	Buffer	ENR	CeC	BD	SP
	(lbs/A)	(lbs/A)	(lbs/A)	(lbs/A)	(lbs/A)	(lbs/A)	(lbs/A)	(lbs/A)	(lbs/A)	(lbs/A)	(lbs/A)	(lbs/A)	(lbs/A)	(lbs/A)	(%)			(meg)	(meg)		(%)
50	52	720	255	1854	0	n/a	n/a	n/a	n/a	n/a	n/a	n/a	n/a	0.0	0.0	5.5	6.6	n/a	11.0	n/a	n/a
51	95	1113	250	2347	0	n/a	n/a	n/a	n/a	n/a	n/a	n/a	n/a	0.0	0.0	5.9	6.7	n/a	12.0	n/a	n/a
52	93	1048	278	2590	0	n/a	n/a	n/a	n/a	n/a	n/a	n/a	n/a	0.0	0.0	5.8	6.7	n/a	13.0	n/a	n/a
53	63	901	342	2984	0	n/a	n/a	n/a	n/a	n/a	n/a	n/a	n/a	0.0	0.0	6.0	6.8	n/a	12.0	n/a	n/a
54	90	962	382	4030	0	n/a	n/a	n/a	n/a	n/a	n/a	n/a	n/a	0.0	0.0	6.3	6.9	n/a	14.0	n/a	n/a
55	31	472	390	2992	0	n/a	n/a	n/a	n/a	n/a	n/a	n/a	n/a	0.0	0.0	6.3	6.9	n/a	11.0	n/a	n/a
56	28	524	358	2550	0	n/a	n/a	n/a	n/a	n/a	n/a	n/a	n/a	0.0	0.0	5.5	6.5	n/a	15.0	n/a	n/a
57	58	794	310	2896	0	n/a	n/a	n/a	n/a	n/a	n/a	n/a	n/a	0.0	0.0	5.9	6.7	n/a	13.0	n/a	n/a
58	22	484	547	3530	0	n/a	n/a	n/a	n/a	n/a	n/a	n/a	n/a	0.0	0.0	6.2	6.8	n/a	14.0	n/a	n/a
59	78	588	308	3481	0	n/a	n/a	n/a	n/a	n/a	n/a	n/a	n/a	0.0	0.0	6.4	6.9	n/a	12.0	n/a	n/a
60	79	691	317	3264	0	n/a	n/a	n/a	n/a	n/a	n/a	n/a	n/a	0.0	0.0	6.0	6.7	n/a	14.0	n/a	n/a
61	52	530	317	2988	0	n/a	n/a	n/a	n/a	n/a	n/a	n/a	n/a	0.0	0.0	6.0	6.8	n/a	12.0	n/a	n/a
62	54	600	356	3251	0	n/a	n/a	n/a	n/a	n/a	n/a	n/a	n/a	0.0	0.0	6.0	6.8	n/a	13.0	n/a	n/a
63	46	469	397	3839	0	n/a	n/a	n/a	n/a	n/a	n/a	n/a	n/a	0.0	0.0	5.7	6.6	n/a	17.0	n/a	n/a
64	39	514	350	2998	0	n/a	n/a	n/a	n/a	n/a	n/a	n/a	n/a	0.0	0.0	6.1	6.8	n/a	12.0	n/a	n/a
65	46	406	570	3452	0	n/a	n/a	n/a	n/a	n/a	n/a	n/a	n/a	0.0	0.0	6.0	6.8	n/a	14.0	n/a	n/a
66	71	535	572	3737	0	n/a	n/a	n/a	n/a	n/a	n/a	n/a	n/a	0.0	0.0	6.7	7.0	n/a	12.0	n/a	n/a
67	45	625	346	3182	0	n/a	n/a	n/a	n/a	n/a	n/a	n/a	n/a	0.0	0.0	6.5	6.9	n/a	11.0	n/a	n/a
68	43	553	335	3109	0	n/a	n/a	n/a	n/a	n/a	n/a	n/a	n/a	0.0	0.0	6.3	6.9	n/a	11.0	n/a	n/a
69	20	587	517	3771	0	n/a	n/a	n/a	n/a	n/a	n/a	n/a	n/a	0.0	0.0	6.3	6.8	n/a	15.0	n/a	n/a
70	43	696	531	4348	0	n/a	n/a	n/a	n/a	n/a	n/a	n/a	n/a	0.0	0.0	5.9	6.6	n/a	19.0	n/a	n/a
71	40	563	393	3666	0	n/a	n/a	n/a	n/a	n/a	n/a	n/a	n/a	0.0	0.0	6.2	6.8	n/a	14.0	n/a	n/a
72	43	559	368	3546	0	n/a	n/a	n/a	n/a	n/a	n/a	n/a	n/a	0.0	0.0	6.6	7.0	n/a	11.0	n/a	n/a
73	25	533	348	3292	0	n/a	n/a	n/a	n/a	n/a	n/a	n/a	n/a	0.0	0.0	5.9	6.7	n/a	14.0	n/a	n/a
74	13	432	1087	4594	0	n/a	n/a	n/a	n/a	n/a	n/a	n/a	n/a	0.0	0.0	7.6	7.0	n/a	17.0	n/a	n/a



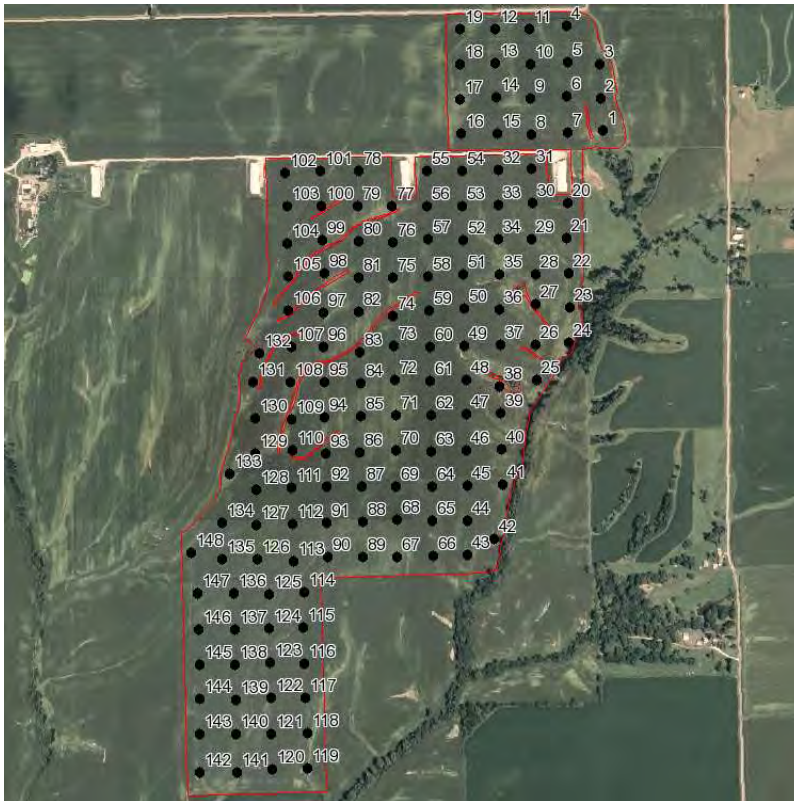
Field Sampler

Boundary & Soil Nutrients

Grower: McChesney Family Farms
Farm: Upper Place
Acres: 364.70

Field(s): MCCF 06 East of Pond

Netmapping
Riverland FS, Inc
126 South Public Square
PO Box 217
Knoxville, IL 61448
PHONE: 3092892383



Element	Average	Range
P:	48	13 - 145
K:	477	169 - 1190
Mg:	521	219 - 1395
Ca:	3225	1682 - 4900
S:	0	0 - 0
B:	N/A	N/A
Zn:	N/A	N/A
Mn:	N/A	N/A
Fe:	N/A	N/A
Cu:	N/A	N/A
Al:	N/A	N/A
Na:	N/A	N/A
SS:	N/A	N/A
NN:	0.0	0.0 - 0.0
OM:	0.0	0.0 - 0.0
pH:	6.2	5.2 - 7.8
Buffer:	6.8	5.9 - 7.0
ENR:	N/A	N/A
CeC:	13.4	8.0 - 23.0
BD:	N/A	N/A
SP:	N/A	N/A

Field No.	P	K	Mg	Ca	S	B	Zn	Mn	Fe	Cu	Al	Na	SS	NN	OM	pH	Buffer	ENR	CeC	BD	SP
	(lbs/A)	(lbs/A)	(lbs/A)	(lbs/A)	(lbs/A)	(lbs/A)	(lbs/A)	(lbs/A)	(lbs/A)	(lbs/A)	(lbs/A)	(lbs/A)	(lbs/A)	(lbs/A)	(%)			(meg)	(meg)		(%)
75	31	617	452	3300	0	n/a	n/a	n/a	n/a	n/a	n/a	n/a	n/a	0.0	0.0	6.0	6.8	n/a	13.0	n/a	n/a
76	54	753	266	2482	0	n/a	n/a	n/a	n/a	n/a	n/a	n/a	n/a	0.0	0.0	5.5	6.6	n/a	13.0	n/a	n/a
77	29	483	568	3429	0	n/a	n/a	n/a	n/a	n/a	n/a	n/a	n/a	0.0	0.0	5.9	6.7	n/a	15.0	n/a	n/a
78	39	833	356	2806	0	n/a	n/a	n/a	n/a	n/a	n/a	n/a	n/a	0.0	0.0	6.2	6.9	n/a	11.0	n/a	n/a
79	23	516	496	3116	0	n/a	n/a	n/a	n/a	n/a	n/a	n/a	n/a	0.0	0.0	5.9	6.7	n/a	14.0	n/a	n/a
80	21	364	627	3738	0	n/a	n/a	n/a	n/a	n/a	n/a	n/a	n/a	0.0	0.0	6.4	6.9	n/a	14.0	n/a	n/a
81	47	664	348	3070	0	n/a	n/a	n/a	n/a	n/a	n/a	n/a	n/a	0.0	0.0	6.0	6.7	n/a	14.0	n/a	n/a
82	17	410	391	3078	0	n/a	n/a	n/a	n/a	n/a	n/a	n/a	n/a	0.0	0.0	6.4	6.9	n/a	11.0	n/a	n/a
83	16	304	1170	4322	0	n/a	n/a	n/a	n/a	n/a	n/a	n/a	n/a	0.0	0.0	7.4	7.0	n/a	16.0	n/a	n/a
84	51	540	373	3384	0	n/a	n/a	n/a	n/a	n/a	n/a	n/a	n/a	0.0	0.0	5.8	6.6	n/a	16.0	n/a	n/a
85	49	523	430	3994	0	n/a	n/a	n/a	n/a	n/a	n/a	n/a	n/a	0.0	0.0	5.8	6.6	n/a	17.0	n/a	n/a
86	61	839	454	4463	0	n/a	n/a	n/a	n/a	n/a	n/a	n/a	n/a	0.0	0.0	6.2	6.8	n/a	17.0	n/a	n/a
87	22	513	533	3774	0	n/a	n/a	n/a	n/a	n/a	n/a	n/a	n/a	0.0	0.0	6.2	6.8	n/a	15.0	n/a	n/a
88	14	445	607	4585	0	n/a	n/a	n/a	n/a	n/a	n/a	n/a	n/a	0.0	0.0	6.6	7.0	n/a	15.0	n/a	n/a
89	78	907	437	4622	0	n/a	n/a	n/a	n/a	n/a	n/a	n/a	n/a	0.0	0.0	6.6	7.0	n/a	15.0	n/a	n/a
90	27	425	555	3259	0	n/a	n/a	n/a	n/a	n/a	n/a	n/a	n/a	0.0	0.0	5.7	6.6	n/a	16.0	n/a	n/a
91	68	875	310	2881	0	n/a	n/a	n/a	n/a	n/a	n/a	n/a	n/a	0.0	0.0	5.7	6.5	n/a	16.0	n/a	n/a
92	46	660	355	3270	0	n/a	n/a	n/a	n/a	n/a	n/a	n/a	n/a	0.0	0.0	5.9	6.6	n/a	15.0	n/a	n/a
93	33	362	423	2834	0	n/a	n/a	n/a	n/a	n/a	n/a	n/a	n/a	0.0	0.0	5.8	6.6	n/a	14.0	n/a	n/a
94	42	464	290	2275	0	n/a	n/a	n/a	n/a	n/a	n/a	n/a	n/a	0.0	0.0	5.9	6.7	n/a	11.0	n/a	n/a
95	49	415	316	2012	0	n/a	n/a	n/a	n/a	n/a	n/a	n/a	n/a	0.0	0.0	5.7	6.7	n/a	11.0	n/a	n/a
96	46	376	691	3261	0	n/a	n/a	n/a	n/a	n/a	n/a	n/a	n/a	0.0	0.0	5.8	6.6	n/a	16.0	n/a	n/a
97	35	360	545	3111	0	n/a	n/a	n/a	n/a	n/a	n/a	n/a	n/a	0.0	0.0	5.7	6.6	n/a	15.0	n/a	n/a
98	32	309	341	2252	0	n/a	n/a	n/a	n/a	n/a	n/a	n/a	n/a	0.0	0.0	5.8	6.7	n/a	11.0	n/a	n/a
99	48	340	642	3389	0	n/a	n/a	n/a	n/a	n/a	n/a	n/a	n/a	0.0	0.0	5.7	6.6	n/a	16.0	n/a	n/a



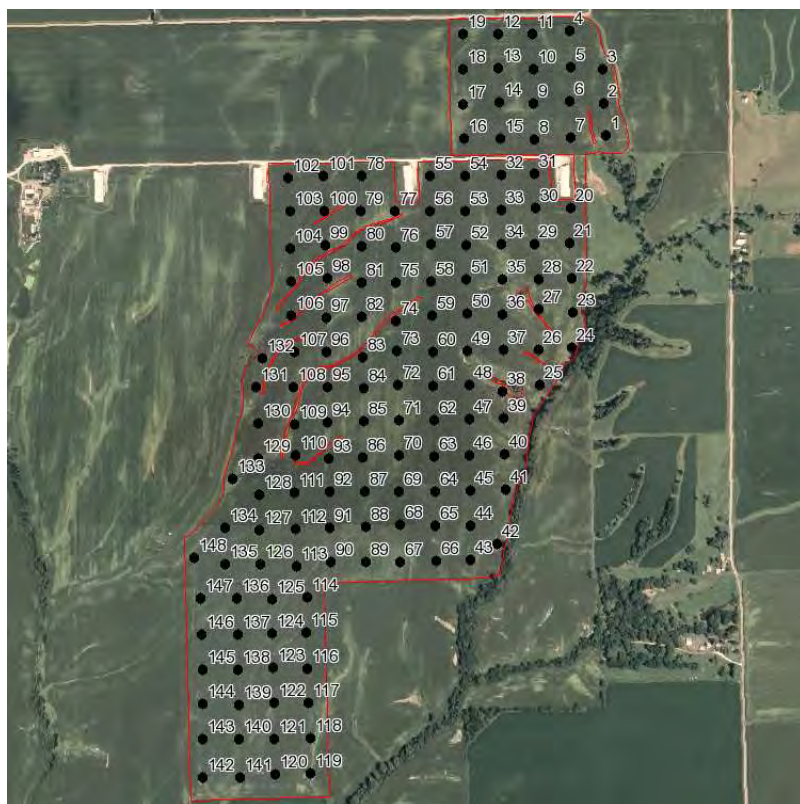
Field Sampler

Boundary & Soil Nutrients

Grower: McChesney Family Farms
Farm: Upper Place
Acres: 364.70

Field(s): MCCF 06 East of Pond

Netmapping
Riverland FS, Inc
 126 South Public Square
 PO Box 217
 Knoxville, IL 61448
 PHONE: 3092892383



Element	Average	Range
P:	48	13 - 145
K:	477	169 - 1190
Mg:	521	219 - 1395
Ca:	3225	1682 - 4900
S:	0	0 - 0
B:	N/A	N/A
Zn:	N/A	N/A
Mn:	N/A	N/A
Fe:	N/A	N/A
Cu:	N/A	N/A
Al:	N/A	N/A
Na:	N/A	N/A
SS:	N/A	N/A
NN:	0.0	0.0 - 0.0
OM:	0.0	0.0 - 0.0
pH:	6.2	5.2 - 7.8
Buffer:	6.8	5.9 - 7.0
ENR:	N/A	N/A
CeC:	13.4	8.0 - 23.0
BD:	N/A	N/A
SP:	N/A	N/A

Field No.	P	K	Mg	Ca	S	B	Zn	Mn	Fe	Cu	Al	Na	SS	NN	OM	pH	Buffer	ENR	CeC	BD	SP
	(lbs/A)	(lbs/A)	(lbs/A)	(lbs/A)	(lbs/A)	(lbs/A)	(lbs/A)	(lbs/A)	(lbs/A)	(lbs/A)	(lbs/A)	(lbs/A)	(lbs/A)	(lbs/A)	(%)			(meg)	(meg)		(%)
100	33	284	719	3267	0	n/a	n/a	n/a	n/a	n/a	n/a	n/a	n/a	0.0	0.0	5.5	6.5	n/a	18.0	n/a	n/a
101	33	487	451	2912	0	n/a	n/a	n/a	n/a	n/a	n/a	n/a	n/a	0.0	0.0	5.5	6.5	n/a	16.0	n/a	n/a
102	23	336	334	2805	0	n/a	n/a	n/a	n/a	n/a	n/a	n/a	n/a	0.0	0.0	6.5	6.9	n/a	10.0	n/a	n/a
103	28	226	508	3409	0	n/a	n/a	n/a	n/a	n/a	n/a	n/a	n/a	0.0	0.0	6.8	7.0	n/a	11.0	n/a	n/a
104	91	484	566	2675	0	n/a	n/a	n/a	n/a	n/a	n/a	n/a	n/a	0.0	0.0	6.1	6.8	n/a	12.0	n/a	n/a
105	41	169	1051	3531	0	n/a	n/a	n/a	n/a	n/a	n/a	n/a	n/a	0.0	0.0	6.1	6.8	n/a	16.0	n/a	n/a
106	89	244	609	2855	0	n/a	n/a	n/a	n/a	n/a	n/a	n/a	n/a	0.0	0.0	5.4	6.4	n/a	17.0	n/a	n/a
107	85	448	454	2787	0	n/a	n/a	n/a	n/a	n/a	n/a	n/a	n/a	0.0	0.0	5.8	6.7	n/a	13.0	n/a	n/a
108	145	1190	630	2908	0	n/a	n/a	n/a	n/a	n/a	n/a	n/a	n/a	0.0	0.0	6.4	6.9	n/a	13.0	n/a	n/a
109	67	451	516	2704	0	n/a	n/a	n/a	n/a	n/a	n/a	n/a	n/a	0.0	0.0	5.7	6.6	n/a	14.0	n/a	n/a
110	44	271	806	3513	0	n/a	n/a	n/a	n/a	n/a	n/a	n/a	n/a	0.0	0.0	6.0	6.7	n/a	16.0	n/a	n/a
111	106	671	255	2336	0	n/a	n/a	n/a	n/a	n/a	n/a	n/a	n/a	0.0	0.0	5.5	6.5	n/a	14.0	n/a	n/a
112	55	566	331	2474	0	n/a	n/a	n/a	n/a	n/a	n/a	n/a	n/a	0.0	0.0	5.3	6.4	n/a	16.0	n/a	n/a
113	46	344	525	2783	0	n/a	n/a	n/a	n/a	n/a	n/a	n/a	n/a	0.0	0.0	5.8	6.7	n/a	13.0	n/a	n/a
114	51	351	388	2878	0	n/a	n/a	n/a	n/a	n/a	n/a	n/a	n/a	0.0	0.0	6.5	6.9	n/a	10.0	n/a	n/a
115	35	292	534	3524	0	n/a	n/a	n/a	n/a	n/a	n/a	n/a	n/a	0.0	0.0	6.3	6.8	n/a	14.0	n/a	n/a
116	50	313	418	3160	0	n/a	n/a	n/a	n/a	n/a	n/a	n/a	n/a	0.0	0.0	6.2	6.8	n/a	12.0	n/a	n/a
117	55	337	462	3349	0	n/a	n/a	n/a	n/a	n/a	n/a	n/a	n/a	0.0	0.0	6.6	7.0	n/a	11.0	n/a	n/a
118	50	408	620	3207	0	n/a	n/a	n/a	n/a	n/a	n/a	n/a	n/a	0.0	0.0	6.5	6.9	n/a	12.0	n/a	n/a
119	55	452	741	3598	0	n/a	n/a	n/a	n/a	n/a	n/a	n/a	n/a	0.0	0.0	7.2	7.0	n/a	13.0	n/a	n/a
120	38	345	457	2729	0	n/a	n/a	n/a	n/a	n/a	n/a	n/a	n/a	0.0	0.0	5.8	6.6	n/a	14.0	n/a	n/a
121	65	430	384	2721	0	n/a	n/a	n/a	n/a	n/a	n/a	n/a	n/a	0.0	0.0	6.1	6.7	n/a	13.0	n/a	n/a
122	28	299	832	3964	0	n/a	n/a	n/a	n/a	n/a	n/a	n/a	n/a	0.0	0.0	6.6	6.9	n/a	15.0	n/a	n/a
123	27	310	791	4095	0	n/a	n/a	n/a	n/a	n/a	n/a	n/a	n/a	0.0	0.0	6.7	7.0	n/a	14.0	n/a	n/a
124	15	248	787	3380	0	n/a	n/a	n/a	n/a	n/a	n/a	n/a	n/a	0.0	0.0	6.3	6.8	n/a	14.0	n/a	n/a



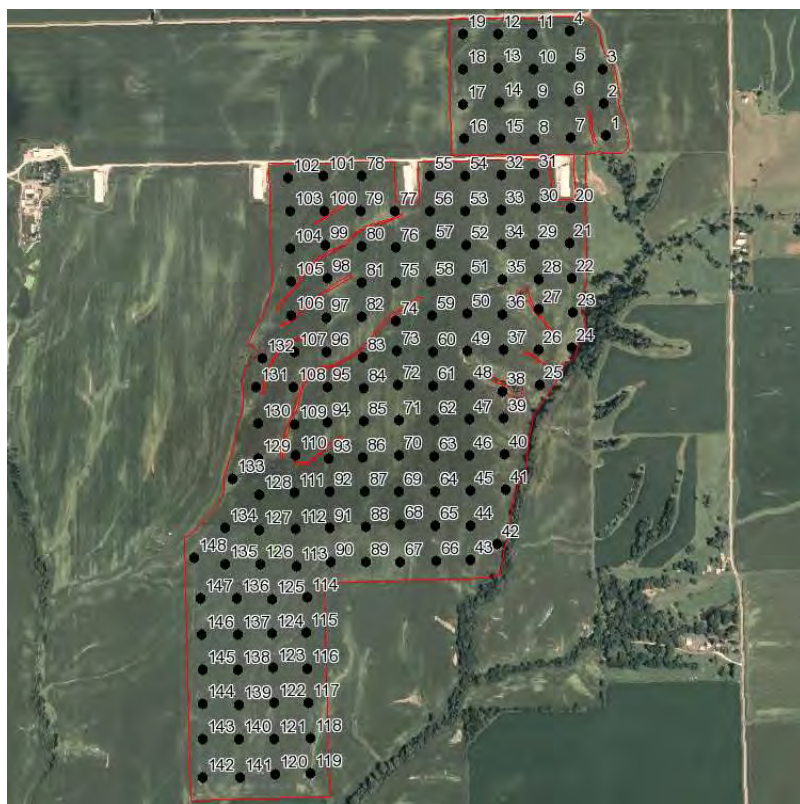
Field Sampler

Boundary & Soil Nutrients

Grower: McChesney Family Farms
Farm: Upper Place
Acres: 364.70

Field(s): MCCF 06 East of Pond

Netmapping
Riverland FS, Inc
 126 South Public Square
 PO Box 217
 Knoxville, IL 61448
 PHONE: 3092892383



Element	Average	Range
P:	48	13 - 145
K:	477	169 - 1190
Mg:	521	219 - 1395
Ca:	3225	1682 - 4900
S:	0	0 - 0
B:	N/A	N/A
Zn:	N/A	N/A
Mn:	N/A	N/A
Fe:	N/A	N/A
Cu:	N/A	N/A
Al:	N/A	N/A
Na:	N/A	N/A
SS:	N/A	N/A
NN:	0.0	0.0 - 0.0
OM:	0.0	0.0 - 0.0
pH:	6.2	5.2 - 7.8
Buffer:	6.8	5.9 - 7.0
ENR:	N/A	N/A
CeC:	13.4	8.0 - 23.0
BD:	N/A	N/A
SP:	N/A	N/A

Field No.	P	K	Mg	Ca	S	B	Zn	Mn	Fe	Cu	Al	Na	SS	NN	OM	pH	Buffer	ENR	CeC	BD	SP
	(lbs/A)	(lbs/A)	(lbs/A)	(lbs/A)	(lbs/A)	(lbs/A)	(lbs/A)	(lbs/A)	(lbs/A)	(lbs/A)	(lbs/A)	(lbs/A)	(lbs/A)	(lbs/A)	(%)			(meg)	(meg)		(%)
125	26	252	551	2894	0	n/a	n/a	n/a	n/a	n/a	n/a	n/a	n/a	0.0	0.0	5.8	6.6	n/a	15.0	n/a	n/a
126	31	585	444	3022	0	n/a	n/a	n/a	n/a	n/a	n/a	n/a	n/a	0.0	0.0	5.7	6.5	n/a	16.0	n/a	n/a
127	34	445	318	2326	0	n/a	n/a	n/a	n/a	n/a	n/a	n/a	n/a	0.0	0.0	5.9	6.7	n/a	11.0	n/a	n/a
128	52	428	252	1716	0	n/a	n/a	n/a	n/a	n/a	n/a	n/a	n/a	0.0	0.0	5.4	6.6	n/a	11.0	n/a	n/a
129	37	251	648	3185	0	n/a	n/a	n/a	n/a	n/a	n/a	n/a	n/a	0.0	0.0	6.2	6.8	n/a	13.0	n/a	n/a
130	43	359	280	2057	0	n/a	n/a	n/a	n/a	n/a	n/a	n/a	n/a	0.0	0.0	6.2	6.9	n/a	8.0	n/a	n/a
131	61	239	829	3575	0	n/a	n/a	n/a	n/a	n/a	n/a	n/a	n/a	0.0	0.0	6.0	6.7	n/a	16.0	n/a	n/a
132	54	265	890	3655	0	n/a	n/a	n/a	n/a	n/a	n/a	n/a	n/a	0.0	0.0	6.3	6.9	n/a	14.0	n/a	n/a
133	18	311	768	4900	0	n/a	n/a	n/a	n/a	n/a	n/a	n/a	n/a	0.0	0.0	7.7	7.0	n/a	16.0	n/a	n/a
134	49	418	299	2380	0	n/a	n/a	n/a	n/a	n/a	n/a	n/a	n/a	0.0	0.0	5.7	6.6	n/a	13.0	n/a	n/a
135	74	455	219	1787	0	n/a	n/a	n/a	n/a	n/a	n/a	n/a	n/a	0.0	0.0	5.5	6.6	n/a	11.0	n/a	n/a
136	83	255	275	2389	0	n/a	n/a	n/a	n/a	n/a	n/a	n/a	n/a	0.0	0.0	6.5	6.9	n/a	9.0	n/a	n/a
137	51	296	379	2973	0	n/a	n/a	n/a	n/a	n/a	n/a	n/a	n/a	0.0	0.0	5.9	5.9	n/a	23.0	n/a	n/a
138	56	391	420	3849	0	n/a	n/a	n/a	n/a	n/a	n/a	n/a	n/a	0.0	0.0	7.1	7.0	n/a	12.0	n/a	n/a
139	41	374	447	3027	0	n/a	n/a	n/a	n/a	n/a	n/a	n/a	n/a	0.0	0.0	6.2	6.8	n/a	12.0	n/a	n/a
140	36	234	854	3628	0	n/a	n/a	n/a	n/a	n/a	n/a	n/a	n/a	0.0	0.0	6.4	6.9	n/a	14.0	n/a	n/a
141	61	463	550	3155	0	n/a	n/a	n/a	n/a	n/a	n/a	n/a	n/a	0.0	0.0	6.3	6.8	n/a	13.0	n/a	n/a
142	57	406	739	3787	0	n/a	n/a	n/a	n/a	n/a	n/a	n/a	n/a	0.0	0.0	7.6	7.0	n/a	13.0	n/a	n/a
143	98	677	517	2988	0	n/a	n/a	n/a	n/a	n/a	n/a	n/a	n/a	0.0	0.0	6.4	6.9	n/a	12.0	n/a	n/a
144	38	278	436	3576	0	n/a	n/a	n/a	n/a	n/a	n/a	n/a	n/a	0.0	0.0	6.5	6.9	n/a	12.0	n/a	n/a
145	74	369	419	3927	0	n/a	n/a	n/a	n/a	n/a	n/a	n/a	n/a	0.0	0.0	6.5	6.9	n/a	13.0	n/a	n/a
146	59	315	349	3104	0	n/a	n/a	n/a	n/a	n/a	n/a	n/a	n/a	0.0	0.0	5.9	6.7	n/a	13.0	n/a	n/a
147	30	306	569	3050	0	n/a	n/a	n/a	n/a	n/a	n/a	n/a	n/a	0.0	0.0	6.2	6.8	n/a	13.0	n/a	n/a
148	36	591	402	2754	0	n/a	n/a	n/a	n/a	n/a	n/a	n/a	n/a	0.0	0.0	6.2	6.8	n/a	12.0	n/a	n/a

