

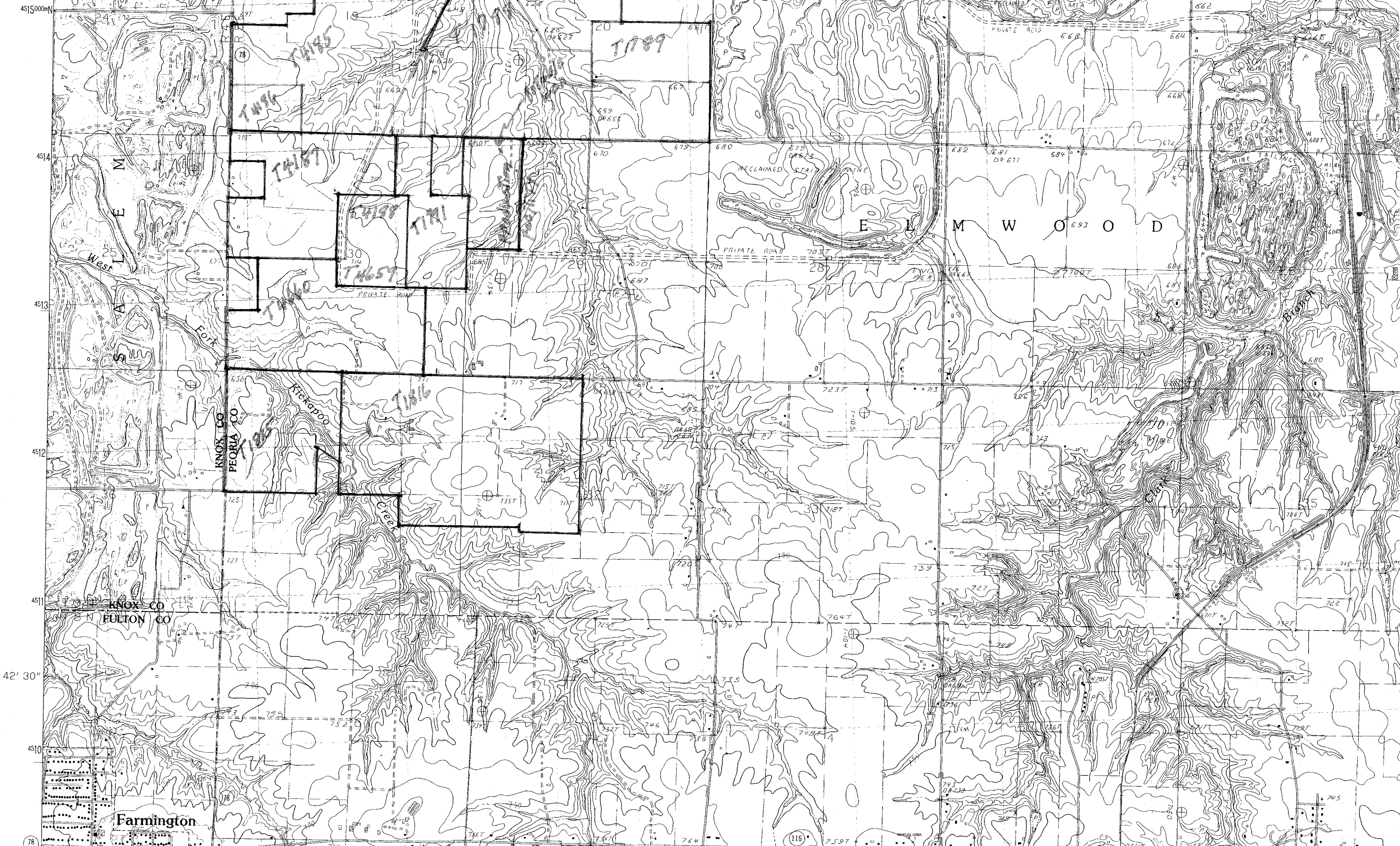
UNITED STATES
DEPARTMENT OF THE INTERIOR
GEOLOGICAL SURVEY

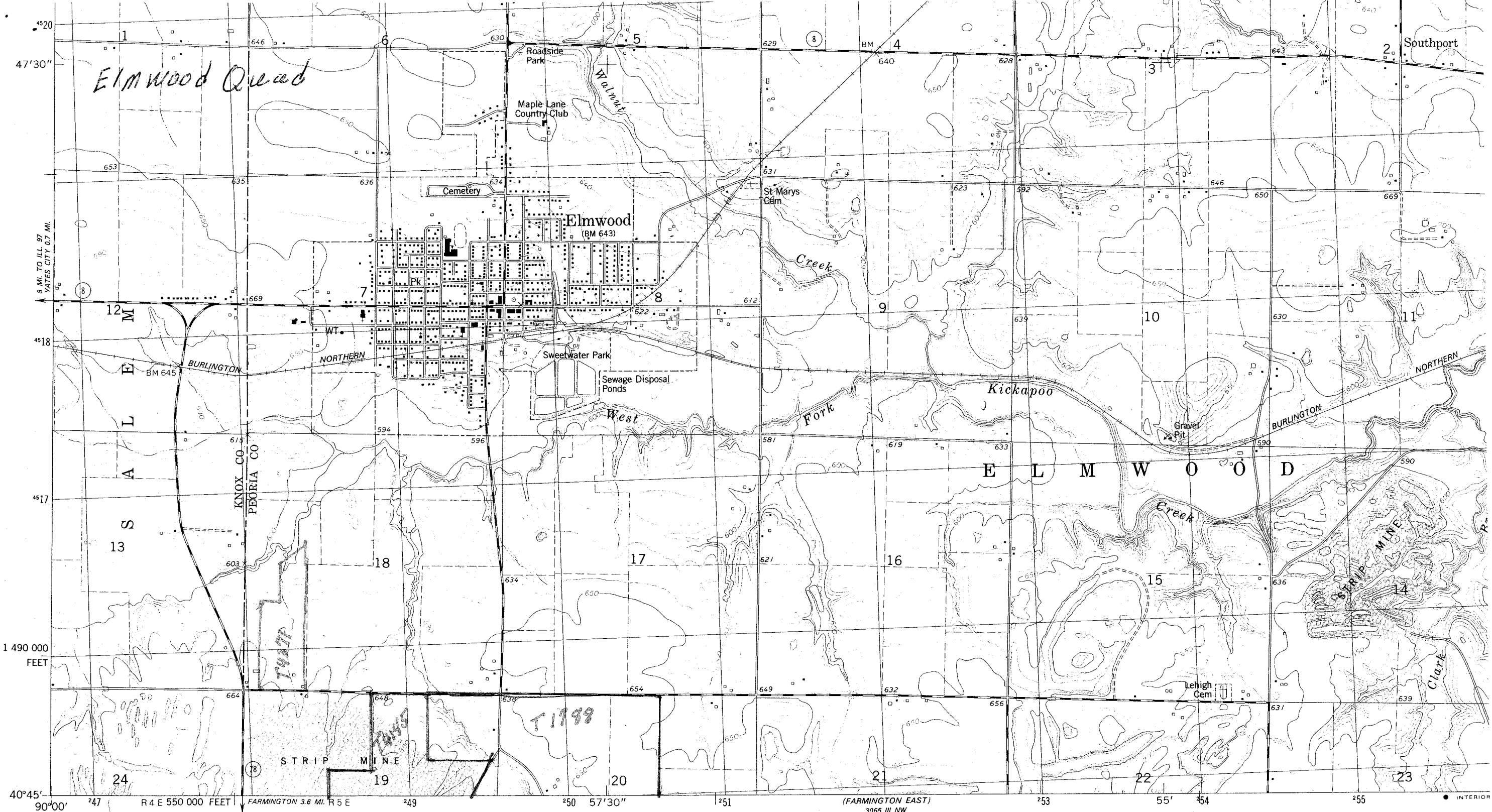
Farmington East Quad

FARM

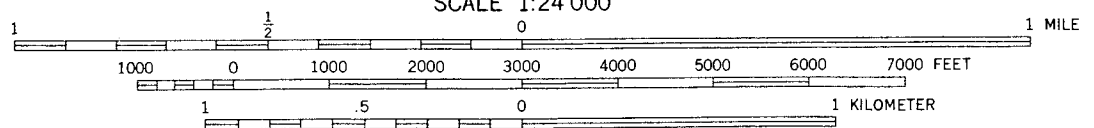
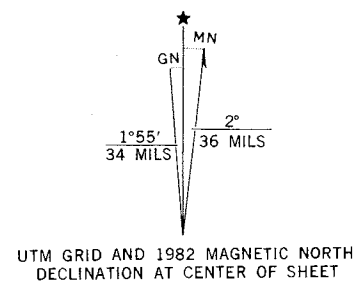
7.5 MI

90° 00' 247000mE 248 249 250 57' 30" 251 252 253 55' 254 255
40° 45' 4515000mN





Mapped, edited, and published by the Geological Survey
 Control by USGS and NOS/NOAA
 Topography by photogrammetric methods from aerial photographs taken 1975. Field checked 1979. Map edited 1982
 Projection and 10,000-foot grid ticks: Illinois coordinate system, west zone (transverse Mercator)
 1000-meter Universal Transverse Mercator grid, zone 16 1927 North American Datum
 To place on the predicted North American Datum 1983 move the projection lines 1 meter north and 9 meters east as shown by dashed corner ticks
 Fine red dashed lines indicate selected fence and field lines where generally visible on aerial photographs. This information is unchecked



CONTOUR INTERVAL 10 FEET
 DOTTED LINES REPRESENT 5-FOOT CONTOURS
 NATIONAL GEODETIC VERTICAL DATUM OF 1929



Primary highway, hard surface
 Secondary highway, hard surface
 Interstate R.

THIS MAP COMPLIES WITH NATIONAL MAP ACCURACY STANDARDS
 FOR SALE BY U. S. GEOLOGICAL SURVEY, RESTON, VIRGINIA 22092
 AND BY THE STATE GEOLOGICAL SURVEY, CHAMPAIGN, ILLINOIS 61820
 A FOLDER DESCRIBING TOPOGRAPHIC MAPS AND SYMBOLS IS AVAILABLE ON REQUEST

(FARMINGTON WEST)
 2985 II NE