

MANURE APPLICATION SETBACK MAP



MAURER-STUTZ

ENGINEERS SURVEYORS

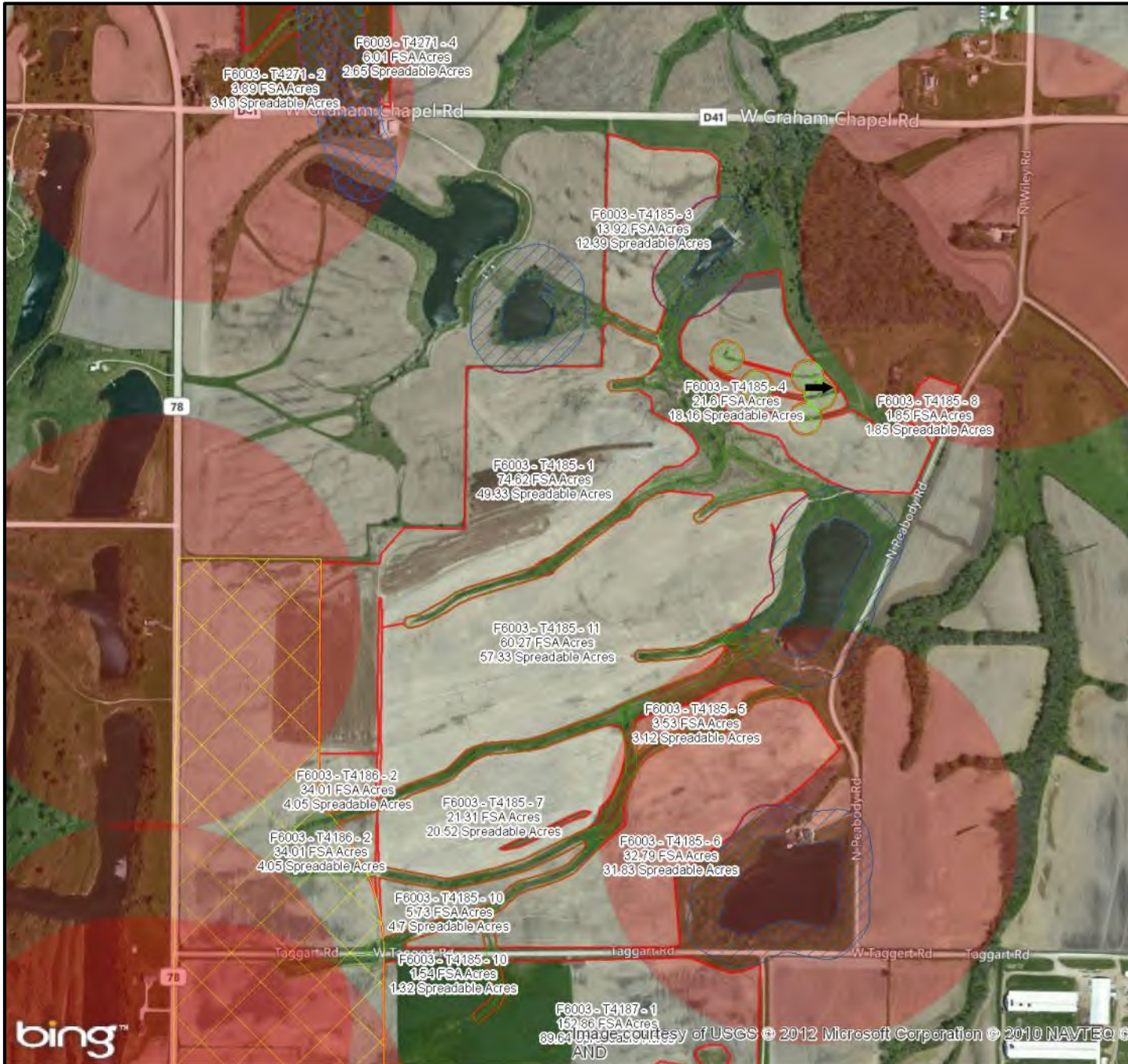
maurerstutzinc.com

Date Saved: 10/16/2012 3:48:00 PM

Elmwood Farms

North of Taggart Road

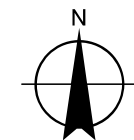
All manure and wastewater shall be injected subsurface or incorporated.



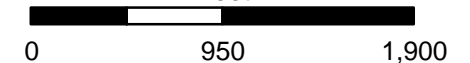
Legend

Buffers and Setbacks

- 100 Year Flood Plain Boundary
- 100' Subsurface Drain Intake or 35' Veg. Buffer
- 1320' Residential Incorporation/Injection Zone
- 200' Drainage Ditch
- 200' Potable Water Supply Well
- 200' Stream
- 200' Surface Water
- 35' Veg. Waterway
- NO Application
- SURETY CLU FIELDS



Feet



MANURE APPLICATION SETBACK MAP



MAURER-STUTZ

ENGINEERS SURVEYORS

maurerstutzinc.com

Date Saved: 10/16/2012 3:48:00 PM

Elmwood Farms

North of Graham Chapel Road

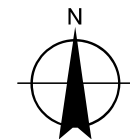
All manure and wastewater shall be injected subsurface or incorporated.



Legend

Buffers and Setbacks

- 100 Year Flood Plain Boundary
- 100' Subsurface Drain Intake or 35' Veg. Buffer
- 1320' Residential Incorporation/Injection Zone
- 200' Drainage Ditch
- 200' Potable Water Supply Well
- 200' Stream
- 200' Surface Water
- 35' Veg. Waterway
- NO Application
- SURETY CLU FIELDS



Feet

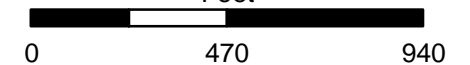


Image courtesy of USGS © 2012 Microsoft Corporation © 2010 NAVTEQ © AND

MANURE APPLICATION SETBACK MAP



MAURER-STUTZ

ENGINEERS SURVEYORS

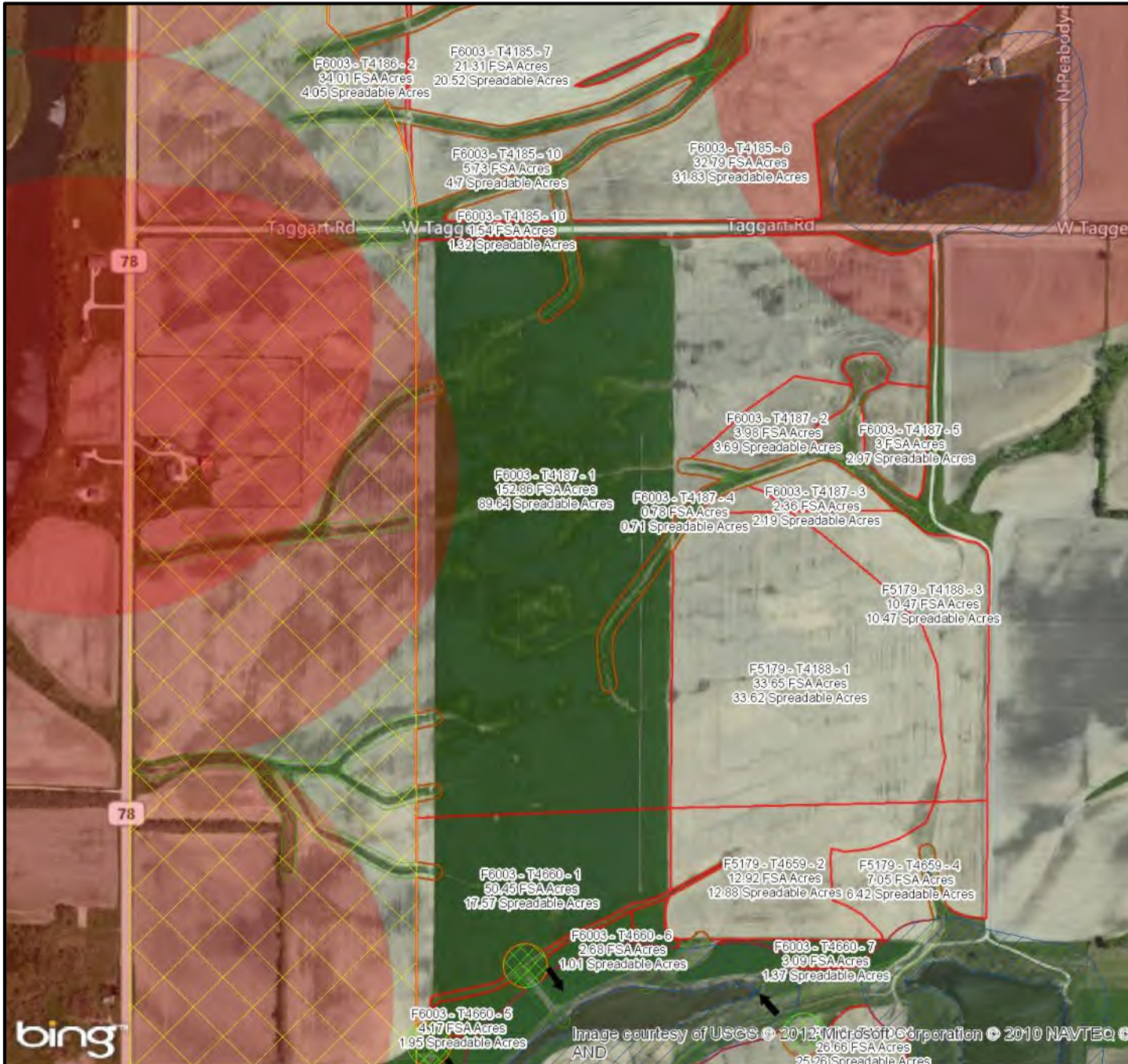
maurerstutzinc.com

Date Saved: 10/16/2012 3:48:00 PM

Elmwood Farms

South of Taggart Road

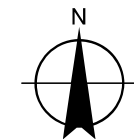
All manure and wastewater shall be injected subsurface or incorporated.



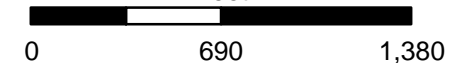
Legend

Buffers and Setbacks

- 100 Year Flood Plain Boundary
- 100' Subsurface Drain Intake or 35' Veg. Buffer
- 1320' Residential Incorporation/Injection Zone
- 200' Drainage Ditch
- 200' Potable Water Supply Well
- 200' Stream
- 200' Surface Water
- 35' Veg. Waterway
- NO Application
- SURETY CLU FIELDS



Feet



bing

Image courtesy of USGS © 2012 Microsoft Corporation © 2010 NAVTEQ © AND

MANURE APPLICATION SETBACK MAP



MAURER-STUTZ

ENGINEERS SURVEYORS

maurerstutzinc.com

Date Saved: 10/16/2012 3:48:00 PM

Elmwood Farms

North of Korth Road

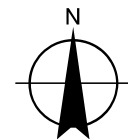
All manure and wastewater shall be injected subsurface or incorporated.



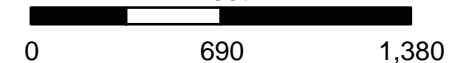
Legend

Buffers and Setbacks

- 100 Year Flood Plain Boundary
- 100' Subsurface Drain Intake or 35' Veg. Buffer
- 1320' Residential Incorporation/Injection Zone
- 200' Drainage Ditch
- 200' Potable Water Supply Well
- 200' Stream
- 200' Surface Water
- 35' Veg. Waterway
- NO Application
- SURETY CLU FIELDS



Feet



bing™

Image courtesy of USGS © 2012 Microsoft Corporation © 2010 NAVTEQ © AND

MANURE APPLICATION SETBACK MAP



MAURER-STUTZ

ENGINEERS SURVEYORS

maurerstutzinc.com

Date Saved: 10/16/2012 3:48:00 PM











Elmwood Farms

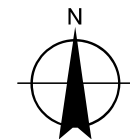
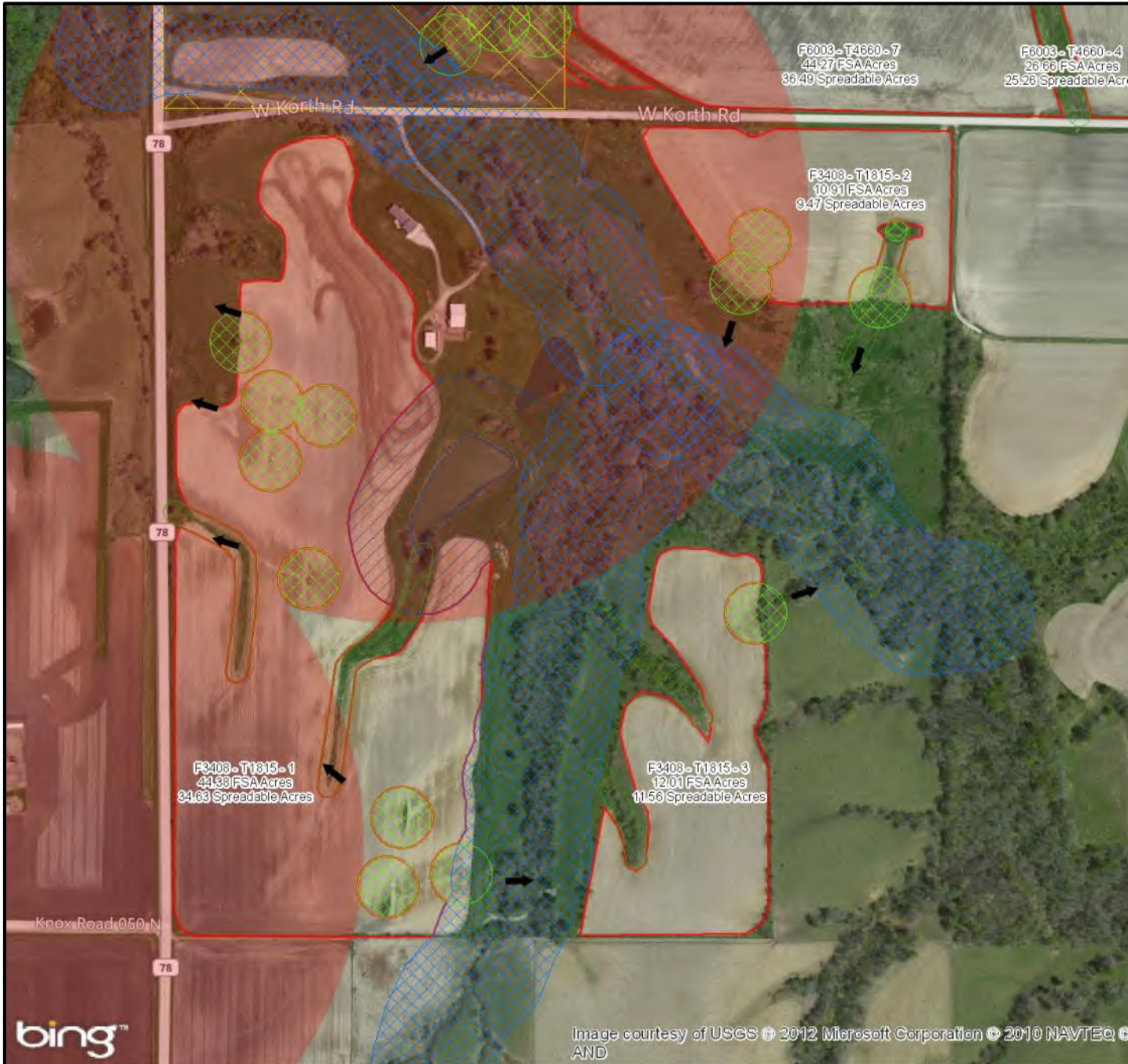
South of Korth Road

All manure and wastewater shall be injected subsurface or incorporated.

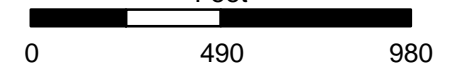
Legend

Buffers and Setbacks

-  100 Year Flood Plain Boundary
-  100' Subsurface Drain Intake or 35' Veg. Buffer
-  1320' Residential Incorporation/Injection Zone
-  200' Drainage Ditch
-  200' Potable Water Supply Well
-  200' Stream
-  200' Surface Water
-  35' Veg. Waterway
-  NO Application
-  SURETY CLU FIELDS



Feet



bing™

Image courtesy of USGS © 2012 Microsoft Corporation © 2010 NAVTEQ © AND