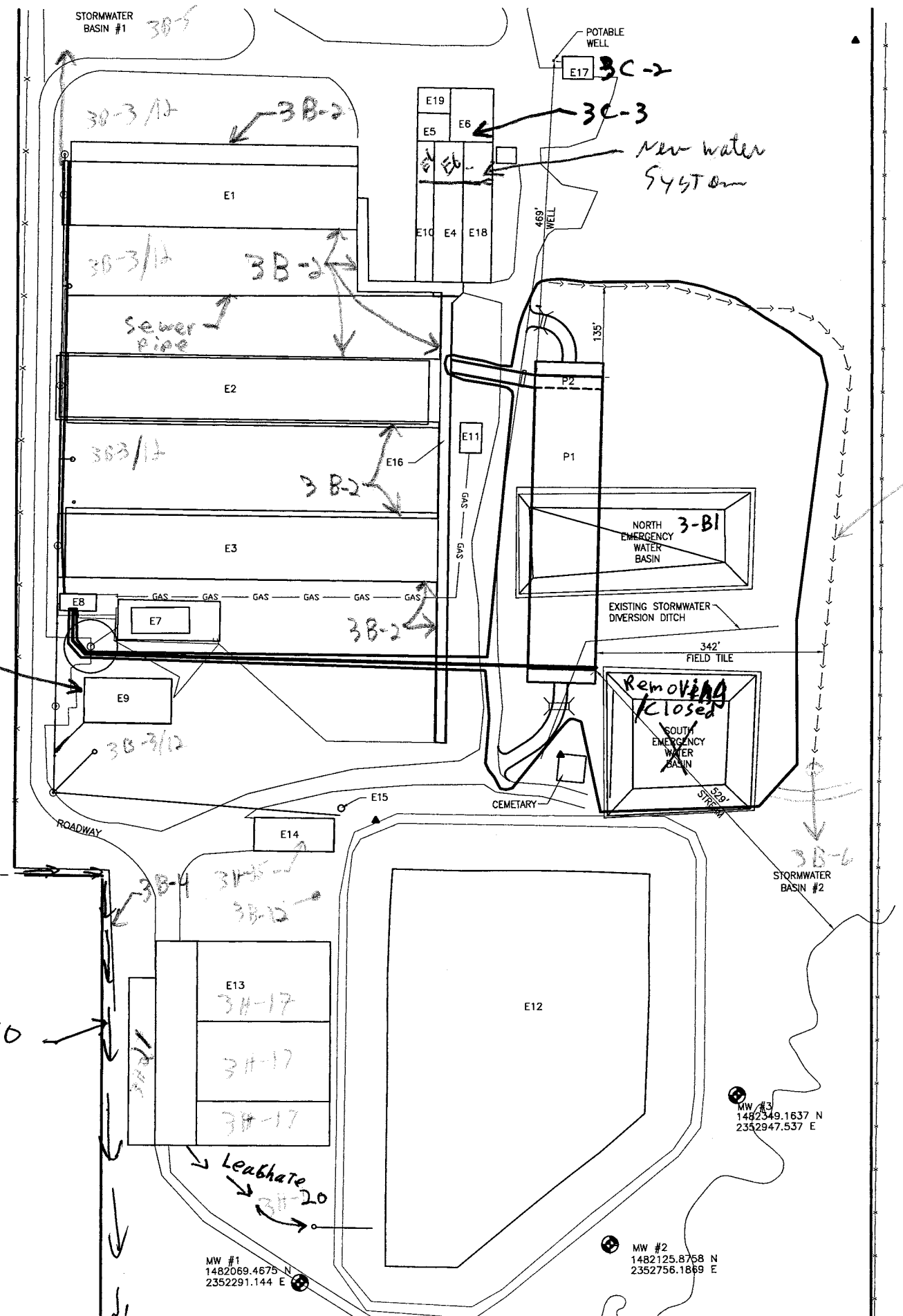


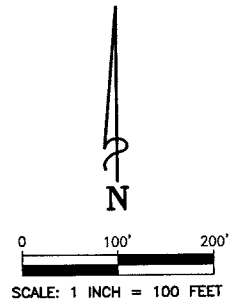
S:\218\2008\project\numbers\33840068 (Hill Crest Dairy)\Drawings\Civil\Eng\Plan\Hill Crest Dairy\DWG 7/20/2010 3:58 PM



Mortality Collection Area

EXISTING FACILITY DETAILS	
ITEM	DESCRIPTION
E1	FREESTALL BARN
E2	FREESTALL BARN
E3	FREESTALL BARN
E4	HOLDING PEN
E5	HOSPITAL PARLOR
E6	PARLOR/MILK HOUSE
E7	DIGESTER
E8	RECEPTION TANK
E9	SOLIDS STACKING AREA
E10	HOSPITAL FREESTALL
E11	COGEN ROOM
E12	LAGOON CELL 1
E13	FEED CENTER
E14	WASHBAY
E15	LIFT STATION
E16	TRANSFER HALLWAY
E17	WELL HOUSE
E18	HAY STORAGE AREA
E19	OFFICE

PROPOSED FACILITY DETAILS - Future	
ITEM	DESCRIPTION
P1	FREESTALL BARN
P2	TRANSFER HALLWAY



- LEGEND
- ~ FLOW ARROW
 - △ TEMPORARY CONTROL POINTS
 - - - - - INTERMITTENT STREAM
 - - - - - EXISTING FIELD TILE
 - - - - - EXISTING FENCE
 - - - - - CROP LINE
 - SOIL BORING
 - - - - - GAS LINE

SCALE VALID ONLY ON 22"x34" SIZE PLANS

THE IDEAS, DESIGNS, AND DRAWINGS REPRESENTED HERE ARE THE SOLE PROPERTY OF MAURER STUTZ, INC. REPRODUCTION OR USE, IN WHOLE OR PART, FOR ANY OTHER PROJECT WITHOUT AUTHORIZATION FROM MAURER STUTZ, INC. IS PROHIBITED. COPYRIGHT 2008 MAURER STUTZ, INC.

THE CONTRACTOR/BUILDER SHALL VERIFY ALL DIMENSIONS AND REPORT ANY DISCREPANCIES TO THE DESIGNER IMMEDIATELY.

PROFESSIONAL DESIGN FIRM LICENSE #184-000177
PROFESSIONAL ENGINEER LICENSE #055-052159 RENEWAL 11-30-09

REVITATIONS

7615 NORTH HANOVER DRIVE
PEORIA, ILLINOIS 61615
TEL: (309) 693-7819
FAX: (309) 693-7818

MAURER STUTZ, INC.
ENGINEERS SURVEYORS
"WORKING WITH YOU BY DESIGN"

1870 EAST ASH STREET
PEORIA, ILLINOIS 61611
TEL: (309) 647-7831
FAX: (309) 647-8155

Sheet Title: **FARMSTEAD PLAN**

Project: **PROPOSED NEW FREESTALL BARN**

Client: **HILL CREST DAIRY**

Designed By: JEO/BAB

Drawn By: NDP/JEA

Reviewed By: TLF

Date: 21 NOVEMBER, 08

Project No.: 238-040068

Sheet No.: **C1**