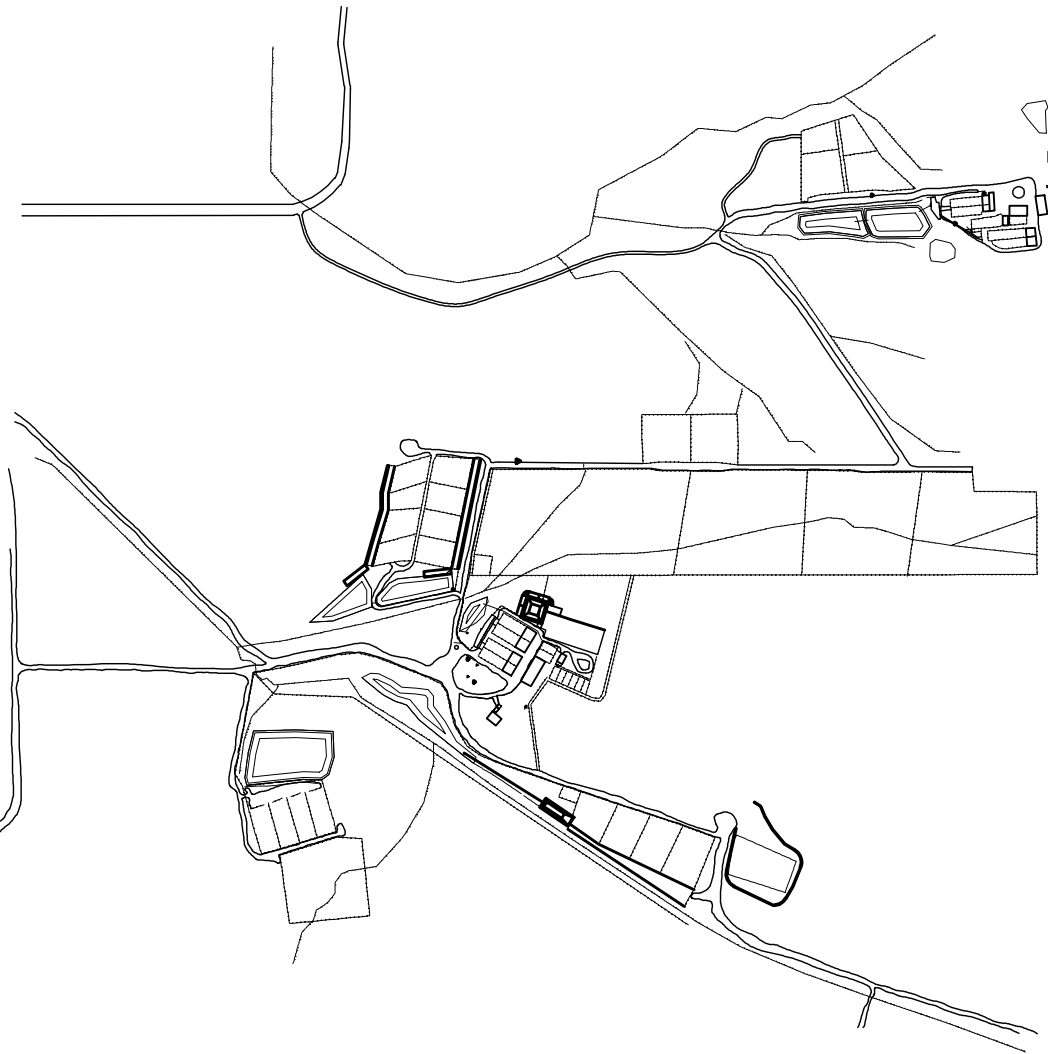
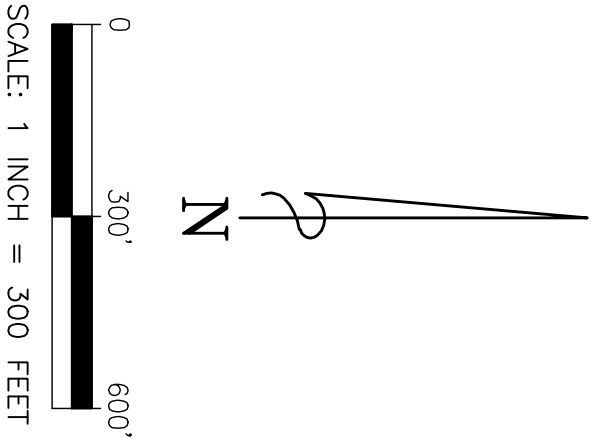


PROPOSED FACILITY DETAILS	
ITEM	DESCRIPTION
P1	EARTHEN HOLDING POND
P2	EARTHEN HOLDING POND
P3	EARTHEN HOLDING POND
P4	CONCRETE SETTLING BASIN
P5	CONCRETE SETTLING BASIN
P6	CONCRETE SETTLING BASIN
P7	CONCRETE SETTLING BASIN
P8	CONCRETE SETTLING BASIN
P9	CONCRETE RECEPTION BOX

EXISTING FACILITY DETAILS	
ITEM	DESCRIPTION
E1A-H	EARTHEN LOTS 100'S
E2A-D	PASTURE PADDocks 200'S
E3A-B	EARTHEN LOTS 300'S
E4A-B	EARTHEN LOTS 400'S
E5A-E	EARTHEN LOTS 50'S
E6A-D	EARTHEN LOTS 60'S
E7A-D	CONCRETE LOTS 1-4
E8A-C	TEMPORARY PENS
E9A-H	CONCRETE LOTS
E10	HOLDING POND
E11	HOLDING POND
E12	HOLDING POND
E13	HOLDING POND
E14	HOLDING POND
E15	HOLDING POND
E16	HOLDING POND
E17	HOLDING POND
E18	CONCRETE SETTLING BASIN
E19	CONCRETE SETTLING BASIN
E20	MANURE TRANSFER ALLEY
E21	MANURE TRANSFER ALLEY
E22	CONCRETE SETTLING BASIN
E23	CONCRETE SETTLING BASIN
E24	COMPOSTING AREA
E25	COMMODITY STORAGE
E26	FEED STORAGE AREA
E27	FUEL STORAGE AREA



REVISIONS

Date	Description

7615 NORTH HARKER DRIVE
PEORIA, ILLINOIS 61615
PH. (309) 693-7615
FAX (309) 693-7616

1670 EAST ASH STREET
CANTON, ILLINOIS 61520
PH. (309) 647-7631
FAX (309) 647-6155



GRADING PLAN

CATTLE FEEDING AND BACKGROUNDING FACILITY

COLD SPRINGS FARMS

Client:	
Designed By:	JEO
Drawn By:	NDP/JEA
Reviewed By:	TJF
Date:	15 MAY, 08
Project No.:	238-08012A
Sheet No.:	

THE IDEAS, DESIGNS, AND DRAWINGS REPRESENTED HERE ARE THE
SOLE PROPERTY OF MAURER & STUTZ, INC. NO REPRODUCTION OR
ADAPTATION OF ANY PART OF THIS DOCUMENT IS PERMITTED
WITHOUT THE WRITTEN PERMISSION OF MAURER & STUTZ, INC.
PROFESSIONAL DESIGN FIRM LICENSE #194-000177, ILLINOIS
THE DESIGNER, INDEPENDENTLY.

C3