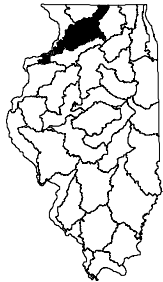
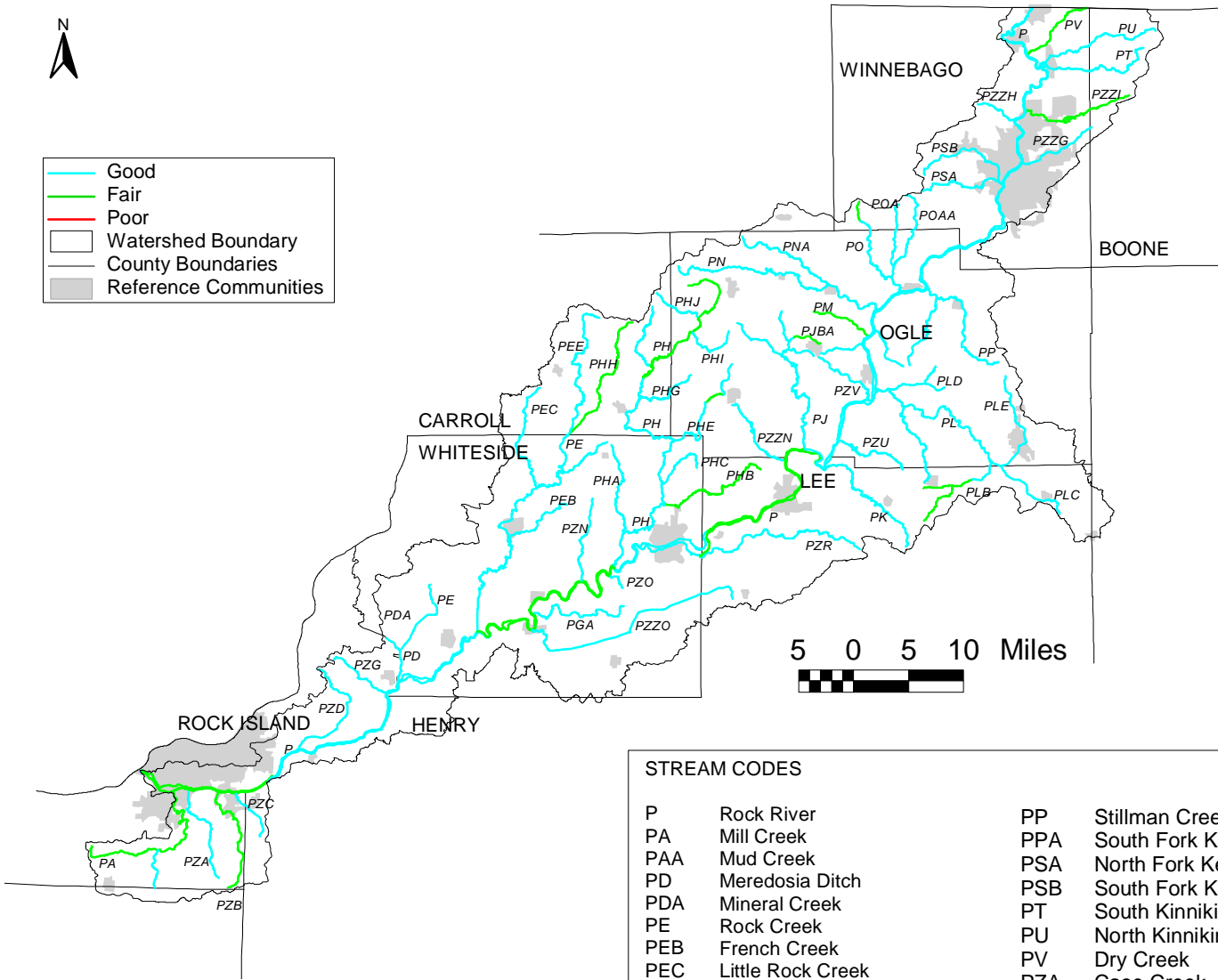
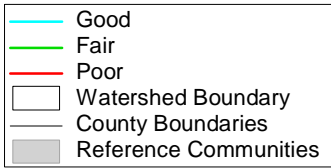
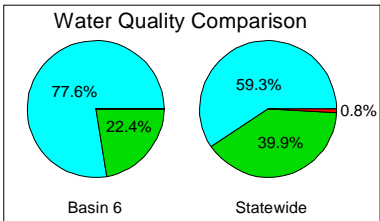


6. Rock River Watershed



STREAM CODES

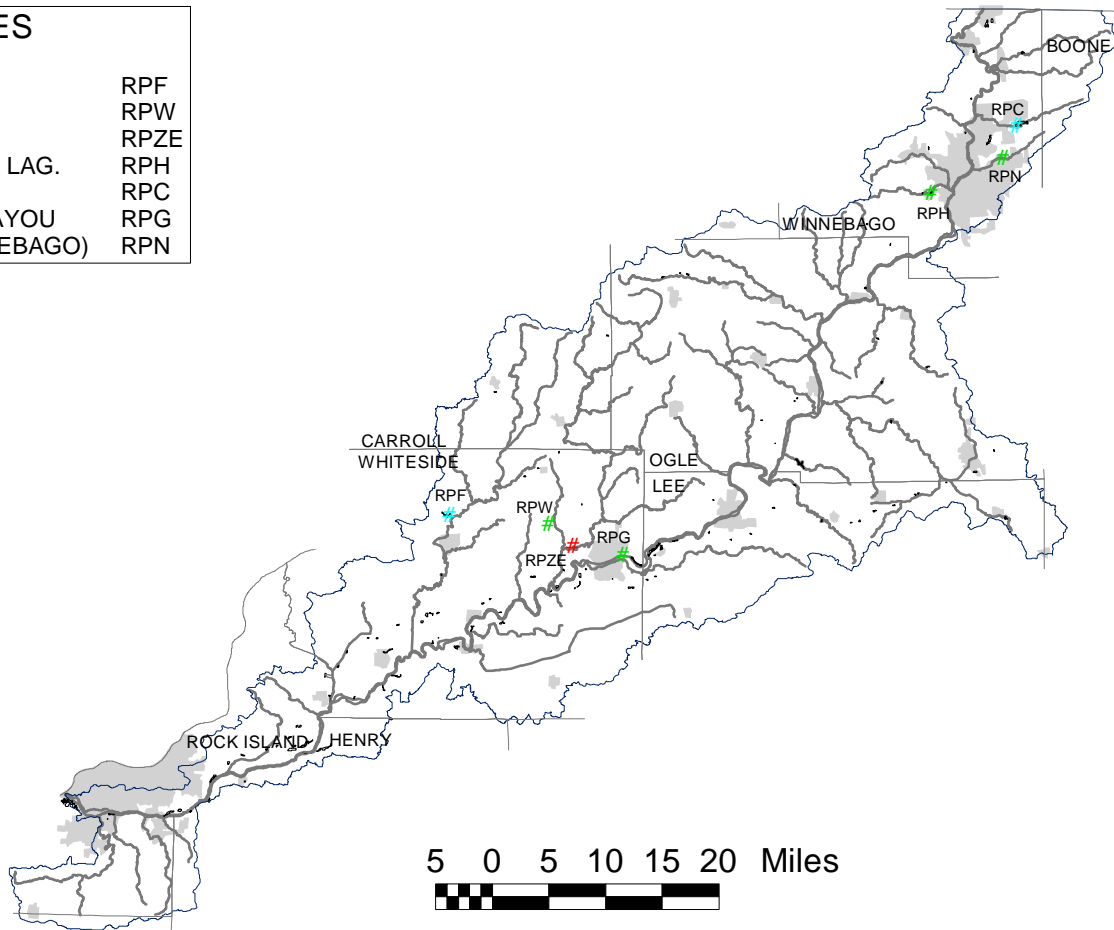
P	Rock River	PP	Stillman Creek
PA	Mill Creek	PPA	South Fork Kent Creek
PAA	Mud Creek	PSA	North Fork Kent Creek
PD	Meredosia Ditch	PSB	South Fork Kent Creek
PDA	Mineral Creek	PT	South Kinnikinnick Creek
PE	Rock Creek	PU	North Kinnikinnick Creek
PEB	French Creek	PV	Dry Creek
PEC	Little Rock Creek	PZA	Case Creek
PED	Little Spring Creek	PZB	Coal Creek
PEE	Otter Creek	PZC	Shaffer Creek
PGA	Ellsworth Creek	PZD	Zuma Creek
PH	Elkhorn Creek	PZG	Canoe Creek
PHA	Spring Creek	PZN	Deer Creek
PHB	Sugar Creek	PZO	Ramsey Slough
PHC	Jordan Creek	PZR	Three Mile Branch
PHE	Buffalo Creek	PZU	Clear Creek
PHG	Eagle Creek	PZV	Gale Creek
PHH	Middle Creek	PZW	Mud Creek South
PHI	Fivemile Creek	PZZA	Spring Creek
PHJ	West Fork Elkhorn Creek	PZZG	Spring Creek North
PJ	Pine Creek	PZZH	Mud Creek South
PJB	Coon Creek	PZZI	Willow Creek
PJBA	Mt. Morris Creek North	PZZN	Sevenmile Branch
PJBB	Mt. Morris Creek South	PZZO	Coon Creek
PK	Franklin Creek		
PL	Kyte River		
PLB	Beach Creek		
PLBA	South Beach Creek		
PLC	Steward Creek		
PLD	Honey Creek		
PLE	Prairie Creek		
PM	Silver Creek		
PN	Leaf River		
PNA	Mud Creek		
PO	Mill Creek		
POA	Middle Creek		
POAA	East Fork Mill Creek		



6. Rock River Watershed

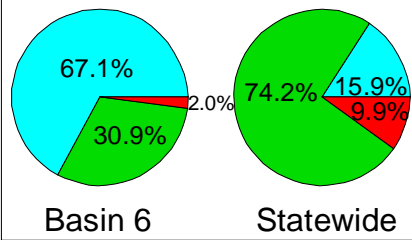
LAKE CODES

CARLTON	RPF
JUDE	RPW
LAKEVIEW	RPZE
LEVINGS PARK LAG.	RPH
PIERCE	RPC
SINNISSIPPI BAYOU	RPG
SPRING (WINNEBAGO)	RPN



5 0 5 10 15 20 Miles

Water Quality Comparison



- # Good
- # Fair
- # Poor
- Watershed Boundary
- County Boundaries
- Rivers and Streams
- Reference Communities



Illinois Environmental Protection Agency
Bureau of Water
Surface Water Section

