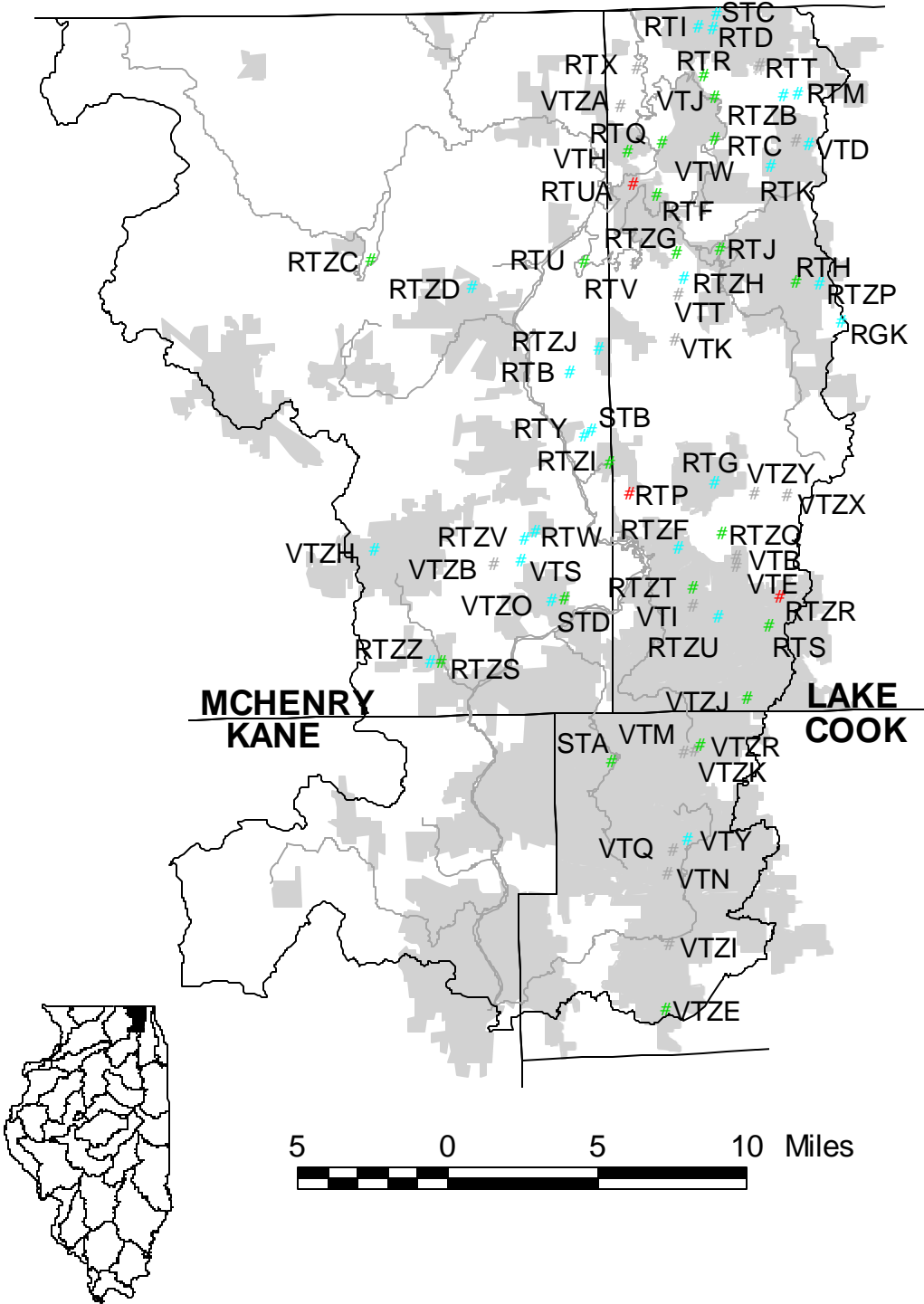
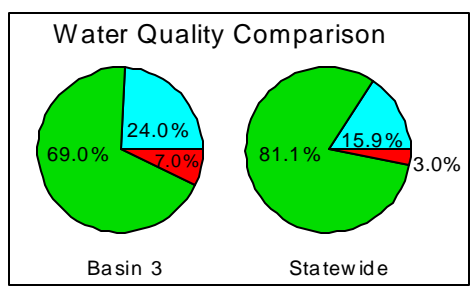
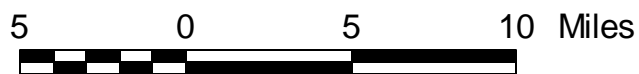
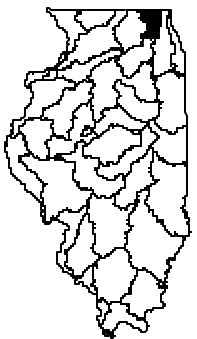


### 3. Upper Fox River Watershed



LAKE CODES	
ADALYN	VTN
ANTIOCH	RTT
ATWOOD (HOLLOWS CONS)	VTS
BANGS	RTG
BARRINGTON	RTZT
BLUFF	VTJ
BODE SOUTH	VTZI
CARY VETERANS	STD
CATHERINE	RTD
CEDAR (LAKE)	RTK
CHANNEL	RTI
CRYSTAL (McHENRY)	VTZH
DEEP (LAKE)	VTD
DEFIANCE	RTB
DOGBONE	VTB
DUCK	RTZG
DUNNS	VTH
EAST LOON	RTM
ECHO	RTZR
FISCHER'S	VTT
FISH-DUNCAN	VTK
FOX	RTF
GRASS	RTQ
GRASSY (LAKE)	VTI
GRAYS	RGK
GRISWOLD	RTY
HARROW GATE	STA
HAWLEY	VTM
HIGHLAND	RTZP
HIGHWOOD	STB
HONEY	RTZU
INDIAN KNOLL	VTE
ISLAND	RTZI
JAYCEE PARK	VTZO
KEENE	VTZK
KILLARNEY	RTZV
KOLLAR	VTZE
LAKE-IN-THE-HILLS#1W	RTZZ
LAKE-IN-THE-HILLS#2E	RTZS
LEFT FOOT	VTY
LILY	RTZJ
LITTLE SILVER	STC
LONG (LAKE)	RTJ
LOUISE	VTZJ
MARIE (LAKE)	RTR
MCCULLOM	RTZD
NIPPERSINK	RTUA
OWENS	VTZX
PETITE	VTW
PISTAKEE	RTU
REDHEAD	RTV
ROSE	VTQ
ROUND	RTH
SILVER (McHENRY)	RTW
SLOCUM	RTP
STEPHANIE	VTZR
SUN	RTC
TAYLOR	VTZY
TIMBERLAKE	RTZQ
TOWER (LAKE)	RTZF
TURNER	VTZA
WEST	VTZB
WEST LOON	RTZB
WONDER	RTZC
WOOSTER	RTZH
ZIEGLER (LAKE)	RTX
ZURICH	RTS



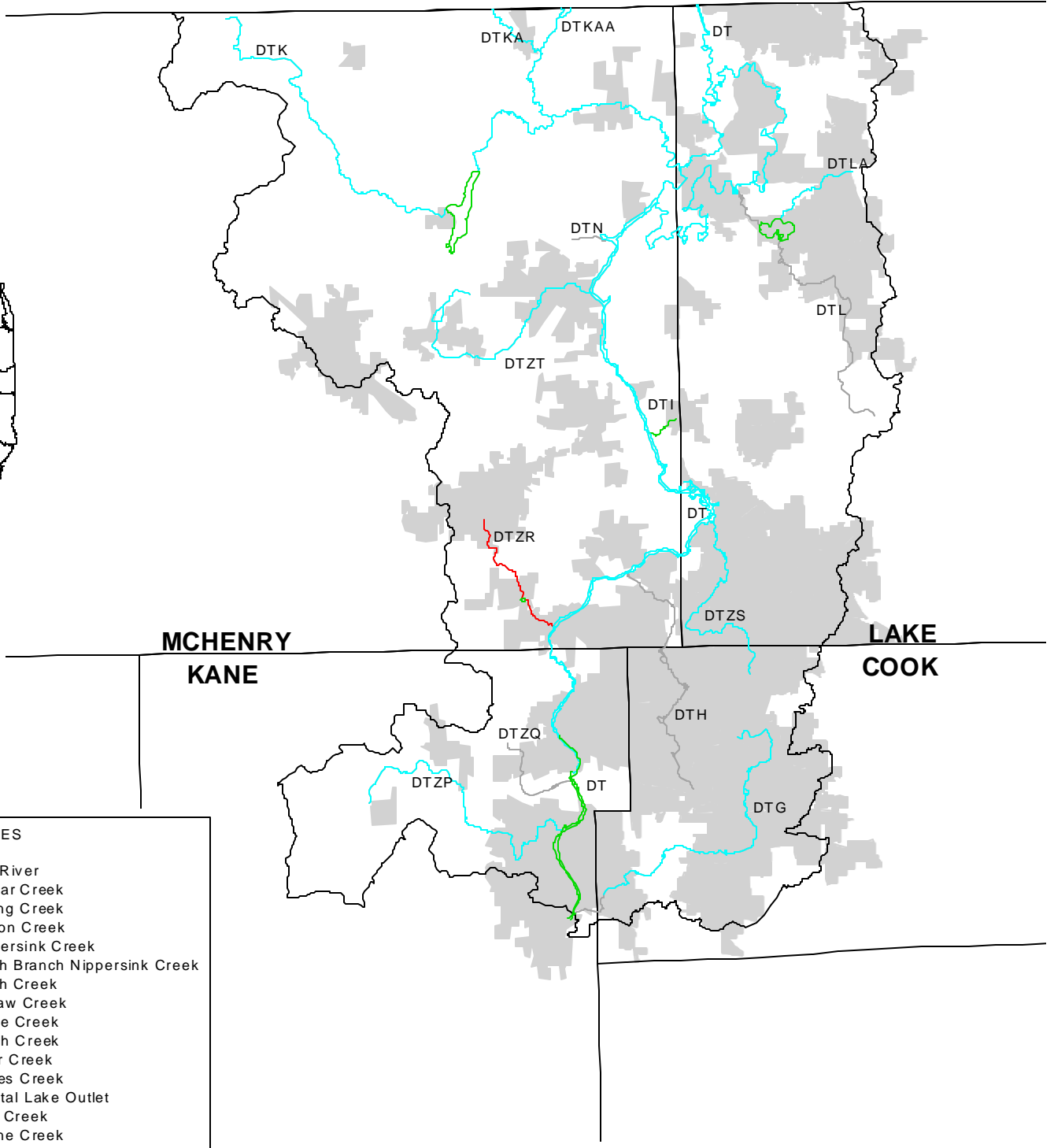
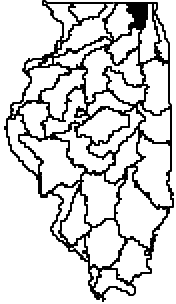
- # Good
- # Fair
- # Poor
- # Not Assessed

- Watershed Boundary
- County Boundaries
- Rivers and Streams
- Reference Communities



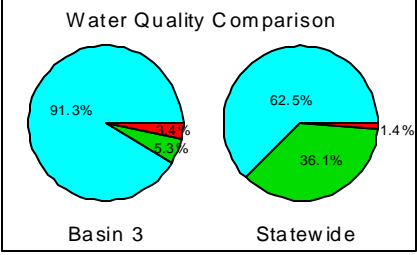
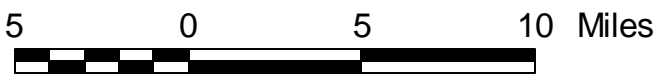
Illinois Environmental Protection Agency  
Bureau of Water  
Surface Water Section


### 3. Upper Fox River Watershed



**STREAM CODES**

DT	Fox River
DTG	Poplar Creek
DTH	Spring Creek
DTI	Cotton Creek
DTK	Nippersink Creek
DTKA	North Branch Nippersink Creek
DTKAA	North Creek
DTL	Squaw Creek
DTLA	Eagle Creek
DTN	Dutch Creek
DTZP	Tyler Creek
DTZQ	Jelkes Creek
DTZR	Crystal Lake Outlet
DTZS	Flint Creek
DTZT	Boone Creek




 Illinois Environmental Protection Agency  
 Bureau of Water  
 Surface Water Section

	Good
	Fair
	Poor
	Not Assessed
	Watershed Boundary
	County Boundaries
	Reference Communities